

ARDEN BLOCK

602 SE Salmon St | Portland OR 97214

FOR LEASE

DOWNTOWN BUSINESS INCENTIVE!

Get your share of \$25,000,000!

Temporary nonrefundable tax credit designed to incentivize commercial lease signings and lease renewals.

*See below for details



COMMERCIAL SPACE FOR LEASE

DETAILS

- Space size: ± 8,700 SF – Shell
± 3,840 SF – Office/Showroom
- Lease rate: Call for rate

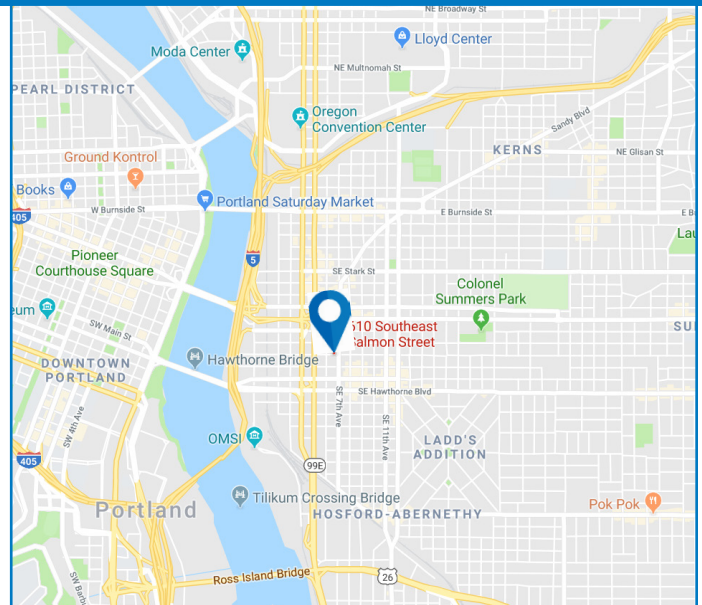
FEATURES

- Great location
- Easily access to downtown and I-5
- Dock & grade (19' wide x 14' high) loading
- Drive-in door

*Credit Requirements

Any business that meets the following criteria may participate in the DBI credit program:

1. Be registered with the City of Portland's Revenue Division and be in compliance for the prior periods.
2. Either:
 - Enter into a new lease, or extend a current lease, during the 2023 or 2024 calendar year for building space within the eligible sub-district boundaries for a period of four years or more; or
 - Own and occupy that building space within the eligible sub-district boundaries.
3. Maintain 15 employees or more working at least half their time in the leased or owned building space within the eligible sub-district boundaries over the four-year period.



07.25.2024

For more information or a property tour, please contact:

GREG NESTING
503.225.8440
GregN@norris-stevens.com

GABE SCHNITZER
503.225.8443
GabeS@norris-stevens.com

Norris & Stevens

INVESTMENT REAL ESTATE SERVICES



Information contained herein has been obtained from others and considered to be reliable; however, a prospective purchaser or lessee is expected to verify all information to his/her own satisfaction.

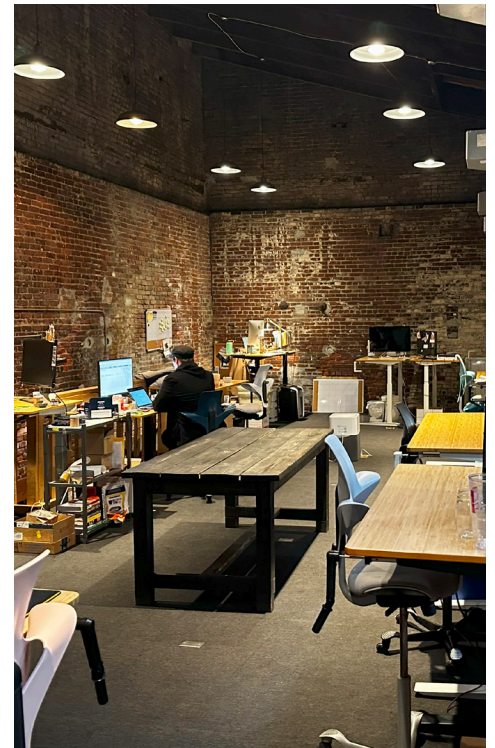
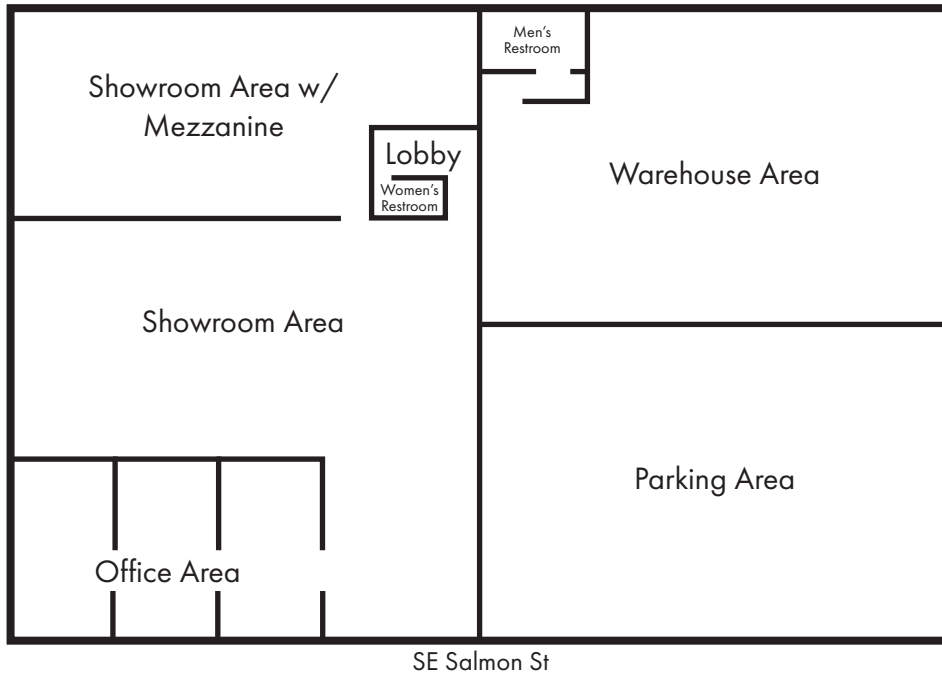
900 SW 5th Avenue • 17th Floor • Portland, OR 97204
503.223.3171 • norris-stevens.com

ARDEN BLOCK

602 SE Salmon St | Portland OR 97214

FOR LEASE

PHOTOS & FLOORPLAN



For more information or a property tour, please contact:

GREG NESTING
503.225.8440
GregN@norris-stevens.com

GABE SCHNITZER
503.225.8443
GabeS@norris-stevens.com



Information contained herein has been obtained from others and considered to be reliable; however, a prospective purchaser or lessee is expected to verify all information to his/her own satisfaction.

Norris & Stevens

INVESTMENT REAL ESTATE SERVICES

900 SW 5th Avenue • 17th Floor • Portland, OR 97204
503.223.3171 • norris-stevens.com