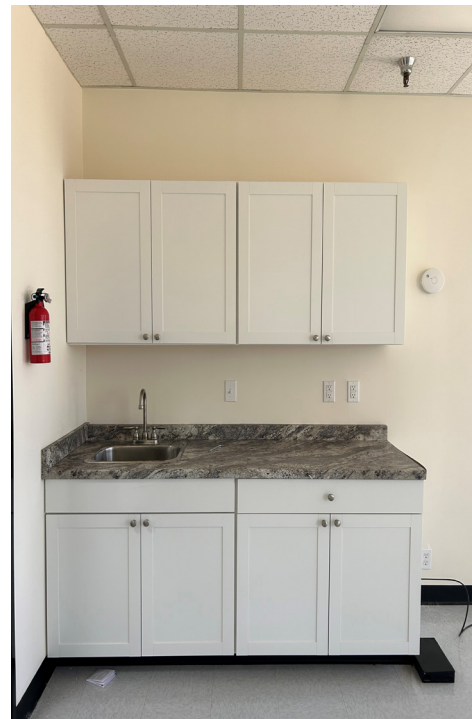


385 Van Ness Ave

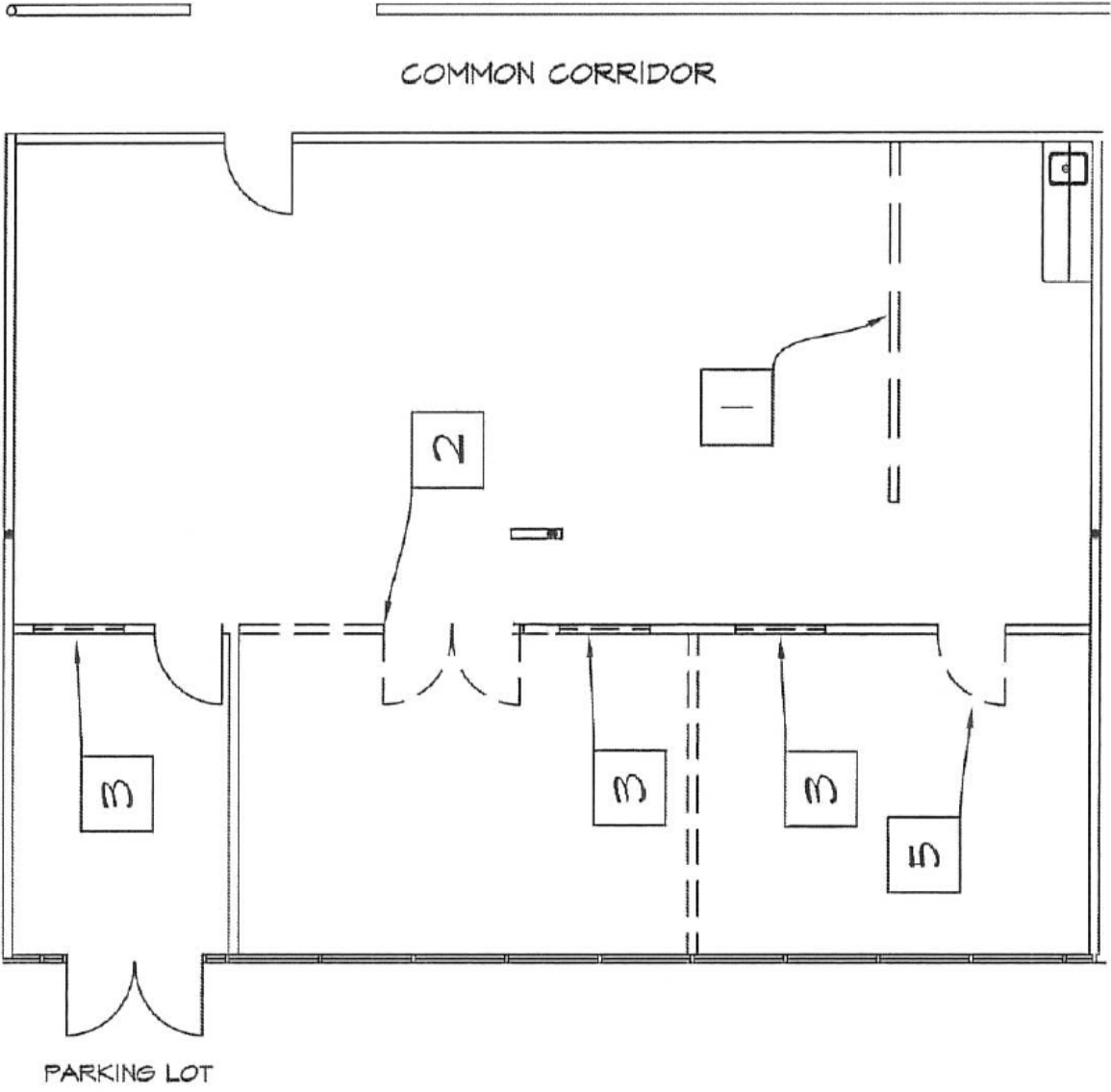
Torrance, California 90501



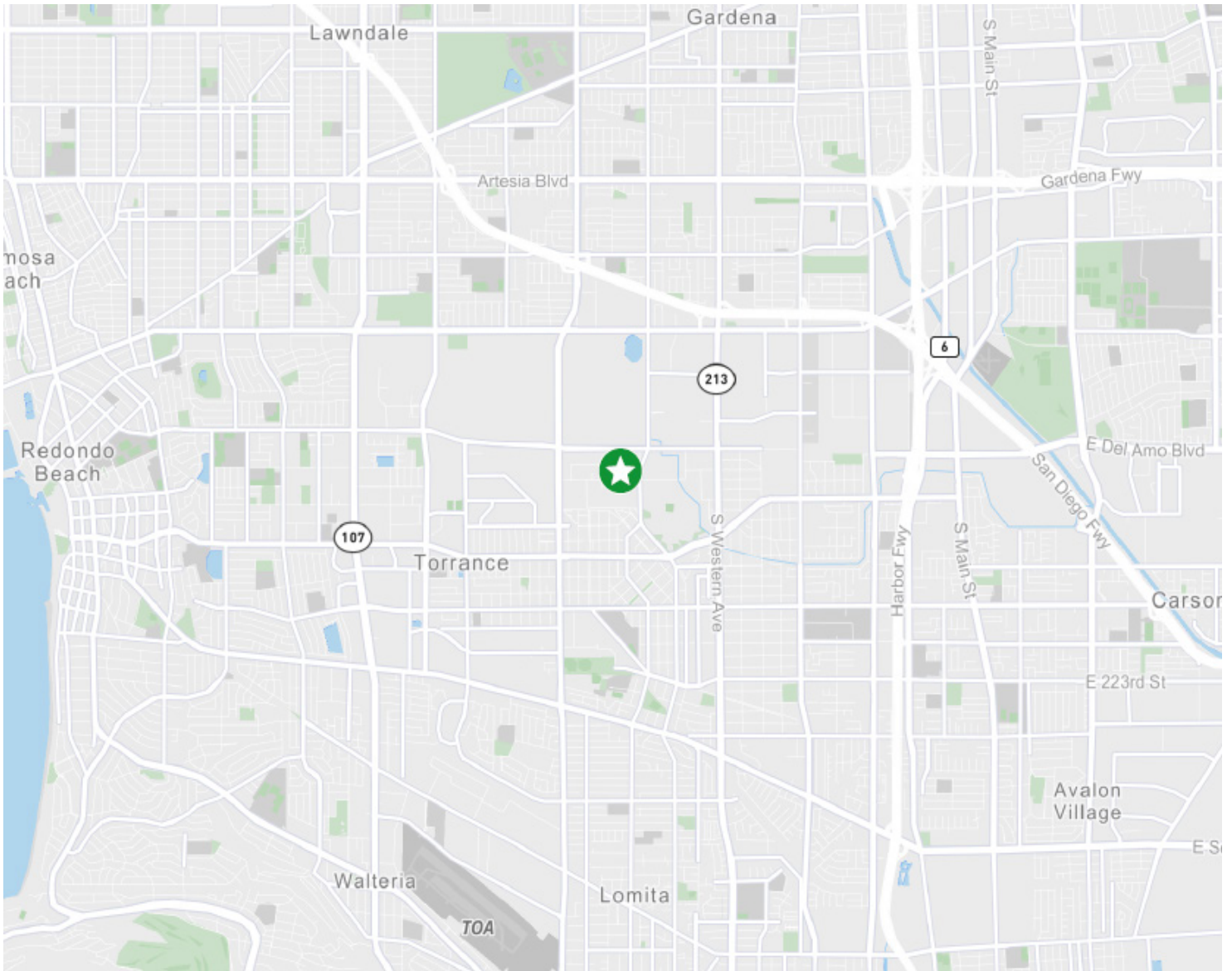


Property Highlights

- + Part of Van Ness Business Center
- + Abundant surface parking
- + Open floor plan
- + One medical office
- + Separate seating / reception



Suite	SF	Pricing
Suite 120	2,004	Undisclosed



Contact Us

Quint Carroll

First Vice President
+1 310 363 4973
quint.carroll@cbre.com
Lic. 01914692

Tom Sheets

Executive Vice President
+1 310 363 4943
tom.sheets@cbre.com
Lic. 01252183

Aubrey Larkin

Client Services Coordinator
+1 310 363 4900
aubrey.larkin@cbre.com
Lic. 02194232

© 2023 CBRE, Inc. All rights reserved. This information has been obtained from sources believed reliable, but has not been verified for accuracy or completeness. You should conduct a careful, independent investigation of the property and verify all information. Any reliance on this information is solely at your own risk. CBRE and the CBRE logo are service marks of CBRE, Inc. All other marks displayed on this document are the property of their respective owners, and the use of such logos does not imply any affiliation with or endorsement of CBRE. Photos herein are the property of their respective owners. Use of these images without the express written consent of the owner is prohibited.