

# Retail or Office Spaces For Lease

10190 & 10192 Warwick Boulevard, Newport News, VA 23601



**Great location at the southern end  
of historic Hilton Village!**

- On bus line
- Pylon signage on Warwick Boulevard (24,000 VPD)
- Offstreet parking
- 37 parking spaces

## PROPERTY DETAILS

10190-A Warwick Boulevard:	1,000 SF	\$ 800/ mo
10190-B Warwick Boulevard:	600 SF	\$ 800/ mo
10190-C Warwick Boulevard:	400 SF	\$ 700/ mo
10192 Warwick Boulevard:	1,200 SF	\$1,200/ mo

## DEMOGRAPHICS

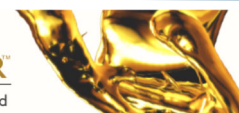
	1 mile	3 miles	5 miles
Total Households:	4,173	31,410	70,531
Total Population:	9,881	77,950	182,901
Average Income:	\$54,659	\$53,608	\$56,528

The information contained herein has been obtained from sources that are deemed to be reliable. However, Mid-Atlantic Commercial and its Agent(s) make no representation and assumes no liability as to the accuracy and validity of the information herein. Purchasers are advised to perform their own research and verification in order to determine the suitability of the Property for their purchase. Jonathan Guion is Managing Broker for Mid-Atlantic Commercial and can be reached at 757-867-8777 or at [jguion@midatlanticcommercial.com](mailto:jguion@midatlanticcommercial.com).

**Terry Allan Johnson**

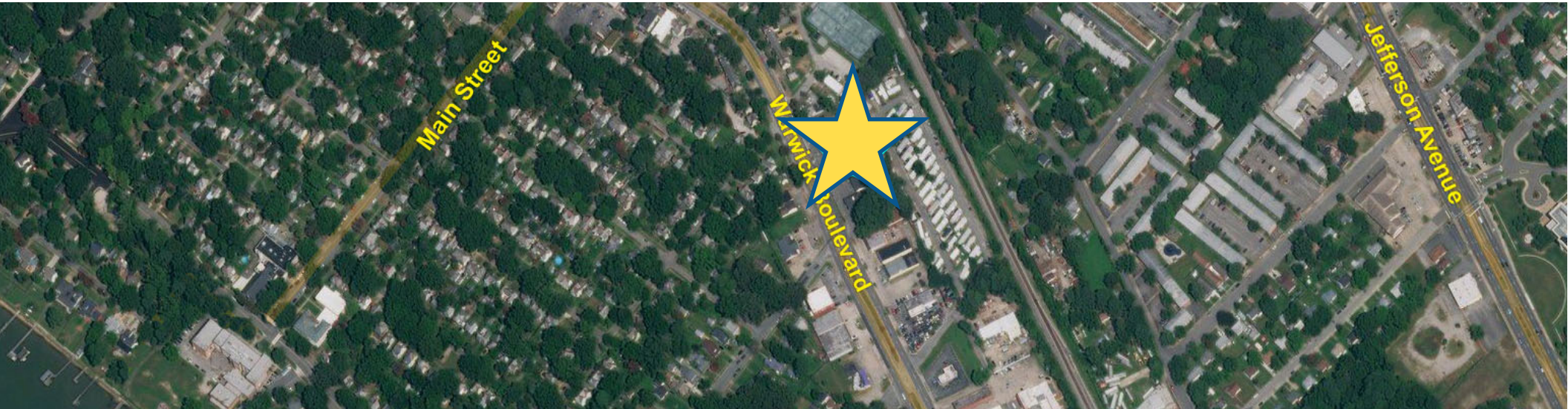
757.593.3335 or 757.867.8777

[tjohnson@midatlanticcommercial.com](mailto:tjohnson@midatlanticcommercial.com)





# 10190 & 10192 Warwick Boulevard, Newport News, VA 23601



The information contained herein has been obtained from sources that are deemed to be reliable. However, Mid-Atlantic Commercial and its Agent(s) make no representation and assumes no liability as to the accuracy and validity of the information herein. Purchasers are advised to perform their own research and verification in order to determine the suitability of the Property for their purchase. Jonathan Guion is Managing Broker for Mid-Atlantic Commercial and can be reached at 757-867-8777 or at [jguion@midatlanticcommercial.com](mailto:jguion@midatlanticcommercial.com).

**Terry Allan Johnson**

757.593.3335 or 757.867.8777

[tjohnson@midatlanticcommercial.com](mailto:tjohnson@midatlanticcommercial.com)

