

6930, 6940, 6950 INDIANA AVENUE
RIVERSIDE, CA 92506

FOR LEASE
± 847 SF & 868 SF
RETAIL CENTER



JACKIE BEAUCHAMP

(951) 684-1251 | jbeauchamp@mcgre.com

DRE License # #01461175 | #01899258



**MARTIN
COMMERCIAL
GROUP**

Commercial Real Estate Services

WWW.MCGRE.COM



JACKIE BEAUCHAMP

(951) 684-1251 | jbeauchamp@mcgre.com

DRE License # #01461175 | #01899258



**MARTIN
COMMERCIAL
GROUP**

Commercial Real Estate Services

WWW.MCGRE.COM

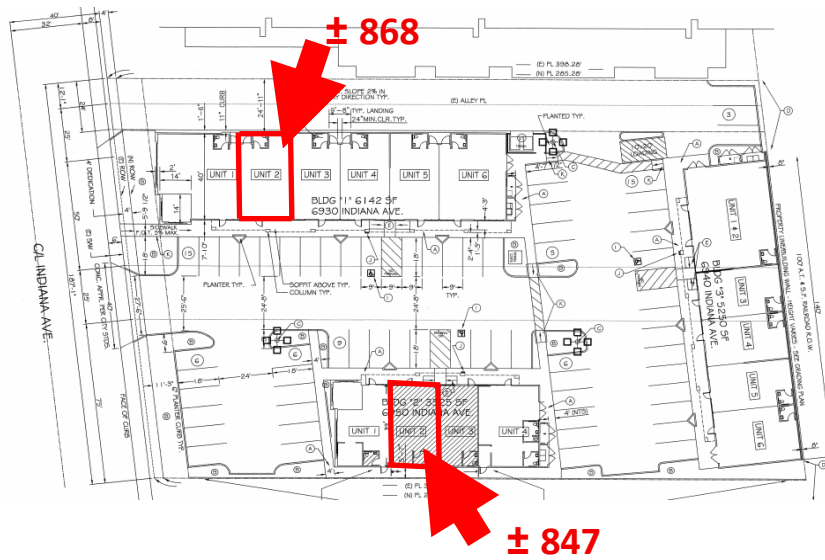
**6930, 6940, 6950 INDIANA AVENUE
RIVERSIDE, CA 92506**

**FOR LEASE
± 847 SF & 868 SF
RETAIL CENTER**



PROPERTY HIGHLIGHTS

- Neighborhood Retail Center
- Suites range from ±650 - ±1,478 SF
- Showroom/Private Office Floorplans
- Interior Private Restroom(s)
- CR Zone (Verify)
- Near the Riverside Auto Center, a Major University and Chain Retail suppliers as Home Depot
- 4:1 Parking Ratio
- Easy Access to 91 Freeway



CALL AGENT TO SHOW!



**MARTIN
COMMERCIAL
GROUP**
Commercial Real Estate Services

The information contained herein has been obtained from sources we deem reliable. While we have no reason to doubt its accuracy, we do not guarantee it.

**CORPORATE OFFICE: 1495 E. WARNER AVENUE ~ SANTA ANA, CA 92705
Orange County 714-241-1141
Inland Empire: 951-684-1251**

**6930, 6940, 6950 INDIANA AVENUE
RIVERSIDE, CA 92506**

**FOR LEASE
± 847 SF & 868 SF
RETAIL CENTER**

AVAILABLE SUITES

SUITE	SQ. FT.	BASE RENT	CAM / NNN	DESCRIPTION	AVAIL. DATE
6950 Suite 2	847 +/-	\$1,780.00 (2.10MG)	(Water/Trash Included) No additional CAM or NNN fees	Reception, 1 Private Office, Conference Room, Open Work Space, Storage Room and Restroom	12/1/2024
6930 Suite 2	868 +/-	\$1,820.00 (2.10MG)	(Water/Trash Included) No additional CAM or NNN fees	1 Open Space with Restroom	Upon 15 days notice

The information contained herein has been obtained from sources we deem reliable. While we have no reason to doubt its accuracy, we do not guarantee it.

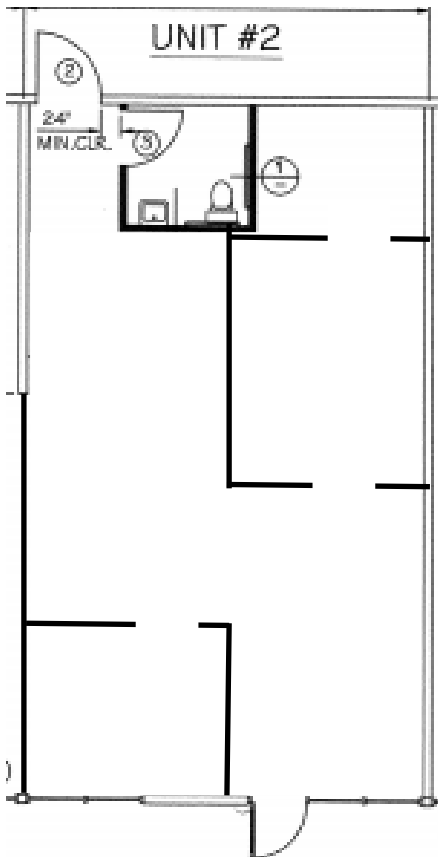
**CORPORATE OFFICE: 1495 E. WARNER AVENUE ~ SANTA ANA, CA 92705
Orange County 714-241-1141
Inland Empire: 951-684-1251**

6930, 6940, 6950 INDIANA AVENUE
RIVERSIDE, CA 92506

FOR LEASE
± 847 SF & 868 SF
RETAIL CENTER

FLOORPLANS

6950 Indiana, Suite 2



The information contained herein has been obtained from sources we deem reliable. While we have no reason to doubt its accuracy, we do not guarantee it.

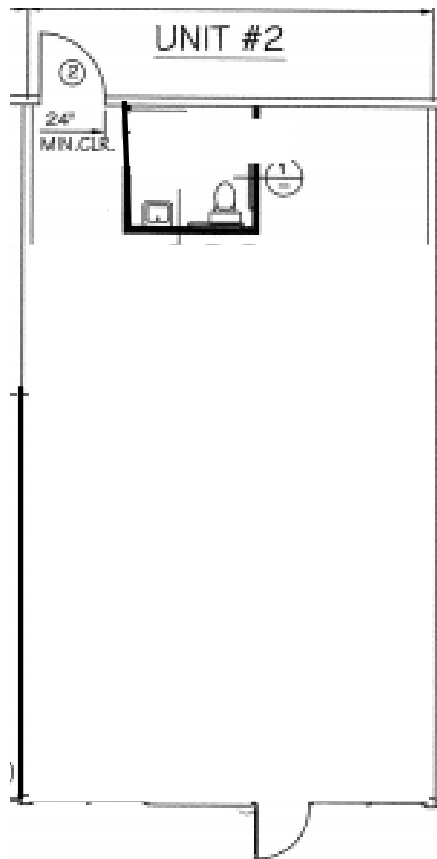
CORPORATE OFFICE: 1495 E. WARNER AVENUE ~ SANTA ANA, CA 92705
Orange County 714-241-1141
Inland Empire: 951-684-1251

**6930, 6940, 6950 INDIANA AVENUE
RIVERSIDE, CA 92506**

**FOR LEASE
± 847 SF & 868 SF
RETAIL CENTER**

FLOORPLANS

6930 Indiana, Suite 2



The information contained herein has been obtained from sources we deem reliable. While we have no reason to doubt its accuracy, we do not guarantee it.

**CORPORATE OFFICE: 1495 E. WARNER AVENUE ~ SANTA ANA, CA 92705
Orange County 714-241-1141
Inland Empire: 951-684-1251**