



Colliers

PRICE REDUCTION!

40

3.05 Acres

6,200 ADT

Airport Rd - 3,600 ADT

Land For Sale

Asking Price:  
\$2.2M

SE Corner Hwy 40 & Airport Rd  
Heber City, Utah

### Property Highlights

- 3.05 Acres
  - Parcel: 00-0015-3069
  - Parcel: 00-0020-2051
- Zoned C2 (Commercial)
- Signalized Intersection
- 2 Shares of Timpanogos Water
- Highway Access
- Excellent Frontage Exposure
  - 300 ft. of Highway 40 Frontage
  - 652 ft. of Airport Road Frontage
- Build up to 4 stories / max 55'

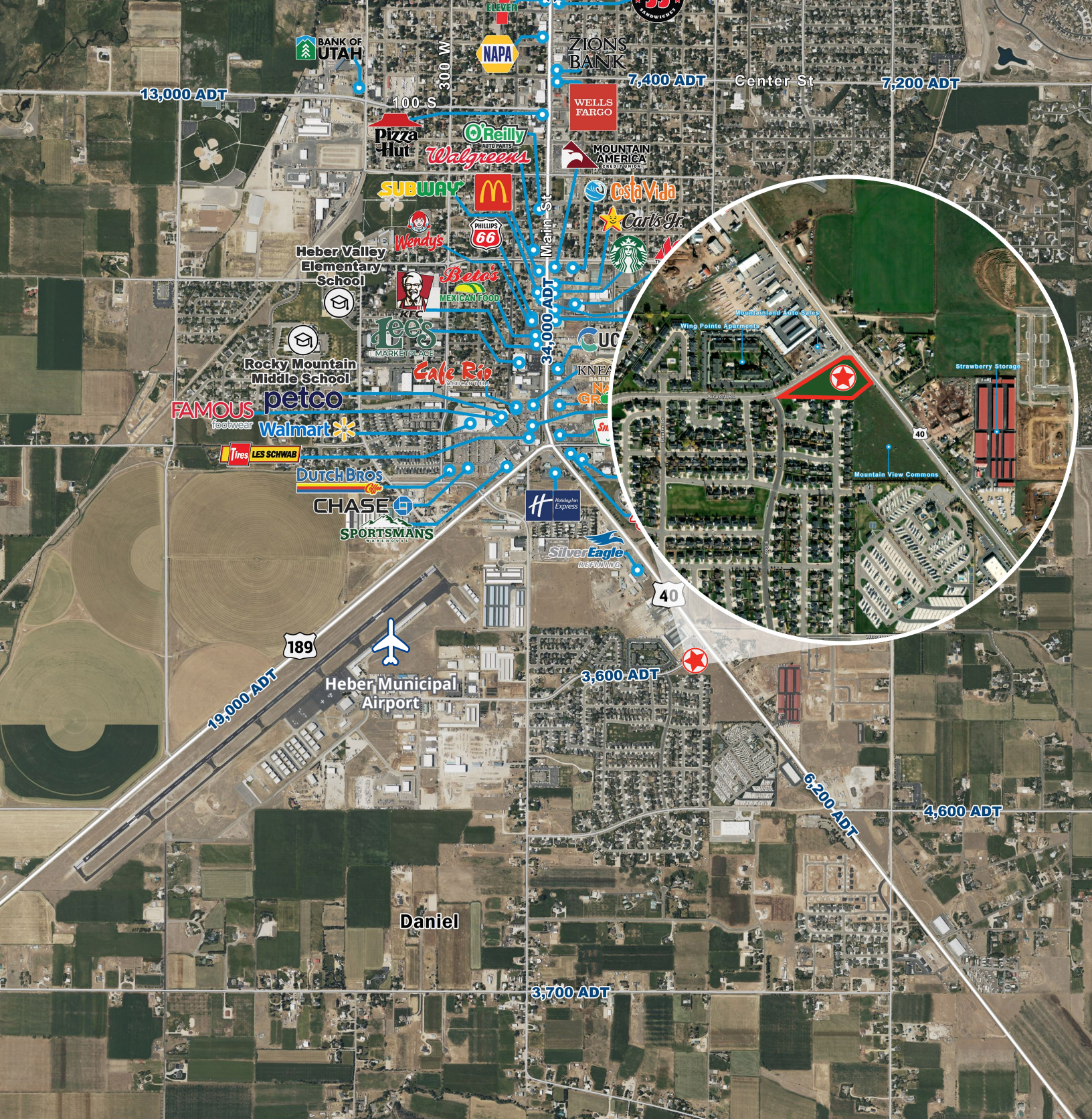
### Contact:

**Mark Haroldsen**  
Associate Vice President  
+1 801 597 7588  
mark.haroldsen@colliers.com

**Colliers**  
2100 Pleasant Grove Blvd., Suite 200  
Pleasant Grove, UT 84062  
Main: +1 801 947 8300  
colliers.com

Accelerating success.





**Colliers**  
 2100 Pleasant Grove Blvd., Suite 200  
 Pleasant Grove, UT 84062  
 Main: +1 801 947 8300  
 colliers.com

**Mark Haroldsen**  
 Associate Vice President  
 +1 801 597 7588  
 mark.haroldsen@colliers.com

This document has been prepared by Colliers International for advertising and general information only. Colliers International makes no guarantees, representations or warranties of any kind, expressed or implied, regarding the information including, but not limited to, warranties of content, accuracy and reliability. Any interested party should undertake their own inquiries as to the accuracy of the information. Colliers International excludes unequivocally all inferred or implied terms, conditions and warranties arising out of this document and excludes all liability for loss and damages arising there from. This publication is the copyrighted property of Colliers International and/or its licensor(s). ©2024. All rights reserved.