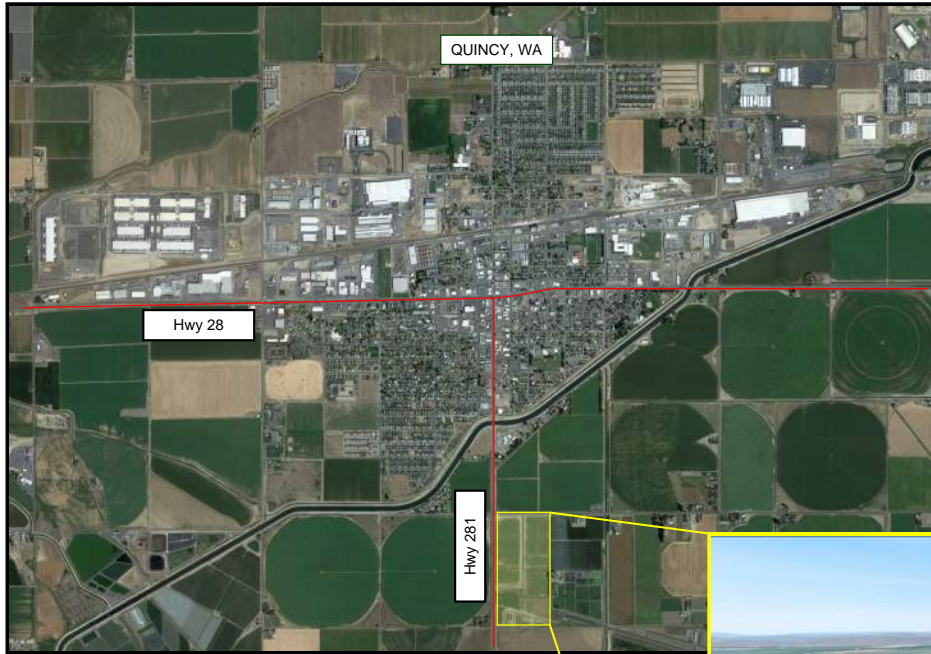


Quincy, Washington

Highway 281 Commercial Development

Zoning: Business | Light Industrial



Adjacent to Highway 281 | Unobstructed Visibility

Hwy 281: T1 Designated Freight Corridor > 2,000 trucks/day

City Water, Sewer, and Power stubbed at Lot | Build-Ready Sites

509-289-0376
jcedergreen@redderecapital.com

Available Lots Pricing & Zoning



Available Lots - Pricing | Size | Zoning

Lot 1 - FOR SALE: **\$470,000** | Size: 1.090 acres | Zoning: Business

Lot 2 - FOR SALE: **\$450,000** | Size: 1.086 acres | Zoning: Business

Lot 4 - FOR SALE: **\$1,000,000** | Size: 2.669 acres | Zoning: Business

Lot 5 - FOR SALE: **\$1,190,000** | Size: 4.999 acres | Zoning: Business

Lot 6 - FOR SALE: **\$605,000** | Size: 2.529 acres | Zoning: Business

Lot 7 - FOR SALE: **\$990,000** | Size: 4.259 acres | Zoning: Business

Lot 13 - FOR SALE: **\$1,490,000** | Size: 5.356 acres | Zoning: Light Industrial

Lease and build to suit options available upon request