



**PROPERTY
FOR SALE**

1605 Girouard Street West
Saint-Hyacinthe (Québec)

The Offering

- + The subject property is a two floor commercial building located on the corner of Girouard Street West and Denis Avenue.
- + Positioned on one of the main thoroughfares of Saint-Hyacinthe, just off of routes 116 and 137. Right across from the Public Market of Saint-Hyacinthe, gives the subject property great accessibility and visibility.
- + The property is currently zoned 6024C08, which permits a wide range of uses, including financial institutions, services and housing to name a few.

Property Details

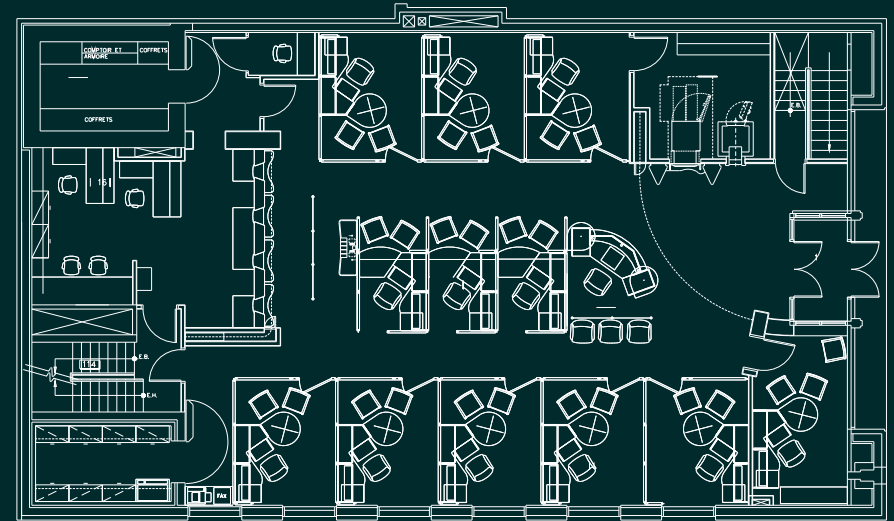
Area:	3,400 sq. ft.
Lot size:	6,080 sq. ft.
Zoning:	6024 C08 / Commercial
Frontage:	52.89'
Asking Price:	\$750,000



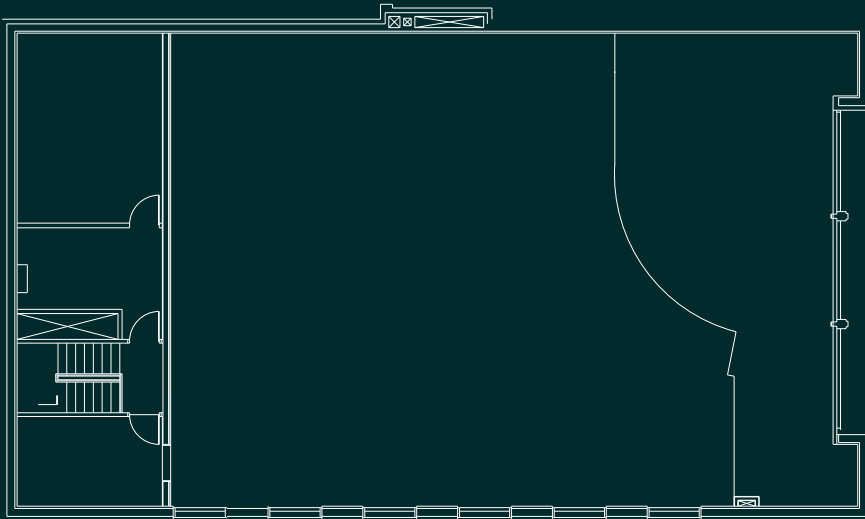
Saint-Hyacinthe, Québec

- + Located on the outskirts of the Greater Montréal Area, the city of Saint-Hyacinthe has over 52 000 inhabitants. Known for its agricultural heritage and thriving economy, the city offers a mix of urban amenities and a rural atmosphere.
- + The city benefits from a well-connected transportation network. Saint-Hyacinthe is conveniently located near major highways, facilitating easy access to Montreal which is approximately an hour away. This has further enhanced its appeal to businesses. Many companies see Saint-Hyacinthe as an ideal location to expand or relocate due to its lower operating costs compared to the metropolitan area.

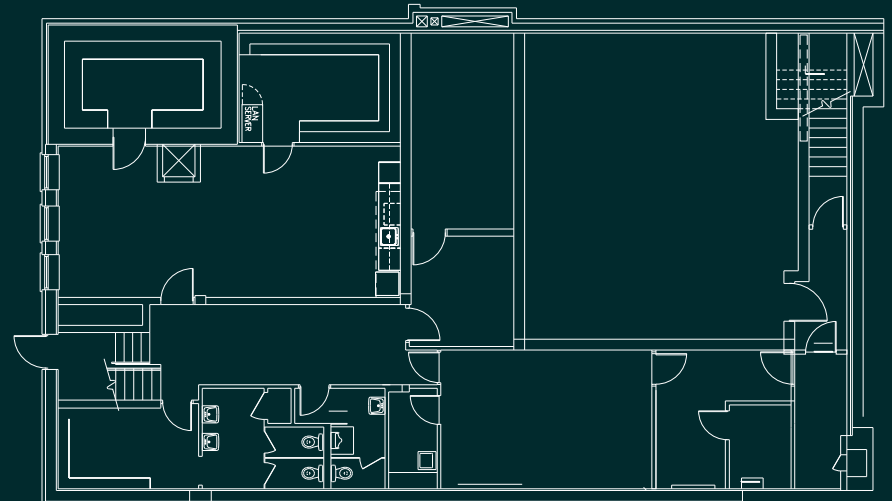
Ground Floor

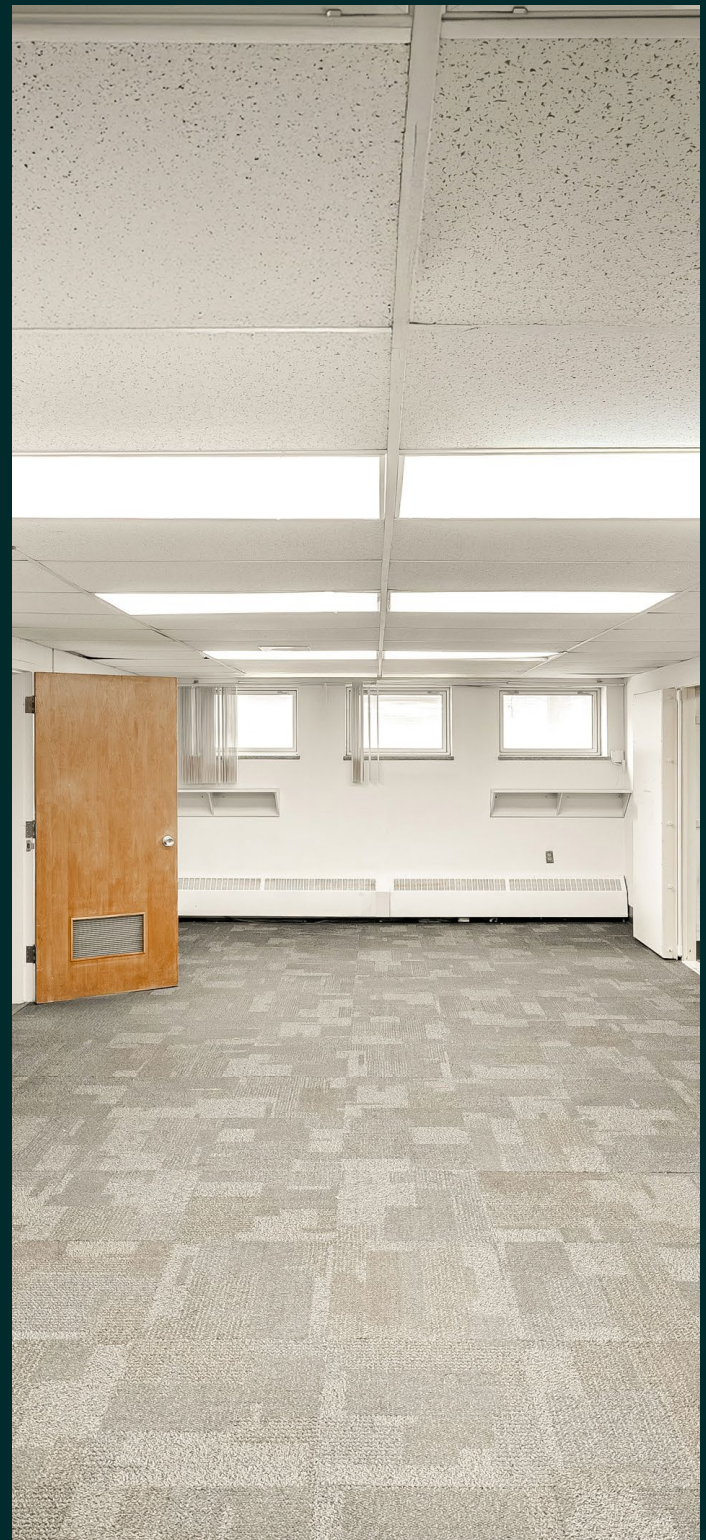


2nd Floor



Basement





Location

Contact Us

Christopher Rundle
Vice President
Real Estate Broker
+1 514 375 0818
christopher.rundle@cbre.com

Bryan Greenberg
Associate Vice President
Real Estate Broker
+1 514 375 2507
bryan.greenberg@cbre.com

Amanda Angela Herbu
Associate
Commercial Real Estate Broker
+1 514 375 0456
amanda.herbu@cbre.com



CBRE Limited, Real Estate Agency | 1250 René-Lévesque Blvd West, Suite 2800 | Montréal, Québec H3B 4W8 | +1 514 849 6000 | www.cbre.ca