



CAPITOL
EQUITIES

FOR LEASE

Providing creative commercial real estate solutions since 1997



CREATIVE OFFICE | 1,680 SF

GAY + HIGH ST

15 EAST GAY STREET, COLUMBUS, OH 43215

ED FELLOWS

VP Brokerage
614.760.5660 x123
efellows@capitolequities.com

J.R. KERN

President
614.760.5660 x124
jrkern@capitolequities.com



CAPITOL
EQUITIES

FOR LEASE | CREATIVE OFFICE DOWNTOWN

15 EAST GAY STREET, COLUMBUS, OH 43215



Property Description

Dynamic, statement making office suite located on the 2nd floor, at the corner of High and Gay Street.

Property Highlights

- Prime location in downtown Columbus at Gay and High Street located on the Capital Line Project (see attached press release)
- Modern and stylish architectural design with a spacious and flexible floor plan including extra high ceilings, natural light, a mostly open office plan and kitchenette
- Easy access to public garage parking, street parking and on primary public transportation routes
- Fantastic proximity to the best downtown Columbus has to offer including dining and entertainment options
- Building is easily accessible with a public elevator for tenants and guests

Location Description

Fantastic downtown Columbus location in the most vibrant and walkable central community. The Gay and High Street neighborhood is experiencing a renaissance including brand-new residential projects, local retailers, art galleries, and restaurant options - from casual to the finest dining in central Ohio.

OFFERING SUMMARY

Available SF:	1,680 SF
Lease Rate:	\$2,900.00 per month
Utilities:	Paid by Tenant

ED FELLOWS

VP Brokerage
614.760.5660 x123
efellows@capitolequities.com

J.R. KERN

President
614.760.5660 x124
jrkern@capitolequities.com

CAPITOLEQUITIES.COM

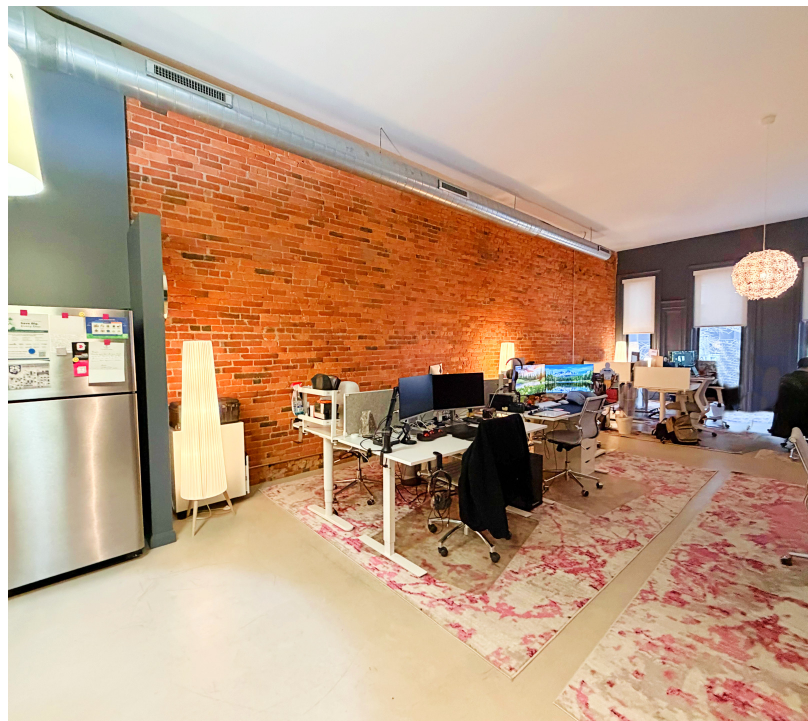
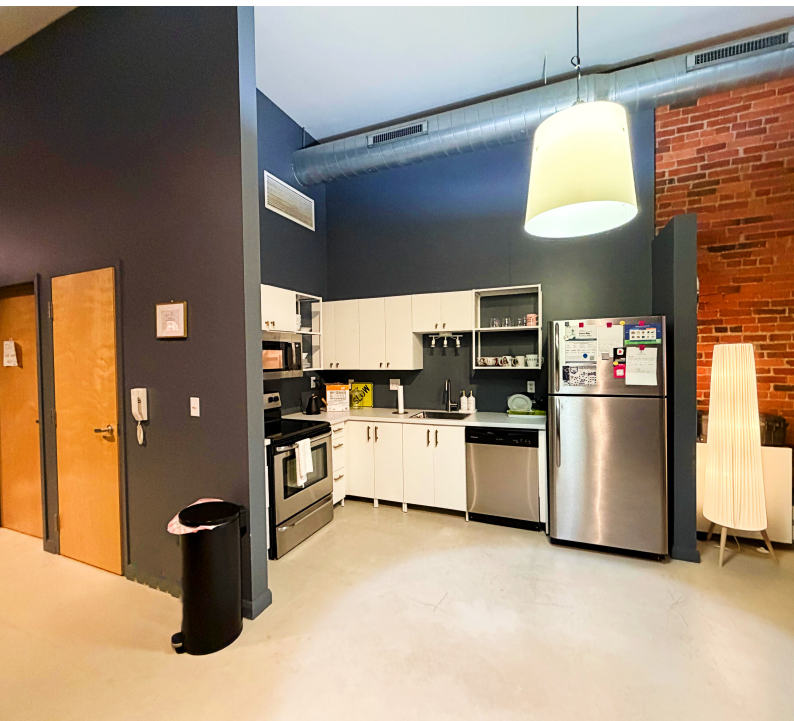
The information contained herein was furnished by sources believed to be reliable, but it is not guaranteed, warranted or represented by Capitol Equities. The presentation of this property is submitted subject to errors, omissions, change of price or condition prior to sale or lease, or withdrawn without notice.



CAPITOL
EQUITIES

FOR LEASE | CREATIVE OFFICE DOWNTOWN

15 EAST GAY STREET, COLUMBUS, OH 43215



ED FELLOWS

VP Brokerage
614.760.5660 x123
efellows@capitolequities.com

J.R. KERN

President
614.760.5660 x124
jrkern@capitolequities.com

CAPITOLEQUITIES.COM



CAPITOL
EQUITIES

FOR LEASE | OFFICE DOWNTOWN

15 EAST GAY STREET, COLUMBUS, OH 43215



ED FELLOWS

VP Brokerage
614.760.5660 x123
efellows@capitolequities.com

J.R. KERN

President
614.760.5660 x124
jrkern@capitolequities.com

CAPITOLEQUITIES.COM



CAPITOL
EQUITIES

FOR LEASE | CREATIVE OFFICE DOWNTOWN

15 EAST GAY STREET, COLUMBUS, OH 43215



LOCATION OVERVIEW

Fantastic downtown Columbus location in the most vibrant and walkable central community. The Gay and High Street neighborhood is experiencing a renaissance including brand-new residential projects, local retailers, art galleries, and restaurant options - from casual to the finest dining in central Ohio.

Located one-block from Capitol Square and the State House. Within walking distance of several hotels, retailers and entertainment options including the Scioto Mile, Columbus Commons and several downtown amenities.

From diverse dining experiences to engaging cultural attractions, the Gay & High community presents an enticing opportunity for office, creative, or loft tenants looking to embrace the pulse of Columbus.

Map data ©2026 Google Imagery ©2026 Airbus, CNES / Airbus, Maxar Technologies, USDA/FPAC/GEO

ED FELLOWS

VP Brokerage
614.760.5660 x123
efellows@capitolequities.com

J.R. KERN

President
614.760.5660 x124
jrkern@capitolequities.com

CAPITOLEQUITIES.COM



CAPITOL
EQUITIES

FOR LEASE | CREATIVE OFFICE DOWNTOWN

15 EAST GAY STREET, COLUMBUS, OH 43215

March 4, 2024

Capital Line to Create Pedestrian and Bike Connectivity Downtown By Downtown Columbus, Inc.

Columbus, Ohio – The City of Columbus, Edwards Companies and Downtown Columbus, Inc. today announced plans for the Capital Line, an urban pathway through the heart of Columbus. The Capital Line will be exclusive to pedestrians and bikes and will link amenities, greenspaces, job centers, and residential neighborhoods within Downtown Columbus.

A community-generated suggestion championed in the Downtown Columbus Strategic Plan, this two-mile journey will offer a direct route to some of the city's most vibrant attractions, extending from the Gay Street District, over the Broad Street Bridge to The Peninsula, to Belle Street, over the Rich Street Bridge, to Rich Street and along Fourth Street, connecting back with Gay Street.

Connection points along the route are iconic Columbus attractions, including the "Current" sculpture suspended above Gay and High Streets, the Scioto Mile riverfront, National Veterans Memorial & Museum, Columbus Commons, Ohio Statehouse, The Peninsula, Dorrian Green and COSI. In-progress and future developments on the Capital Line include Preston Centre, Preston Park, Madison White-Haines Building, 195 E. Broad, The Continental Centre, and The Peninsula.

The Capital Line will also be dotted by public art, street furniture, lighting and landscaping to further create an exceptional pedestrian experience.

"As so many Columbus success stories are, this is a project made possible by public-private partnership," said Columbus Mayor Andrew J. Ginther. "I'm especially proud of how this is being done in direct response to resident feedback. The Capital Line will enhance equity, providing a safe way to walk or bike through our Downtown, and an easily accessible connection to bus transit."

This project, which will take advantage of existing rights-of-way, will be sequenced over the next several years. The initial section will begin on Gay Street, Downtown's densest residential neighborhood, with design to occur over the next year and construction to begin in 2025. Conceptual renderings will serve as inspiration as a design team is selected and community outreach takes place.

"This is an incredible opportunity for our city – I say that not only as a developer, but as a resident," said Jeff Edwards, CEO, Edwards Companies. "Connecting the energy of Gay Street to other Downtown areas will elevate not only Columbus' existing hotspots, but it will spur the development of new ones on the pathway in between. The Capital Line will be a destination in and of itself."

ED FELLOWS

VP Brokerage
614.760.5660 x123
efellows@capitolequities.com

J.R. KERN

President
614.760.5660 x124
jrkern@capitolequities.com

CAPITOLEQUITIES.COM



CAPITOL
EQUITIES

FOR LEASE | CREATIVE OFFICE DOWNTOWN

15 EAST GAY STREET, COLUMBUS, OH 43215

Similar projects in other cities have spurred hundreds of millions in additional development along their pathways. The Indianapolis Cultural Trail, for example, generated an economic impact of \$1 billion.

“The Cap Line is one of the most exciting examples of the Downtown Columbus Strategic Plan in action,” said Amy Taylor, president, Downtown Columbus, Inc. “This is the kind of project that is befitting of a great city in a growing region. It embodies our ambition to ensure Downtown is for all.”

Capital Line Renderings, Updated November 2024



ED FELLOWS

VP Brokerage
614.760.5660 x123
efellows@capitolequities.com

J.R. KERN

President
614.760.5660 x124
jrkern@capitolequities.com

CAPITOLEQUITIES.COM