

# Mercy North Campus

800 E. 1st Street  
Ankeny, Iowa  
[www.cbre.com/desmoines](http://www.cbre.com/desmoines)

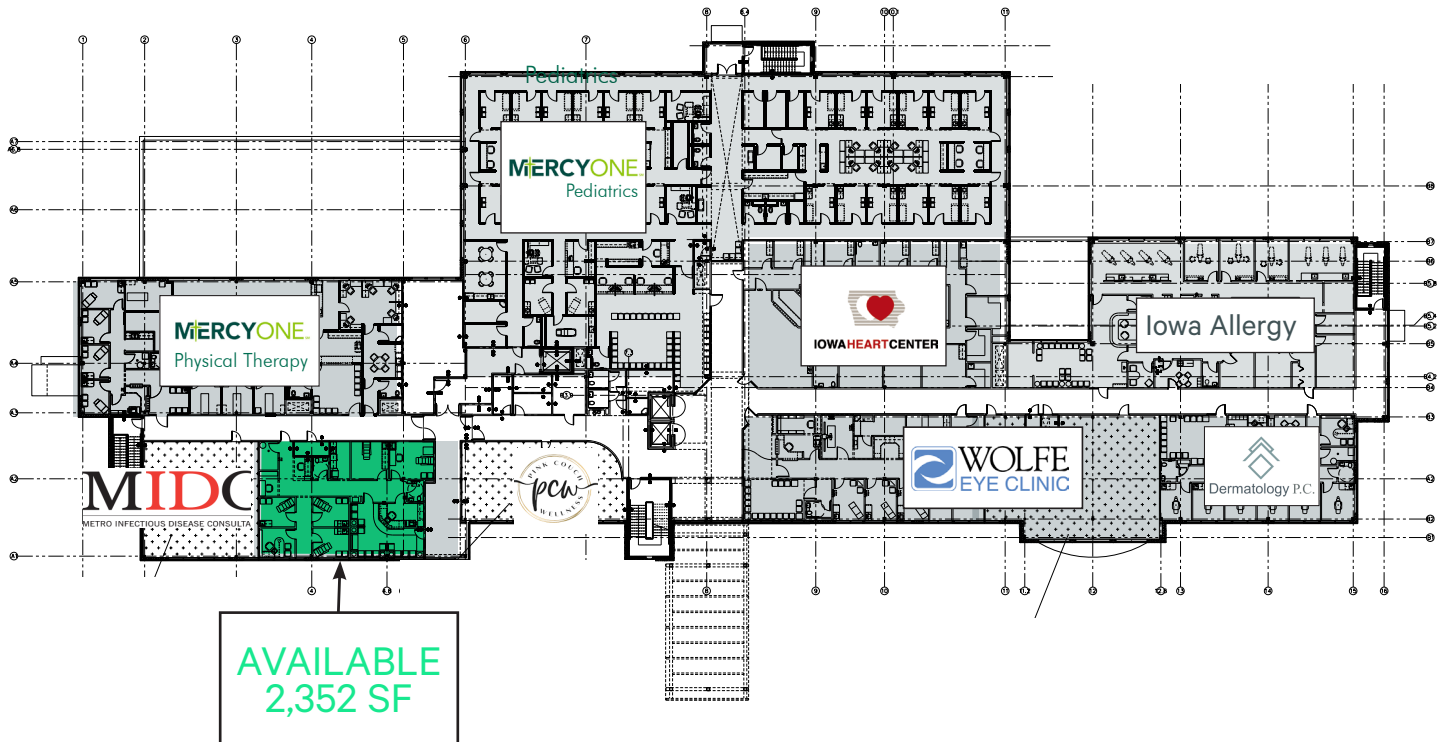
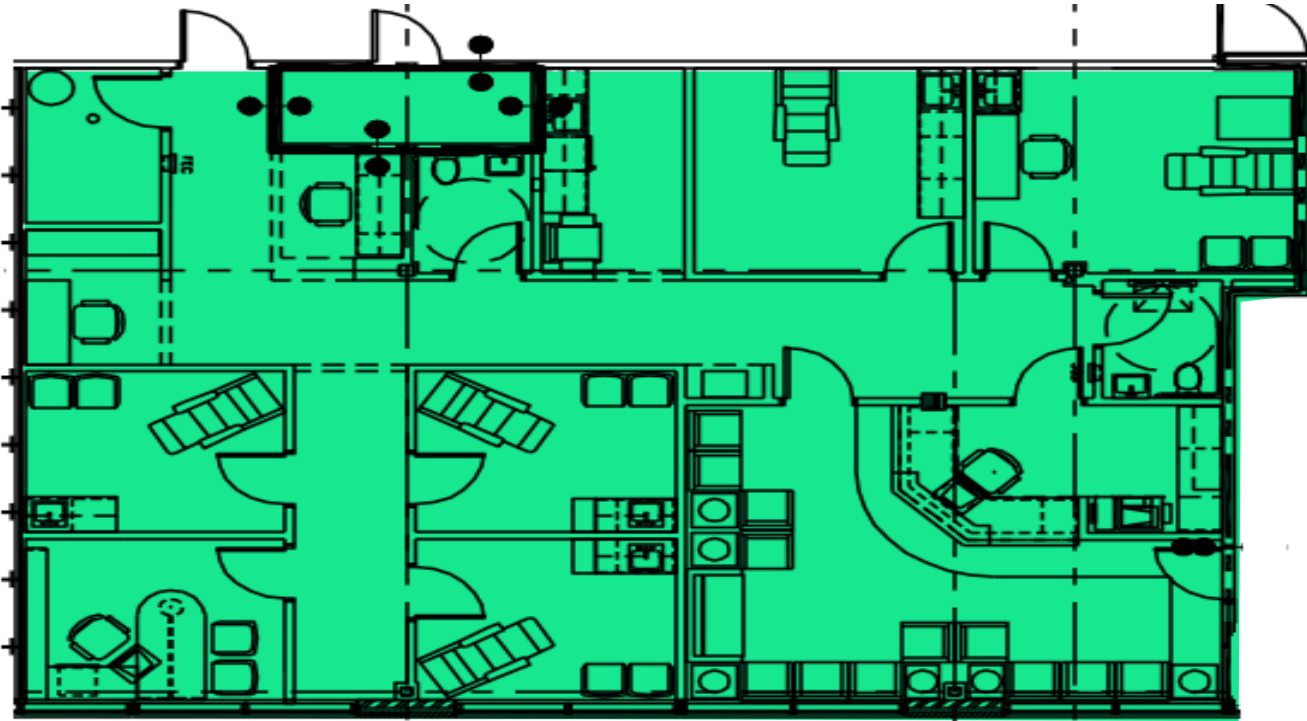
## Medical Office Space Available

- + Available Space
  - Suite 2300 - 2,352 SF
  - Turn-key medical suite recently built out (\$200/SF of improvements)
- + Lease Rate
  - \$23.50/SF As-Is
- + Position your medical business in the heart of the largest free standing medical office building in the Ankeny submarket
- + Major renovation and expansion of existing medical professionals to meet Ankeny's growing medical demands
- + Established medical practices with built-in clientele ready for your medical business

## Turn-Key Medical Space Available



# Suite 2300



# Location



## Contact Us

**Riley Hogan**

Senior Vice President  
+1 515 778 0739  
riley.hogan@cbre.com  
Licensed in the State of Iowa

**Ben Probst**

Senior Associate  
+1 515 326 1985  
ben.probst@cbre.com  
Licensed in the State of Iowa

© 2024 CBRE, Inc. All rights reserved. This information has been obtained from sources believed reliable, but has not been verified for accuracy or completeness. You should conduct a careful, independent investigation of the property and verify all information. Any reliance on this information is solely at your own risk. CBRE and the CBRE logo are service marks of CBRE, Inc. All other marks displayed on this document are the property of their respective owners, and the use of such logos does not imply any affiliation with or endorsement of CBRE. Photos herein are the property of their respective owners. Use of these images without the express written consent of the owner is prohibited.