

Washington Plaza
175 Washington
Avenue
Dumont, New Jersey

**One Unit
Remaining!**



1,040 SF For Lease
MEDICAL OFFICE | OFFICE



- Mixed-use building with office and medical office on ground floor
- Suite 2F: 1,040 SF Available for Lease
- Covered parking
- Access to Routes 4 & 17, US-208, Garden State Parkway, I-80 & US-46
- Close to Bergen Town Center, local shops, food and restaurants
- Surrounding Hospitals: Englewood Hospital, HUMC, Holy Name Medical Center, Pascack Valley Hospital and The Valley Hospital

Darren M. Lizzack, MSRE
Vice President




201 488 5800 x104
dlizzack@naihanson.com



Randy Horning, MSRE
Vice President

201 488 5800 x123
rhorning@naihanson.com

NAI James E. Hanson
COMMERCIAL REAL ESTATE SERVICES, WORLDWIDE

FOLLOW US!      | NJ Offices: Teterboro | Parsippany | naihanson.com | Member of NAI Global with 300+ Offices Worldwide

SERVICES OFFERED

Brokerage • Property Management • Corporate Services • Financing • Logistics • Government Services • Healthcare • Tenant Representation • Cold Storage • Investment Services

The information contained herein has been obtained from sources considered to be reliable, but no guarantee of its accuracy is made by NAI James E. Hanson

Washington Plaza
175 Washington Avenue
Dumont, New Jersey

Property PHOTOS



Washington Plaza
175 Washington
Avenue
Dumont, New Jersey

Property PHOTOS



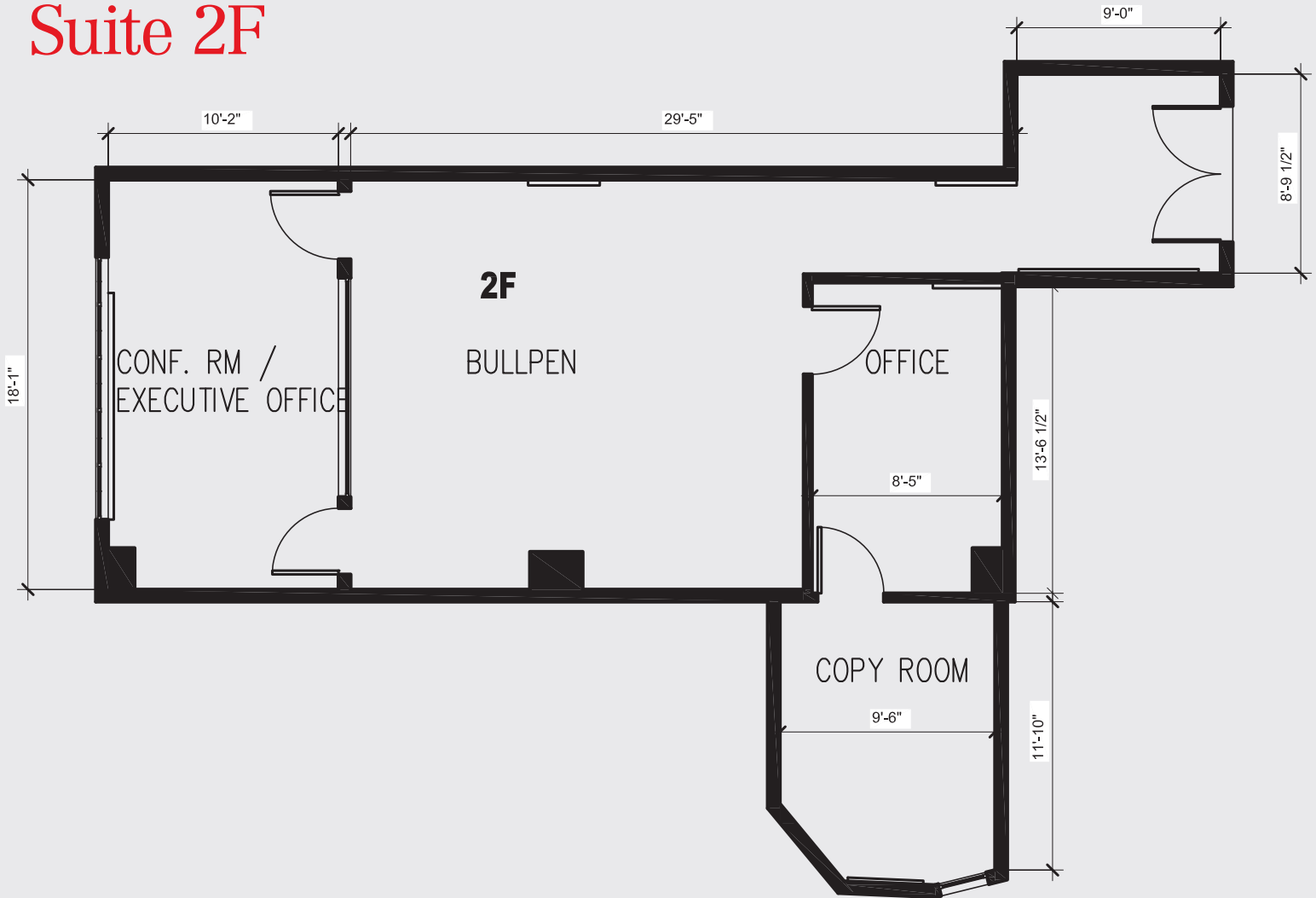
Washington Plaza

175 Washington Avenue

Dumont, New Jersey

1,040 SF FLOOR PLAN

Suite 2F



Washington Plaza
175 Washington Avenue
Dumont, New Jersey

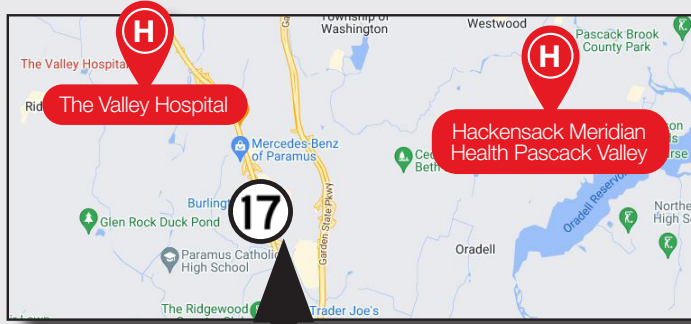
1,540 SF
FLOOR PLAN

Suite 2A

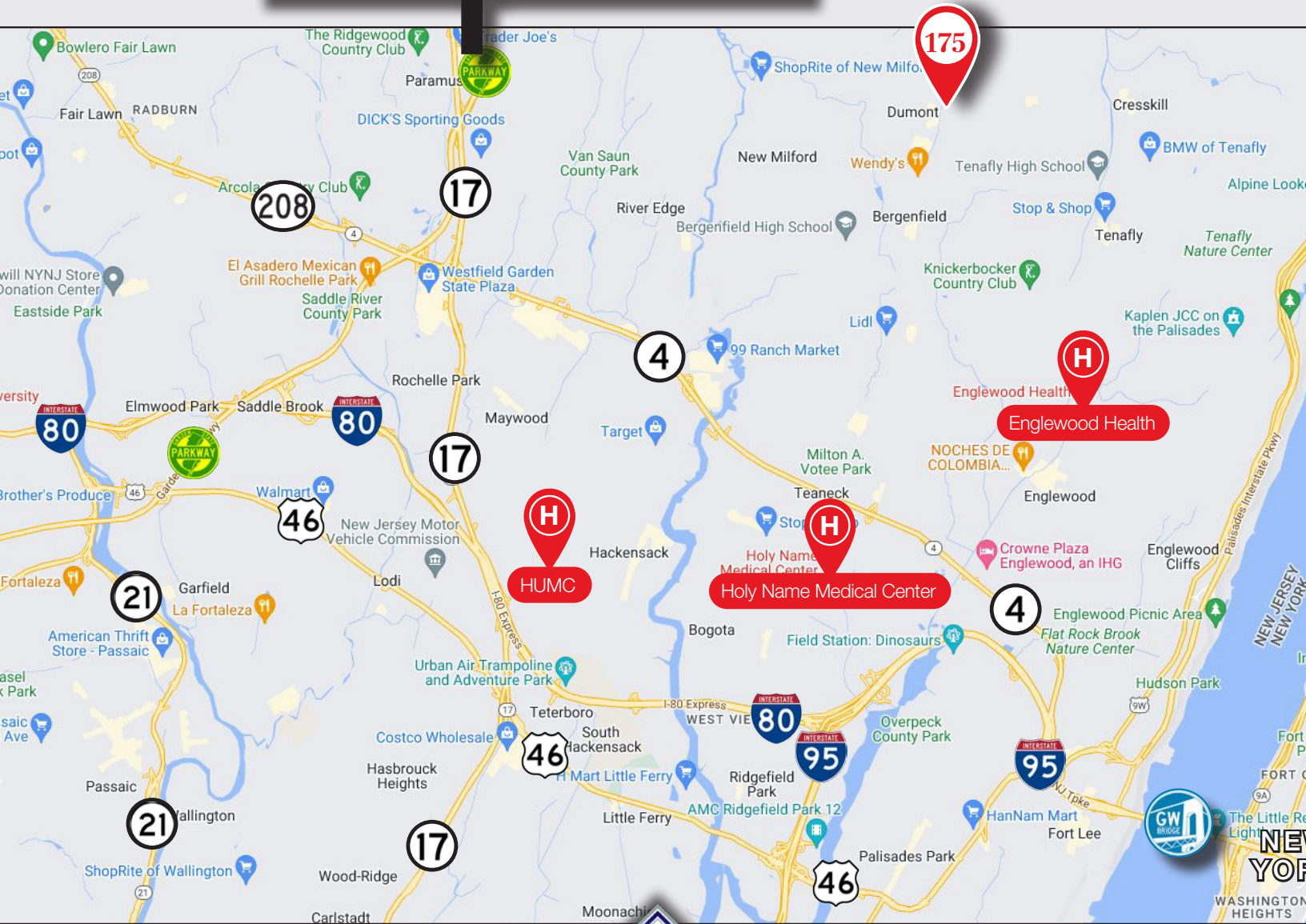


Washington Plaza
175 Washington Avenue
 Dumont, New Jersey

Location MAP



Surrounding Hospitals:
 Englewood Hospital, HUMC, Holy Name Medical Center, Pascack Valley Hospital and The Valley Hospital



Darren M. Lizzack, MSRE
 Vice President
 201 488 5800 x104
 dlizzack@naihanson.com



Randy Horning, MSRE
 Vice President
 201 488 5800 x123
 rhorning@naihanson.com