



Prime retail space in signature downtown office tower

400 W Market | Louisville, KY



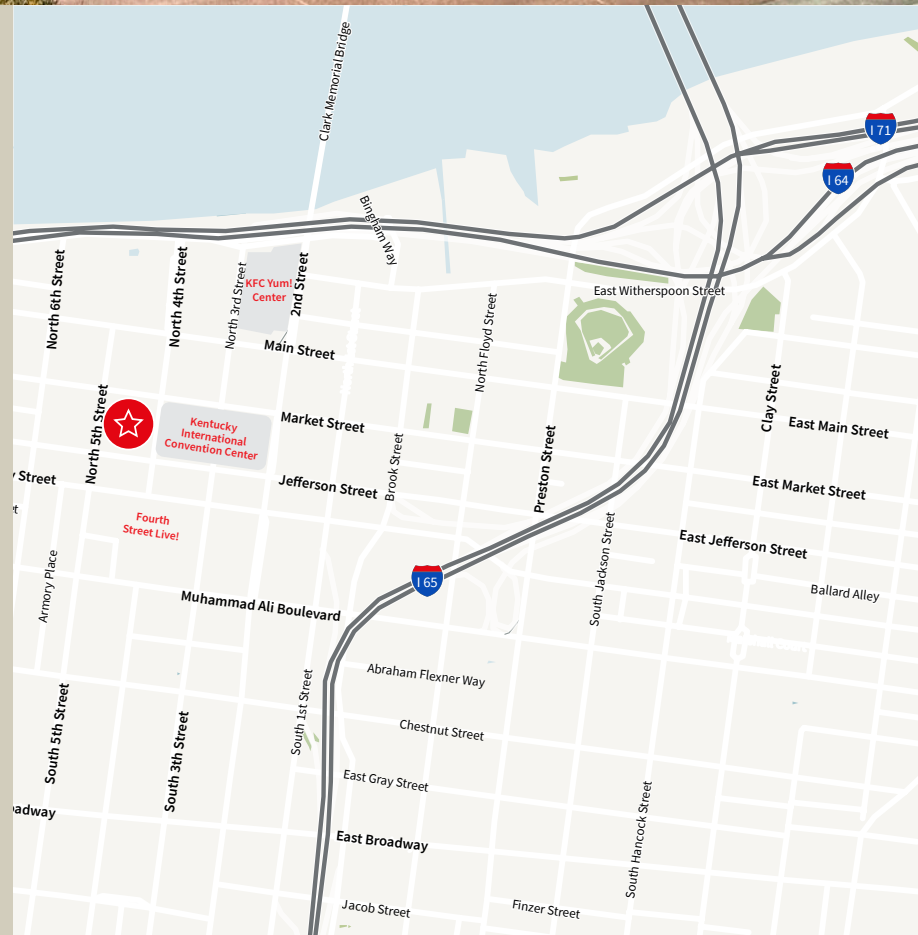
5,540 s.f. with plaza access and tower access

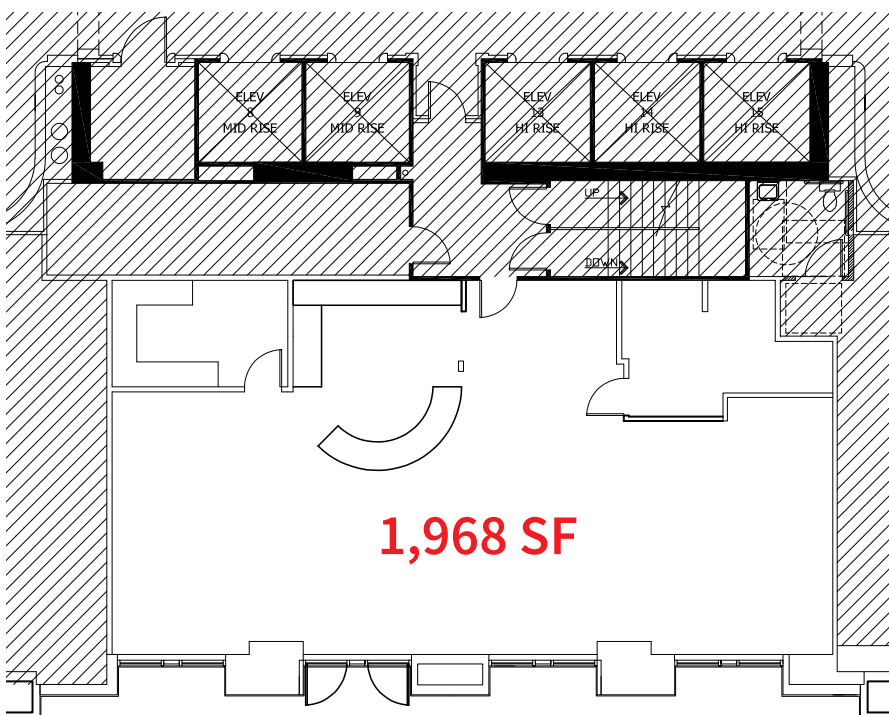
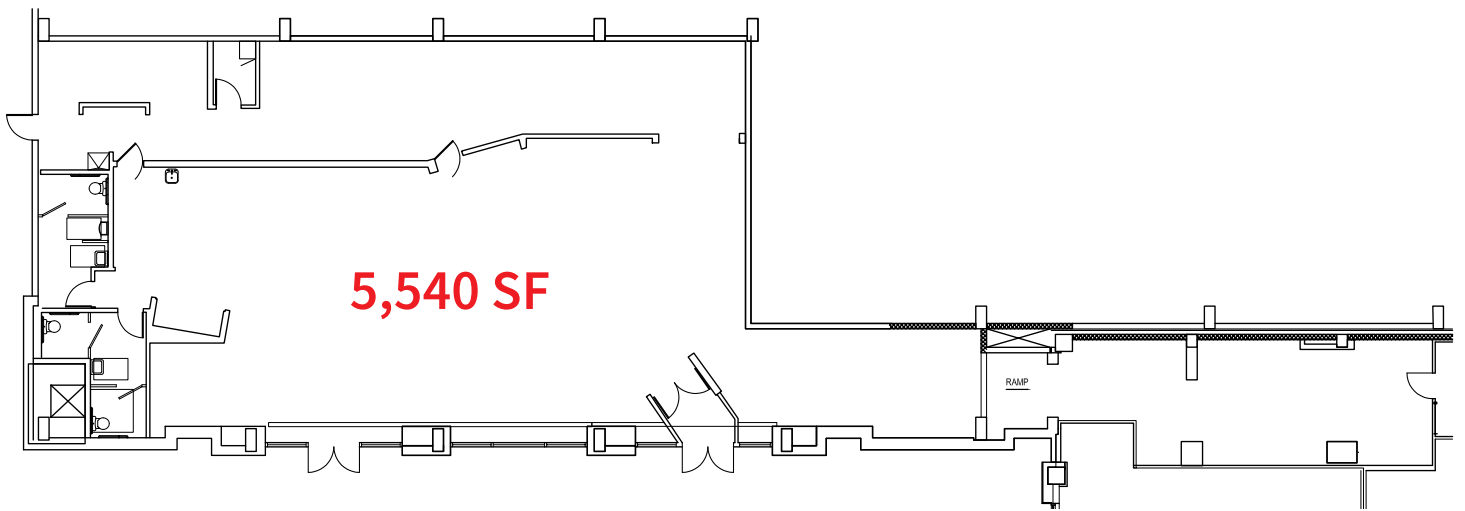


1,968 s.f. with tower lobby access



Highly-visible spaces with exterior seating and signage opportunities located across from Kentucky International Convention Center

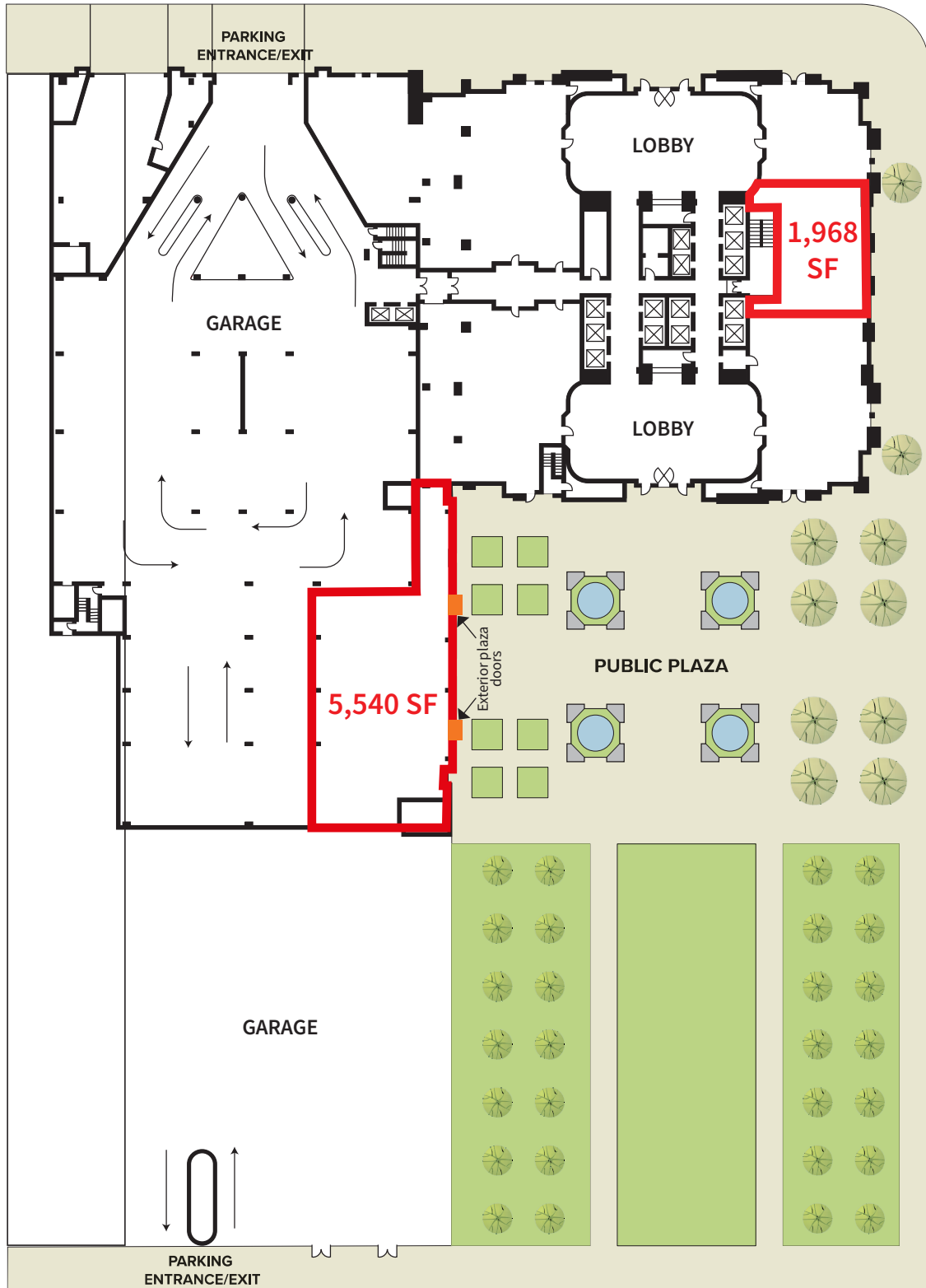




HIGHLIGHTS:

- Prime locations for coffee shops, bars, restaurants or any users seeking the best street-level exposure in downtown.
- The larger, 5,540 s.f. space offers direct access to the plaza allowing for ample outdoor seating. It also features direct, covered access to the office tower and the attached parking garage.
- The 1,968 s.f. suite is directly across from the Kentucky International Convention Center, offering excellent visibility.

MARKET STREET



JEFFERSON STREET

Contact us for more information

Doug Owen, SIOR

+1 502 394 2516

doug.owen@am.jll.com

Yandell Wood, CCIM

+1 502 394 2519

yandell.wood@am.jll.com



DISCLAIMER: Although information has been obtained from sources deemed reliable, Owner, Jones Lang LaSalle, and/or their representatives, brokers or agents make no guarantees as to the accuracy of the information contained herein, and offer the Property without express or implied warranties of any kind. The Property may be withdrawn without notice. If the recipient of this information has signed a confidentiality agreement regarding this matter, this information is subject to the terms of that agreement. ©2021. Jones Lang LaSalle. All rights reserved.