

11500 Joseph Campau Ave,  
Hamtramck, MI 48212



@properties®

Asking at \$1,400,000.00

Offered by Adam Soroka  
586.563.7792  
adamsoroka@atproperties.com

# Overview

---

Unique Building built in 1929 located in the bustling neighborhood of Hamtramck along the Joseph Campau corridor. Formerly an auto sales center. Current use a showroom and manufacturing space for a boutique furniture company. The first floor offers a showroom with original terrazzo / concrete floors, 12 ft ceilings, private offices. The 2nd floor is currently a work space for manufacturing, lunch room, and offices. There is parking deck that goes all the way to the roof.

- 
- Live / Work
  - Auto Sales
  - Office
  - Retail
  - Bar / Restaurant



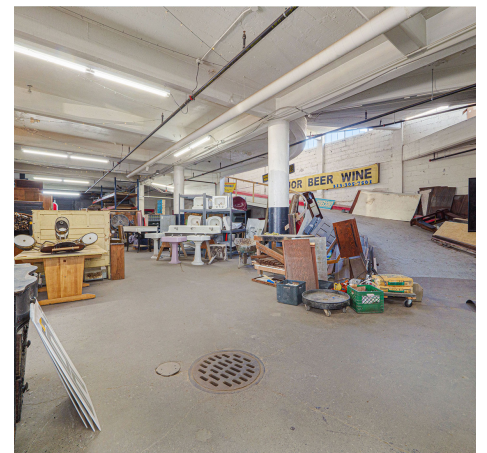
Showroom



Showroom

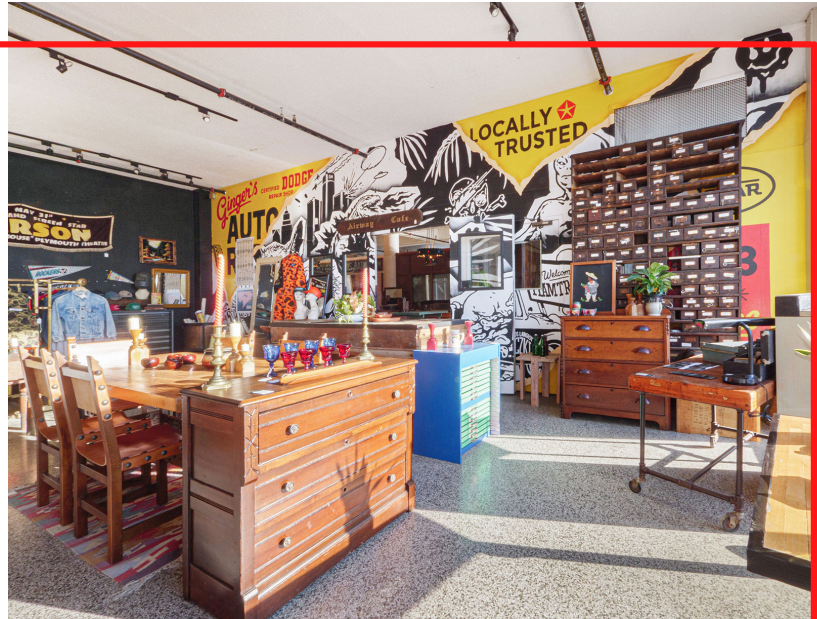


Workshop

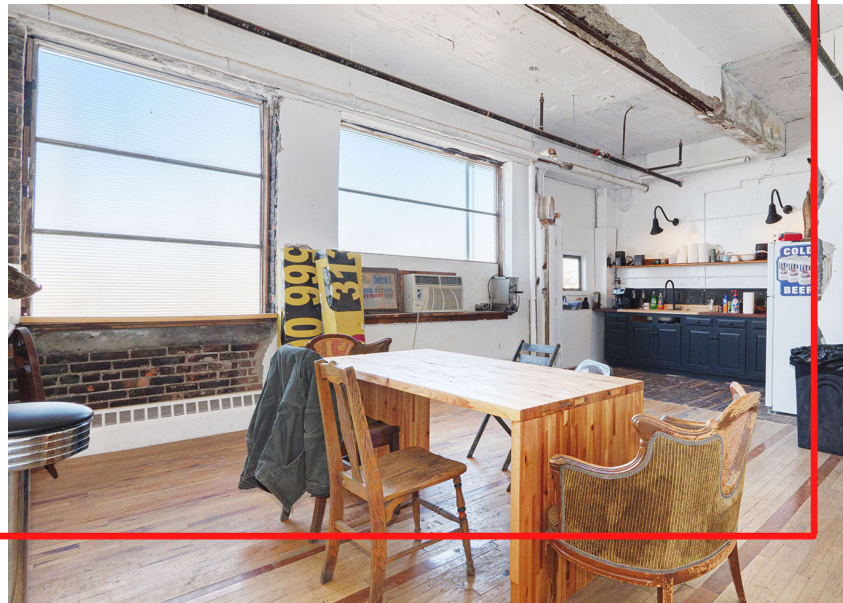


Workshop

# Interiors



# Interiors



# Exteriors



# Details

---

- 24,000 sq ft
- Roll up commercial door
- New Roof - 2017
- Fire Suppression - 2017
- Updated lighting grid to LED's 2017
- Zoning is



# Hamtramck



- Hamtramck is a major city located and surrounded by Detroit. It is 2.1 Sq miles.
- Its made up of about 29,000 people. About 11,000 people per sq mile. By far the most densley-populated municipality in Michigan.
- Melting pot of different cultures
- Popular nearby eateries, bar, & shops

@properties®