

150 Piney Grove Church Rd Siler City NC



- 10866 Square Ft of Industrial Space
- Three Acre Site with Plenty of Yard
- Zoning Allows for Multiple Uses
- \$6.50 per Foot NNN
- \$0.75 TICAM
- 3 Year Minimum Term

Doug Jacobs, Broker

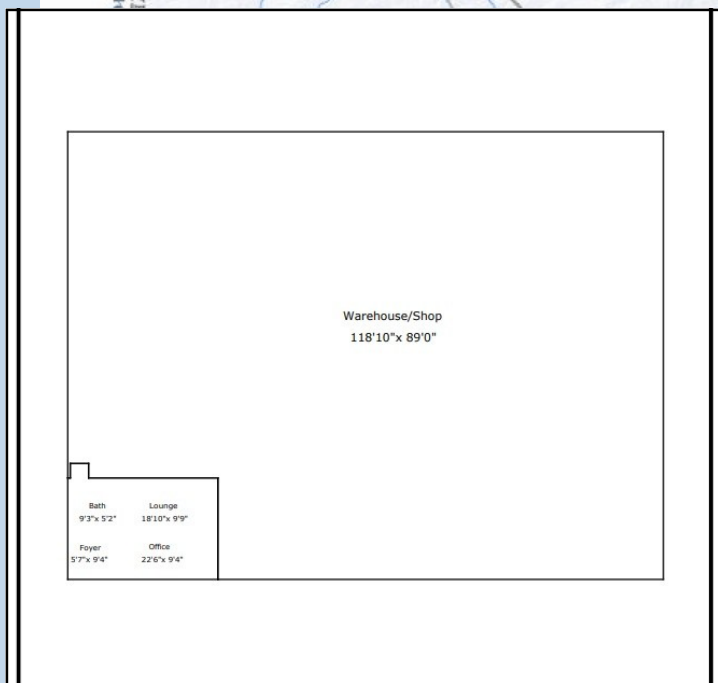


COLDWELL BANKER
ADVANTAGE

2128 High House Rd
Suite 100
Cary NC 27519

Doug: 919-612-1532
E-mail: doug@jacobsteamrealestate.com

150 Piney Grove Church Rd Siler City NC



- Just North of Downtown Siler City
- Convenient to US 64 and US 421

Doug Jacobs, Broker



COLDWELL BANKER
ADVANTAGE

2128 High House Rd
Suite 100
Cary NC 27519

Doug: 919-612-1532
E-mail: doug@jacobsteamrealestate.com