



2316 Vine St

6,878 SF | Call for Details
Retail Space **For Lease**

2316 Vine St

2316 Vine St
Eau Claire, Wisconsin 54703

Property Overview

Position your business for success with this highly visible single-tenant retail building conveniently located just off Clairemont Ave/Hwy 12! Boasting strong traffic counts and excellent signage opportunities, this prime location is just steps from Festival Foods, Menards, and other national retailers. With easy access and outstanding exposure, this is an ideal opportunity for retail users looking to capture a high-volume customer base. Don't miss your chance to establish your brand in one of Eau Claire's most sought-after commercial corridors!

Offering Summary

Lease Rate:	Call for Details
Building Size:	6,878 SF
Available SF:	6,878 SF
Lot Size:	59,577 SF

For More Information

Ryan Erickson

Director of Brokerage Services
O: 715 318 8666
ryan@naicommonweal.com

Elliott Paetzold

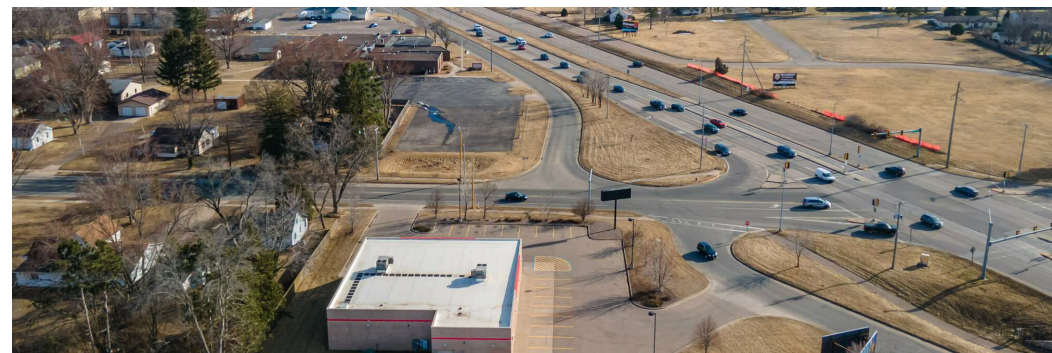
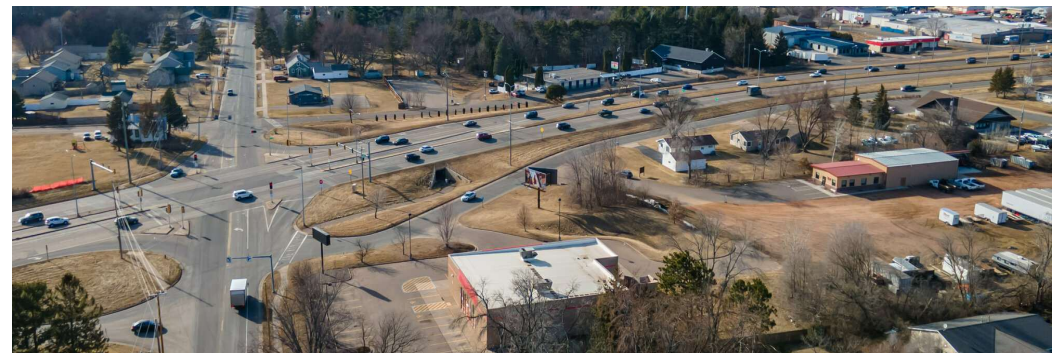
Real Estate Analyst/Development Assoc.
O: 715 318 8661
elliott@naicommonweal.com





Imagery ©2025 Airbus, CNES / Airbus, Maxar Technologies, USDA/FPAC/GEO





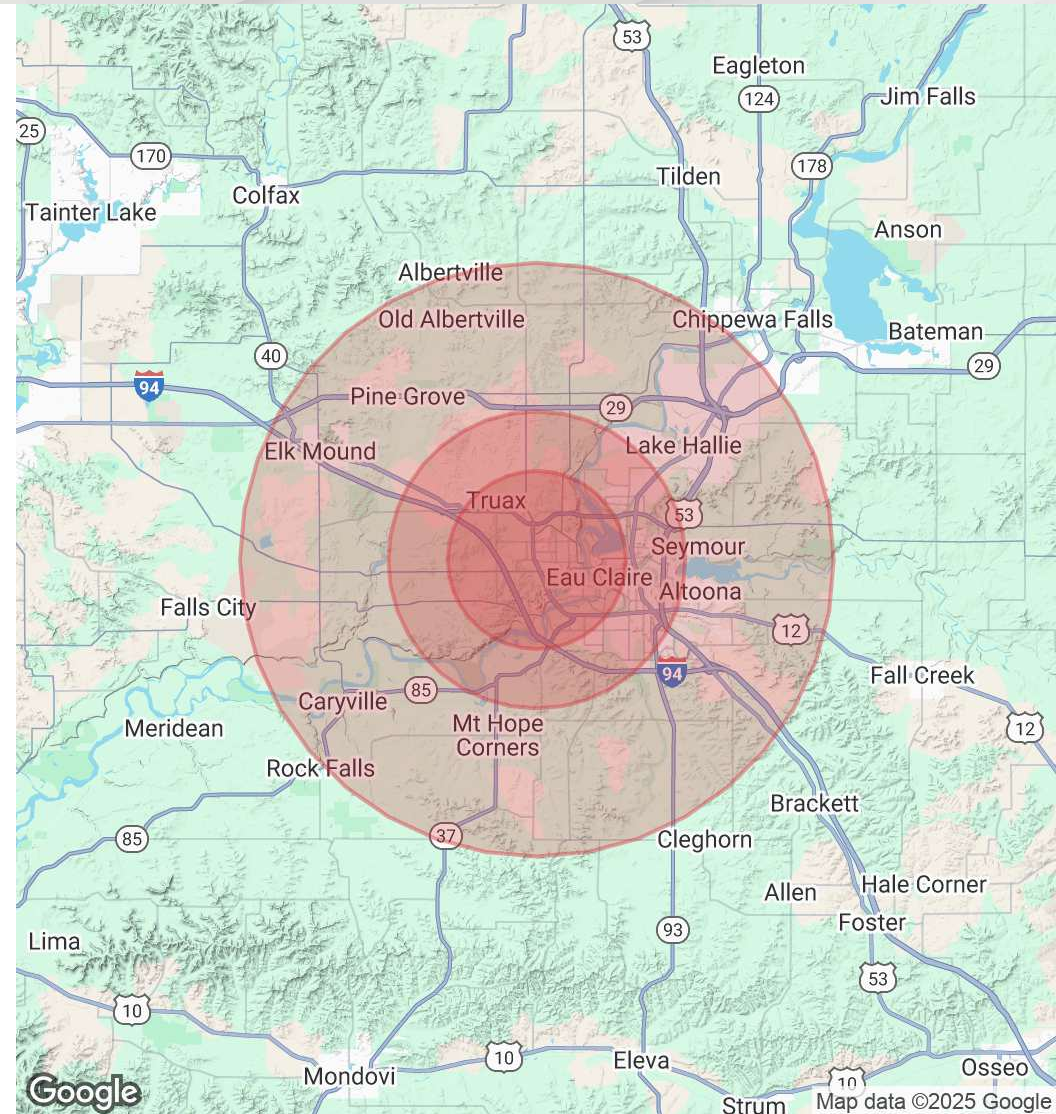
Population

	3 Miles	5 Miles	10 Miles
Total Population	38,643	75,108	114,865
Average Age	36	38	39
Average Age (Male)	35	37	38
Average Age (Female)	36	39	40

Households & Income

	3 Miles	5 Miles	10 Miles
Total Households	15,813	31,216	47,100
# of Persons per HH	2.4	2.4	2.4
Average HH Income	\$78,015	\$87,566	\$92,945
Average House Value	\$264,339	\$286,258	\$301,137

Demographics data derived from AlphaMap





Ryan Erickson

Director of Brokerage Services

Direct: 715.318.8666
ryan@naicommonweal.com

WI #58263-90 // MN #40659516



Elliott Paetzold

Real Estate Analyst/Development Assoc.

Direct: 715.318.8661
elliott@naicommonweal.com

WI #112110-94

BROKER DISCLOSURE TO NON-RESIDENTIAL CUSTOMERS

Prior to negotiating on your behalf the brokerage firm, or an agent associated with the firm, must provide you the following disclosure:

BROKER DISCLOSURE TO CUSTOMERS

You are a customer of the brokerage firm (hereinafter Firm). The Firm is either an agent of another party in the transaction or a subagent of another firm that is the agent of another party in the transaction. A broker or a salesperson acting on behalf of the Firm may provide brokerage services to you. Whenever the Firm is providing brokerage services to you, the Firm and its brokers and salespersons (hereinafter Agents) owe you, the customer, the following duties:

- The duty to provide brokerage services to you fairly and honestly.
- The duty to exercise reasonable skill and care in providing brokerage services to you.
- The duty to provide you with accurate information about market conditions within a reasonable time if you request it, unless disclosure of the information is prohibited by law.
- The duty to disclose to you in writing certain Material Adverse Facts about a property, unless disclosure of the information is prohibited by law.
- The duty to protect your confidentiality. Unless the law requires it, the Firm and its Agents will not disclose your confidential information or the confidential information of other parties.
- The duty to safeguard trust funds and other property held by the Firm or its Agents.
- The duty, when negotiating, to present contract proposals in an objective and unbiased manner and disclose the advantages and disadvantages of the proposals.

Please review this information carefully. An Agent of the Firm can answer your questions about brokerage services, but if you need legal advice, tax advice, or a professional home inspection, contact an attorney, tax advisor, or home inspector. This disclosure is required by section 452.135 of the Wisconsin statutes and is for information only. It is a plain-language summary of the duties owed to a customer under section 452.133 (1) of the Wisconsin statutes.

CONFIDENTIALITY NOTICE TO CUSTOMERS

BROKER WILL KEEP CONFIDENTIAL ANY INFORMATION GIVEN TO BROKER IN CONFIDENCE, OR ANY INFORMATION OBTAINED BY BROKER THAT HE OR SHE KNOWS A REASONABLE PERSON WOULD WANT TO BE KEPT CONFIDENTIAL, UNLESS THE INFORMATION MUST BE DISCLOSED BY LAW OR YOU AUTHORIZE THE BROKER TO DISCLOSE PARTICULAR INFORMATION. A BROKER SHALL CONTINUE TO KEEP THE INFORMATION CONFIDENTIAL AFTER BROKER IS NO LONGER PROVIDING BROKER SERVICES TO YOU. THE FOLLOWING INFORMATION IS REQUIRED TO BE DISCLOSED BY LAW:

1. MATERIAL ADVERSE FACTS, AS DEFINED IN SECTION 452.01 (5G) OF THE WISCONSIN STATUTES (**SEE DEFINITION OF MATERIAL ADVERSE FACTS**).
2. ANY FACTS KNOWN BY THE BROKER THAT CONTRADICT ANY INFORMATION INCLUDED IN A WRITTEN INSPECTION REPORT ON THE PROPERTY OR REAL ESTATE THAT IS THE SUBJECT OF THE TRANSACTION.

TO ENSURE THAT THE BROKER IS AWARE OF WHAT SPECIFIC INFORMATION YOU CONSIDER CONFIDENTIAL, YOU MAY LIST THAT INFORMATION BELOW. AT A LATER TIME, YOU MAY ALSO PROVIDE THE BROKER WITH OTHER INFORMATION YOU CONSIDER TO BE CONFIDENTIAL.

CONFIDENTIAL INFORMATION:

NON-CONFIDENTIAL INFORMATION (The following information may be disclosed by Broker): _____

(INSERT INFORMATION YOU AUTHORIZE THE BROKER TO DISCLOSE SUCH AS FINANCIAL QUALIFICATION INFORMATION.)

CONSENT TO TELEPHONE SOLICITATION

We agree that the Broker and any affiliated settlement service providers (for example, a mortgage company or title company) may call our/my home or cell phone numbers regarding issues, goods and services related to the real estate transaction until I/we withdraw this consent in writing. **List Home/Cell Numbers:** _____

SEX OFFENDER REGISTRY

Notice: You may obtain information about the sex offender registry and persons registered with the registry by contacting the Wisconsin Department of Corrections on the internet at: <http://offender.doc.state.wi.us/public/> or by phone 608-240-5830.

DEFINITION OF MATERIAL ADVERSE FACTS

A "material adverse fact" is defined in Wis. Stat § 452.01 (5g) as an adverse fact that a party indicates is of such significance, or that is generally recognized by a competent licensee as being of such significance to a reasonable party, that it affects or would affect the party's decision to enter into a contract or agreement concerning a transaction or affects or would affect the party's decision about the terms of such a contract or agreement. An "adverse fact" is defined in Wis Stat § 452.01 (1e) as a condition or occurrence that a competent licensee generally recognizes will significantly and adversely affect the value of the property, significantly reduce the structural integrity of improvements to real estate, or present a significant health risk to occupants of the property; or information that indicates that a party to a transaction is not able to or does not intend to meet his or her obligations under a contract or agreement made concerning the transaction.