

FOR LEASE – PROFESSIONAL OFFICE SPACE

403 WESTPARK CT | PEACHTREE CITY, GEORGIA

SECOND FLOOR SUITE AVAILABLE



AVAILABLE:

*2nd Floor
Suite 210– 2,409 RSF*



**STRATEGIC
LOCATION**

- Proactive community, Chamber of Commerce and Development Authority
- Located only 35 miles southwest of Atlanta
- Located only 25 miles southwest of Hartfield International Airport.
- Strong and highly educated workforce
- Draw Area Total Employment – 753,760 people
- Peachtree City's strong business environment includes companies such as NCR, TDK, Cooper Lighting, SANY, Panasonic, Avery Denison...
- Located within Westpark Corporate Park with easy access to hotels, restaurants and retail.

EdifyCRE
COMMERCIAL REAL ESTATE

FOR LEASE – PROFESSIONAL OFFICE SPACE

403 WESTPARK CT | PEACHTREE CITY, GEORGIA



BUILDING SPECIFICATIONS

Address	403 Westpark, Ct, Peachtree City, GA 30269
County	Fayette
GLA	41,837 sq ft
Available	2nd Floor Suite 210– 2,409 RSF
Elevator	1 Located in main lobby
Sprinkler	Full Building
Year Built	1999
Land Area	2.98 acres
Parking	3.2 spaces/1,000 sq ft
Stories	2

TRANSPORTATION

Highways	Hwy 74 – 0.2 Miles Hwy 54 – 0.1 Miles I-85 – 9 Miles
Local Airport	Falcon Field – 4 Miles
Commercial Airport	Hartsfield-Jackson Atlanta – 25 Miles



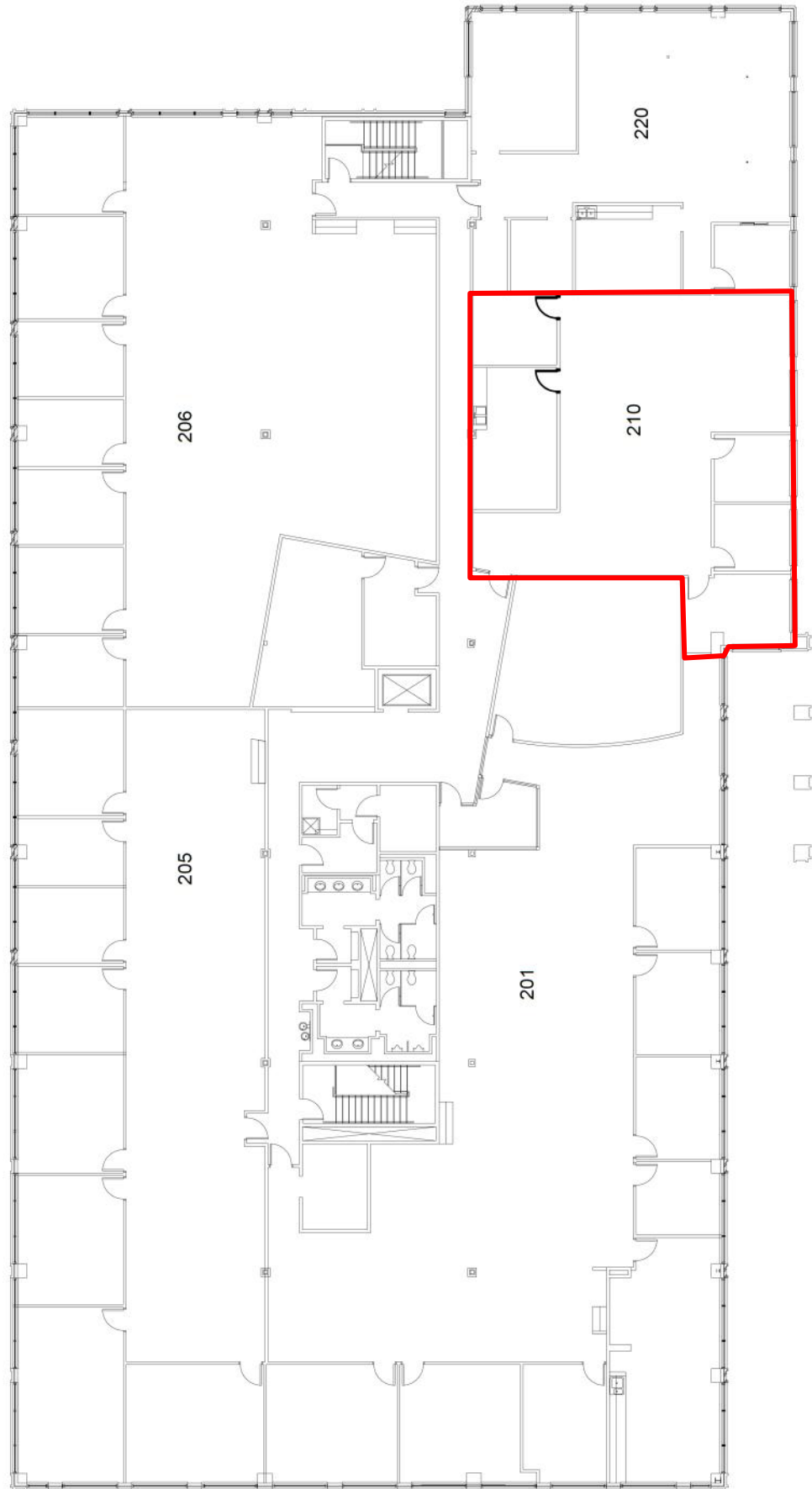
FOR LEASE – PROFESSIONAL OFFICE SPACE
403 WESTPARK CT | PEACHTREE CITY, GEORGIA



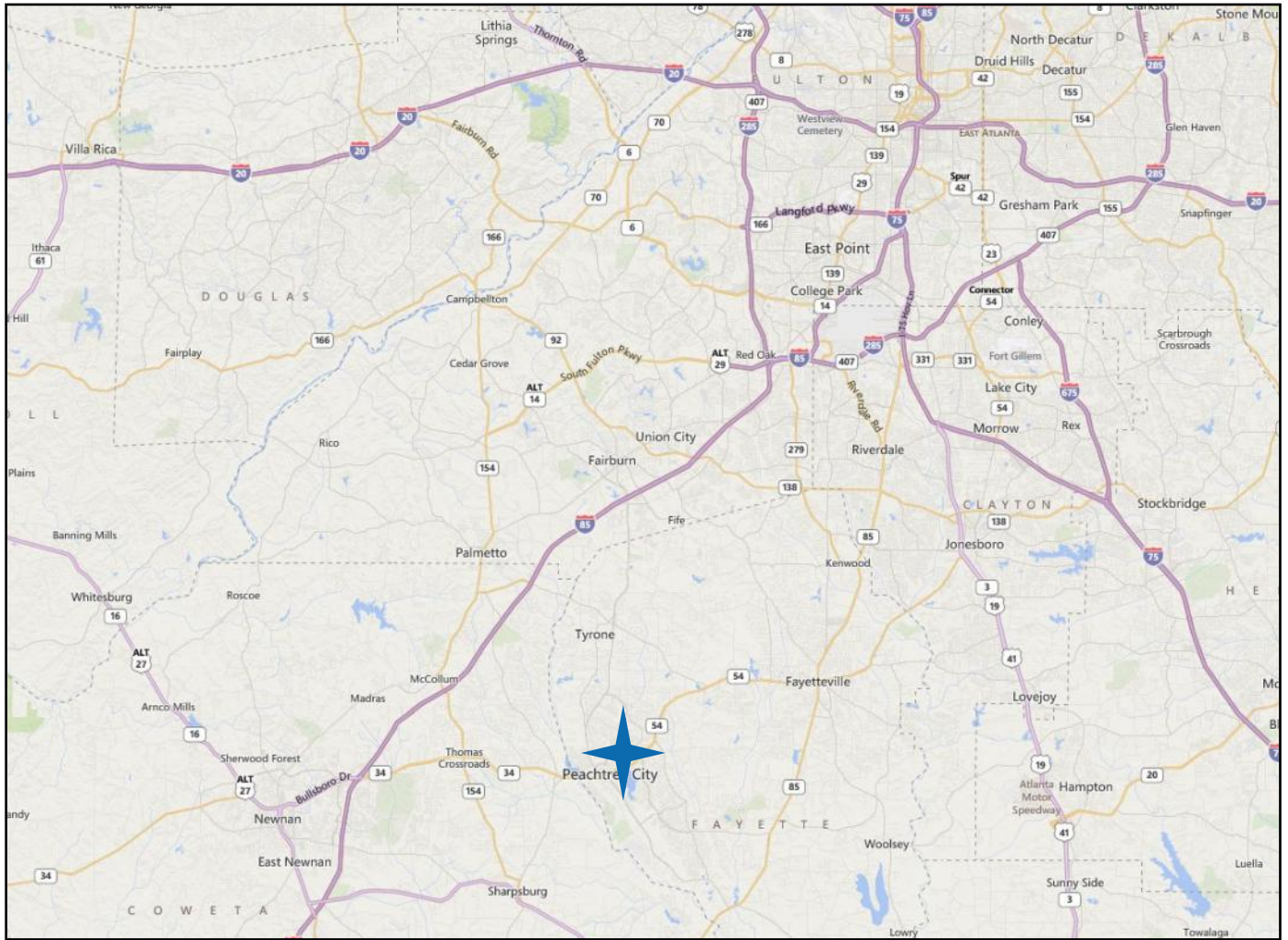
The information presented herein is provided as is, without warranty of any kind. Edify CRE, LLC assumes no liability for errors and omissions.

FOR LEASE – PROFESSIONAL OFFICE SPACE
403 WESTPARK CT | PEACHTREE CITY, GEORGIA
2nd Floor

Suite 210
AVAILABLE 2,409 RSF



FOR LEASE – PROFESSIONAL OFFICE SPACE 403 WESTPARK CT | PEACHTREE CITY, GEORGIA



For more information, contact:

Brad Jubin
678-481-5676
Brad@EdifyCRE.com

Edify CRE, LLC
1029 Peachtree Pkwy N,
Suite 323, Peachtree City,
GA 30269

