

SKYPORT PLAZA

SAN JOSE / CA

1700

1650 & 1700 Technology Drive
San Jose, CA

WWW.SKYPORTPLAZAHPP.COM



SCALABLE CORPORATE CAMPUS

Available
Summer 2022

2-Building Campus
+/- 388,566 SF @ 8 Stories



100% Carbon Neutral Operations



Up to +/- 370,000 SF of
Expansion Space Available



Three Class A Office Buildings:



- Skyport: Two buildings @ 8 Stories

- Cloud 10: One building @ 9 Stories





CAMPUS FEATURES

ONSITE AMENITIES

Professional Child Daycare (Bright Horizons)

Outdoor Amenity Area with Wi-Fi

On-site Security & Property Management

Valley & Mountain Views

Premier Highway 87 Identity & Signage Opportunities

Abundant Surface & Secured Garage Parking w/EV chargers

On-site Retail & Restaurants (Ike's Love & Sandwiches + Vito's Trattoria + Ladda's Thai)

Exclusive Outdoor Courtyard with Basketball Court and Soft Seating





WALK TO

VTA Light Rail Station



Mineta International Airport



New Urban Residential



**Hotels, 20+ Restaurants
& Retail Services**



City Park

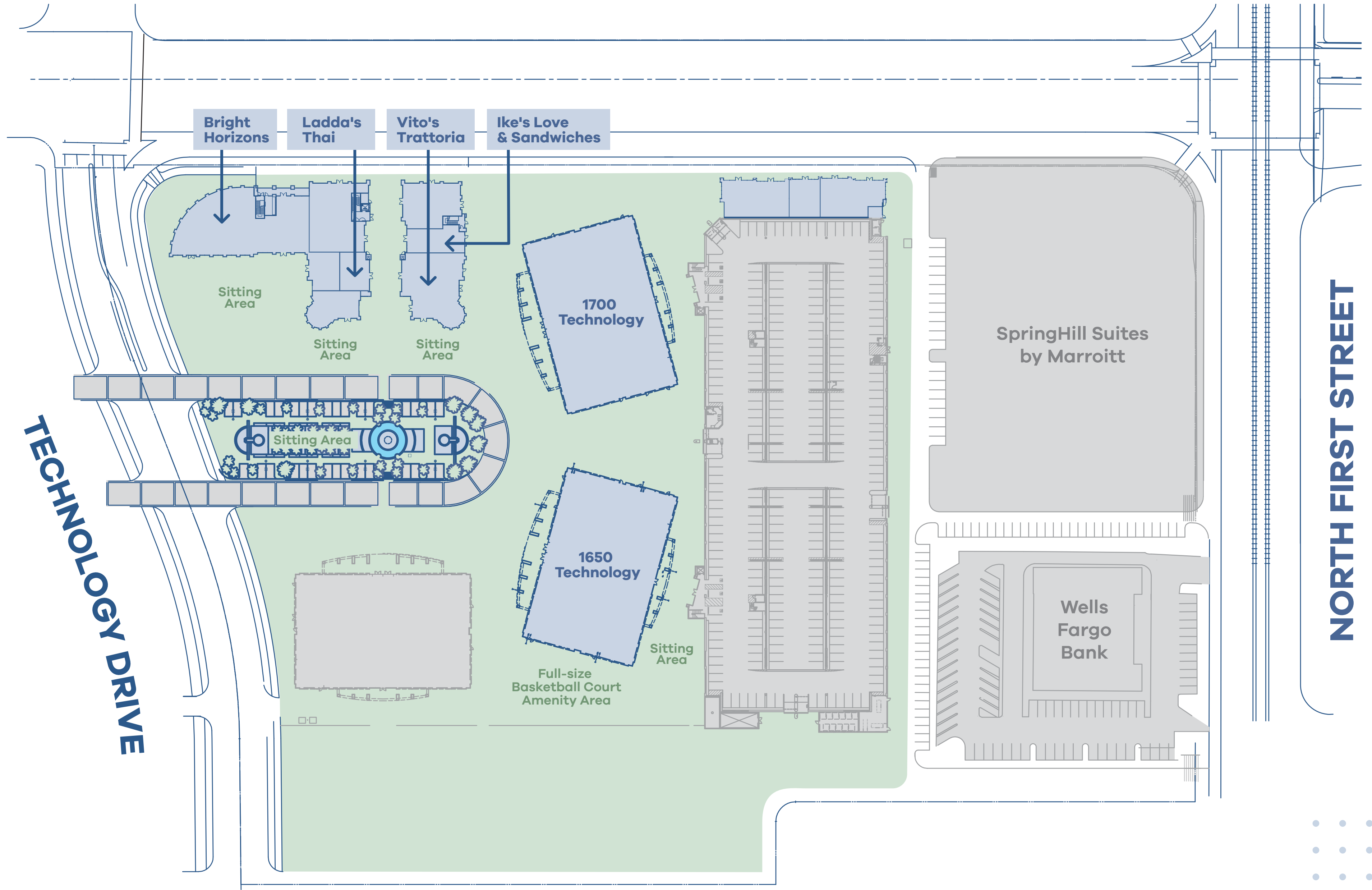


COMMUTER-FRIENDLY

Direct Access to Highway 87

**Close Access to Highways
101/280 & Interstate 880**

SKYPORT PLAZA SITE PLAN



TECHNOLOGY DRIVE

NORTH FIRST STREET

NEIGHBORHOOD AMENITIES

FINANCIAL INSTITUTIONS

- 1 Comercia Bank
- 2 Wells Fargo Bank
- 3 Provident Credit Union

ACCOMMODATIONS

- 1 Doubletree Hotel
- 2 Springhill Suites Marriott
- 3 Staybridge Suites
- 4 Comfort Inn

CAR RENTALS & MAIL SERVICES

- 1 76 Gas Station
- 2 Chevron Gas Station
- 3 Fed Ex Office
- 4 Fed Ex & UPS Drop Boxes

TRAILS

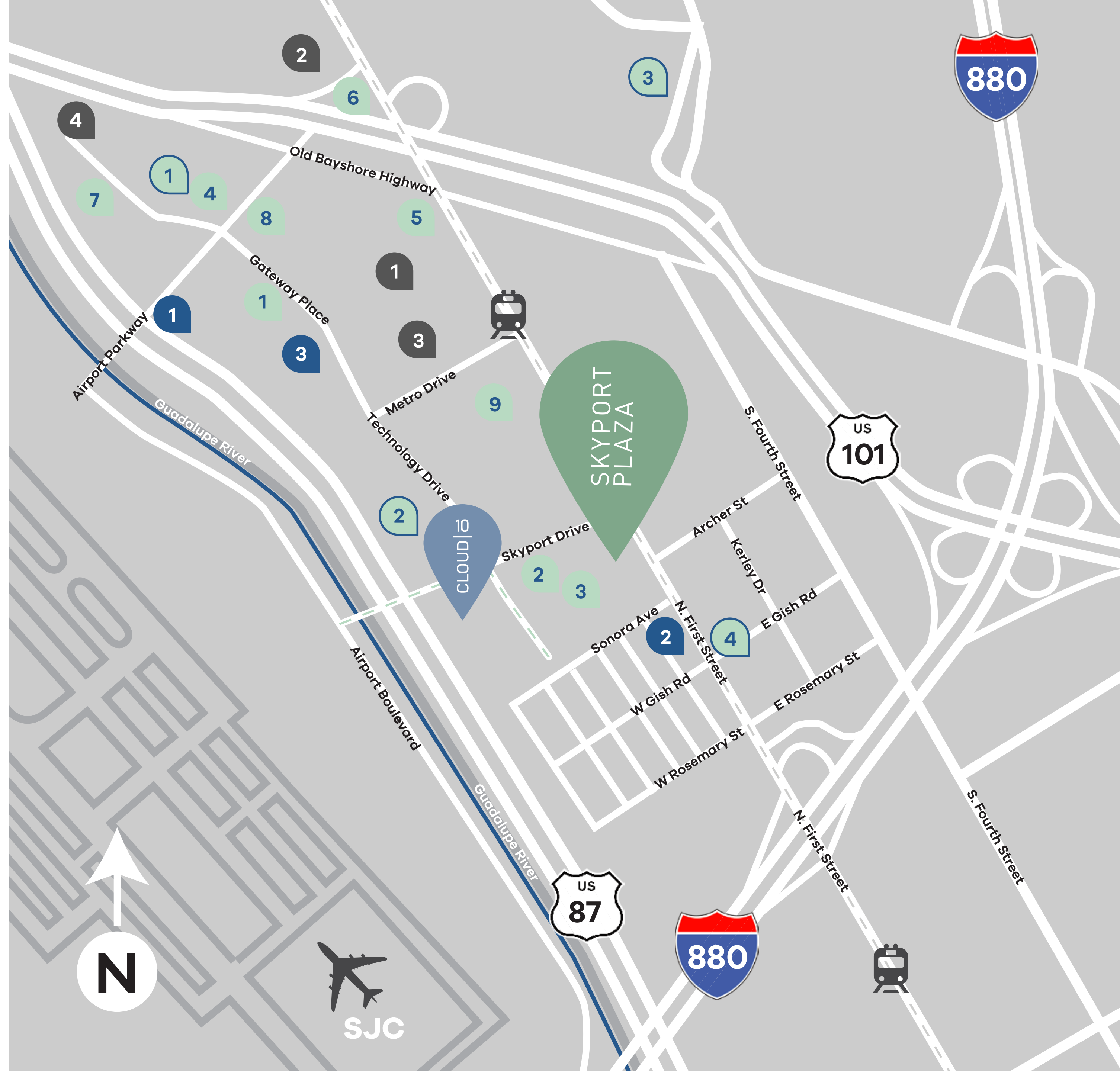
- Guadalupe River Trail

RESTAURANTS

- 1 Starbucks / TGI's Sushi
Bagel Street Cafe / Mi Casa
- 2 Ikes's Sandwiches
- 3 Vito's Trattoria
- 4 Spencer's
- 5 Starbucks / BurgerIM / Pho Bel-Air / LeanFeast
- 6 Subway
Denny's
- 7 Freddie's Sandwiches #2
- 8 Zone 8 Sports Bar & Grill
- 9 Oasis Deli

PUBLIC TRANSPORTATION

-  VTA Light Rail Station
-  San Jose Airport



BUILDING SPECIFICATIONS

YEAR BUILT:	2000	
CONSTRUCTION:	Steel frame with pre-cast concrete panel exterior wall system	
SIZE:	1650 Technology:	+194,284 rentable square feet
	1700 Technology:	+194,282 rentable square feet
AVERAGE FLOOR PLATES:	1650 Technology:	+24,316 rentable square feet
	1700 Technology:	+24,316 rentable square feet
SLAB-TO-SLAB HEIGHTS:	1st floor:	16'-0"
	2nd-7th floors:	13'-6"
	8th floor:	15'-6"
LOADING:	Lift-enabled	
HVAC (BUILDING CORE):	1650 Technology:	Two 250-ton Trane rotary screw water-cooled chillers
	1700 Technology:	Two 400-ton Trane centrifugal chillers
HVAC (TENANT LOAD):	1650 Technology:	Two 80-ton chillers
	1700 Technology:	N/A



BUILDING SPECIFICATIONS

CONTINUED

ELECTRICAL:

1650 Technology: 3,500 amps, 277/480-volt, 3-phase, 4-wire service

1700 Technology: 6,000 amps, 277/480-volt, 3-phase, 4-wire service

UTILITY SERVICES:

Water: San Jose Water Company
Sanitary/Sewer: City of San Jose
Gas & Electric: PG&E
Telephone: AT&T
Cable: Comcast
Trash/Recycling: Recology

ELEVATORS:

ThyssenKrupp elevators (4 per building)
• 6 passenger elevators (3 per building) with 3,500 pounds capacity each
• 2 service elevators (1 per building) with 4,500 pounds capacity each

PARKING:

3/1,000 | Surface & secured garage parking
6 dual-port EV charging stations / 12-car capacity

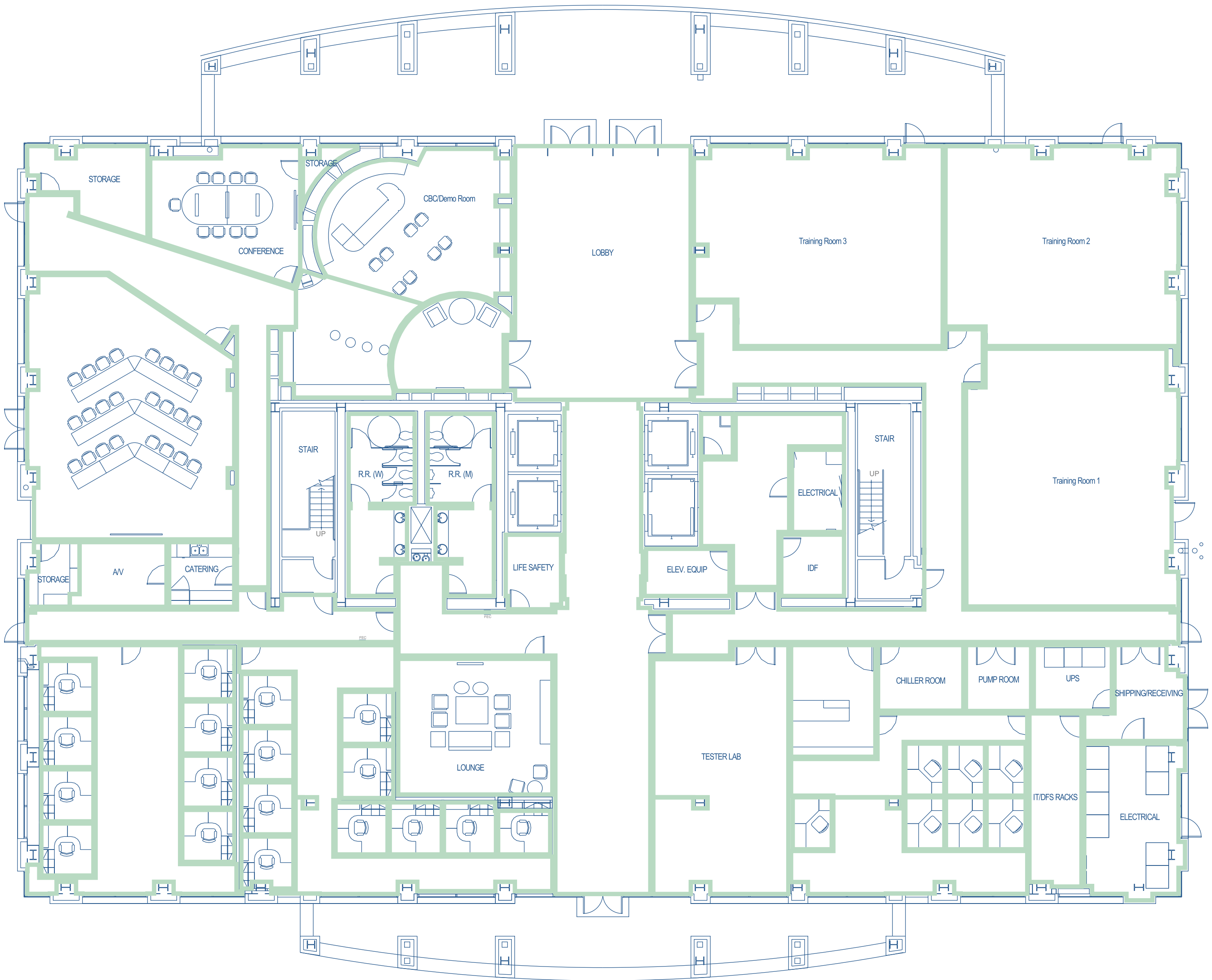
FIRE SPRINKLER SYSTEM:

Automatic wet pipe system with Pyrotronics MXL addressable fire alarm and emergency communications system



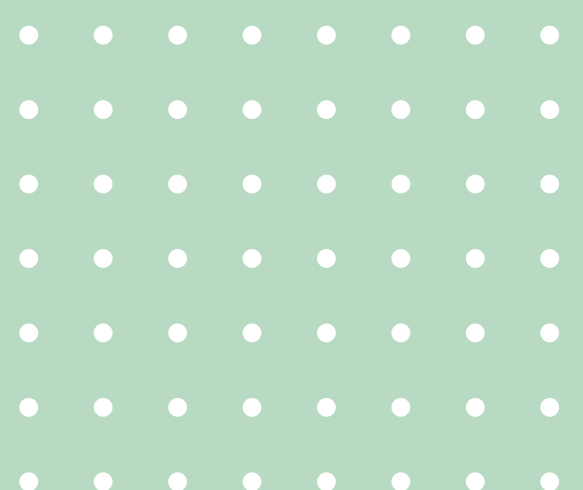
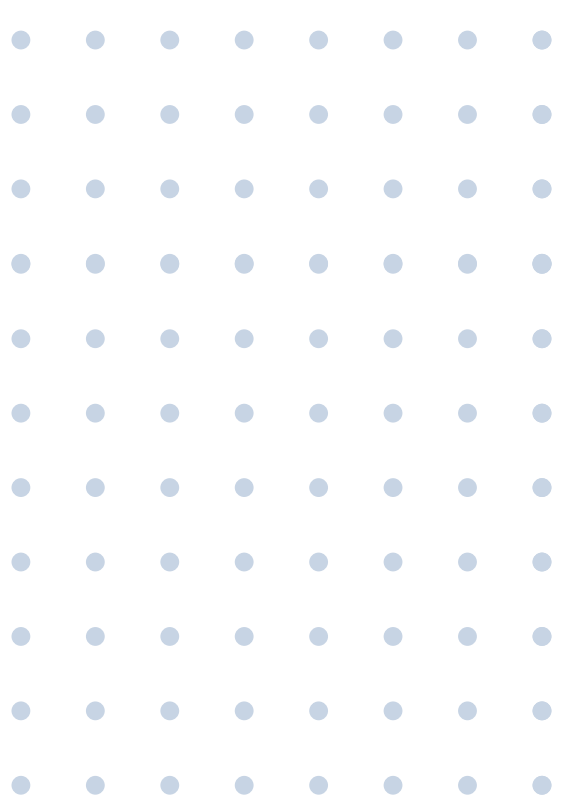
1650

TECHNOLOGY
DRIVE



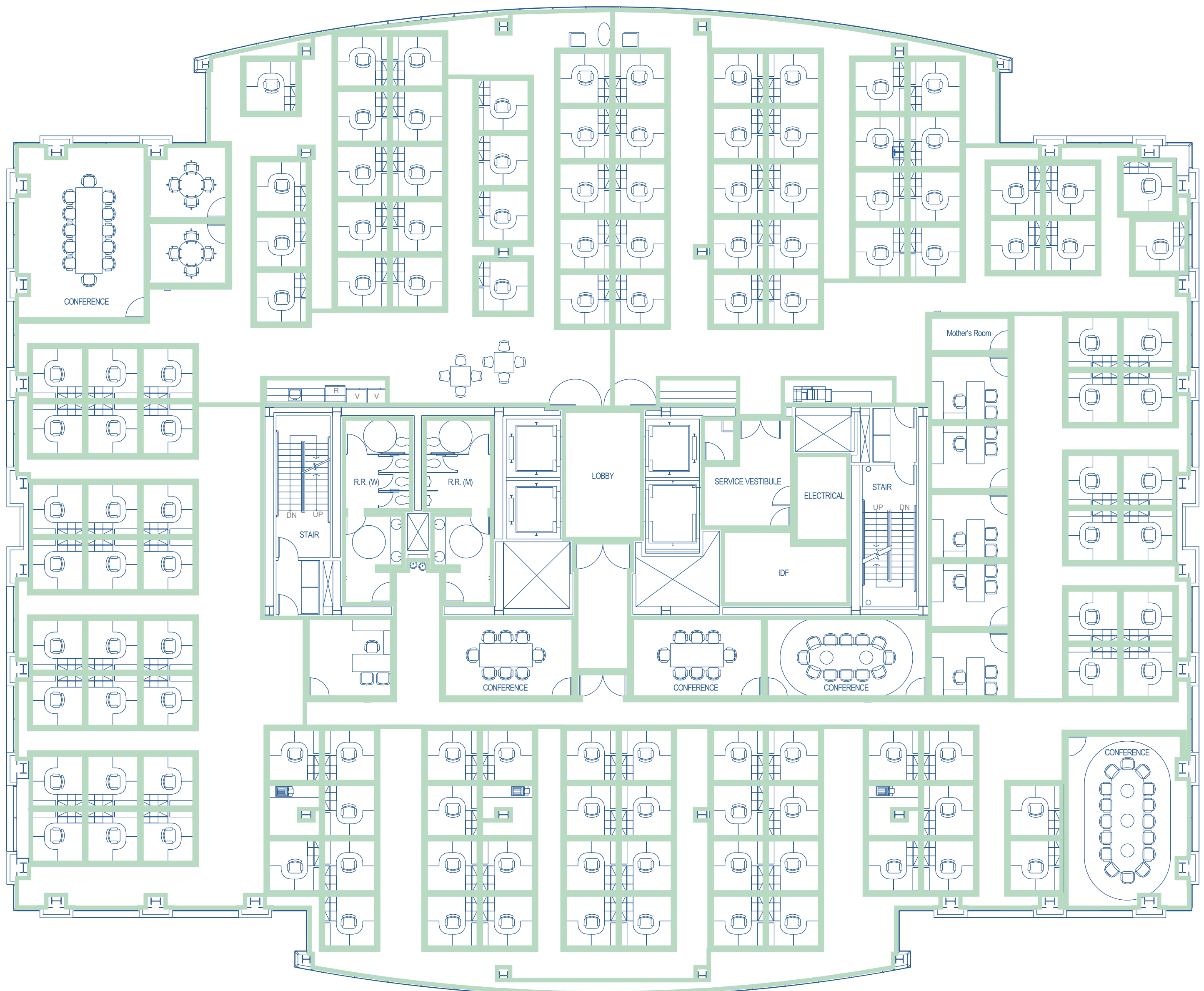
GROUND FLOOR SAMPLE

SKYPORT PLAZA



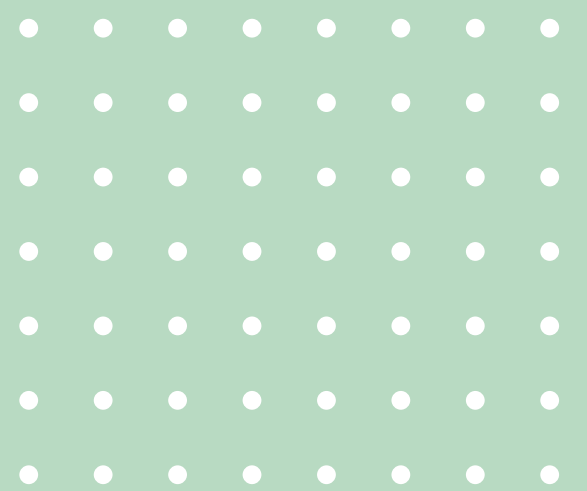
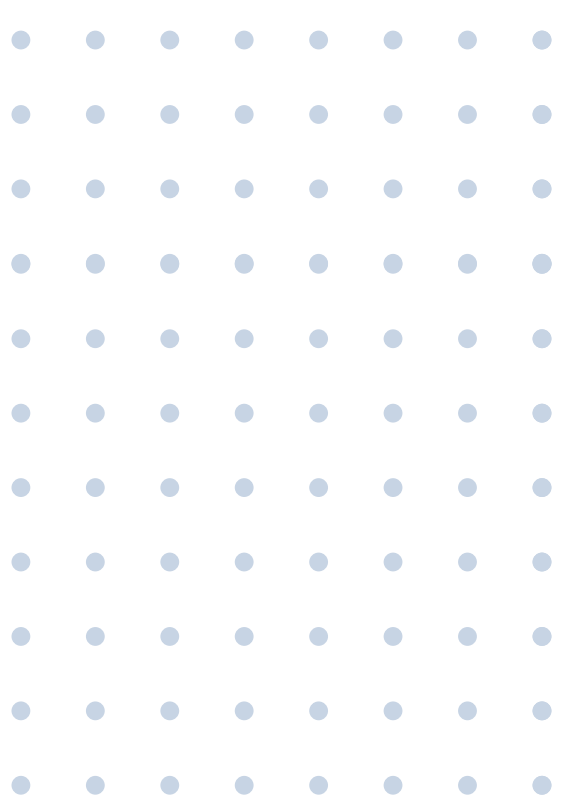
1650

TECHNOLOGY
DRIVE



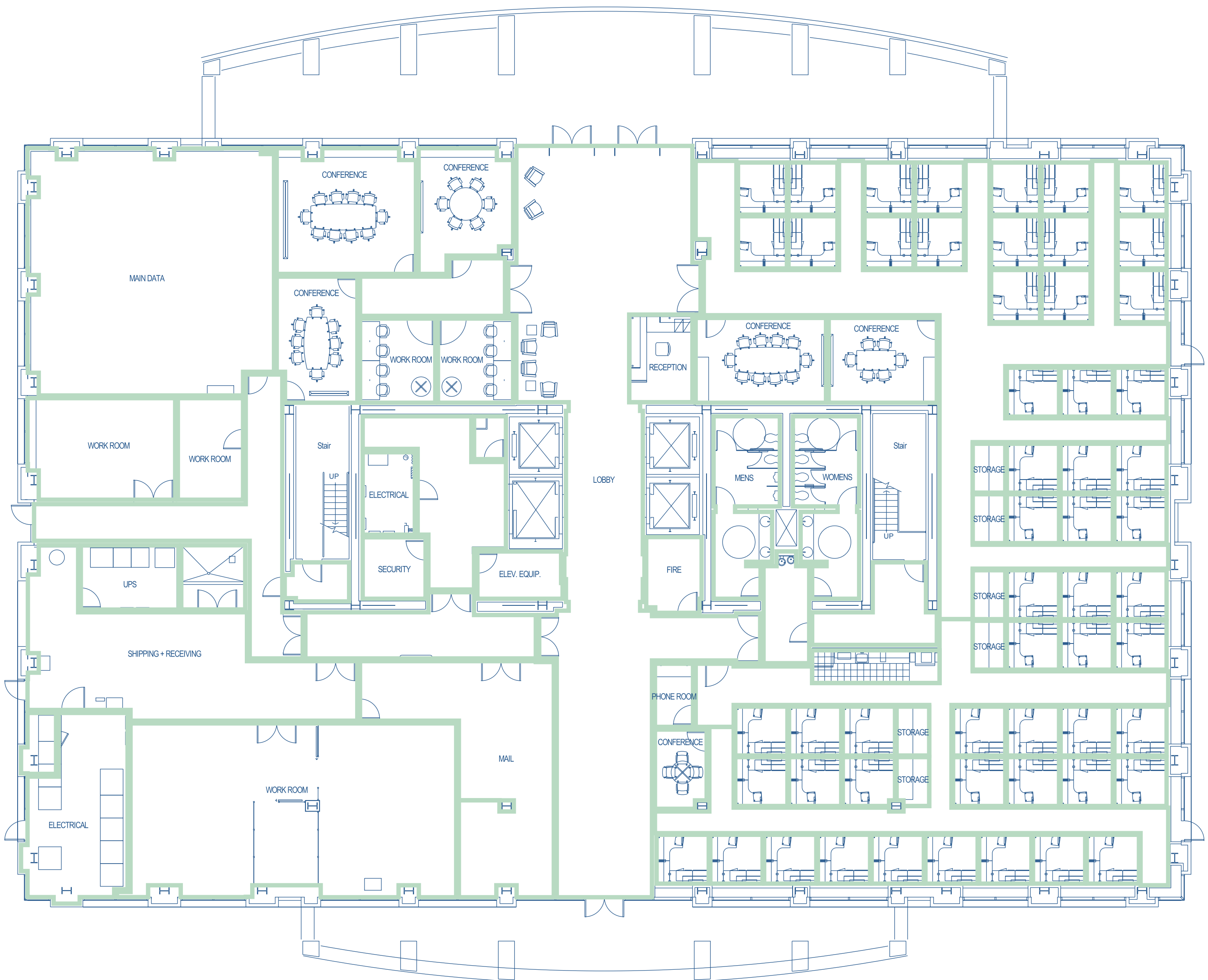
UPPER FLOOR
SAMPLE

SKYPORT PLAZA



1700

TECHNOLOGY
DRIVE

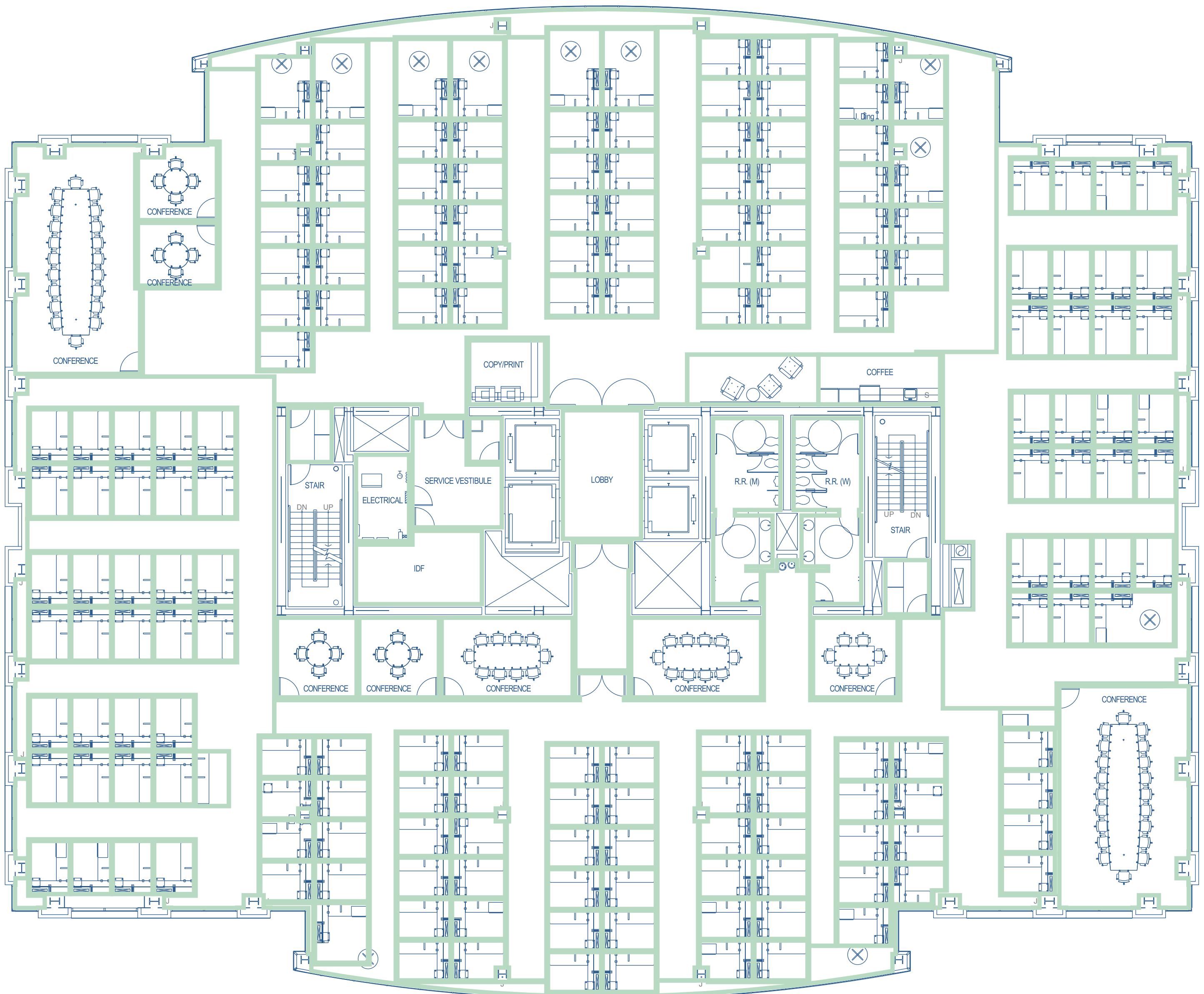


GROUND FLOOR

SAMPLE

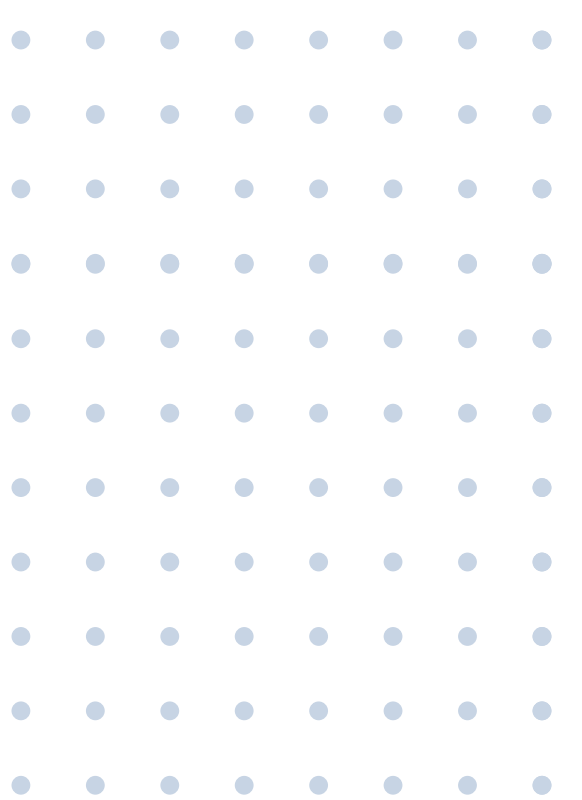
SKYPORT PLAZA

1700
TECHNOLOGY
DRIVE



UPPER FLOOR
SAMPLE

SKYPORT PLAZA





SKYPORT PLAZA
— SAN JOSE / CA

WWW.SKYPORTPLAZAHPP.COM

ROB SHANNON, SIOR, CCIM - CBRE
Executive Vice President
LIC. 00857593
+1 408 453 7486
ROB.SHANNON@CBRE.COM

CHRISTIAN MARENT - CBRE
Executive Vice President
LIC. 00932744
+1 408 453 7422
CHRISTIAN.MARENT@CBRE.COM

VINCENT SCOTT - CBRE
Executive Vice President
LIC. 01833636
+1 408 453 7433
VINCENT.SCOTT@CBRE.COM

