

# Former Bank Branch

Located at hard corner

175 E. Welch Rd  
Apopka, FL 32712  
[www.cbre.com/orlando](http://www.cbre.com/orlando)





# Property Overview

- + Available for sublease:
  - 3,612+ SF
  - 1.01 ± AC
- + Situated at hard corner along E. Welch Rd
- + Outparcel to Publix Super Market at Wekiva Plaza with cross-access to shopping plaza
- + 220.07' of frontage with excellent visibility
- + Traffic counts:
  - E. Welch Rd (17,700 AADT)
  - Rock Springs Rd (17,000 AADT)



**\$93,052**

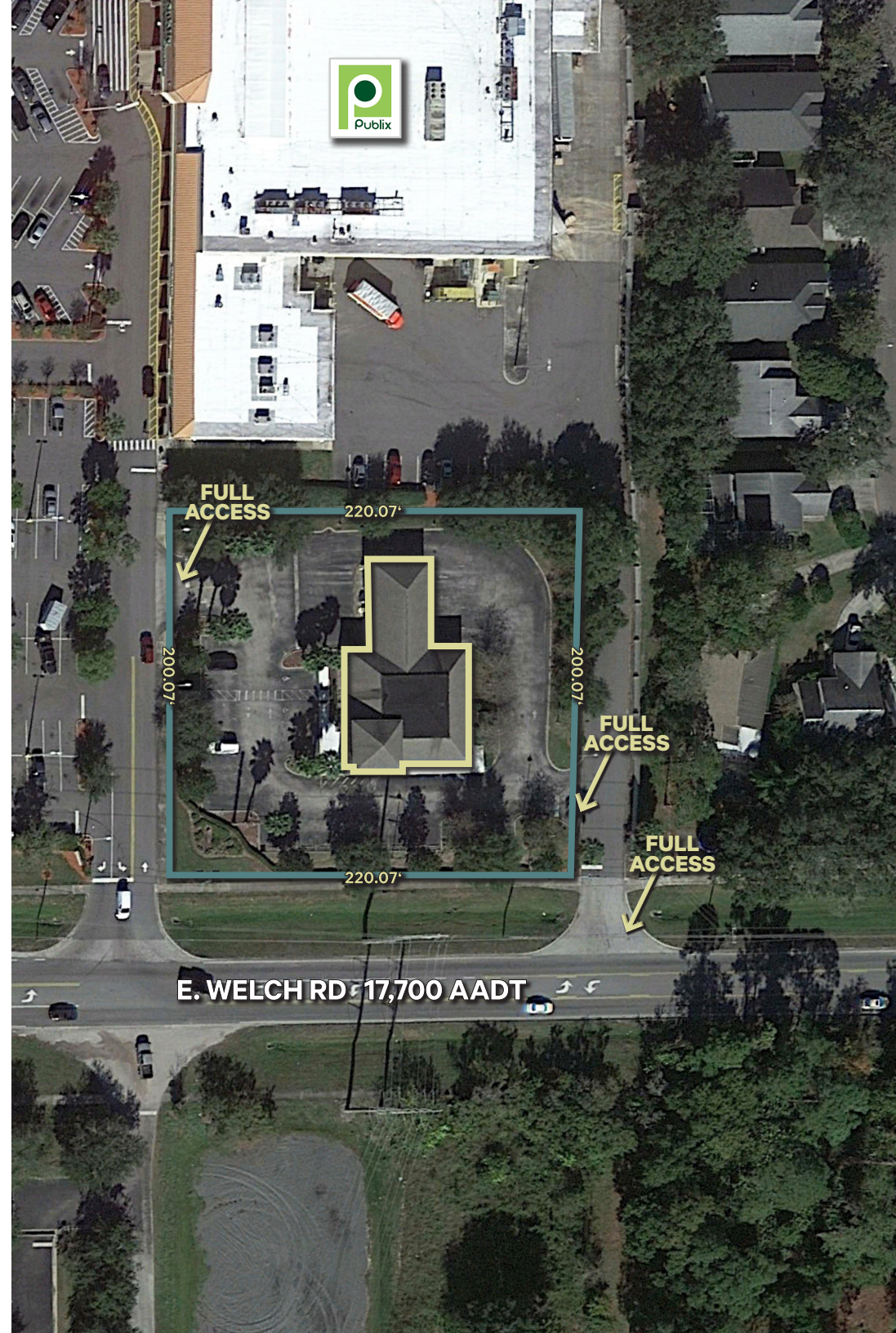
Average Household Income



**21,243**

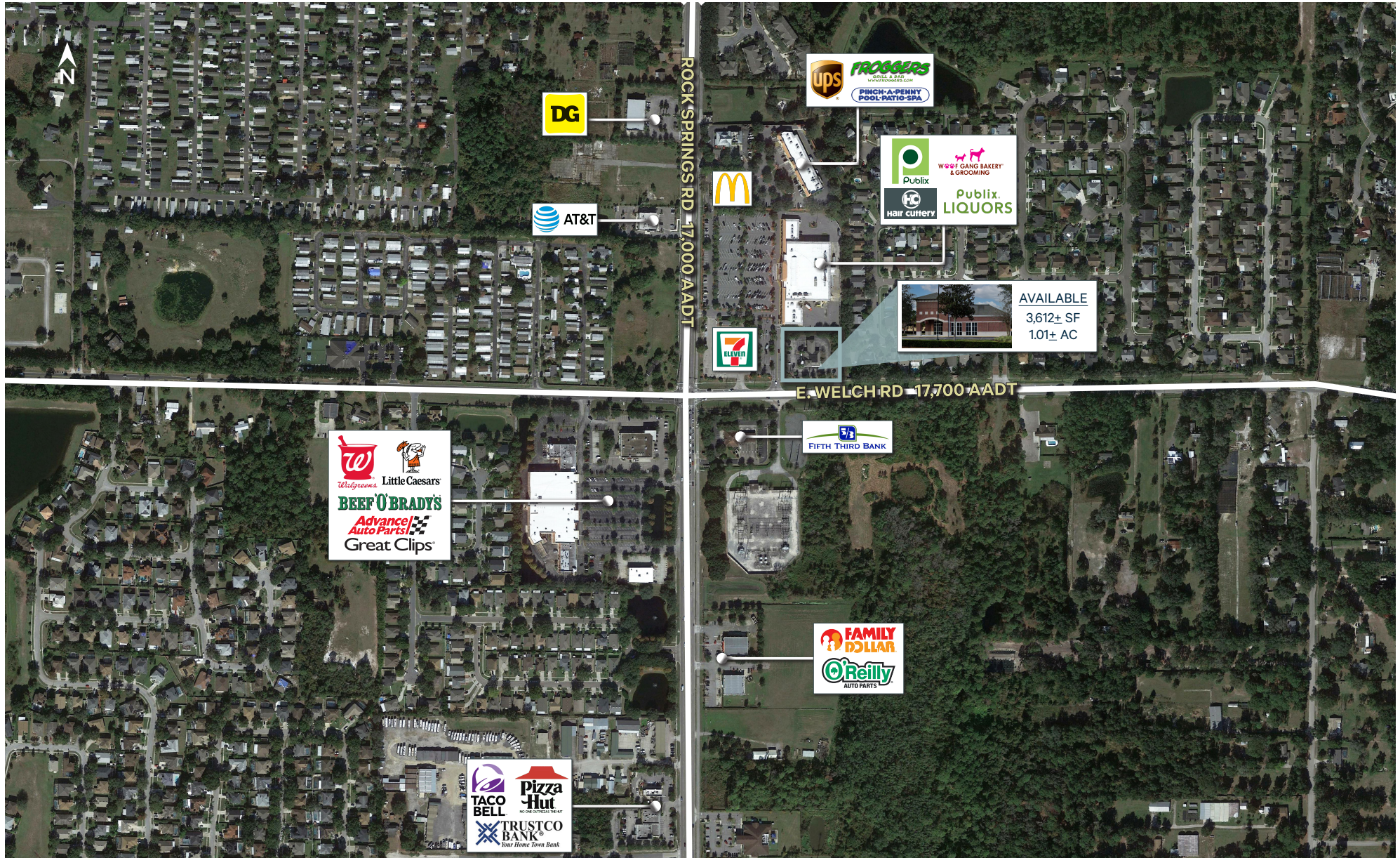
Population

5 Minute Drive Time





# Aerial | Trade Area

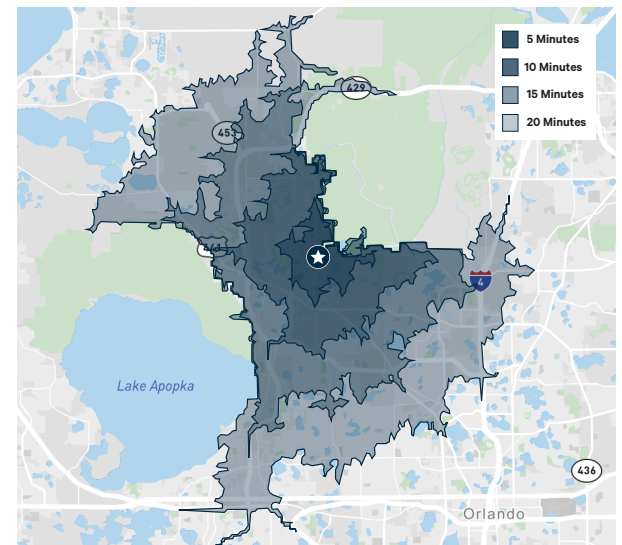
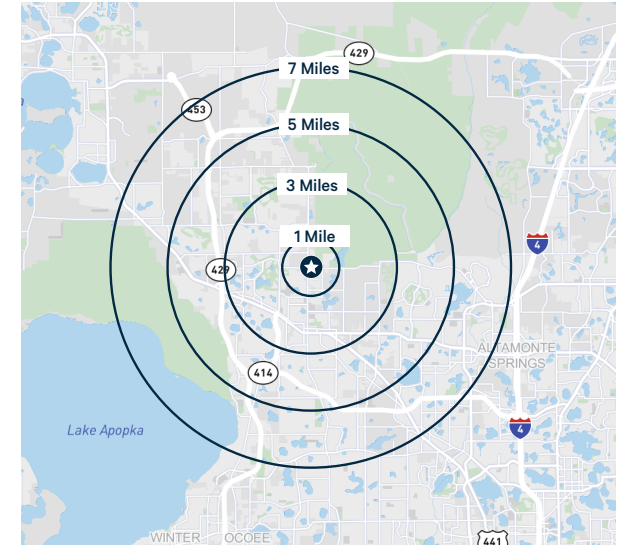




# 2022 Estimated Demographics

Radius Ring	1 Mile	3 Miles	5 Miles	7 Miles
Population	8,601	54,077	115,299	190,446
Median Age	37.5	38.7	40.1	39.8
Daytime Population	6,623	43,401	92,637	154,879
Businesses	207	1,667	3,258	6,073
Households	2,800	18,171	40,280	68,844
Average Household Income	\$93,568	\$101,845	\$104,000	\$101,868
Median Household Income	\$82,139	\$78,052	\$77,052	\$75,666

Drive Time	5 Minutes	10 Minutes	15 Minutes	20 Minutes
Population	21,243	82,739	170,775	366,611
Median Age	38.3	39.3	39.9	38.4
Daytime Population	16,774	65,111	142,960	346,727
Businesses	518	2,312	5,903	15,280
Households	6,839	28,343	61,212	134,584
Average Household Income	\$99,225	\$104,881	\$102,114	\$94,293
Median Household Income	\$93,052	\$90,134	\$86,553	\$80,535







# For information please contact:

---

**Cabot L. Jaffee III**

First Vice President

+1 407 404 5051

[cabot.jaffee@cbre.com](mailto:cabot.jaffee@cbre.com)

**James Mitchell**

Executive Vice President

+1 407 404 5024

[james.mitchell@cbre.com](mailto:james.mitchell@cbre.com)

© 2023 CBRE, Inc. All rights reserved. This information has been obtained from sources believed reliable but has not been verified for accuracy or completeness. CBRE, Inc. makes no guarantee, representation or warranty and accepts no responsibility or liability as to the accuracy, completeness, or reliability of the information contained herein. You should conduct a careful, independent investigation of the property and verify all information. Any reliance on this information is solely at your own risk. CBRE and the CBRE logo are service marks of CBRE, Inc. All other marks displayed on this document are the property of their respective owners, and the use of such marks does not imply any affiliation with or endorsement of CBRE.