

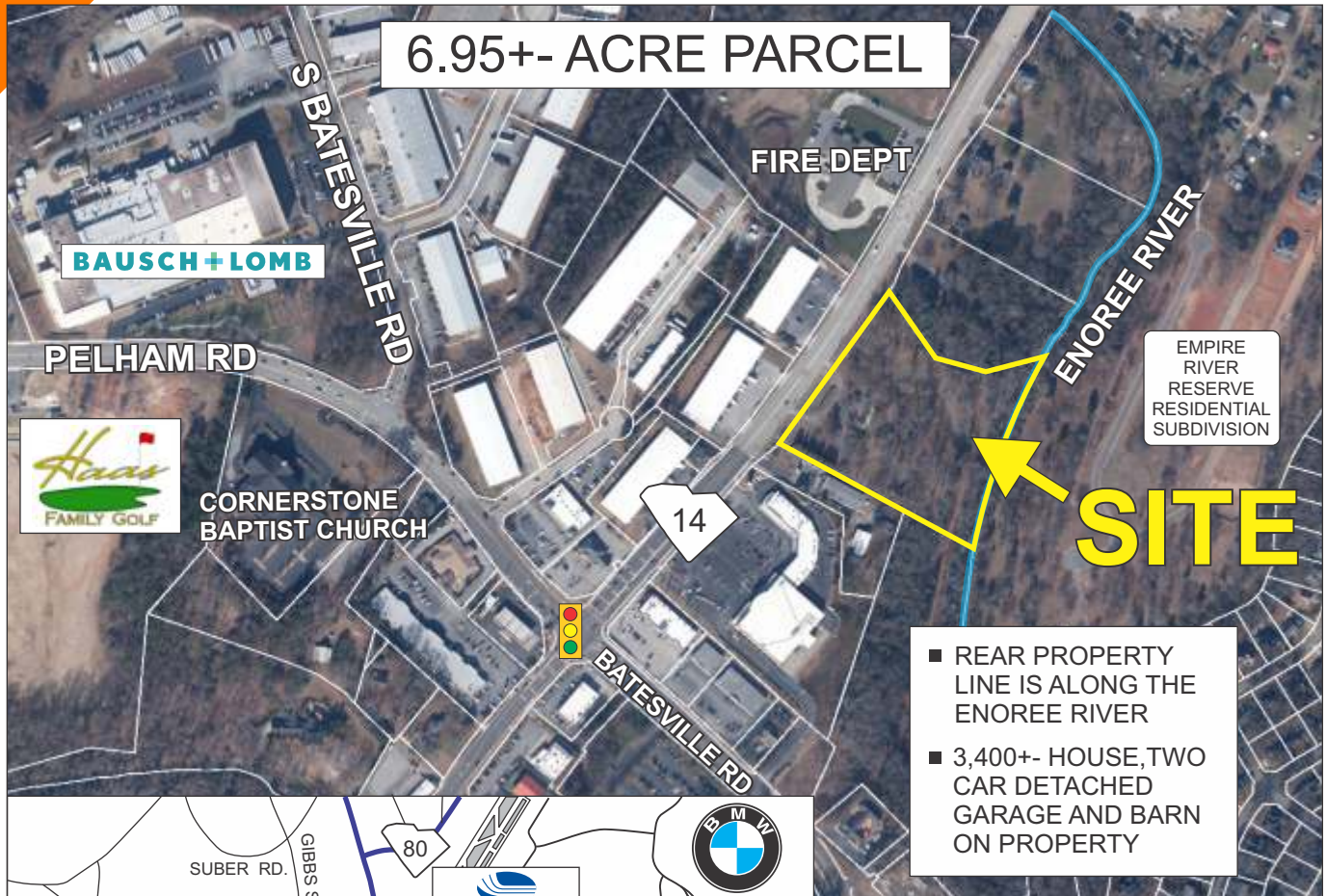
# LANGSTON BLACK

REAL ESTATE, INC.

## LAND FOR SALE

### 3085 SOUTH HWY 14, GREER

#### 6.95+- ACRE PARCEL



- REAR PROPERTY LINE IS ALONG THE ENOREE RIVER
- 3,400+- HOUSE, TWO CAR DETACHED GARAGE AND BARN ON PROPERTY



**SALES PRICE: ~~\$1,700,000~~**  
**REDUCED TO \$1,500,000**

FOR MORE INFORMATION CONTACT  
CHUCK LANGSTON AT 864-230-4302  
clangston@langston-black.com

### LANGSTON BLACK

REAL ESTATE, INC.

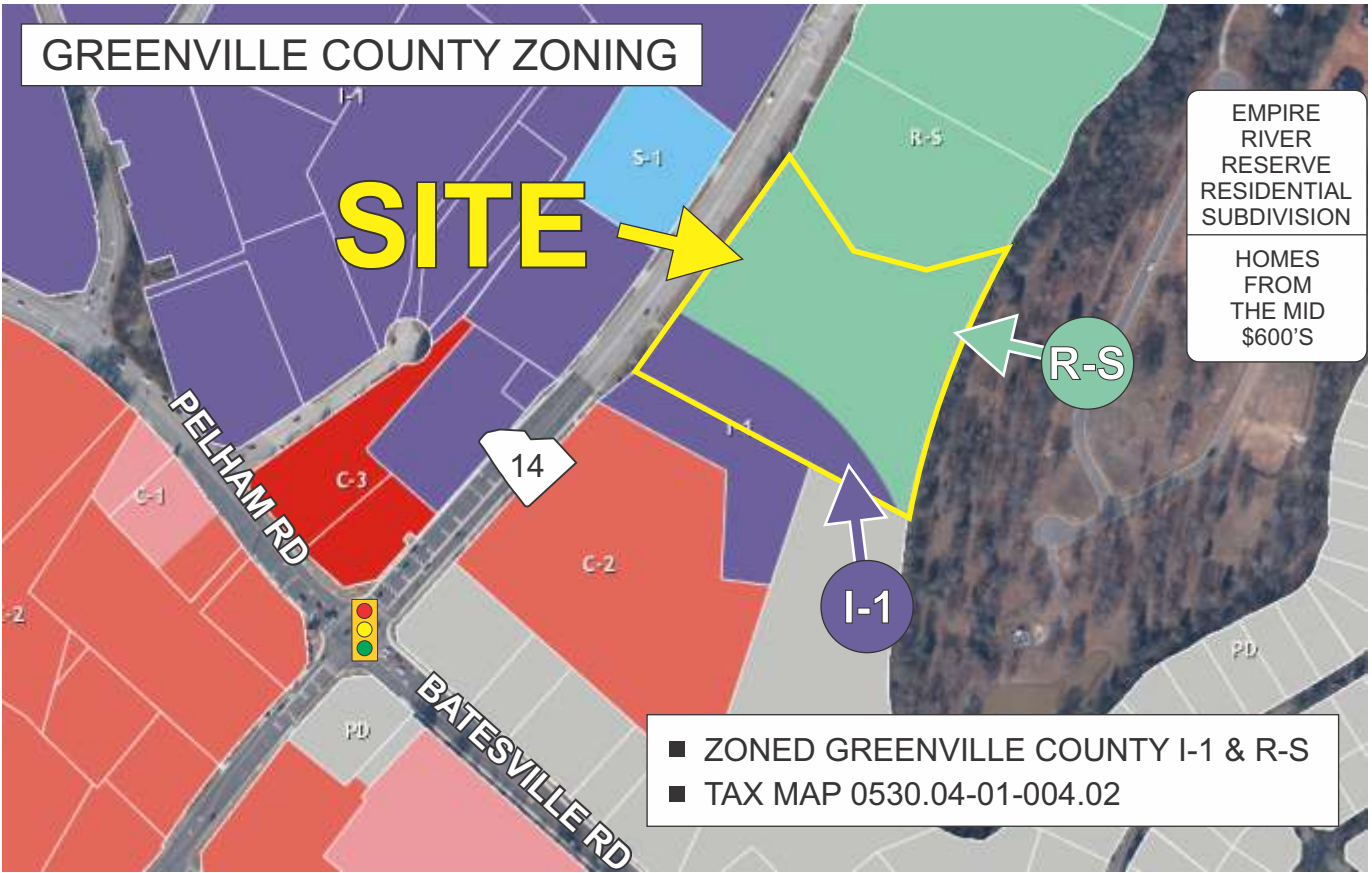
P.O. BOX 2167  
GREER, S.C. 29652  
BUS: 864-848-9070

023

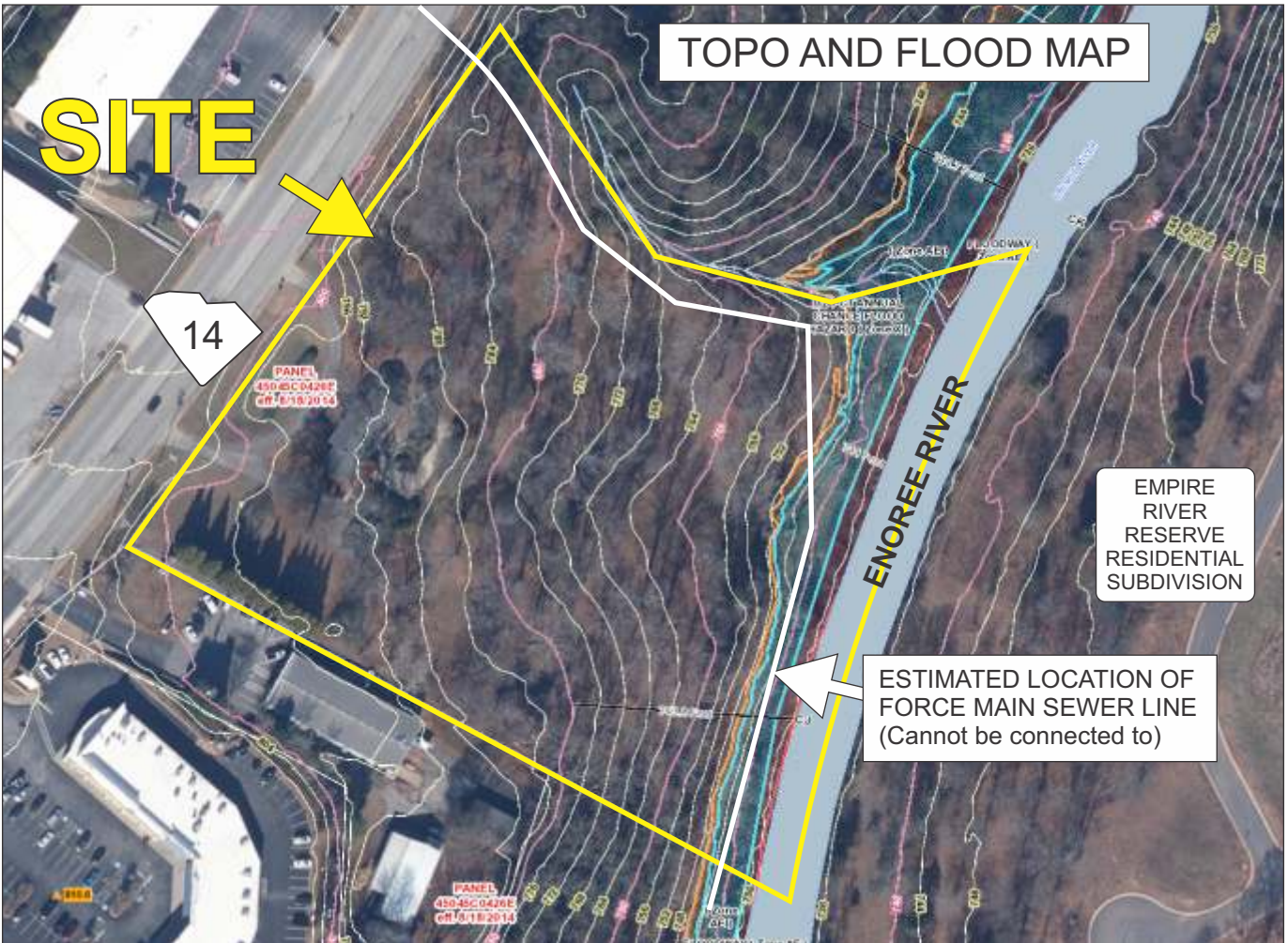
[www.langston-black.com](http://www.langston-black.com)

Every effort has been made to ensure the accuracy of the enclosed data, but we assume no responsibility for errors. All conditions and pricing subject to change without notice.  
(LANGSTON-BLACK SITE #023)

# GREENVILLE COUNTY ZONING



# TOPO AND FLOOD MAP





EXIT  
56

85

GSP AIRPORT  
ROGER MILLIKEN FIELD

CITIGO

OLD HWY 14

14

EAST PHILLIPS RD

Spartanburg Regional  
HOSPITAL

BANK

Pelham  
Medical Center

Gibbs Cancer Center  
& Research Institute

DOLLAR  
GENERAL

MEDICAL  
OFFICES

BATESVILLE RD

PELHAM  
MILL PARK

SHERWIN  
WILLIAMS

FIRE  
STATION

EMPIRE RIVER  
RESERVE  
RESIDENTIAL  
SUBDIVISION

14

BAUSCH+LOMB

PELHAM RD

Haas  
FAMILY GOLF

SPINX

← SITE

