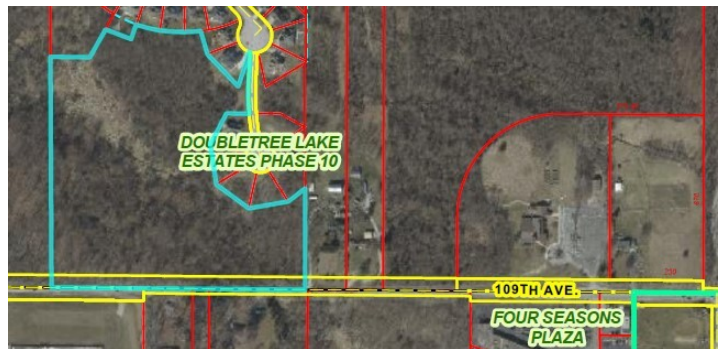


10 ACRE WOODED ESTATE PRIVATE PARCEL OF LAND LOCATED AT APPROX. 8610 E. 109TH AVE WINFIELD IN \$500,000



Property Features:

- **10 Wooded Beautiful Acres to build your Prestine Estate Home Upon.**
- **1000 ft of Road Frontage on 109th Ave.**
- **Winfield/Crown Point School System**
- **Nearby Major Shopping, Dining, Parks,**
- **Golf Courses, and more.**
- **All Permits must go through Town of Winfield.**
- **MLS # 827416**



Nancy Frigo

Broker

219.746.4334

nancyfrigo@gmail.com

NFT
NANCY FRIGO TEAM

COLDWELL BANKER
COMMERCIAL
REALTY

NancyFrigoTeam.com

©2025 Coldwell Banker. All Rights Reserved. Coldwell Banker and the Coldwell Banker logo are trademarks of Coldwell Banker Real Estate LLC. The Coldwell Banker® System is comprised of company owned offices which are owned by a subsidiary of Anywhere Advisors LLC and franchised offices which are independently owned and operated. The Coldwell Banker System fully supports the principles of the Fair Housing Act and the Equal Opportunity Act. The property information herein is derived from various sources that may include, but not be limited to, county records and the Multiple Listing Service, and it may include approximations. Although the information is believed to be accurate, it is not warranted and you should not rely upon it without personal verification. Affiliated real estate agents are independent contractor sales associates, not employees.