

# HILLSBOROUGH Office For Lease

**\$835/MONTH PLUS \$55 UTILITIES**



 1000 CORPORATE DRIVE, SUITE 313, HILLSBOROUGH



Quality office space in a professional setting.  
Convenient location just off of I-85.

- Close proximity to Orange County Sportsplex and Oconneechee Speedway walking trail at the Eno River and Downtown Hillsborough
- Spacious parking.

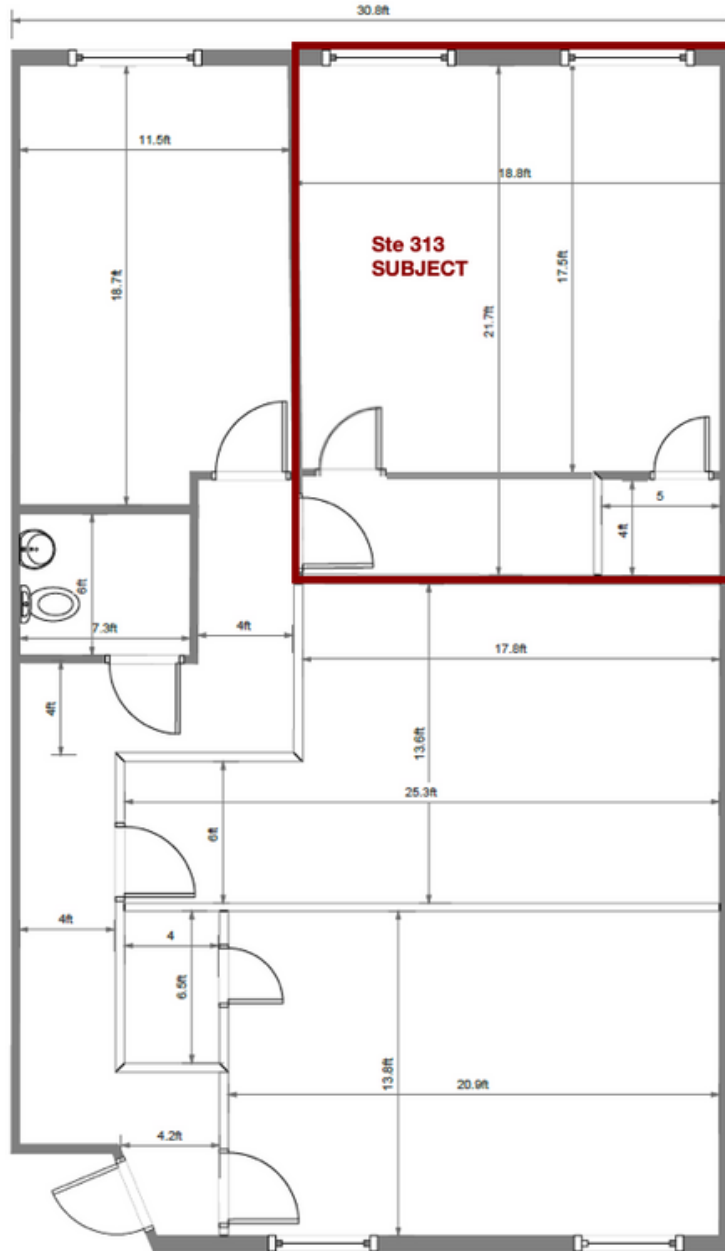
**Emilee Collins, CCIM**  
(919) 730-7040  
emilee@pickettsprouse.com

# Property Details

Monthly Lease Rate	\$835 + \$55 Utilities
Square Footage	501± (includes common area)
Zoning	High Intensity Commercial
Parcel Number	9874616773



# Floor Plan



\*Square footage is approximate and not drawn to scale.