

1184 HARRISON STREET

FOR LEASE | COMMERCIAL BUILDING IN HEART OF SOMA

TCP
TOUCHSTONE
COMMERCIAL PARTNERS



WWW.TCPRE.COM

ZACH HAUPERT zhaupert@tcpre.com
D 415.539.1121 | C 415.812.1219

MICHAEL SANBERG msanberg@tcpre.com
D 415.539.1103 | C 415.697.6088

TREVOR GUDIM trevor@tcpre.com
D 415.539.1122 | C 858.922.2632

1184 HARRISON STREET

PROPERTY SUMMARY | 1184 HARRISON ST

ADDRESS

1184 Harrison Street, San Francisco, CA 94103

AVAILABLE SPACE

+/- 5,000 Square Feet

RENTAL RATE

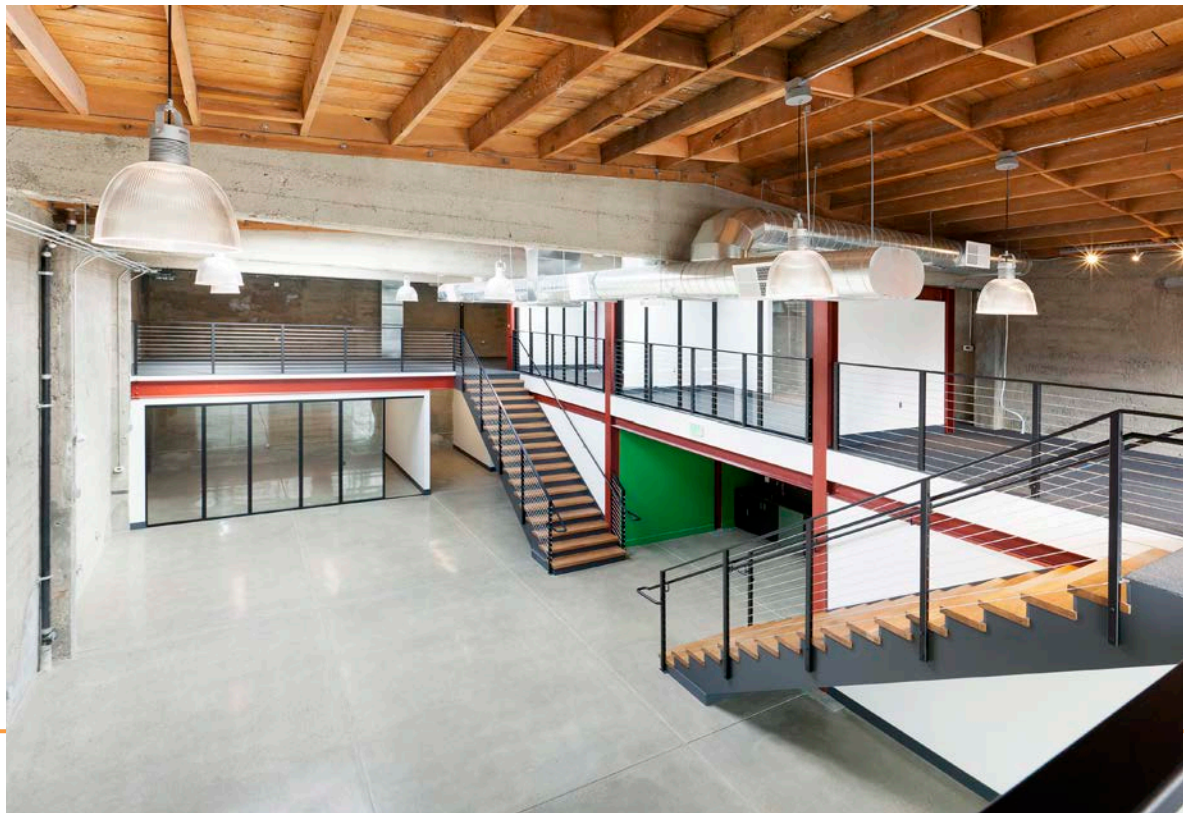
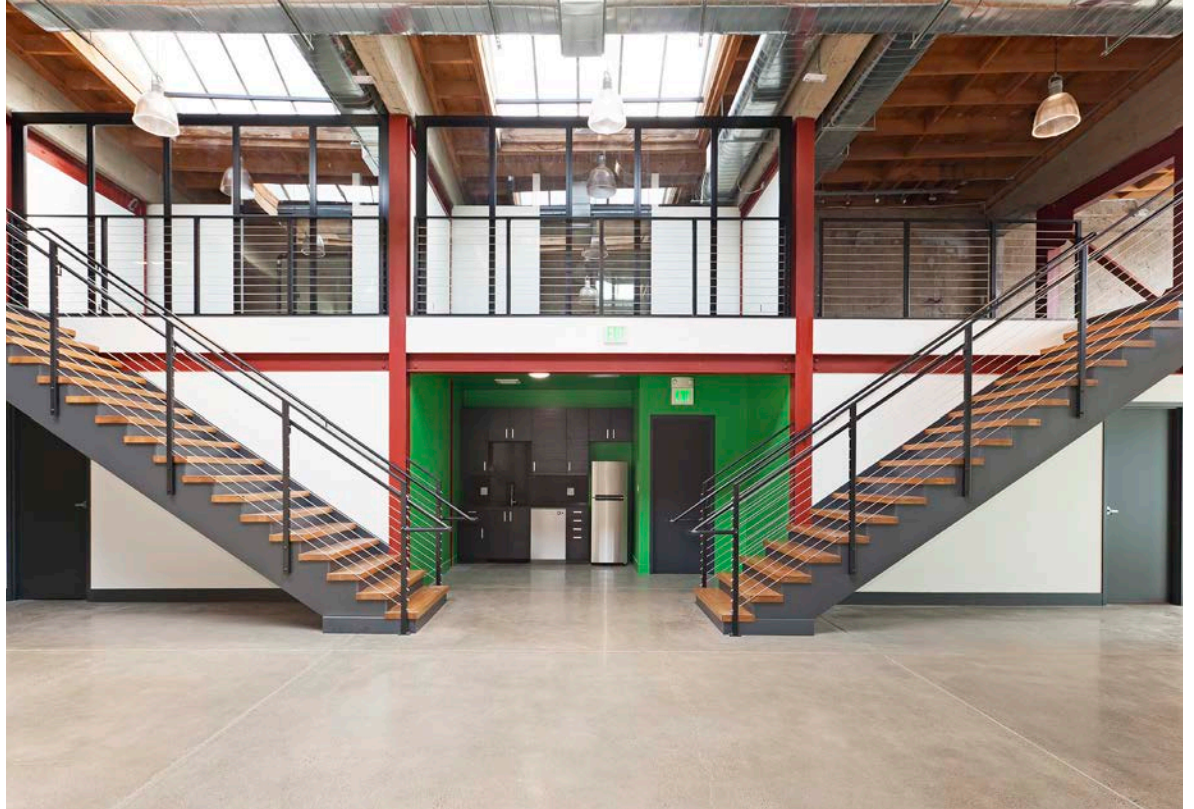
Negotiable

AVAILABLE

Immediately

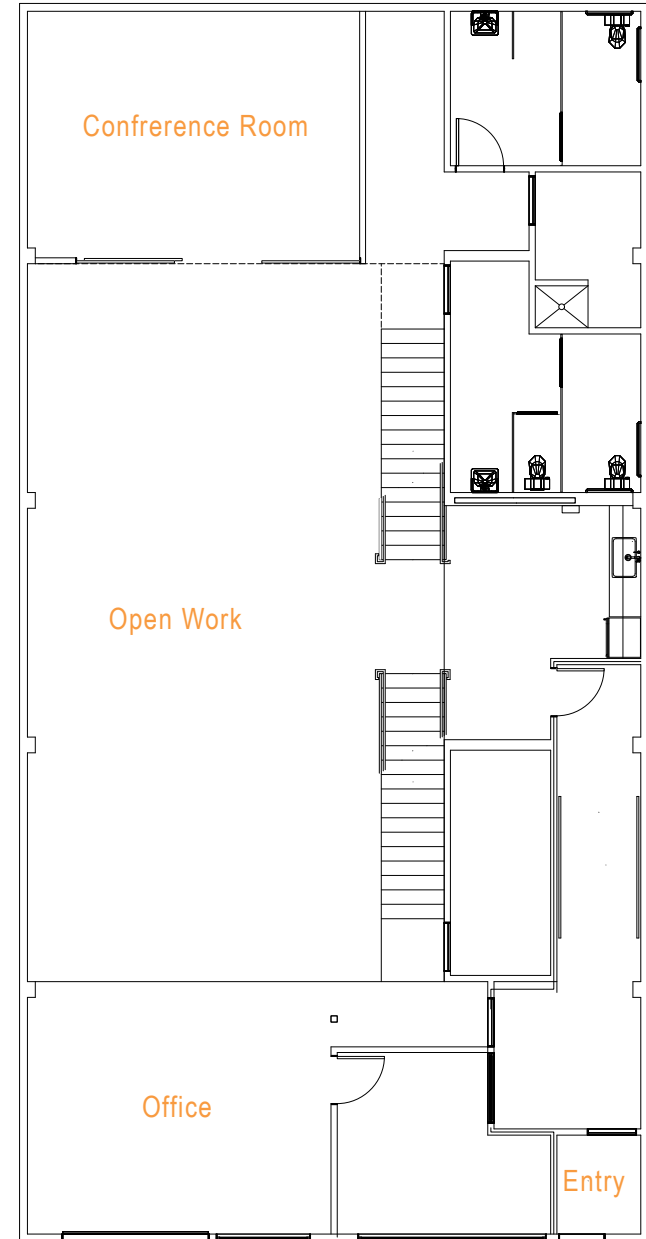
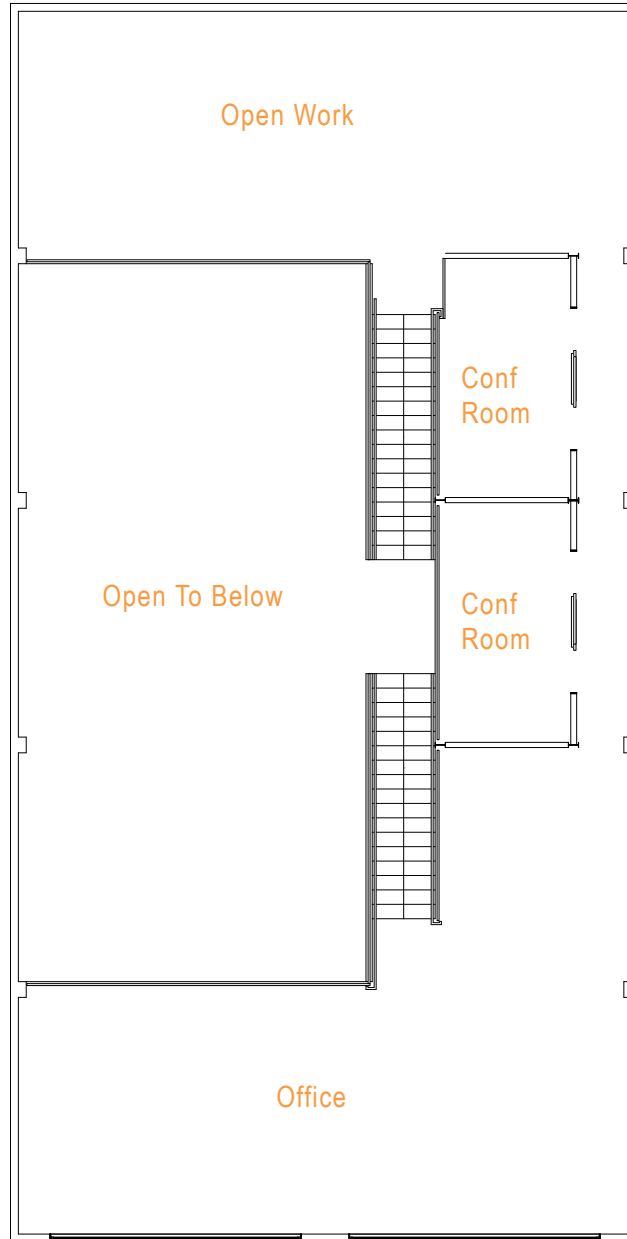
BUILDING ATTRIBUTES

- + Centrally Located Creative Flex Space
- + Four (4) Conference / Offices
- + ADA Restrooms
- + Kitchenette
- + 20' Ceilings
- + Full HVAC Throughout



1184 HARRISON STREET

+/- 5,000 Square Feet



1184 HARRISON STREET

LOCATION OVERVIEW

Desirable South Park location, walkable to Market St. amenities and to surrounding neighborhoods.



05 MIN to 3rd St. Caltrain
13 MIN to Civic Center Bart
15 MIN to Caltrain Station



07 MIN to SOMA
10 MIN to Union Square
15 MIN to Financial District



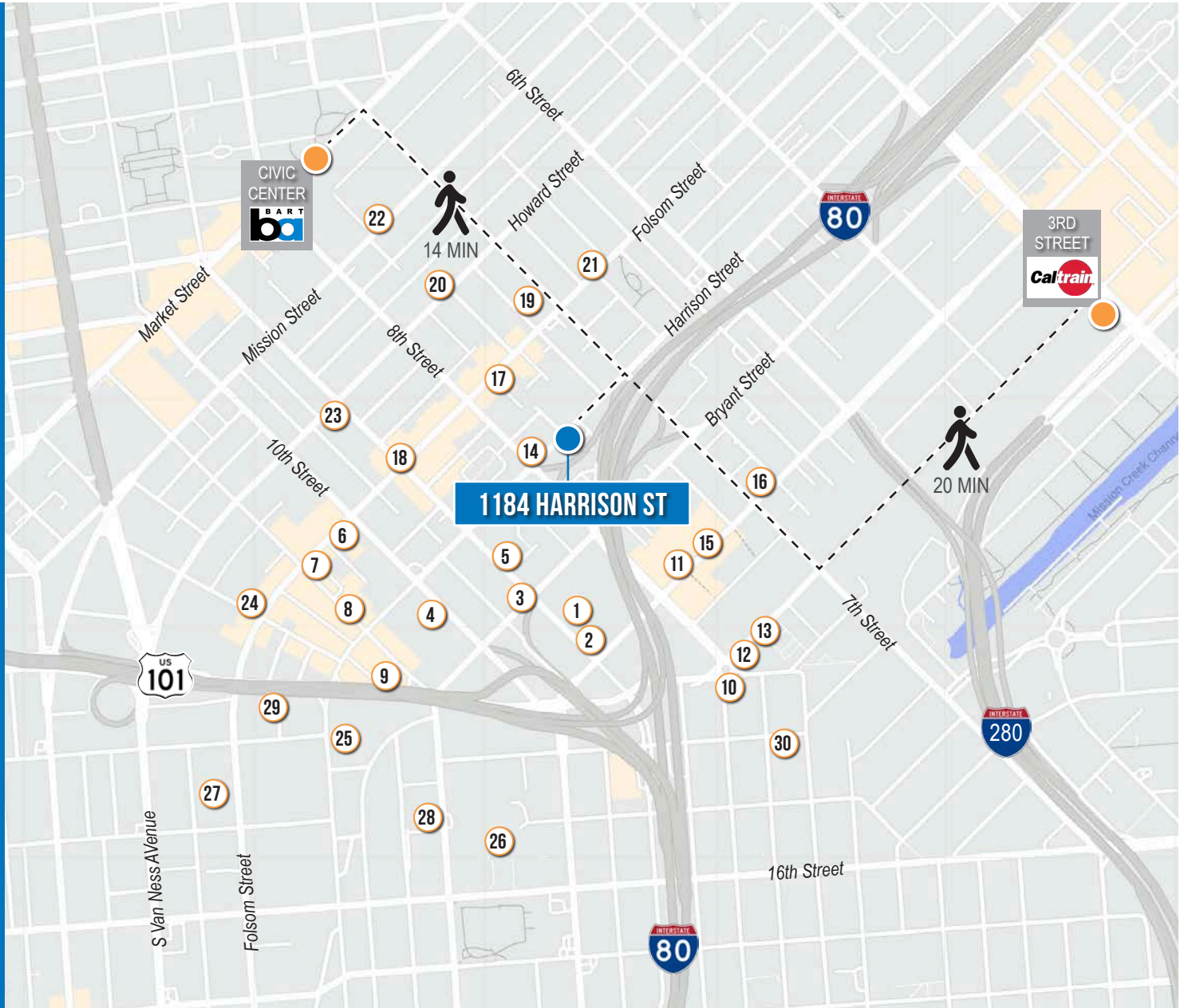
05 MIN to 80 On-Ramp
05 MIN to 101 On-Ramp
08 MIN to 280 On-Ramp



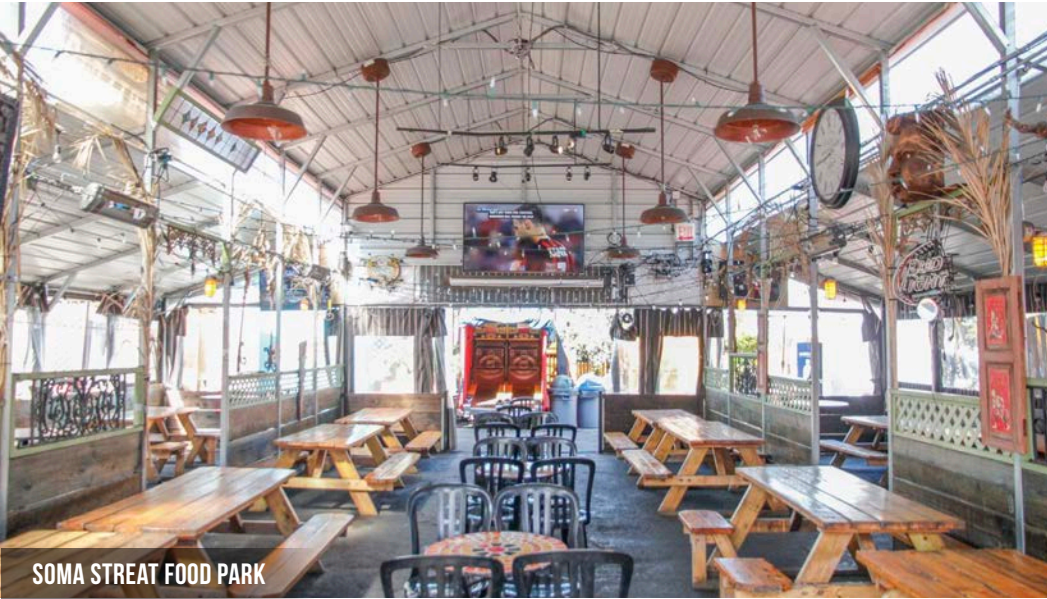
1184 HARRISON STREET

NEARBY AMENITIES

- 1..... Trader Joe's
- 2..... Peet's Coffee
- 3..... L'acajou Bakery and Cafe
- 4..... Costco Wholesale
- 5..... Cups and Cakes Bakery
- 6..... Sextant Coffee Roasters
- 7..... Basil Canteen
- 8..... DNA Pizza
- 9..... SoMa StrEat Food Park
- 10..... The Grove - Design District
- 11..... Bellota
- 12..... Starbucks
- 13..... Okane
- 14..... AK Subs
- 15..... REI
- 16..... Mars Bar & Restaurant
- 17..... Basil
- 18..... Azúcar Lounge
- 19..... Sightglass Coffee
- 20..... Cellarmaker Brewing Co.
- 21..... Deli Board
- 22..... City Beer Store
- 23..... Chantal Guillon Patisserie
- 24..... The Willows
- 25..... Best Buy
- 26..... Safeway
- 27..... Foods Co.
- 28... Sports Basement Bryant Street
- 29..... Rainbow Grocery
- 30..... Skool



1184 HARRISON STREET



1184 HARRISON STREET



ZACH HAUPERT

D 415.539.1121 C 415.812.1219
zhaupert@tcpre.com DRE # 01822907

MICHAEL SANBERG

D 415.539.1103 C 415.697.6088
msanberg@tcpre.com DRE # 01930041

TREVOR GUDIM

D 415.539.1122 C 858.922.2632
trevor@tcpre.com DRE # 01979980

Corp. Lic. 01112906
www.tcpre.com

This document has been prepared by Touchstone Commercial Partners for advertising and general information only. Touchstone Commercial Partners makes no guarantees, representations or warranties of any kind, expressed or implied, regarding the information including, but not limited to, warranties of content, accuracy and reliability. Any interested party should undertake their own inquiries as to the accuracy of the information. Touchstone Commercial Partners excludes unequivocally all inferred or implied terms, conditions and warranties arising out of this document and excludes all liability for loss and damages arising there from. This publication is the copyrighted property of Touchstone Commercial Partners and/or its licensor(s). ©2023. All rights reserved.