

**AVISON
YOUNG**

For Lease

201 Wilton Ave, Middlesex, NJ



±18,500 sf

Class A IOS/ISF on 3.1 acres

Available immediately

[Website](#)

For more information

Timothy J. Cadigan
Principal
D +1 973 753 1104 | C +1 732 320 5210
timothy.cadigan@avisonyoung.com

Stephen Gianis
Vice President
D +1 973 753 1076 | C +1 908 447 6022
stephen.gianis@avisonyoung.com

Matthew C. Turse, CCIM
Principal
D +1 973 898 6370 | C +1 973 670 3247
matthew.turse@avisonyoung.com

John Gianis
Vice President
D +1 973 753 1064 | C +1 908 868 0104
john.gianis@avisonyoung.com





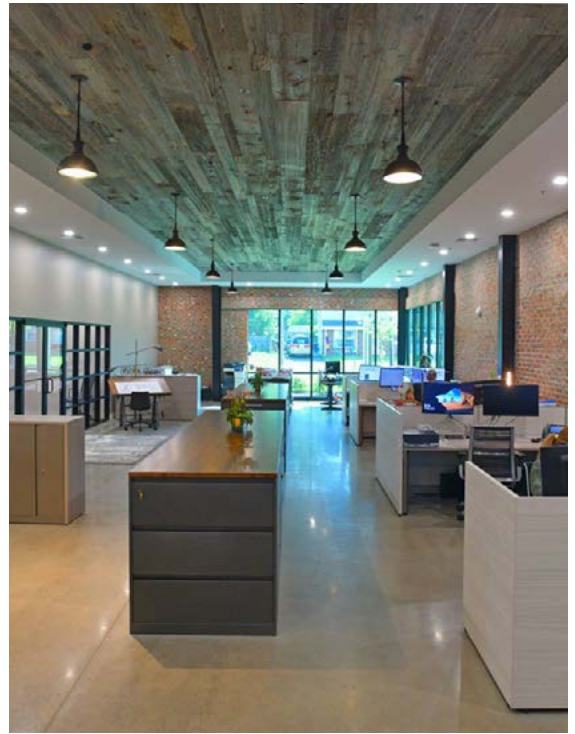
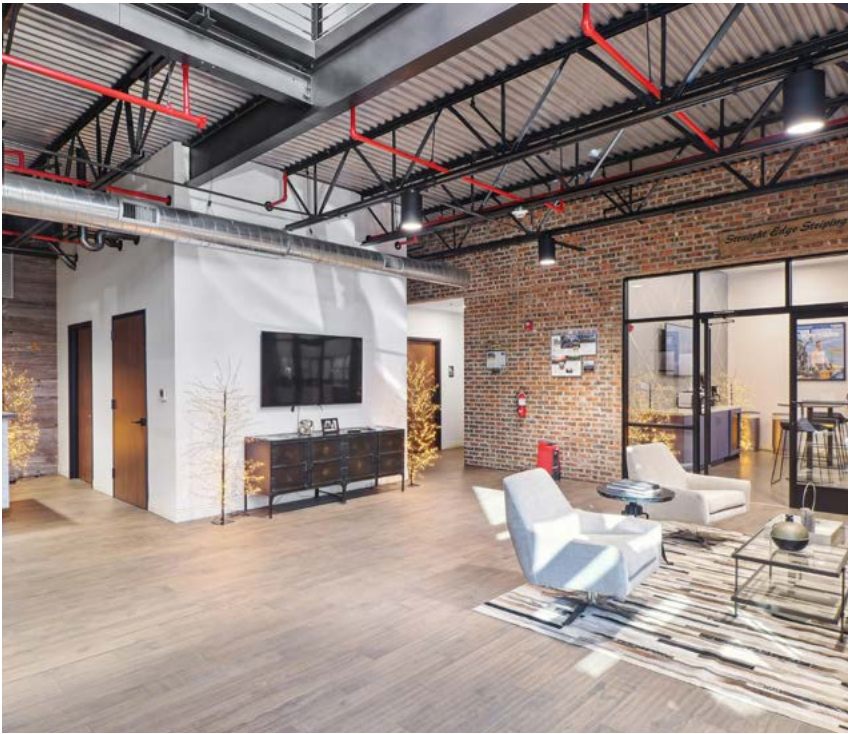
Property overview

Building size	± 18,500 sf
Total office	± 9,370 sf First floor: ± 7,531 sf Second floor: ± 1,838 sf
Area	± 3.1 acres
Clear height	± 28'
Loading	7 drive in doors (12' x 14')
Parking	70 car spaces
Column spacing	Clear span
Year built	2019
Electrical	600 Amp 208v
Sprinklers	ESFR
Taxes (2024)	\$76,371
Zoning	Industrial

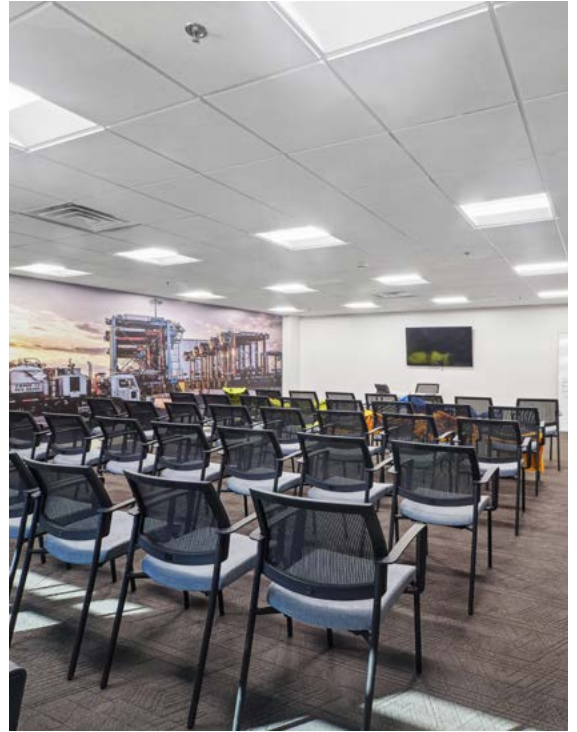
Additional features

- Class A Industrial Outdoor Storage building
- 3.1 acre yard area: paved, lit, fenced, and secured
- Easy access to I-287, Routes 18 & 22, US Highway 1 and NJ Turnpike (Exit 10)
- All grade level loading - 7 doors (12'x14')
- Covered outdoor storage area
- Available immediately

Gallery



Gallery

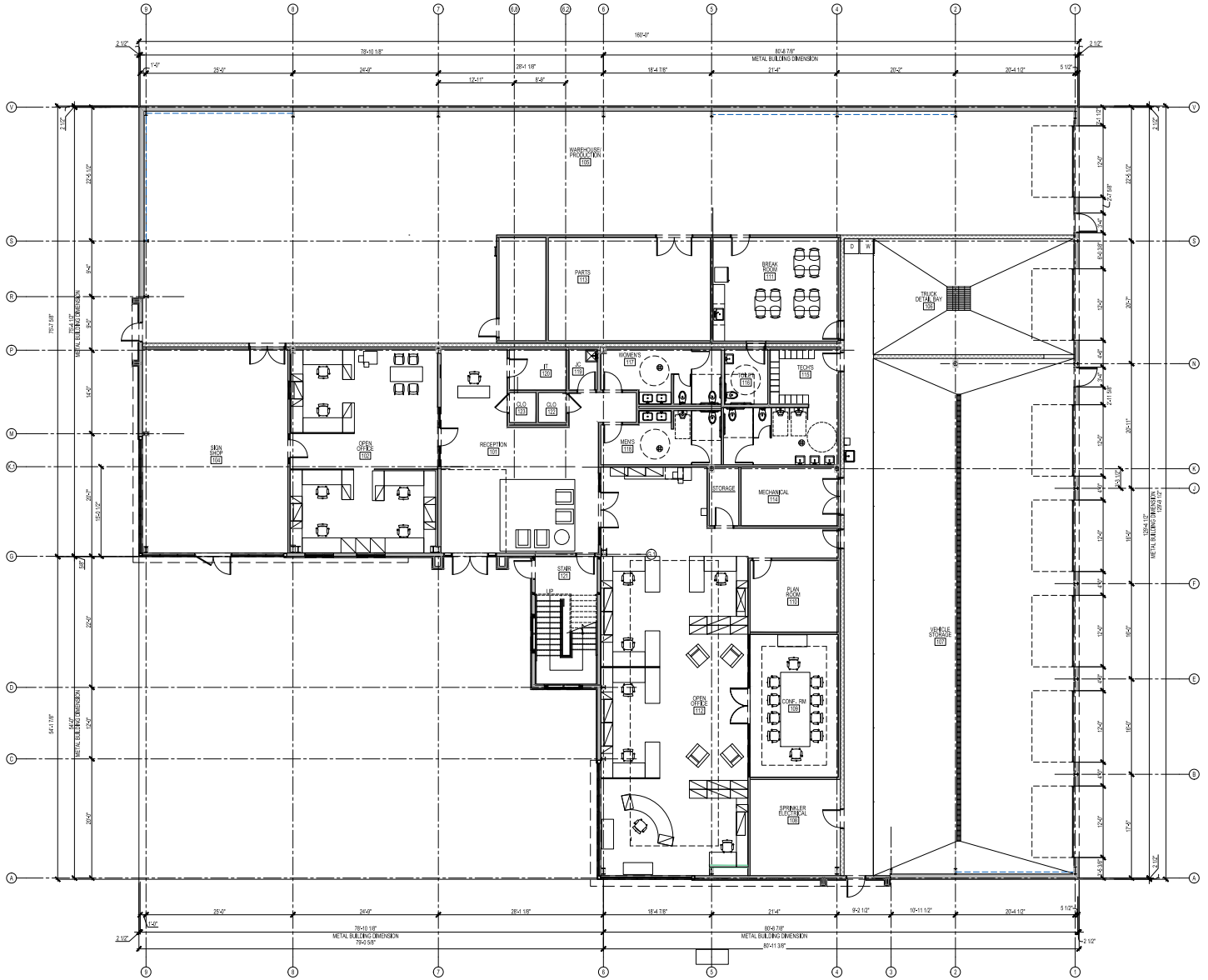


Gallery



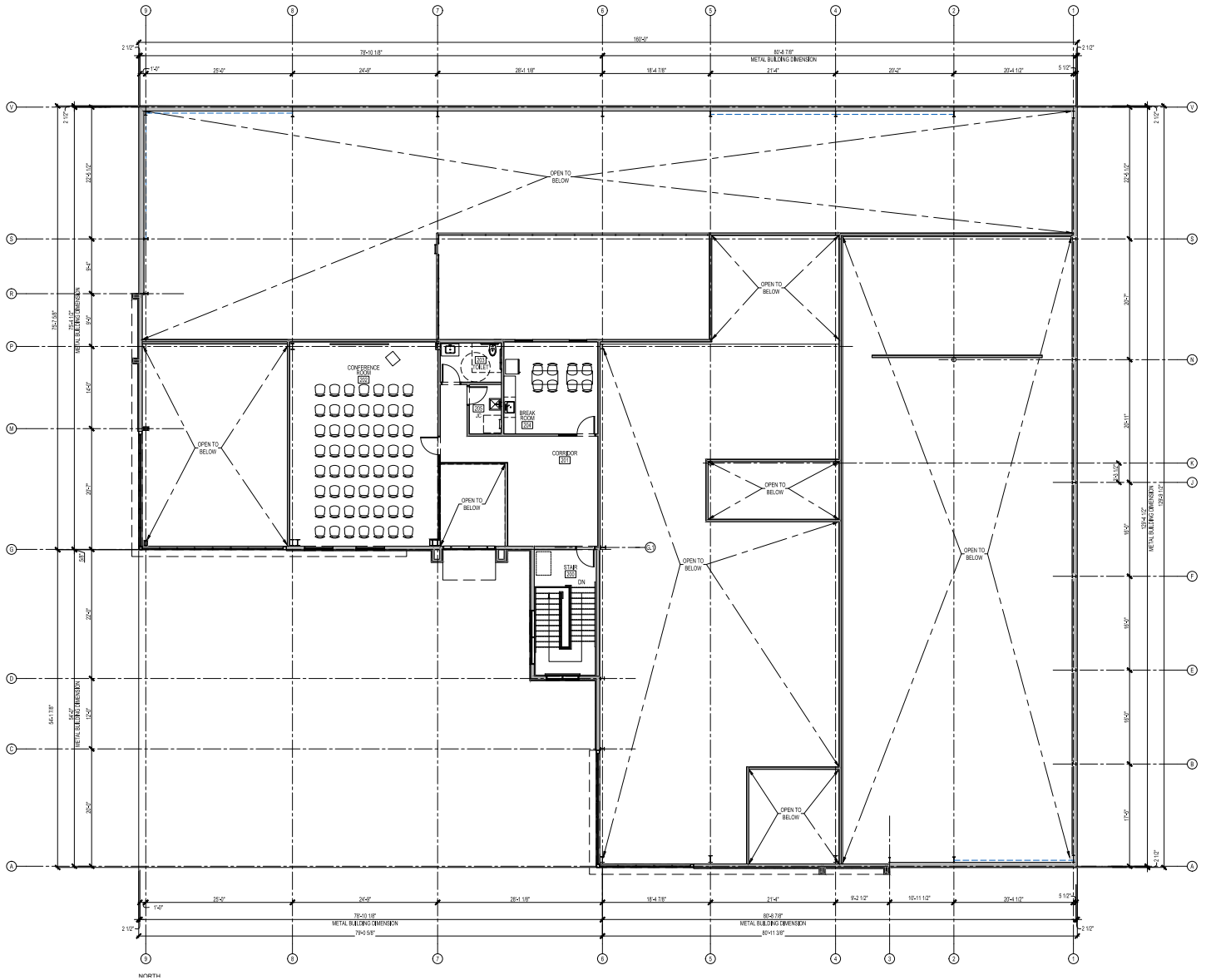
Floor plan

First floor



Floor plan

Second floor



Location maps

