

CURTIS BUSINESS PLAZA

1070 N CURTIS ROAD | BOISE, IDAHO

Across from St. Alphonsus Regional Medical Center!



SUITE 145

582 NRSF MEDICAL OR PROFESSIONAL OFFICE SPACE

SUITE 210

1,935 NRSF MEDICAL OR PROFESSIONAL OFFICE SPACE

SUITE 220

1,920 NRSF MEDICAL OR PROFESSIONAL OFFICE SPACE

Building owned and managed by
HEALTHCARE REALTY

**ARTHUR BERRY
& COMPANY**

250 W Bobwhite Ct Suite 230
Boise, Idaho 83706

208-336-8000

www.arthurberry.com



SUITES 145, 210 and 220

1070 N CURTIS RD | BOISE, IDAHO

AVAILABLE: 592 NRSF Medical/Professional Office (Suite 145)
 1,935 NRSF Medical/Professional Office (Suite 210)*
 1,920 NRSF Medical/Professional Office (Suite 220)*

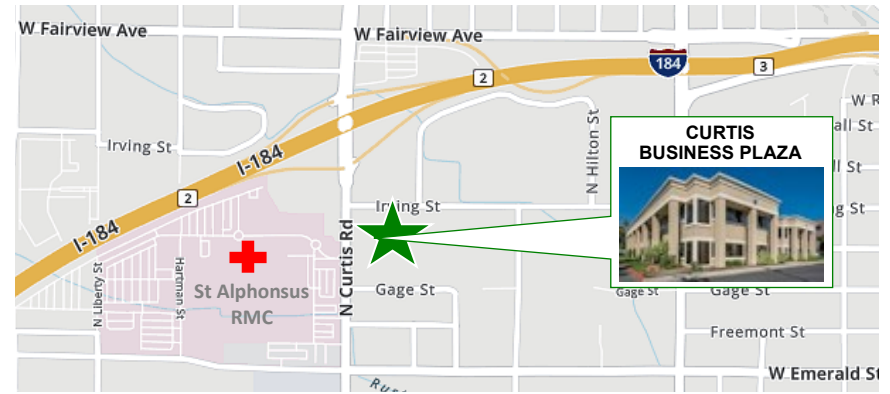
LEASE RATE: Contact Agent
NNN CHARGES: Contact Agent
TI ALLOWANCE: Negotiable

*Suites 210 and 220 may be combined

ARTHUR BERRY & COMPANY



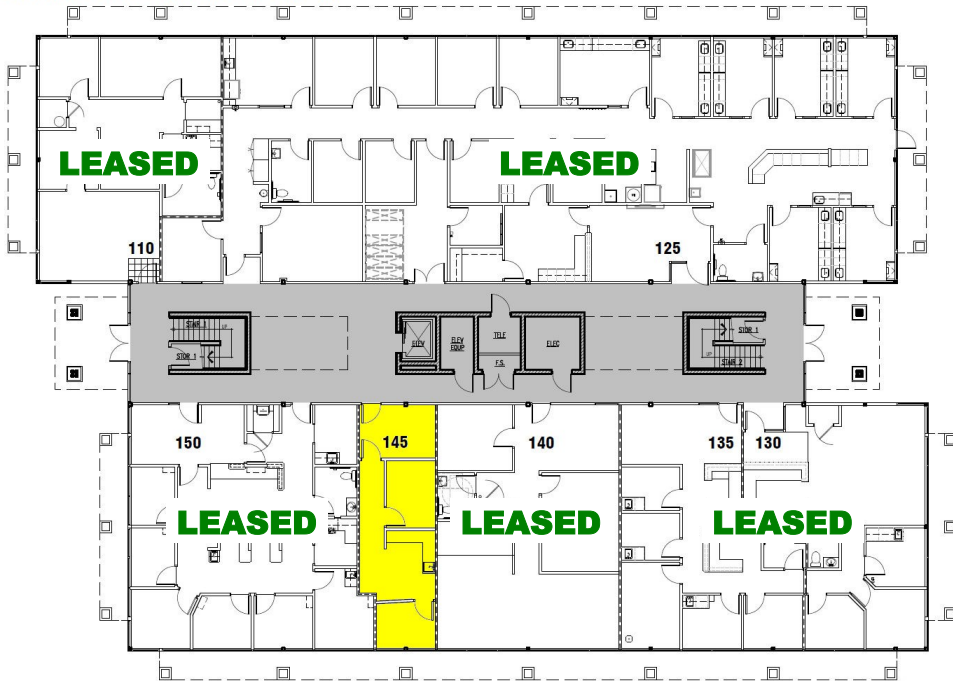
250 W Bobwhite Ct Suite 230
 Boise, Idaho 83706
208-336-8000
www.arthurberry.com



- Suite 145 Rarely Available Small Suite
- Suite 210 Corner Office with Lots of Windows
- Suite 220 Medical Space Currently
- Plenty of On-site Parking
- Easy Freeway Access
- Generous Tenant Improvement Allowance for Medical Office Tenant

Building owned and managed by
HEALTHCARE REALTY

CURTIS BUSINESS PLAZA



FIRST FLOOR PLAN

SCALE: 1/16" = 1'-0"

8-27-10



CURTIS BUSINESS PLAZA



SECOND FLOOR PLAN

SCALE: 1/16" = 1'-0"

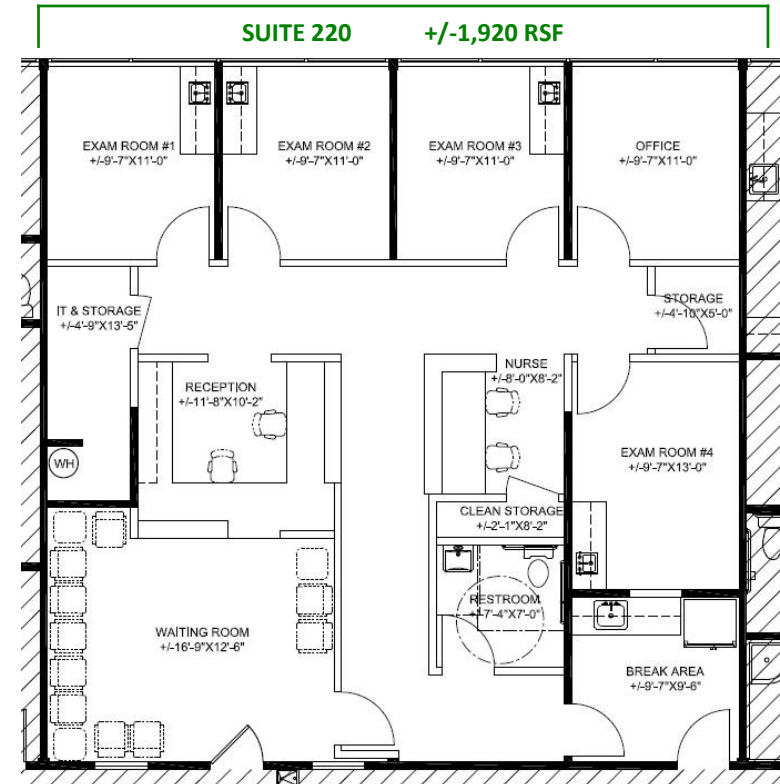
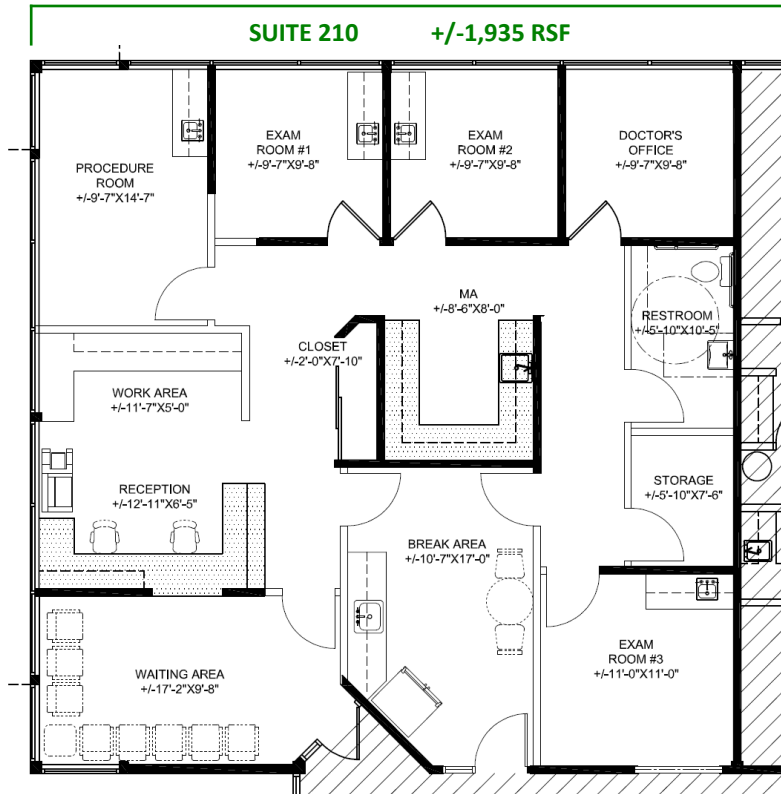
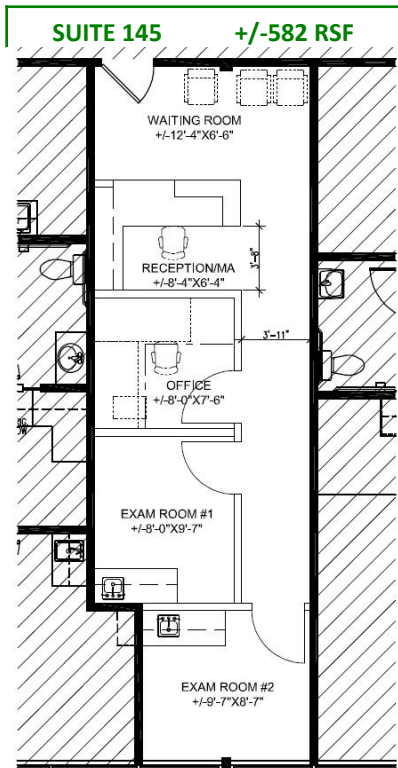
8-27-10



CONCEPTUAL MEDICAL CLINIC FLOOR PLANS

Open to Tenant-suggested Modifications to Conceptual Plan

Contact Agent for Tenant Improvement Allowance for
Conceptual Medical Use Space Plan





 Saint Alphonus

 CURTIS BUSINESS PLAZA

PARKING AREA



**ARTHUR BERRY
& COMPANY**



250 W Bobwhite Ct Suite 230
Boise, Idaho 83706

208-336-8000

www.arthurberry.com



**HEALTHCARE
REALTY**

Building owned and managed by
HEALTHCARE REALTY