

Pad-Ready Lots for Sale

Todd Rice, CCIM

+1 501 850 0702
todd.rice@ar.colliers.com

Brandon Rogers

+1 501 850 0722
brandon.rogers@ar.colliers.com

1 Allied Drive, Suite 1500
Little Rock, AR 72202
P: +1 501 372 6161
F: +1 501 372 0671
colliers.com/arkansas

Northshore Business Park, North Little Rock, AR

Located between Crystal Hill Elementary
and Arkansas Surgical Hospital

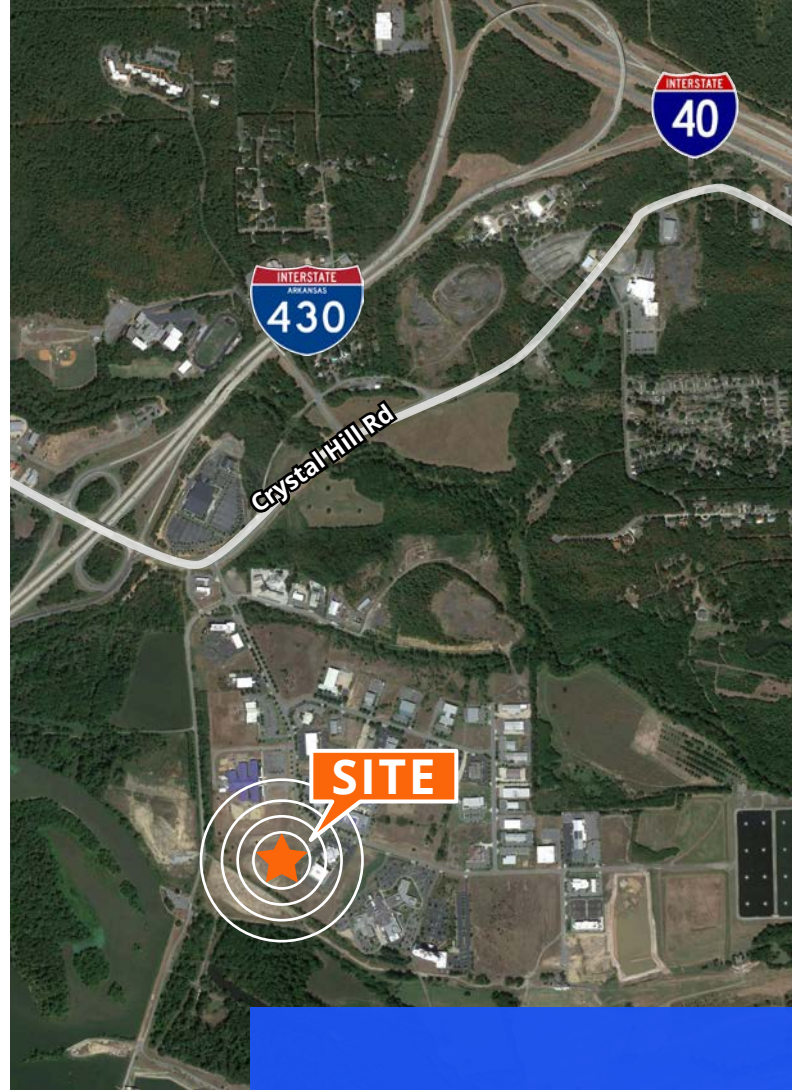
- Lot sizes from 0.9 - 4.05 acres
- Total available: 9.14 acres
- Sale price: \$6.00/SF (see next page for specific pricing)
- Pad ready sites - graded and ready for construction
- All utilities and road improvements in place including fiber
- Close access to I-430, I-40 and the Arkansas River Trail

Copyright © 2025 Colliers International. Information herein has been obtained from sources deemed reliable, however its accuracy cannot be guaranteed. The user is required to conduct their own due diligence and verification.

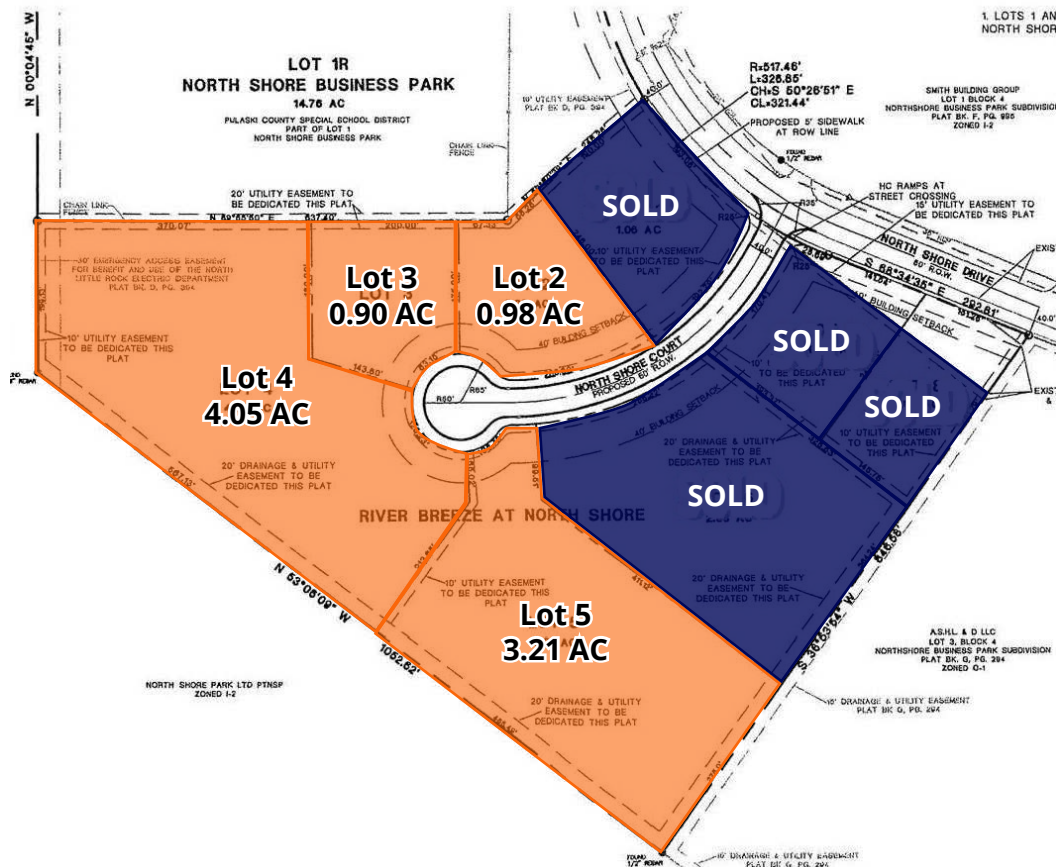
For Sale

Available Lots & Rates

Lot #	Acreage	\$/SF	Total Price
1	1.015	-	SOLD
2	0.98	\$6.00	\$256,132.80
3	0.90	\$6.00	\$235,224.00
4	4.05	\$6.00	\$1,058,508.00
5	3.21	\$6.00	\$838,965.60
6	2.64	-	SOLD
7	0.85	-	SOLD
8	0.87	-	SOLD



Lot Layout



Contact us:

Todd Rice, CCIM

+1 501 850 0702

todd.rice@ar.colliers.com

Brandon Rogers

+1 501 850 0722

brandon.rogers@ar.colliers.com

Colliers | AR

1 Allied Drive, Suite 1500

Little Rock, AR 72202

P: +1 501 372 6161

F: +1 501 372 0671

Northshore Business Park

