

FOR SUBLEASE

3100 AIRWAY AVE, SUITE 142
COSTA MESA | CA 92626

FOR MORE INFORMATION PLEASE CONTACT:

DEVIN RAY
VICE PRESIDENT

P: 949.242.1065
dray@daumcre.com
CADRE #02018130




TURNER WHITE
ASSOCIATE

P: 949.242.1717 | M: 925.550.8422
twhite@daumcommercial.com
CADRE #02249148



±2,552 SF
SQUARE FEET



±1,475
OFFICE SF



20'
CLEAR HEIGHT



One
GL DOOR

Although all information is furnished regarding for sale, rental or financing is from sources deemed reliable, such information has not been verified and no express representation is made nor is any to be implied as to the accuracy thereof, and it is submitted subject to errors, omissions, changes of price, rental or other conditions, prior sale, lease or financing, or withdrawal without notice.



2,552 SF INDUSTRIAL UNIT

2,552 SF
IND UNIT

3100 AIRWAY AVE, SUITE 142
COSTA MESA | CA 92626

FOR SUBLEASE



PROPERTY FEATURES:

- ±2,552 SF Property
- ±1,475 SF 2-Story Office
- ±1,077 SF Warehouse
- Sublease through May 31, 2027
- (1) 12' x 12' Automatic GL Door
- Power: 200 Amps - 120/208v
- 20' Clear Height
- Skylights
- Warehouse Sink
- Spectrum Internet
- ADT Alarm System
- Corner Unit

FOR MORE INFORMATION PLEASE CONTACT:

DEVIN RAY
VICE PRESIDENT



P: 949.242.1065
dray@daumcre.com
CADRE #02018130

TURNER WHITE
ASSOCIATE

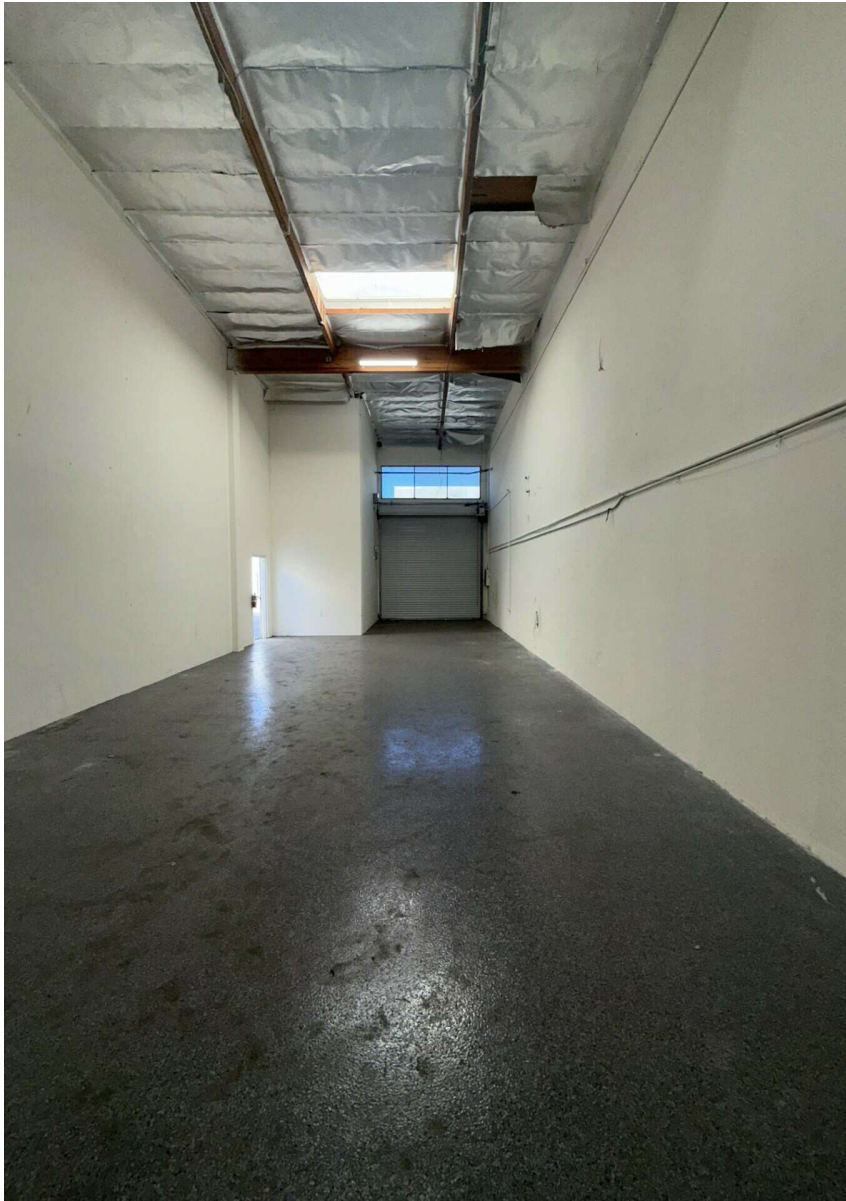
P: 949.242.1717 | M: 925.550.8422
twhite@daumcommercial.com
CADRE #02249148

Although all information is furnished regarding for sale, rental or financing is from sources deemed reliable, such information has not been verified and no express representation is made nor is any to be implied as to the accuracy thereof, and it is submitted subject to errors, omissions, changes of price, rental or other conditions, prior sale, lease or financing, or withdrawal without notice.

2,552 SF
IND UNIT

3100 AIRWAY AVE, SUITE 142
COSTA MESA | CA 92626

FOR SUBLEASE



FOR MORE INFORMATION PLEASE CONTACT:

DEVIN RAY
VICE PRESIDENT



P: 949.242.1065
dray@daumcre.com
CADRE #02018130

TURNER WHITE
ASSOCIATE

P: 949.242.1717 | M: 925.550.8422
twhite@daumcommercial.com
CADRE #02249148

Although all information is furnished regarding for sale, rental or financing is from sources deemed reliable, such information has not been verified and no express representation is made nor is any to be implied as to the accuracy thereof, and it is submitted subject to errors, omissions, changes of price, rental or other conditions, prior sale, lease or financing, or withdrawal without notice.

