

For Lease

Office Building

3,616 - 4,205 SF | Negotiable



Stadium Healthcare Center

1810 Stadium Drive Phenix City, AL 36867

Click The WEB Icon Or 360 Icon For Our Interactive Website & Virtual Tour!

Offering Summary

Lease Rate:	Negotiable
Building Size:	35,267 SF
Available SF:	3,616 - 4,205 SF
Lot Size:	4.51 Acres

Property Highlights

- Class A Medical Office Building
- Full-Service Lease (includes Power, Water & CAM)
- Responsive Property Management Staff
- Private conference room & break room available for all tenants

Property Overview

Class "A" Medical Office Building located just off US-80 in Phenix City, Alabama.

Private conference room and break room available for all tenants.

For More Information

Jack Hayes, SIOR, CCIM, MICP

O: 706 660 5418 x1002

jhayes@g2cre.com | AL #000094654

For Lease

Office Building

3,616 - 4,205 SF | Negotiable



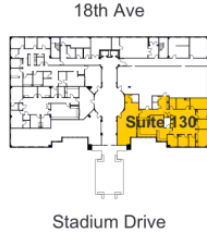
For Lease

Office Building

3,616 - 4,205 SF | Negotiable

Phenix City Medical Properties

1810 Stadium Drive
1st Floor, Suite 130
Phenix City, AL



Work Areas	QTY
Open Area	1
Rooms	1
Exam Rooms	6

Common Areas	QTY
Kitchen	1
Utility Areas	2
Bathroom	4



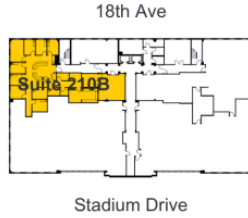
For Lease

Office Building

3,616 - 4,205 SF | Negotiable

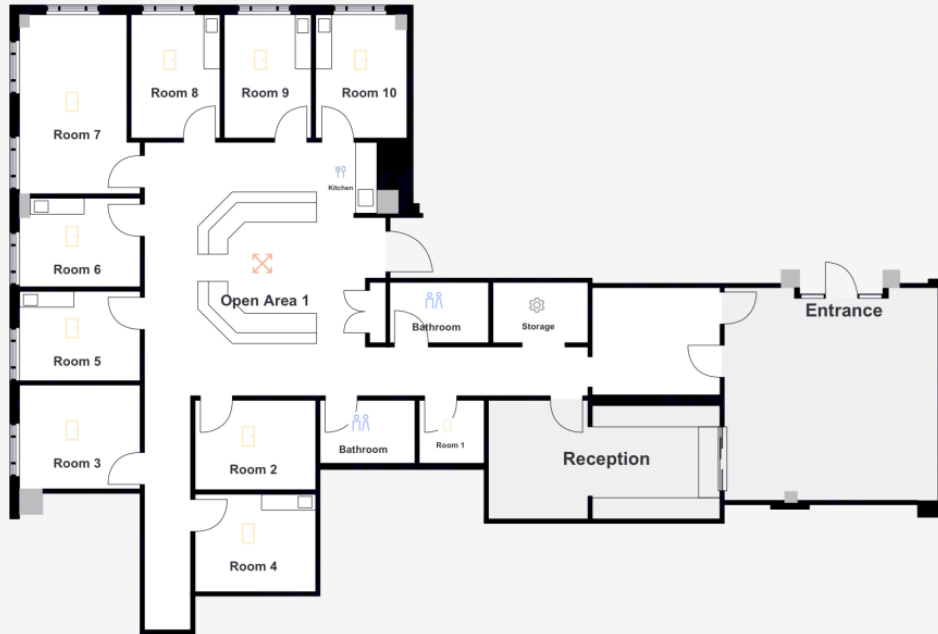
Phenix City Medical Properties

1810 Stadium Drive
2nd Floor, Suite 210B
Phenix City, AL



Work Areas	QTY
Open Area	1
Rooms	10

Common Areas	QTY
Kitchen	1
Bathroom	2
Utility Areas	1



For Lease

Office Building

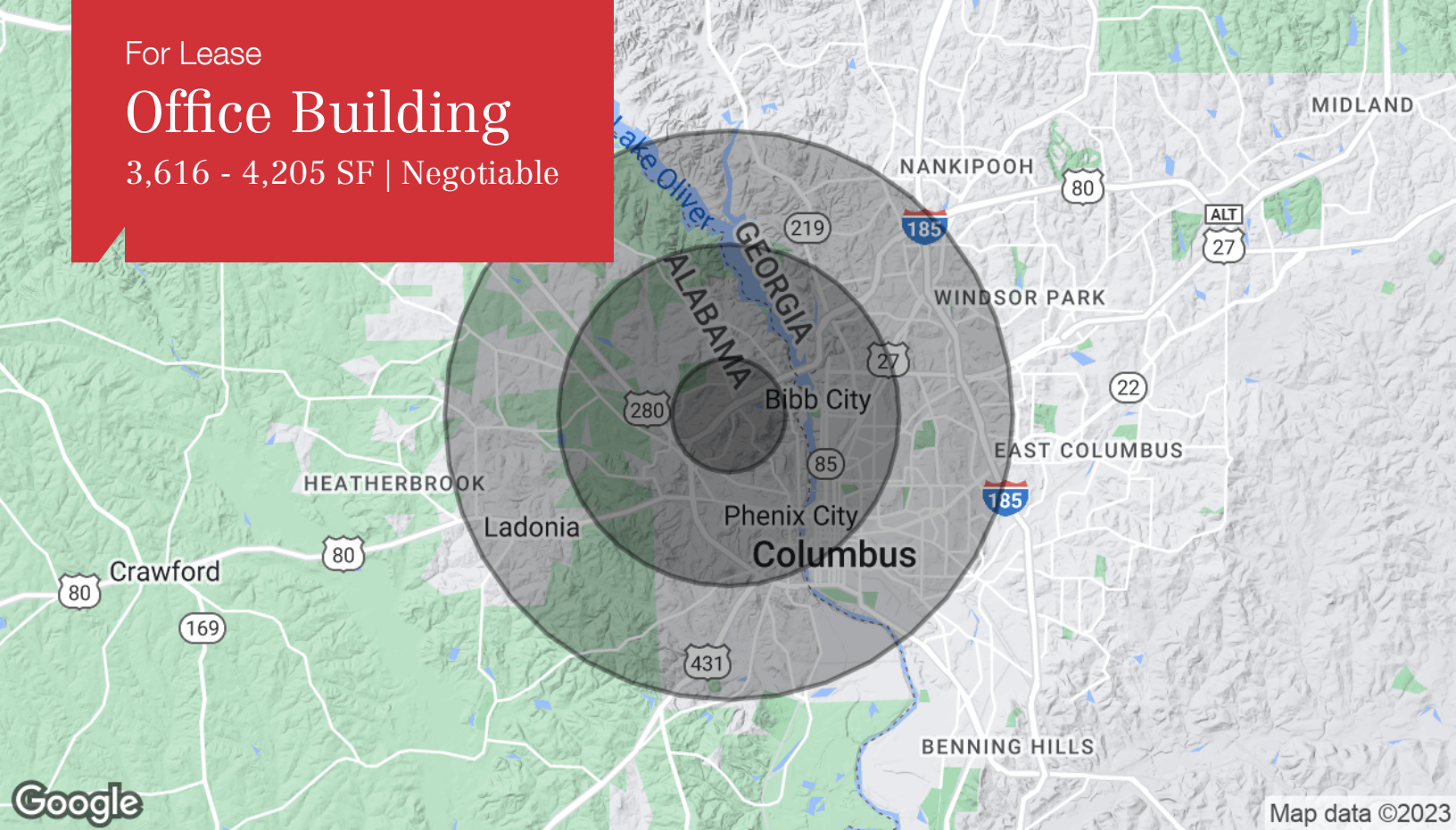
3,616 - 4,205 SF | Negotiable



For Lease

Office Building

3,616 - 4,205 SF | Negotiable



Population	1 Mile	3 Miles	5 Miles
Total Population	5,757	39,107	96,711
Average Age	33.4	34.7	35.7
Average Age (Male)	31.4	33.0	33.9
Average Age (Female)	36.3	36.4	37.2

Households & Income	1 Mile	3 Miles	5 Miles
Total Households	2,523	15,866	39,419
# of Persons per HH	2.3	2.5	2.5
Average HH Income	\$47,752	\$42,276	\$50,813
Average House Value	\$133,337	\$124,148	\$141,862

* Demographic data derived from 2020 ACS - US Census