

FOR LEASE

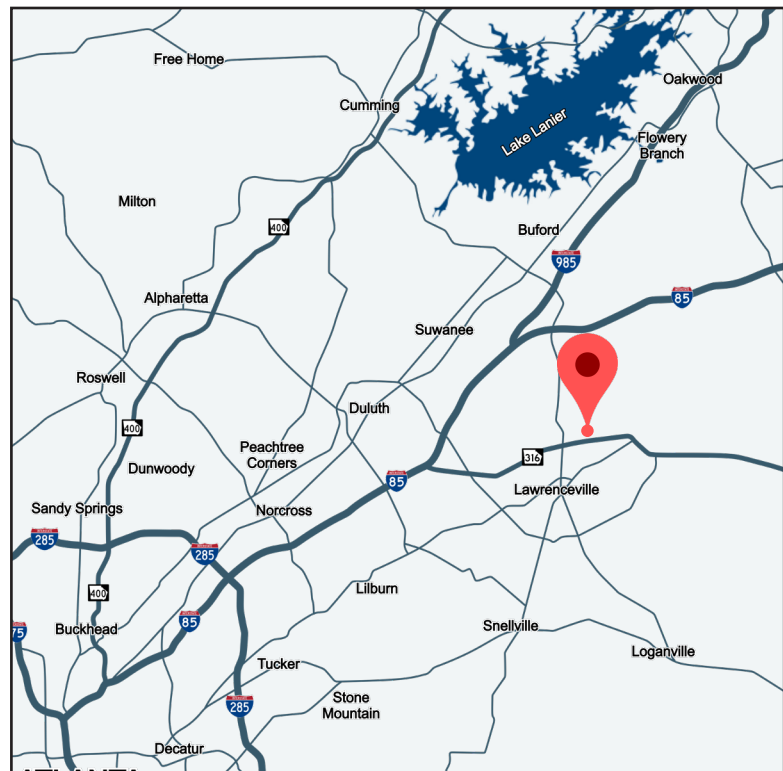
825 PROGRESS CENTER AVENUE, LAWRENCEVILLE, GA 30043

31,450 SF AVAILABLE



PROPERTY INFORMATION

- **SUITE B: 31,450 SF Available**
 - 4,655 SF Office
 - 26,795 SF Warehouse
 - Five (5) 8'x10' Dock-High Doors
 - Three (3) 10'x12' Dock-High Doors
 - Three (3) 12'x14' Drive-In Doors
 - End Cap Suite
- ±52,600 SF Rear Load Industrial Building
- Dock-High & Drive-In Loading
- 22' Clear Height
- Fully Sprinklered
- Ample Parking
- Located within Gwinnett Progress Center, a 1,500-acre master-planned business park
- Immediate access to GA-316 (±0.25 miles)



All information contained herein is believed to be accurate but is not warranted. This offer is subject to errors, omissions, prior sale or withdrawal.



Hughes Commercial Real Estate, Inc.
8215 Roswell Road, Building 700
Atlanta, GA 30350
770-559-1099 | hughes-cre.com

Matt Nelsen
404-431-0971
matt@hughes-cre.com

Owned & Managed By:
THE MERITEX
COMPANY

FOR LEASE

825 PROGRESS CENTER AVENUE | SUITE B | LAWRENCEVILLE, GA 30043

SUITE B

31,450 SF Suite

26,795 SF Warehouse

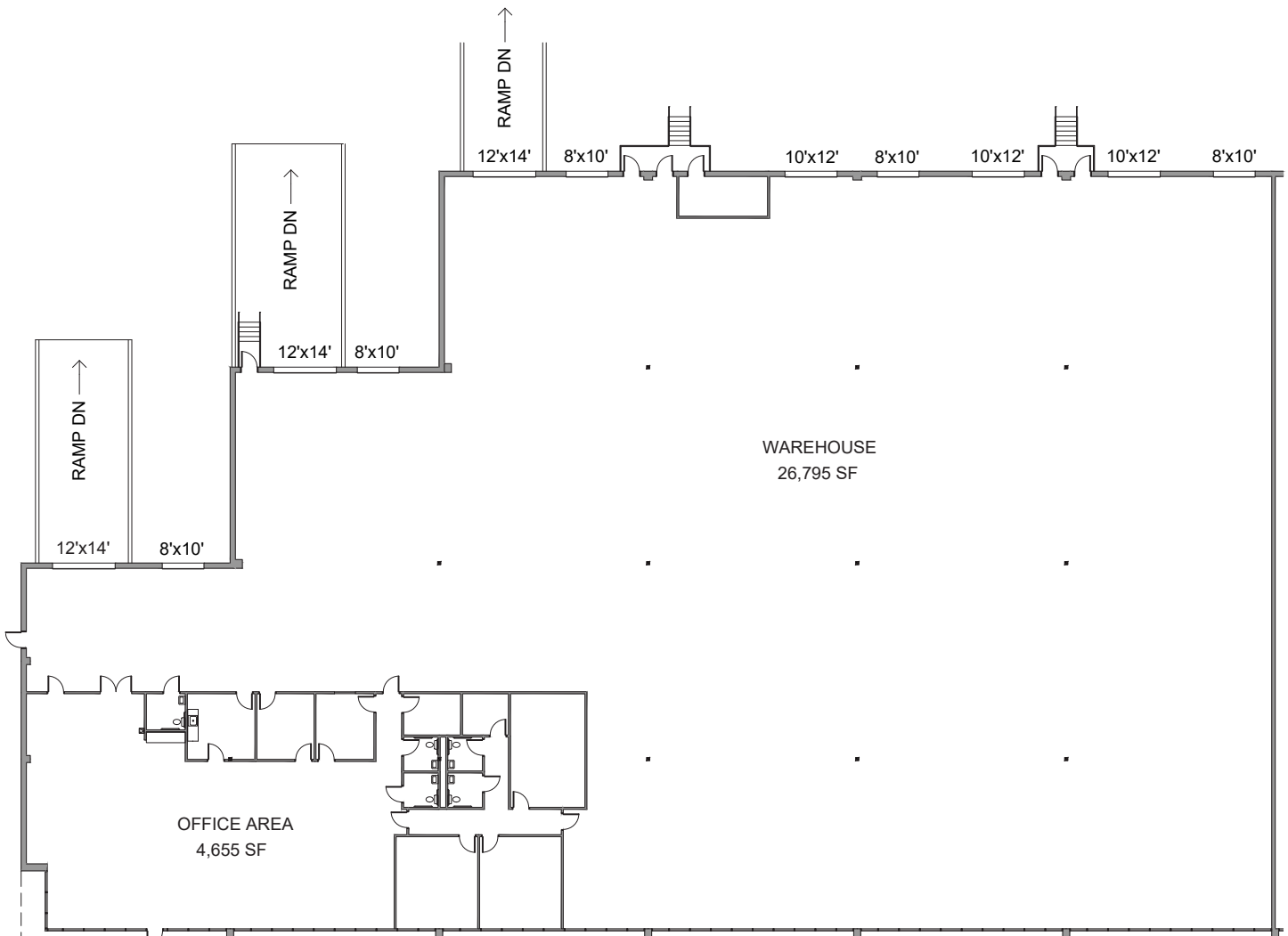
4,655 SF Office

Five (5) 8'x10' Dock-High Doors

Three (3) 10'x12' Dock-High Doors

Three (3) 12'x14' Drive-In Doors

End Cap Suite



All information contained herein is believed to be accurate but is not warranted. This offer is subject to errors, omissions, prior sale or withdrawal.



Hughes Commercial Real Estate, Inc.
8215 Roswell Road, Building 700
Atlanta, GA 30350
770-559-1099 | hughes-cre.com

Matt Nelsen
404-431-0971
matt@hughes-cre.com

Owned & Managed By:
THE
MERITEX
COMPANY