

FOR LEASE

UP TO ± 11.89 ACRES INDUSTRIAL OUTSIDE STORAGE

1305 CAVALIER BOULEVARD, CHESAPEAKE, VA 23323

IMMEDIATELY AVAILABLE



- Centrally Located within Cavalier Industrial Park
- Up to 9.9 Useable Acres Outside Storage Available
- Up to 10,273 sf Cross Dock Warehouse Available
- 19 rollup doors (18 docks, 1 ramp)
- Fenced, Secured, Stabilized, and Lighted
- M1 - LIGHT INDUSTRIAL ZONING
- IMMEDIATE ACCESS TO I-64 INTERCHANGE & HAMPTON ROADS BELTWAY
- In close proximity to I-664, I-64 and I-264
- ± 8.3 MILES TO PMT, ± 10.4 MILES TO VIG, AND ± 13.54 MILES TO NIT
- PERMITTED USES: CONTAINER/TRAILER STORAGE AND MAINTENANCE, TRUCKING, AND CONTRACTOR STORAGE YARD.

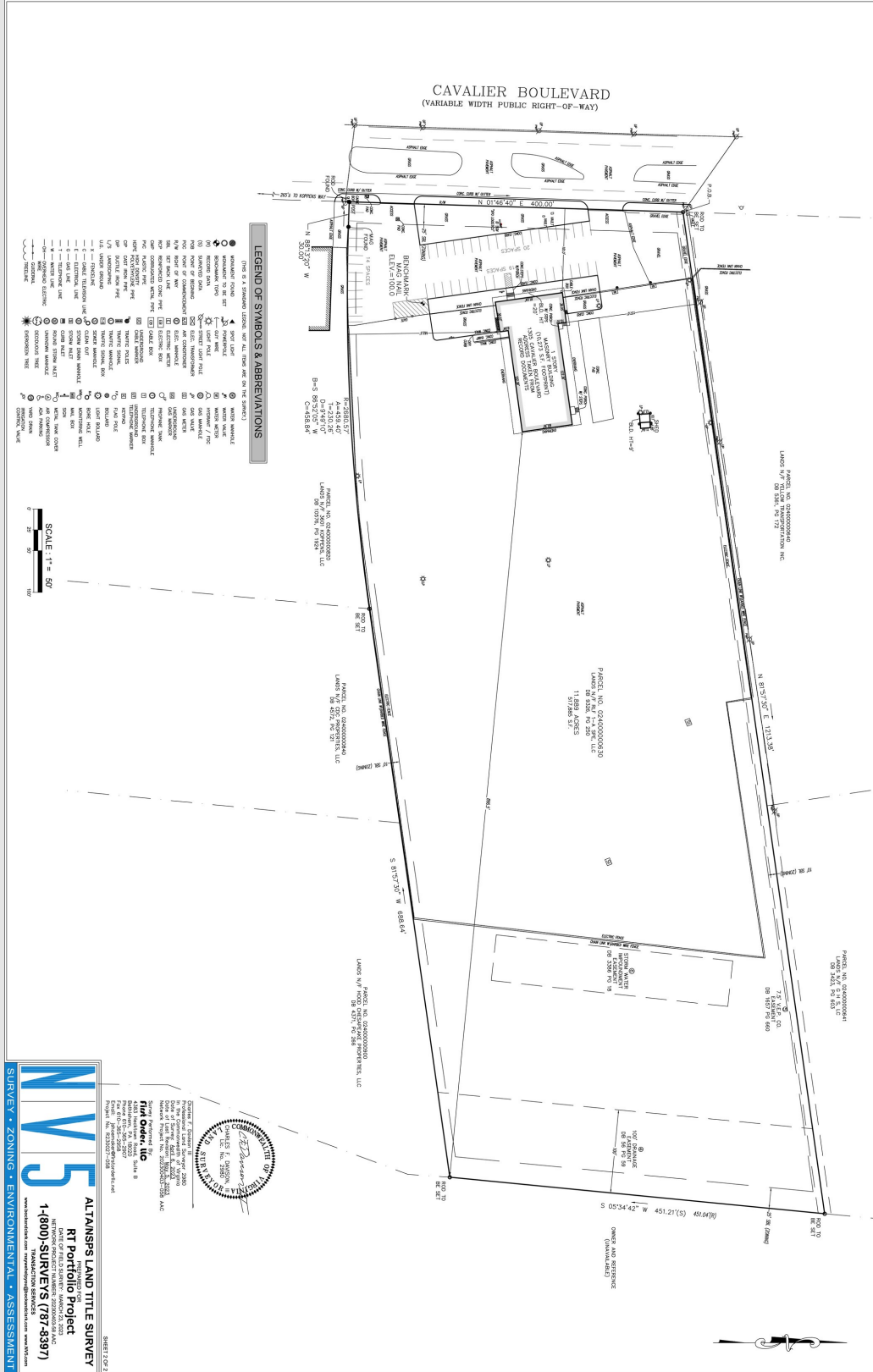
FOR INFORMATION, PLEASE CONTACT:

JOHN MERENDA

JMS Commercial
johnmerenda1@yahoo.com
(757) 560-5476



SITE PLAN/SURVEY

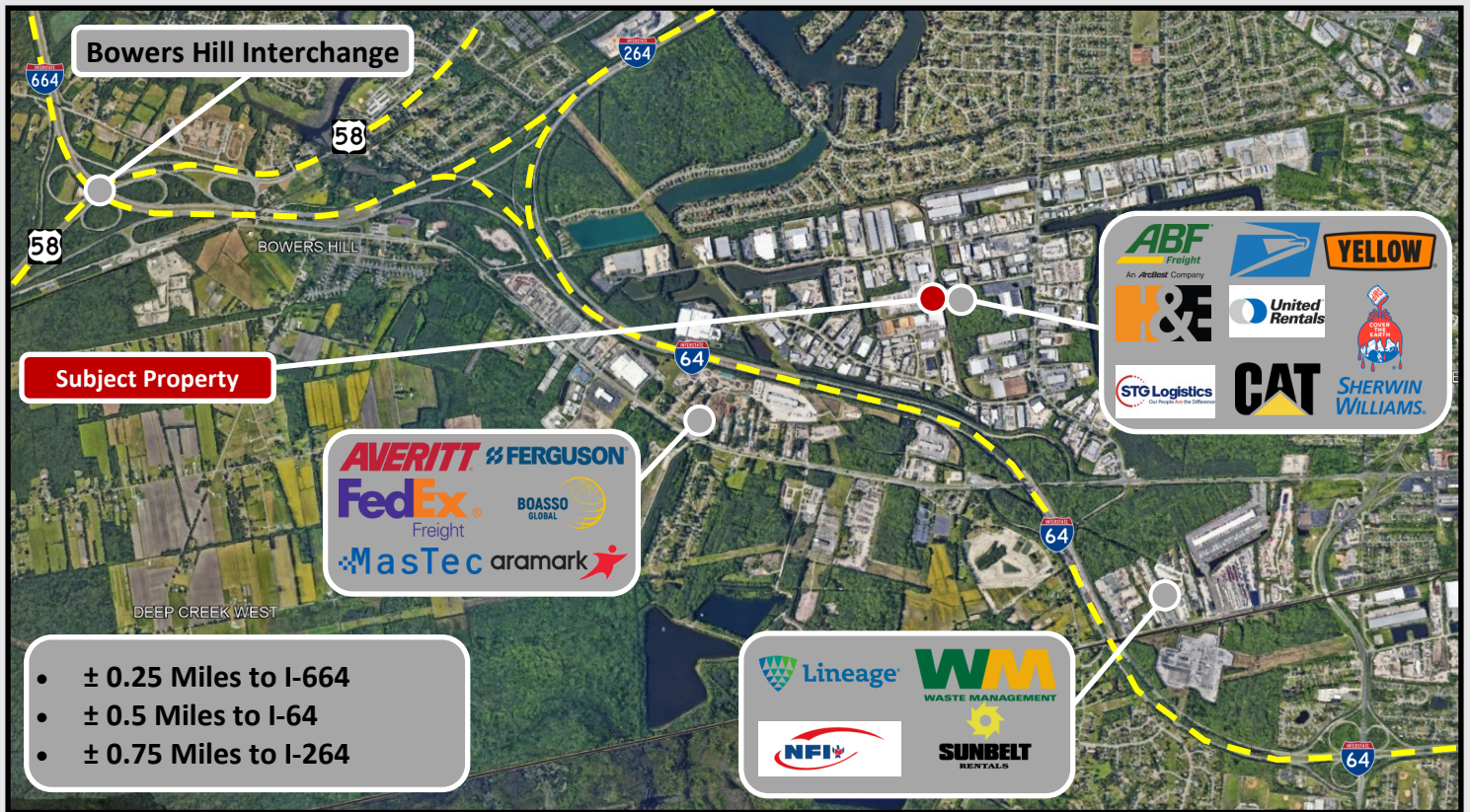
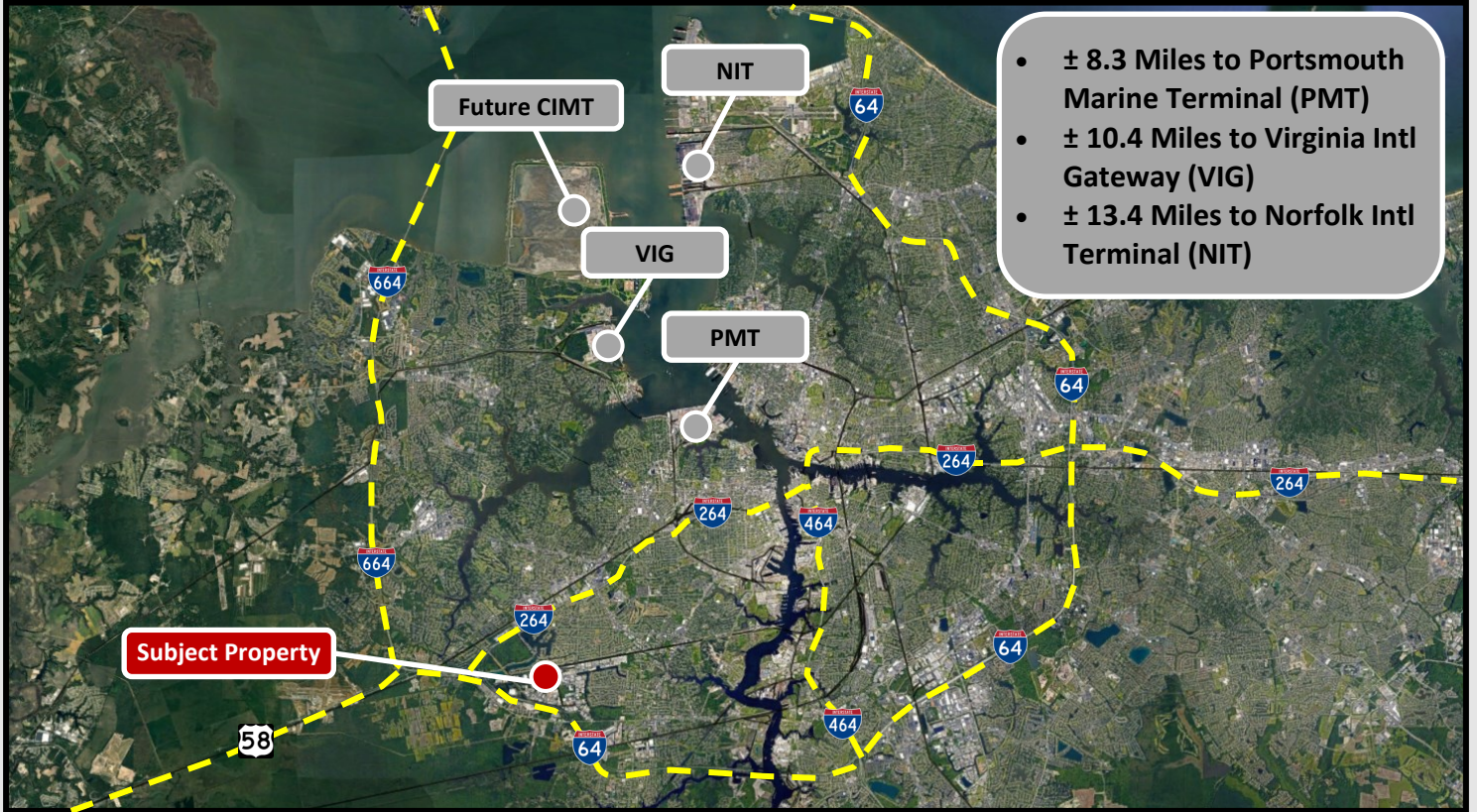


FOR INFORMATION, PLEASE CONTACT:

JOHN MERENDA
JMS Commercial
johnmerenda@yahoo.com
(757) 560-5476



AERIALS



FOR INFORMATION, PLEASE CONTACT:

JOHN MERENDA
 JMS Commercial
 johnmerenda1@yahoo.com
 (757) 560-5476

