

818 K STREET

NOW LEASING

KRESS



GLOBAL  
I.N. INC.



GLOBAL  
I.N. INC.

MIKE WAHBA  
PRESIDENT

GLOBAL INVESTORS NETWORK,  
THE GLOBAL INVESTMENT COMPANY  
DIRECT: 415.312.7706  
MIKE@GLOBALIN.US

The information contained in the following offering memorandum is proprietary and strictly confidential. It is intended for the sole use of the party receiving it from Global Investors Network Inc. It is not to be shared, copied, distributed or made available to any other person or entity without the written consent of Global Investors Network Inc. The purpose of this offering memorandum is to provide a summary and unverified snapshot of information regarding the subject property to prospective purchasers for the purpose of establishing a preliminary level of interest. The information contained in this offering memorandum has been obtained from sources deemed reliable; however, Global Investors Network Inc. has not investigated or verified the accuracy of the information contained herein. Global Investors Network Inc. makes no warranty or representation whatsoever regarding the accuracy or completeness of the information contained in this offering memorandum. Furthermore, Global Investors Network Inc. makes no warranty or representation in regards to the income or expenses of the subject property; the present or future financial performance of the subject property; the physical characteristics, aspects and conditions of the property and the improvement; the presence or absence of any contaminating substance; the financial condition or business prospects of any tenant, or any tenants' plans or intentions to continue or terminate its occupancy of the subject property.

While Global Investors Network Inc. has no reason to believe that the information provided herein contains material inaccuracy, Global Investors Network Inc. including its officers, owners, employees and agents make no representations or warranties, expressed or implied as to the accuracy or completeness of the information, including, without limitation, any financial projections and information as to engineering or environmental matters, or as to the future performance of the property. Prospective purchasers should realize that any financial projections are estimates only, and are based on factors that may change in the future. Accordingly, any such projections should not be relied upon. Prospective purchasers should make their own projections and form their own conclusions without reliance upon the information contained herein, and should conduct their own due diligence, including engineering and environmental inspections, to determine the condition of the property and the existence of any potentially hazardous material located at the property site or used in the construction or maintenance of the improvements of the property site. A prospective purchaser's sole and exclusive rights with respect to this prospective transaction shall be limited to those expressly provided in an executed Purchase Agreement and shall be subject to the terms thereof. In no event shall a prospective purchaser have any other claims against Global Investors Network Inc. or its officers, owners, employees or agents for any damages, liability, or causes of action relating to this solicitation process or the marketing or sale of the property.

W

KRESS

## PROPERTY OVERVIEW

±18,000  
SF

1 BLOCK  
GOLDEN 1 CENTER  
AND DOCO

IDEAL SPACE  
RETAIL  
RESTAURANT / NIGHTCLUB

\$2/SF  
NNN

The Kress is a world class asset in the heart of Downtown Sacramento and the finest example of its style in the city. Built in 1931 and designed by architect John Fleming in classic Art Deco motif, the Kress is an iconic six-story structure with a striking granite exterior and the finest example of its style in the city.

As Sacramento's first "high rise", the Kress Building was an important milestone in the city's urbanization and a prominent feature of the city's skyline for decades. The Kress features 48 luxury lofts, street level retail and lower-level with 12 ft.+ ceiling heights.

# PROPERTY OVERVIEW



ROOFTOP

LUXURY LOFT / VENUE

# PROPERTY OVERVIEW

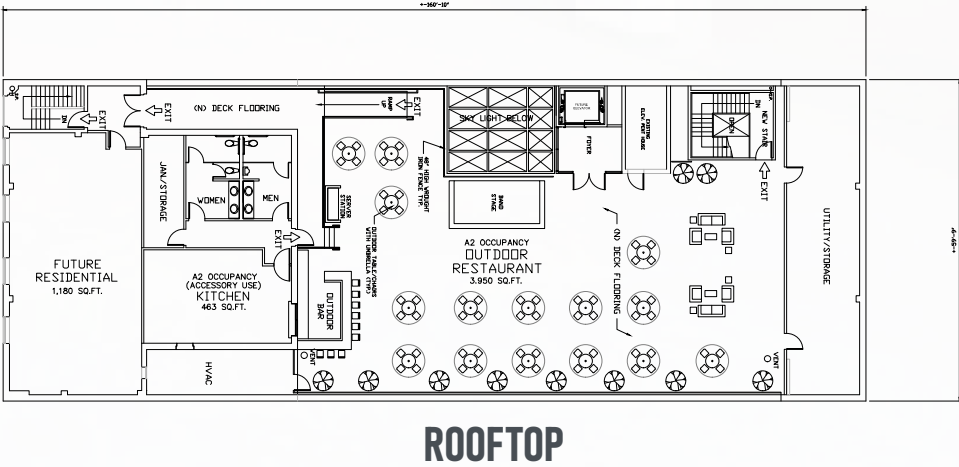
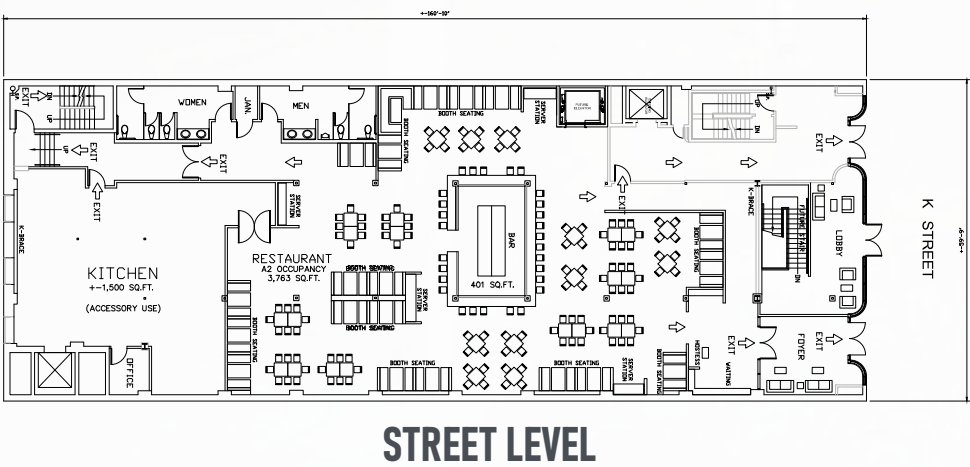
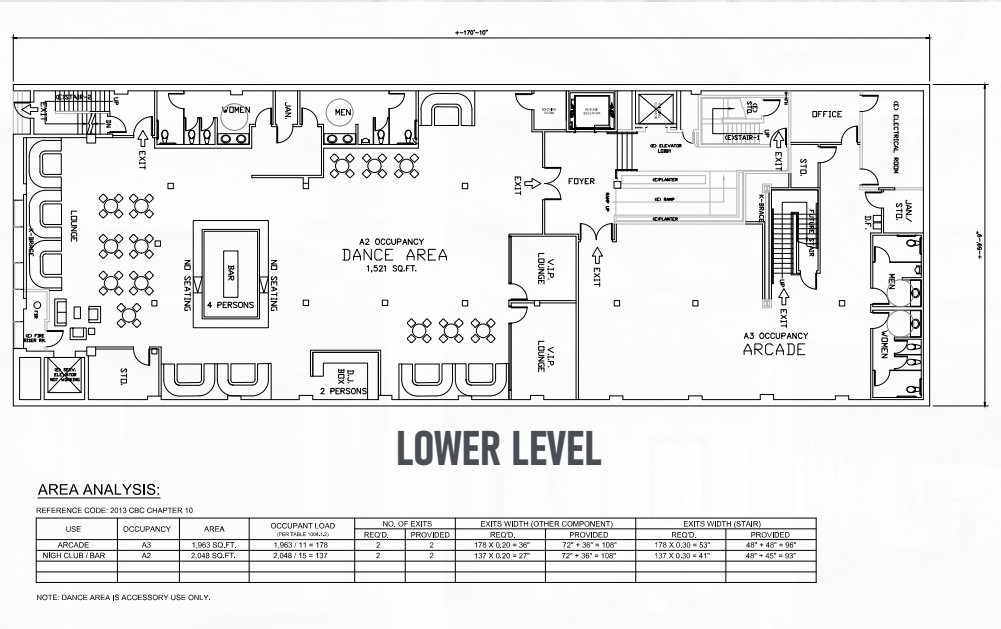
STREET LEVEL RETAIL

±9,000 SQUARE FEET

LOWER LEVEL

±9,000 SQUARE FEET

FLOOR PLANS



# AREA OVERVIEW

DOWNTOWN COMMONS

GOLDEN 1 CENTER

THE HARDIN / 700 BLOCK

KRESS / 818 K ST





## DOCO - Downtown Commons

DOCO is the new hub of all downtown Sacramento activity, the common ground that unites Sacramento and offers a gathering place for the community. It is a 2 level outdoor mixed-use entertainment and shopping complex that also houses the Kimpton Sawyer Hotel and other specialty shops, restaurants and eateries.



## THE HARDIN - 700 BLOCK

\$60 million rehabilitation of the 700 Block of K Street into mixed-use space to include restaurants, retail, and nightlife on the first floor with multifamily upstairs.



# SACRAMENTO KINGS ARENA

## GOLDEN 1 CENTER

The Golden 1 Center is an indoor arena seating over 17,000, completed in 2016. As the home of the NBA's Sacramento Kings, it has played a major role in the urban revitalization of downtown. The Golden 1 Center, a \$475 million project funded by the City of Sacramento and Sacramento Kings subsidiaries, hosts 150 annual events ranging from basketball games to concerts to entertainment shows. The Arena is the prime catalyst at the core of the explosive growth and revitalization of Downtown Sacramento.





# KRESS

MIKE WAHBA  
mike@globalin.us  
415.312.7706



GLOBAL  
LINX