

Rare Infill Location Along the 355 Corridor

15733 W 163rd Street, Lockport, IL

±108.67 Acres

CBRE

www.cbre.us/lsgoakbrook

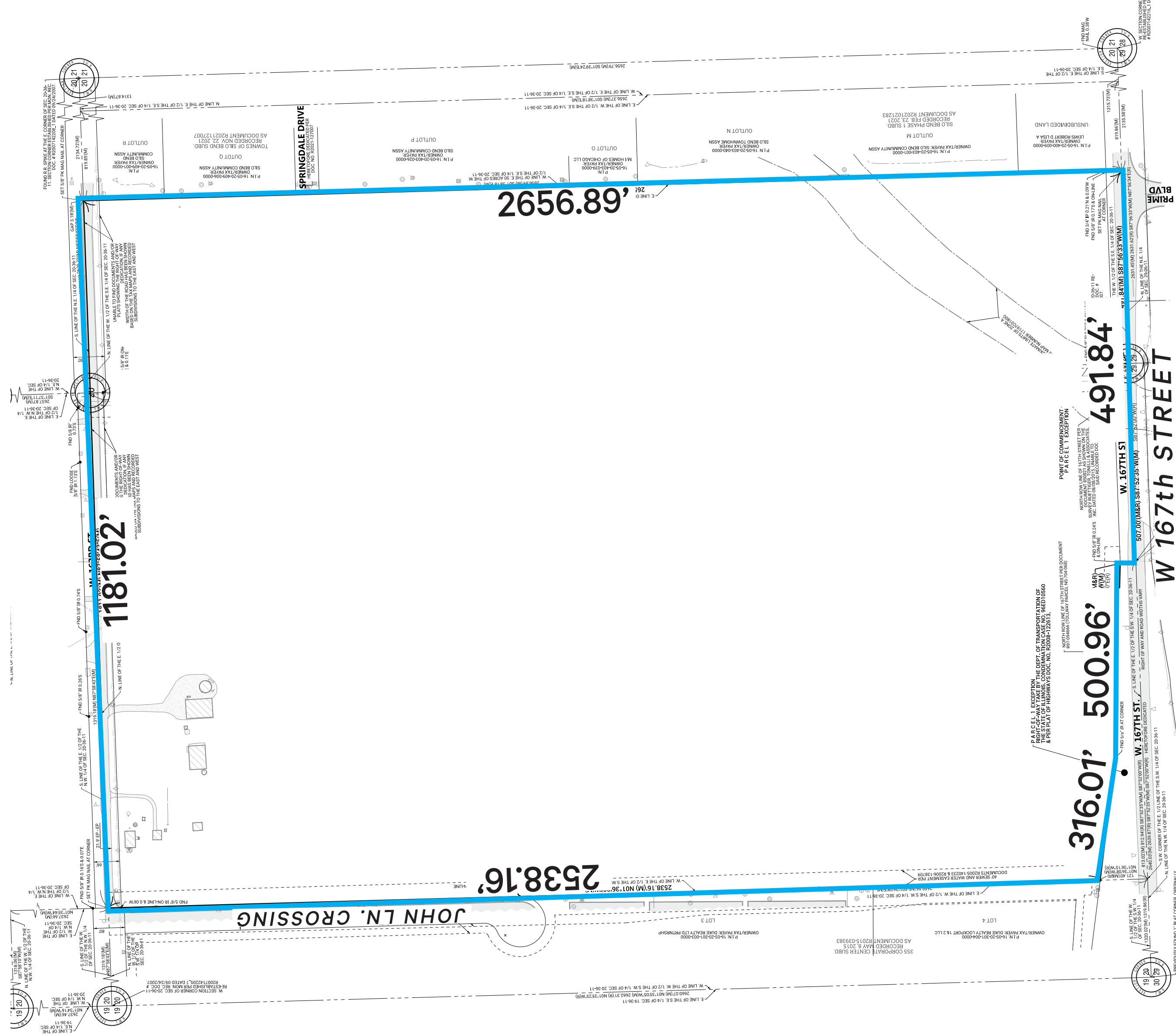


Property Availability

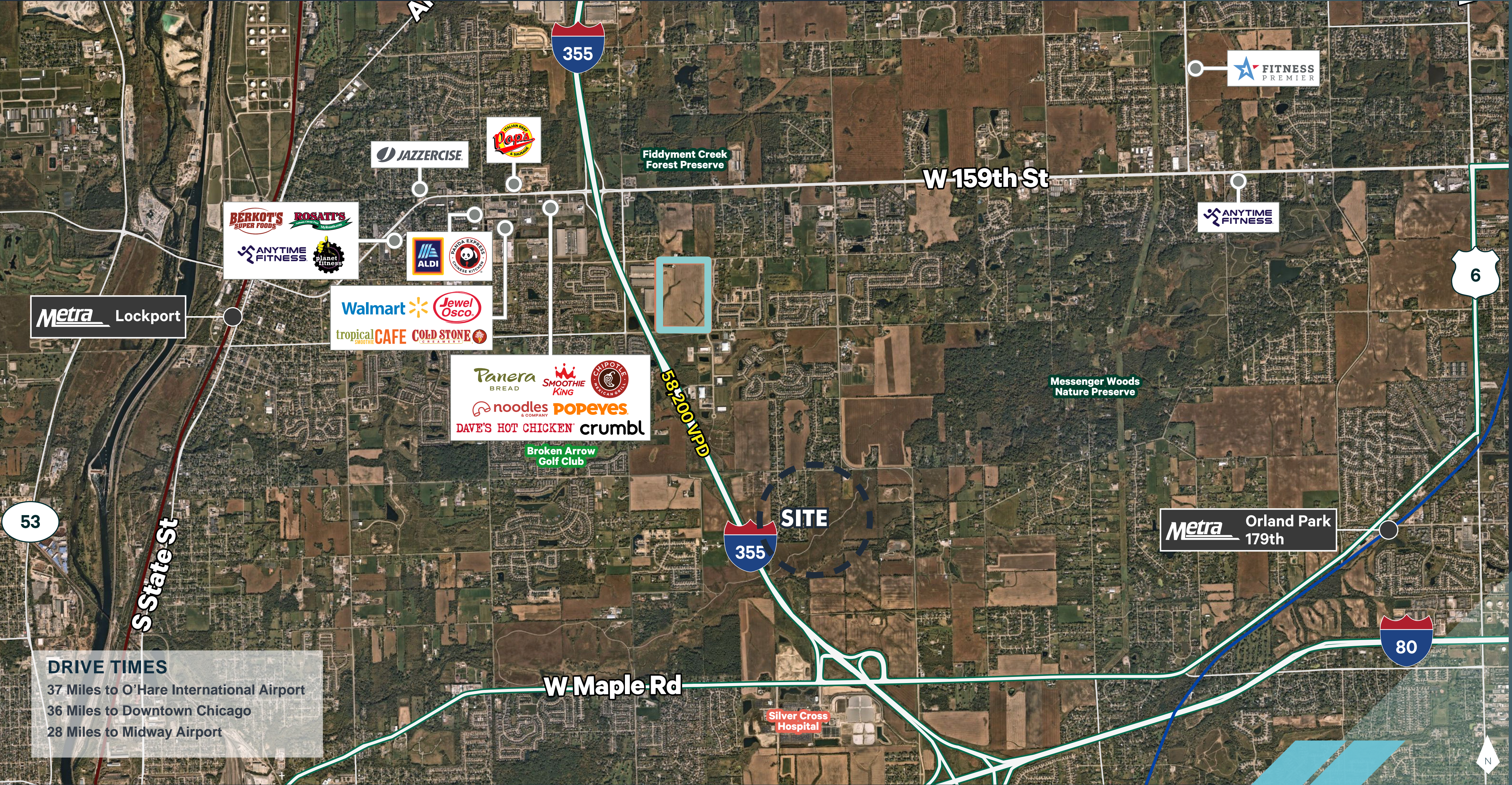
- » ±108.7 Acres
- » Located just East of I-335, with easy access from 159th St via Gougar Rd
- » Frontage along both 163rd & 167th Streets
- » Zoned A1-Agriculture (east portion)
Potential uses include data center, flex/office uses and/or residential
- » Within Homer Central Consolidated School District 33C and within Lockport Township HS, rated #6 Best High Schools in Will County
- » PIN Numbers: 16-05-20-300-002-0010, 16-05-20-300-002, 16,05-20-400-001.
- » Taxes: \$8,040
- » Traffic Counts:
1,800 vehicles per day on 163rd Street
5,550 vehicles per day on 16th Street
58,200 vehicles per day on I-355
- » Asking Price: Subject to Offer
- » Please Call For Additional Information.



Survey



Amenities & Transportation



Demographics

DEMOS	1 MILE	2 MILE	3MILE
Population	4,126	36,187	89,417
Households	1,323	13,659	31,969
Average Household Income	\$152, 993	\$127,358	\$131,152
Average Housing Value	\$438,568	\$384,864	\$391,712

Traffic Counts

163rd Street	1,800 VPD
167th Street	5,550 VPD
I-355	58,200 VPD

Floodplains/Wetlands



15733 W 163rd Street

LOCKPORT, IL

Contact Us:

Matt Ishikawa

Senior Vice President
+1 630 573 7068
matt.ishikawa@cbre.com

CBRE

© 2025 CBRE, Inc. All Rights Reserved. This information has been obtained from sources believed reliable but has not been verified for accuracy or completeness. CBRE, Inc. makes no guarantee, representation or warranty and accepts no responsibility or liability as to the accuracy, completeness, or reliability of the information contained herein. You should conduct a careful, independent investigation of the property and verify all information. Any reliance on this information is solely at your own risk.

www.cbre.us/lsgoakbrook

