



**118** | **1,200 SF + BASEMENT**  
EAST 116TH STREET  
EAST HARLEM, NYC  
**RETAIL FOR LEASE**



## PROPERTY DESCRIPTION

# PROPERTY HIGHLIGHT

- 1,200 SF + Basement
- 9.5 ft Ceiling Heights
- Heavy foot traffic
- HVAC in place
- FRONTAGE: 10 FT
- Possession: Immediate
- Term: Negotiable

## COMMENTS

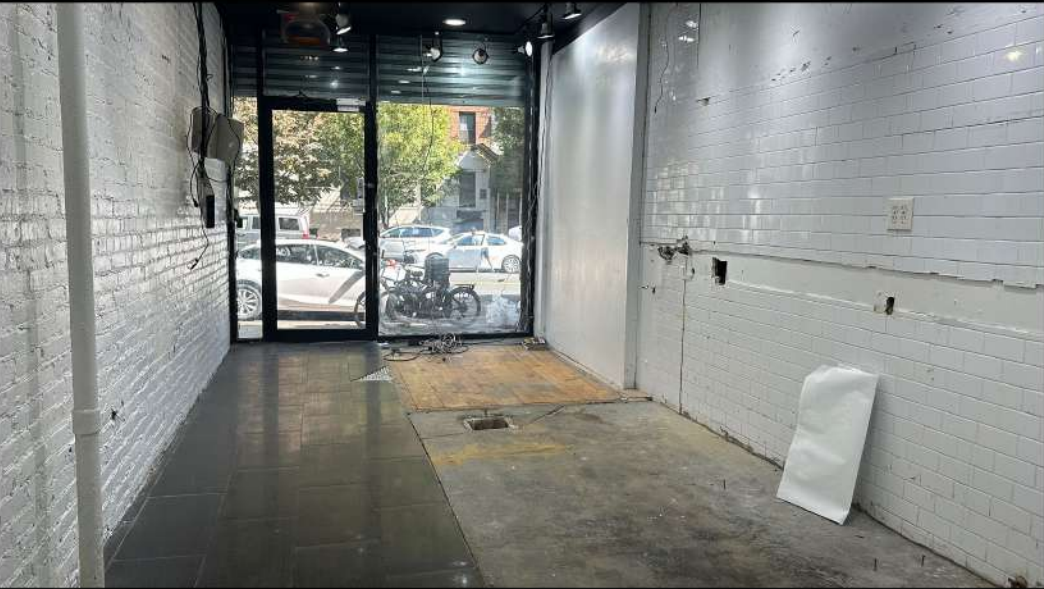
- Prime East Harlem location within walking distance to the 6 train
- Venting possible and gas in the building
- Private bathroom in place
- Becoming one of NYC's most populated neighborhoods
- All uses considered - ideal for F&B

## NEIGHBORS

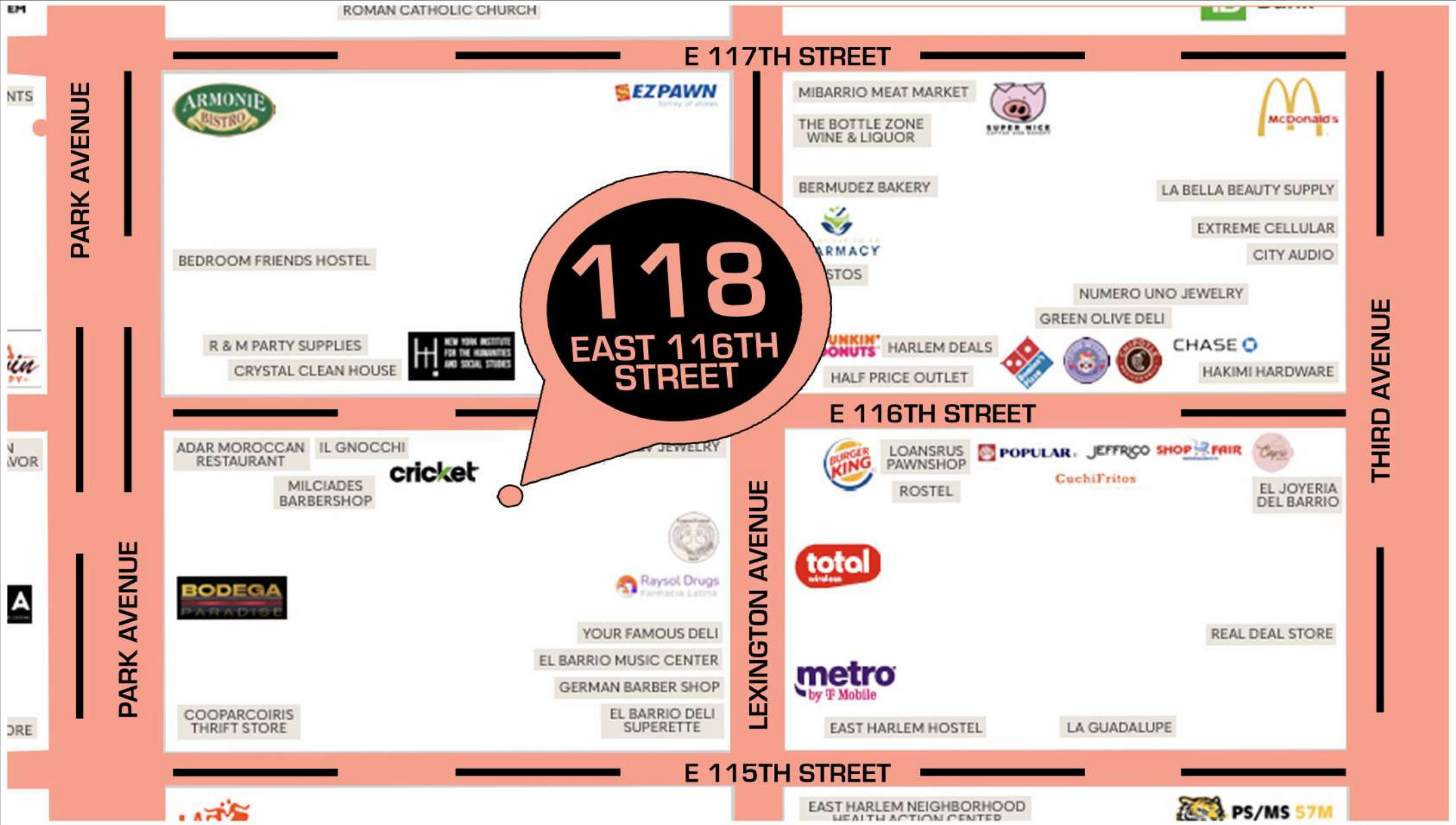
- |                            |                     |
|----------------------------|---------------------|
| - Cricket Wireless         | - Boost Mobile      |
| - Il Gnocchi               | - Dunkin' Donuts    |
| - Adar Moroccan Restaurant | - Super Nice        |
| - Armonie Bistro           | - Coffee and Bakery |
| - Cravin' Crispy           | - McDonald's        |
|                            | - Burger King       |







PROPERTY LOCATION





## CONTACT

**ARYEH VILINSKY**  
**(917) 450-9773**  
**[aryeh@taharirealty.com](mailto:aryeh@taharirealty.com)**

632 BROADWAY NEW YORK, NY 10012  
**[www.taharirealty.com](http://www.taharirealty.com)**