

High Traffic Retail Suites for Lease

Library Center Shops | Newly Remodeled Center



9537-9645 W. 87th Street Overland Park, KS 66212



Join JoCo Library, QuikTrip, Jason's Deli, McDonalds in this High Traffic Center!

Property Details

Rent Starting @ \$12.00 / SF + \$4.00 NNN

Tenant to Handle Own: Gas, Electric, Insurance, Internet, Security & Trash

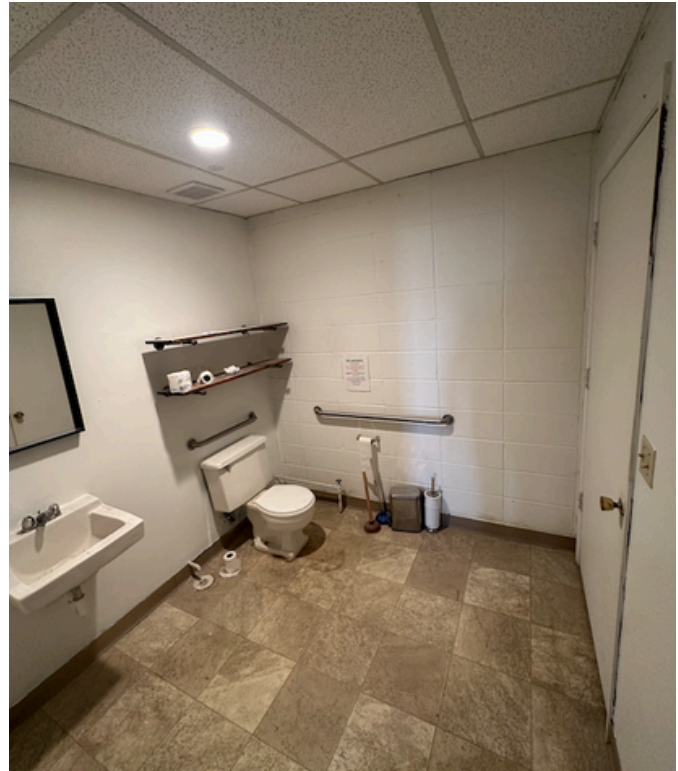
- Suite 9557 - 2,400 SF, In-Line Space: 3 Offices, Break Room, & Restroom
- Suite 9627 - 1,200 SF, In-Line Space: Reception, Private Office, Restroom
- Suite 9629 - 1,200 SF, In-Line Space: Open Floor Plan, Storage, Restroom

Josh Haith
Josh@Haith.com
O: (913) 888-3456 x 7
www.Haith.com

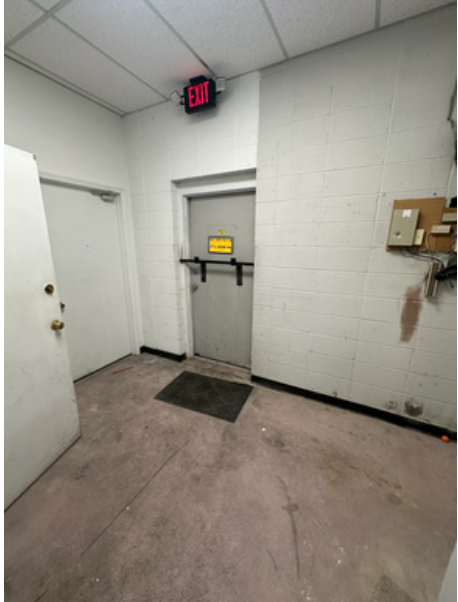
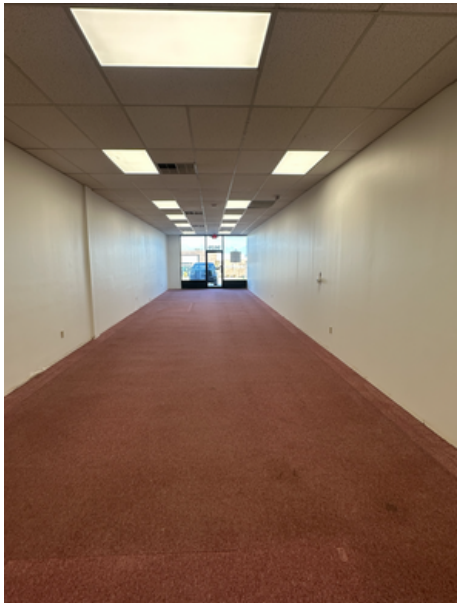


Jake LaFevers
Jake@Haith.com
O: (913) 888-3456
M: (816) 642-7287

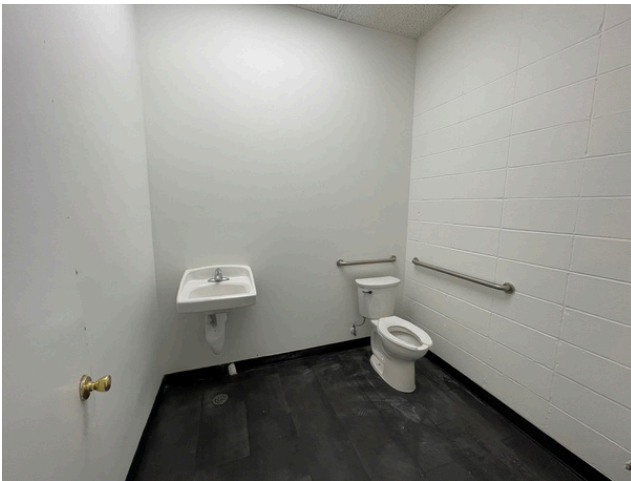
- \$1,200 Per Month + \$4.00 NNN
- Tenant Handles: Gas, Electric, Insurance, Internet, Security & Trash
- Open Area in Front
- Reception Office, Private Office, Open Area for Storage, Restroom
- High Traffic Area
- Monument Signage Available
- Join QT, JoCo Library, Jason’s Deli, McDonalds
- Minutes to I-35, Hwy 69 & Metcalf

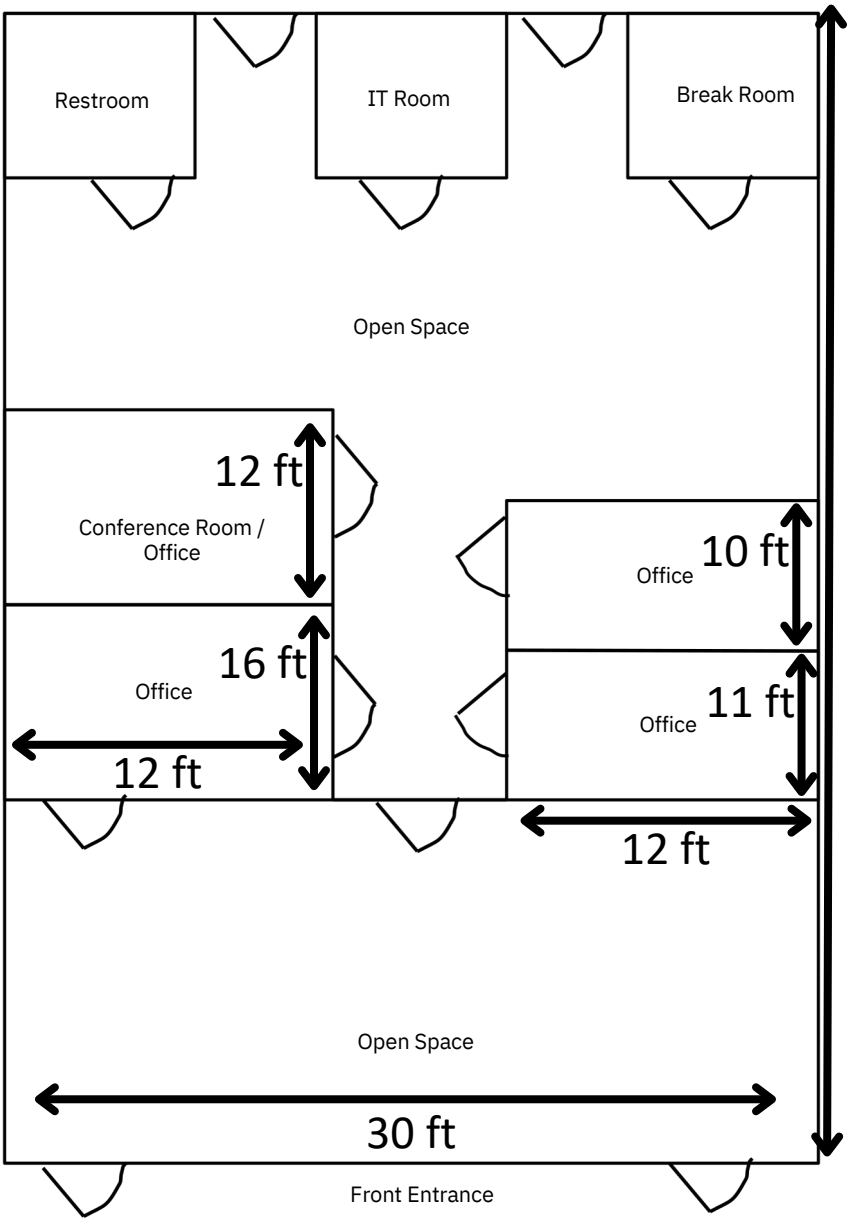


- \$1,200 Per Month + \$4.00 NNN
- Tenant Handles: Gas, Electric, Insurance, Internet, Security & Trash
- Mostly Open Floor Plan
- Back Storage Area, Restroom
- High Traffic Area
- Monument Signage Available
- Join QT, JoCo Library, Jason's Deli, McDonalds
- Minutes to I-35, Hwy 69 & Metcalf



- \$2,400 Per Month + \$4.00 NNN
- Tenant Handles: Gas, Electric, Insurance, Internet, Security & Trash
- Open Area in Front & Back
- 3 Offices, Break Room, Conference Room, Restroom, IT Room
- High Traffic Area
- Monument Signage Available
- Join QT, JoCo Library, Jason's Deli, McDonalds
- Minutes to I-35, Hwy 69 & Metcalf

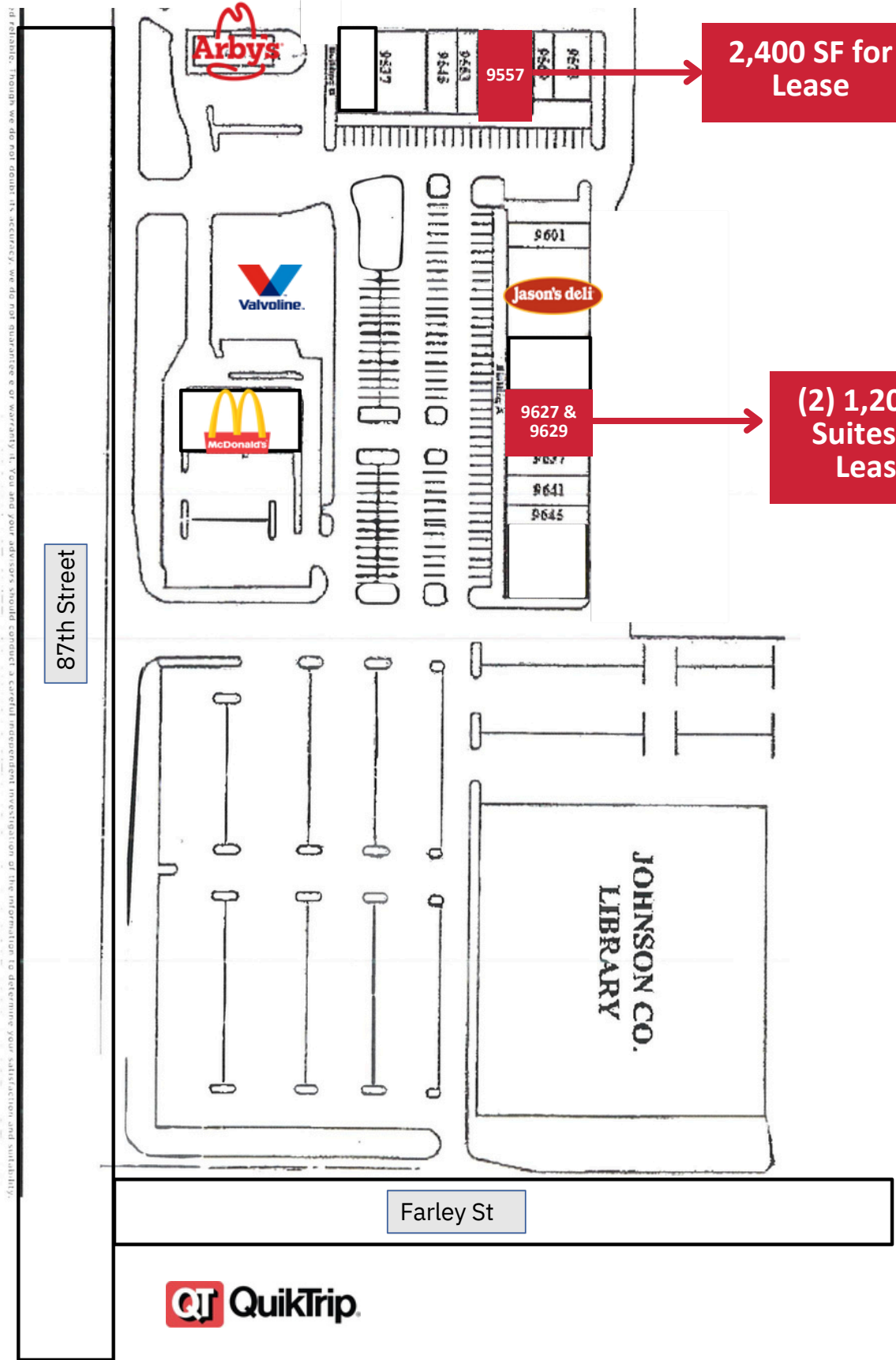




Monument Signage Available



Library Center Shops | 1,200 - 2,400 SF Available
9609-9617 W. 87th Street | \$12.00 PSF + \$4.00 NNN



Josh Haith
Josh@Haith.com
O: (913) 888-3456 x 7
www.Haith.com



Jake LaFevors
Jake@Haith.com
O: (913) 888-3456
M: (816) 642-7287