



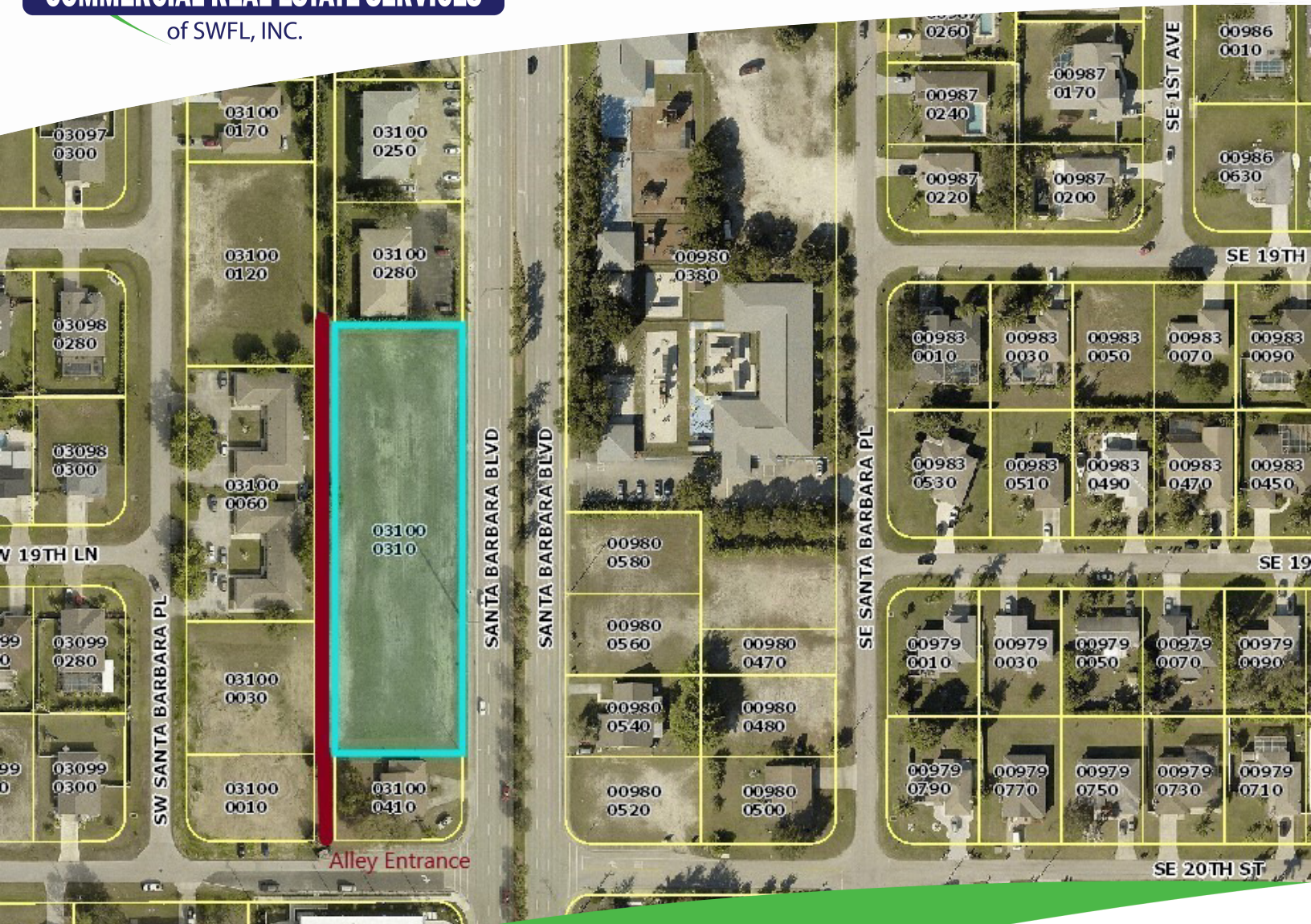
**COMMERCIAL REAL ESTATE SERVICES**

of SWFL, INC.

**CARLOS ACOSTA, CCIM**

239.823.0115

cacosta@ccim.net



FOR SALE

# 1928 SANTA BARBARA BLVD

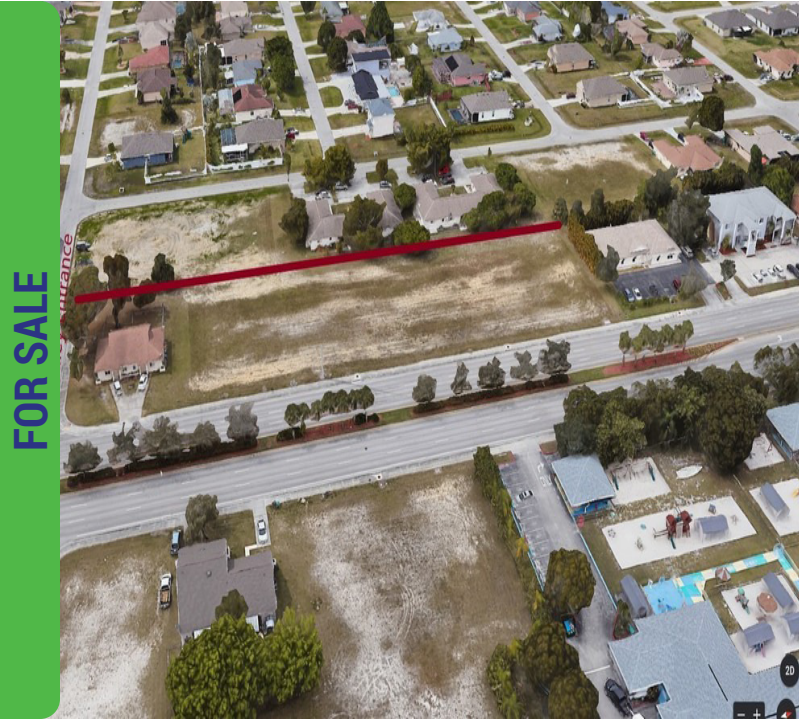
CAPE CORAL, FL 33991



# 1928 SANTA BARBARA BLVD CAPE CORAL, FL 33991



## Prime Commercial Lot



### SALE PRICE

**\$675,000**

### OFFERING SUMMARY

STRAP #: 26-44-23-C2-03100.0310

Lot Size: 52,272 SQ FT

Price / SF: \$12.91

### DEMOGRAPHICS

	1 MILE	3 MILES	5 MILES
Total Population	8,861	63,274	130,862
Total Households	3,076	23,325	50,416
Median Age	39.4	40.5	41.9
Average HH Income	\$63,048	\$60,678	\$61,572

### PROPERTY OVERVIEW

Price Includes Site Plans for 11,000 Square Foot Building with Ample Parking

1.2 Acres Vacant Land

2 miles North of Veterans Pkwy

Commercial Zoning

Access in the Rear through Alley

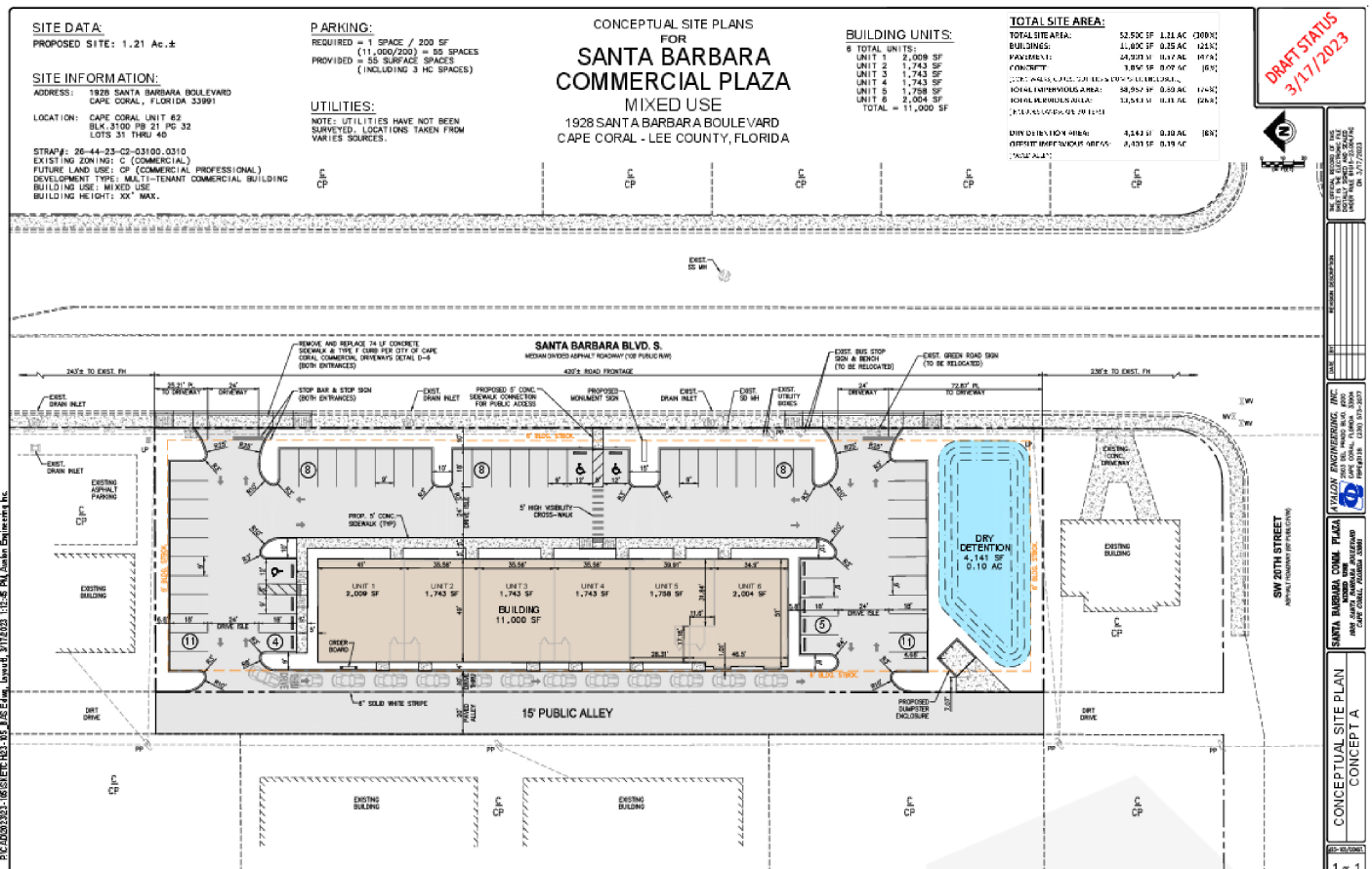
**CARLOS ACOSTA, CCIM**  
239.823.0115  
cacosta@ccim.net

**CRES Commercial Real Estate Services of SWFL, INC**  
1490 NE Pine Island Rd Suite 6F • Cape Coral, FL 33909  
239.980.0081 • cresswfl.com

# 1928 SANTA BARBARA BLVD CAPE CORAL, FL 33991



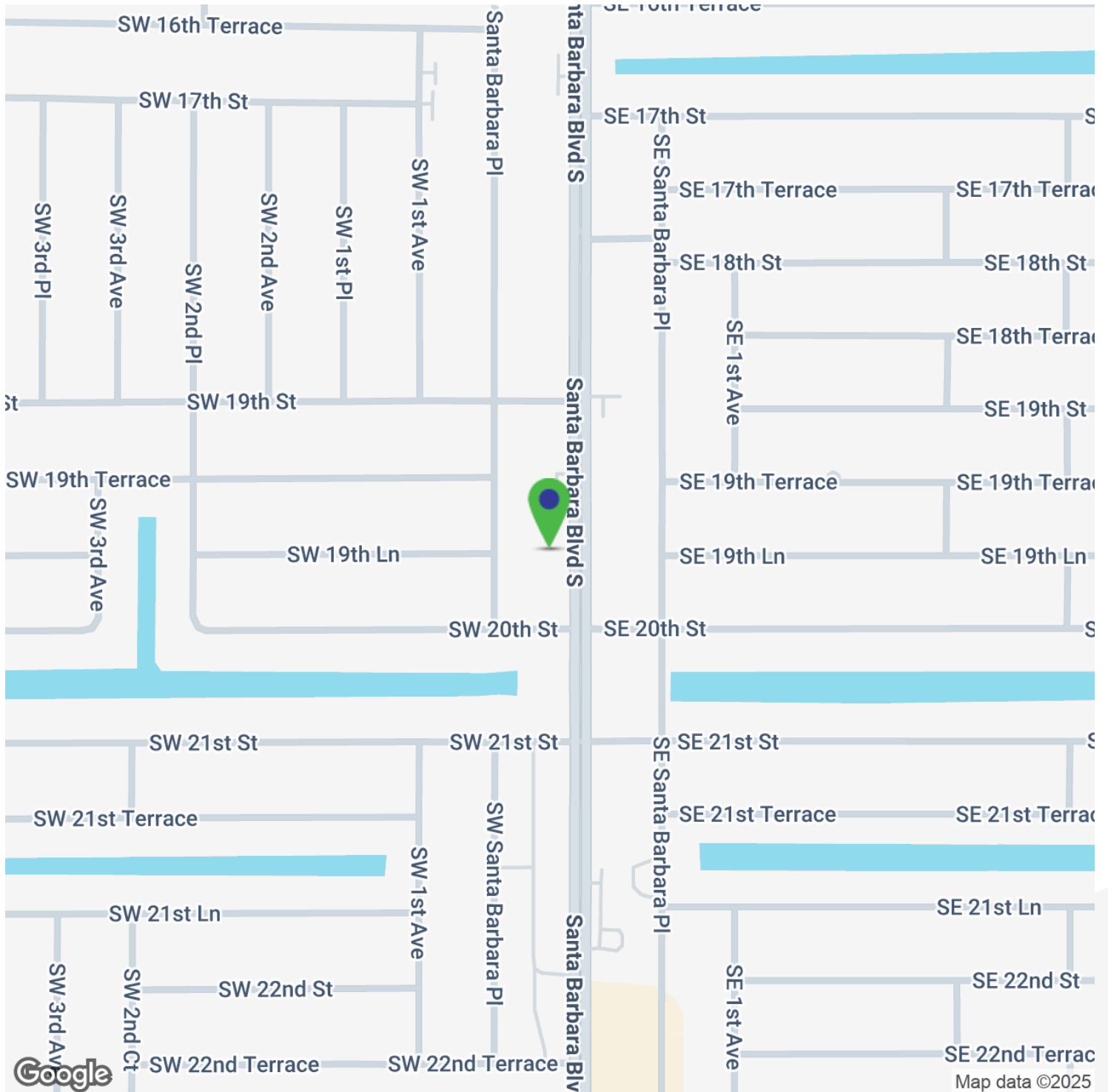
## Additional Photos



# 1928 SANTA BARBARA BLVD CAPE CORAL, FL 33991



## Location Map



**CARLOS ACOSTA, CCIM**  
239.823.0115  
cacosta@ccim.net

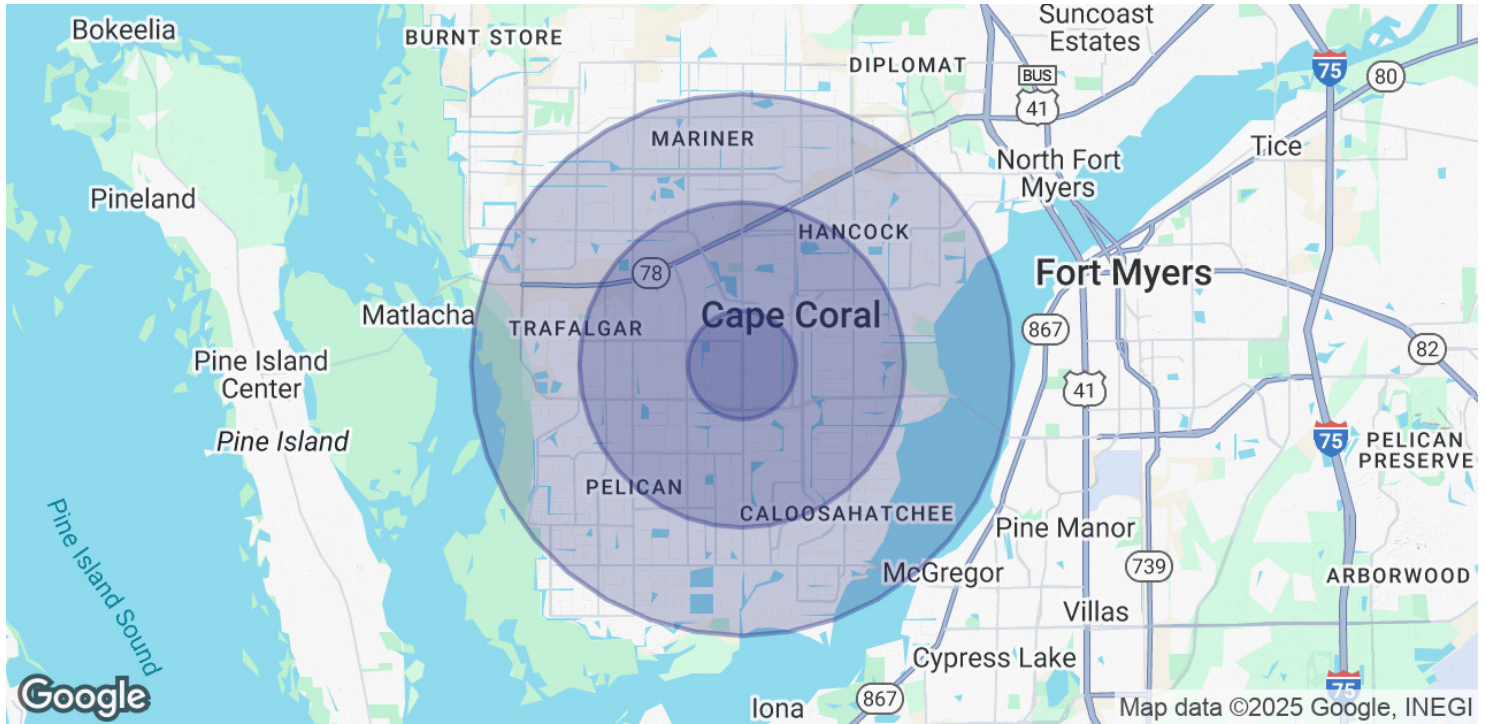
CRES Commercial Real Estate Services of SWFL, INC  
1490 NE Pine Island Rd Suite 6F • Cape Coral, FL 33909  
239.980.0081 • cresswfl.com



# 1928 SANTA BARBARA BLVD CAPE CORAL, FL 33991



## Demographics Map & Report



POPULATION	1 MILE	3 MILES	5 MILES
Total Population	8,861	63,274	130,862
Average Age	39.4	40.5	41.9
Average Age (Male)	35.7	38.2	40.5
Average Age (Female)	42.8	42.7	43.3

HOUSEHOLDS & INCOME	1 MILE	3 MILES	5 MILES
Total Households	3,076	23,325	50,416
# of Persons per HH	2.9	2.7	2.6
Average HH Income	\$63,048	\$60,678	\$61,572
Average House Value		\$233,959	\$237,208

\* Demographic data derived from 2020 ACS - US Census