

# BIODYNAMIC<sup>®</sup> CERTIFIED

±614 ACRES LOCATED  
IN STA RITA HILLS AVA,  
SANTA BARBARA COUNTY

3145 E. HWY 246 &  
2755 PURISIMA RD.

Offered at

**\$16,900,000**

PROPERTY VIDEO

[https://player.vimeo.com/  
video/764784146?h=5feba91b9e](https://player.vimeo.com/video/764784146?h=5feba91b9e)

JON OHLGREN  
805.689.7839  
[joblgren@radiusgroup.com](mailto:joblgren@radiusgroup.com)  
CA LIC. 01464358



RADIUSGROUP.COM

















# OFFERING SUMMARY

Offered at

**\$16,900,000**

Land Size

**±614.12 Acres**

\$/Acre

**\$27,520/AC**

## PROPERTY OVERVIEW

This property comprises two adjoining parcels situated between La Purisima Golf Course and La Purisima Mission State Historic Park, providing access and frontage along Highway 246, as well as Purisima Rd. and Cebada Canyon Road.

### **2755 PURISIMA RD • LOMPOC CA • DUVARITA PARCEL • APN: 099-131-023 • ±100 ACRES**

*±28 acres of vineyard planted mostly in 2000. Certified Biodynamic® just west of Sta. Rita Hills AVA.*

- ±16 AC of Pinot Noir
- ±7 AC of Chardonnay
- ±4 AC of Syrah
- Less than 1 AC of Viognier
- 2 bedroom, 2.5 bath house remodeled in 2014 with ±1,800 SF
- Pole barn (60' x 30') built in 2013
- One (1) well ±450 gpm
- Zoned AG II-100 and not enrolled in Williamson Act

*Approximately 10 additional acres are plantable.*

### **3145 E HWY 246 • LOMPOC CA • CHRISTY & WISE PARCEL • APN: 099-131-022 • ±514.12 ACRES**

*±37 acres of vineyard planted in 2016, ±14 acres of vineyards planted in 2019 which are in Sta. Rita Hills AVA, ±45 acres of row crop, and ±300 additional plantable acres of vineyard potential.*

- ±16 AC of Syrah
- ±11 AC of Pinot Noir
- ±14 AC of Grenache
- ±5 AC of Mourvèdre
- 2 bedroom, 1 bath house originally built in 1914 & completely remodeled in 2017 with ±950 SF
- Historic old barns
- Two (2) wells ±550 gpm & the other at ±650 gpm
- Zoned AG II-100 and not enrolled in Williamson Act

*The vineyard also includes a couple acres each of Graciano, Chardonnay and Viognier.*

© 5/23/25 Radius Group Commercial Real Estate, Inc. DRE lic. 01334755. All rights reserved. Content and/or images may not be used without permission. The information provided here has been obtained from the owner of the property or from other sources deemed reliable. We have no reason to doubt its accuracy, but we do not guarantee it.



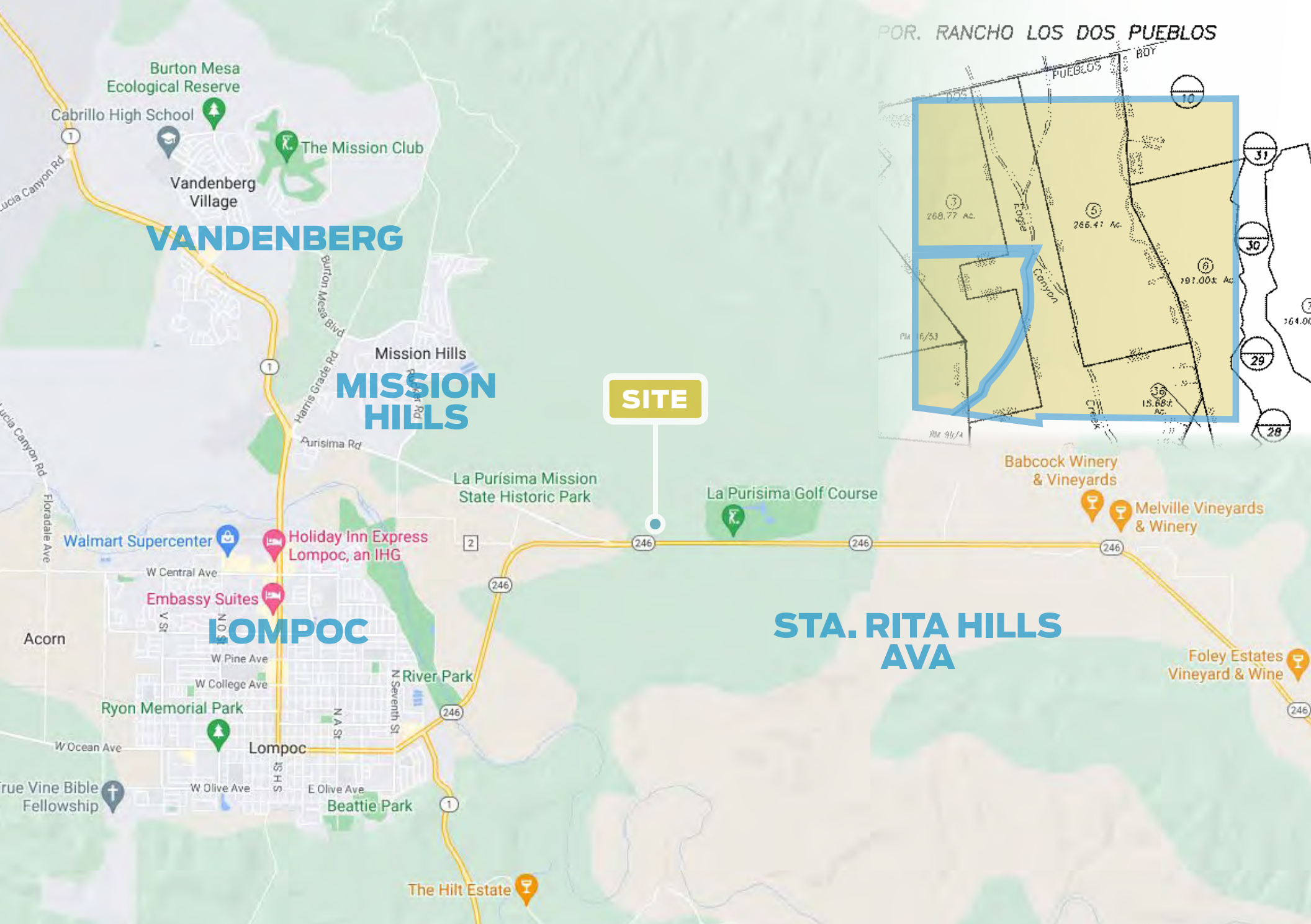
## AERIAL OVERVIEW



PROPERTY VIDEO

<https://player.vimeo.com/video/764784146?h=5feba91b9e>





© 5/23/25 Radius Group Commercial Real Estate, Inc. DRE lic. 01334755. All rights reserved. Content and/or images may not be used without permission.

The information provided here has been obtained from the owner of the property or from other sources deemed reliable. We have no reason to doubt its accuracy, but we do not guarantee it.



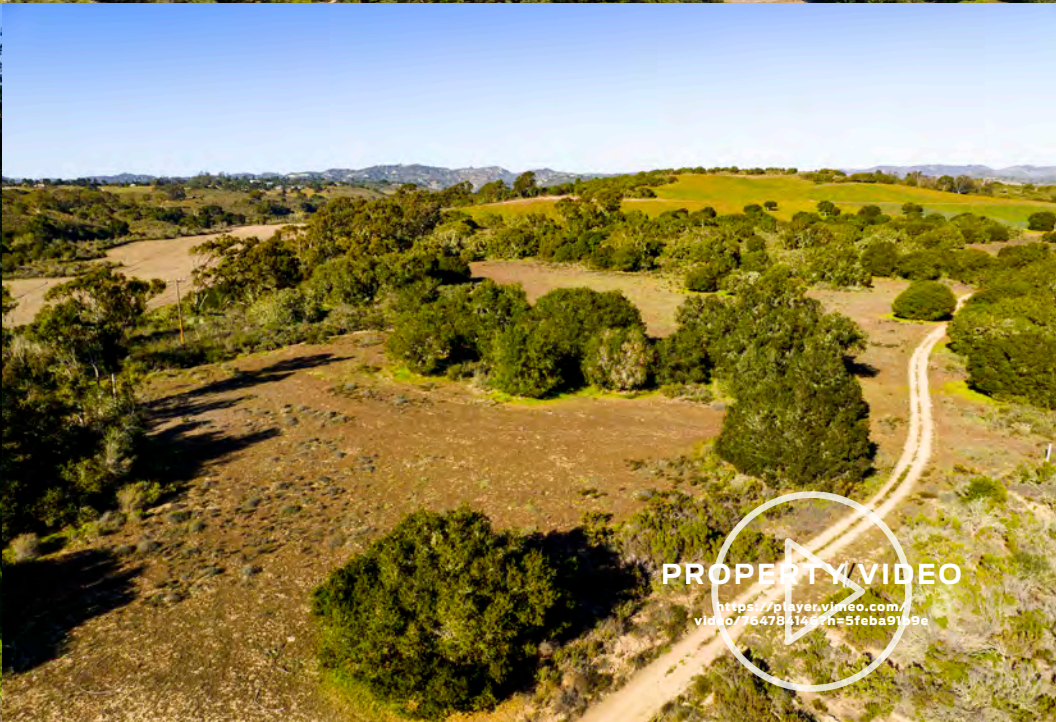


© 5/23/25 Radius Group Commercial Real Estate, Inc. DRE lic. 01334755. All rights reserved. Content and/or images may not be used without permission.  
The information provided here has been obtained from the owner of the property or from other sources deemed reliable. We have no reason to doubt its accuracy, but we do not guarantee it.



RADIUS RANCH VINEYARD & AGRICULTURAL PROPERTIES | JON OHLGREN | 805.689.7839 | CA LIC 01464358 | [RADIUSGROUP.COM](https://radiusgroup.com)





© 5/23/25 Radius Group Commercial Real Estate, Inc. DRE lic. 01334755. All rights reserved. Content and/or images may not be used without permission.  
The information provided here has been obtained from the owner of the property or from other sources deemed reliable. We have no reason to doubt its accuracy, but we do not guarantee it.



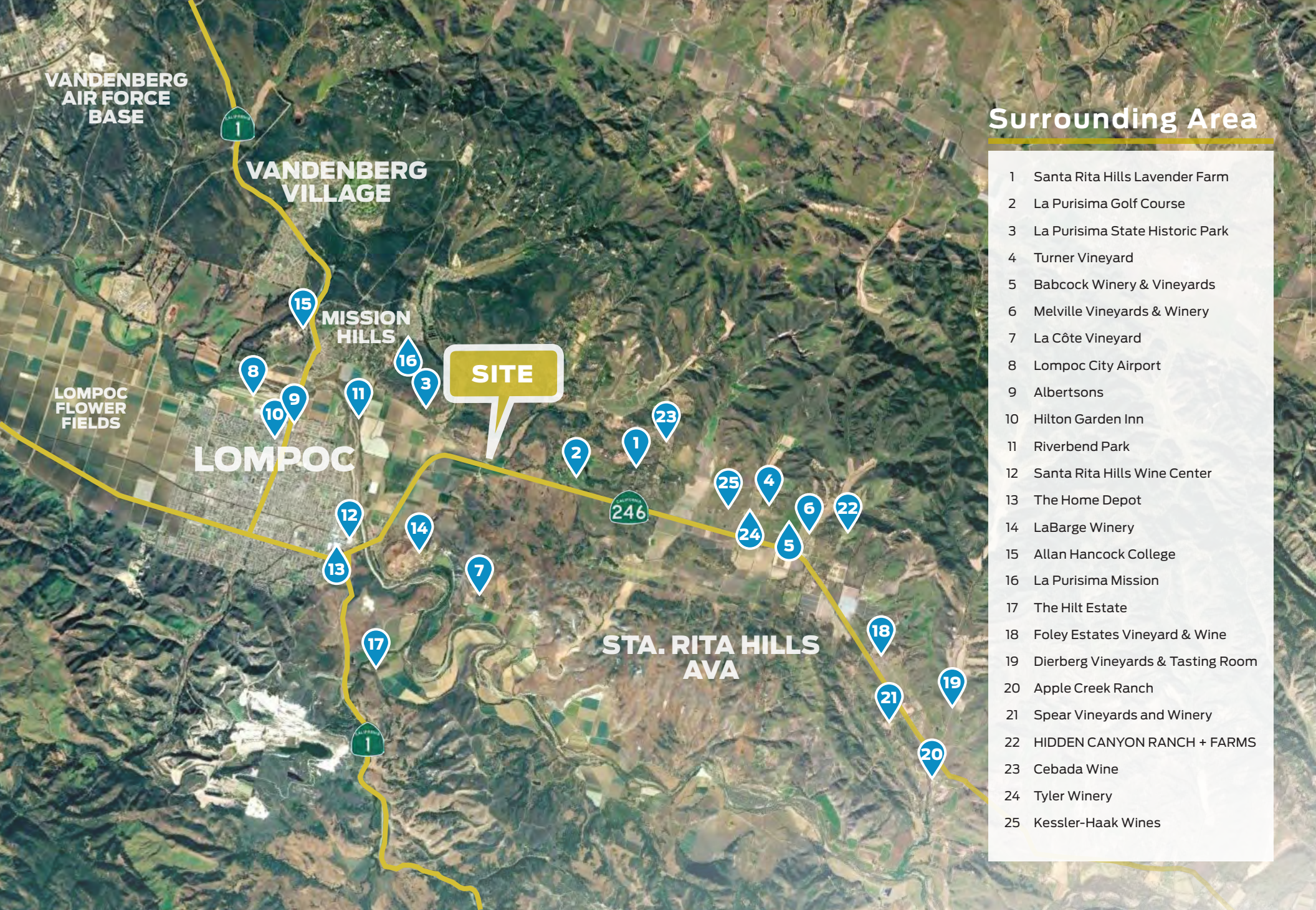


© 5/23/25 Radius Group Commercial Real Estate, Inc. DRE lic. 01334755. All rights reserved. Content and/or images may not be used without permission.  
The information provided here has been obtained from the owner of the property or from other sources deemed reliable. We have no reason to doubt its accuracy, but we do not guarantee it.



RADIUS RANCH VINEYARD & AGRICULTURAL PROPERTIES | JON OHLGREN | 805.689.7839 | CA LIC 01464358 | [RADIUSGROUP.COM](https://radiusgroup.com)





## Surrounding Area

- 1 Santa Rita Hills Lavender Farm
- 2 La Purisima Golf Course
- 3 La Purisima State Historic Park
- 4 Turner Vineyard
- 5 Babcock Winery & Vineyards
- 6 Melville Vineyards & Winery
- 7 La Côte Vineyard
- 8 Lompoc City Airport
- 9 Albertsons
- 10 Hilton Garden Inn
- 11 Riverbend Park
- 12 Santa Rita Hills Wine Center
- 13 The Home Depot
- 14 LaBarge Winery
- 15 Allan Hancock College
- 16 La Purisima Mission
- 17 The Hilt Estate
- 18 Foley Estates Vineyard & Wine
- 19 Dierberg Vineyards & Tasting Room
- 20 Apple Creek Ranch
- 21 Spear Vineyards and Winery
- 22 HIDDEN CANYON RANCH + FARMS
- 23 Cebada Wine
- 24 Tyler Winery
- 25 Kessler-Haak Wines

© 5/23/25 Radius Group Commercial Real Estate, Inc. DRE lic. 01334755. All rights reserved. Content and/or images may not be used without permission.  
The information provided here has been obtained from the owner of the property or from other sources deemed reliable. We have no reason to doubt its accuracy, but we do not guarantee it.





# CITY OF ARTS & FLOWERS

## LOMPOC • GATEWAY TO THE STA. RITA HILLS AVA

**Wine production and wine tourism comprise the rapidly expanding value-added agricultural sector of the Lompoc economy. The Lompoc Valley is considered the “Gateway to the Sta. Rita Hills AVA”, internationally recognized for premium pinot noir and chardonnay.**

Thirty premium boutique wine labels are produced in Lompoc at wineries in the affectionately termed “Lompoc Wine Ghetto”—a unique two-block industrial park located off of North Seventh Street on Chestnut Court—and at other locations across town. The complex offers world-class wine, presented in a laid back atmosphere, where, quite often, the person pouring the wine is also the person that made it.

Several other wineries are located along California State Route 246, linking Lompoc with Buellton, and on Santa Rosa Road. Lompoc hosts the Santa Barbara County Vintners’ Festival held at River Park in the spring, and enjoys world-wide acclaim as the “City of Arts and Flowers.” The flower seed capital is awash in colorful blooms throughout the warmer months and is home to more than 30 murals, mostly concentrated in Old Town.

Located on scenic Pacific Coast Highway, Lompoc is approximately 55 miles northwest of Santa Barbara, 155 miles northwest of Los Angeles and 270 miles southeast of San Francisco. The Pacific Ocean is roughly nine miles from town. The Lompoc Valley is a key part of the Central California region with a population of approximately 44,398. Vandenberg Air Force Base — a major regional employer — is 10 miles northwest of the City and is among the nation’s most important military and aerospace installations.







# BIODYNAMIC<sup>®</sup> CERTIFIED

±614 ACRES LOCATED  
IN STA RITA HILLS AVA,  
SANTA BARBARA COUNTY

**3145 E. HWY 246 &  
2755 PURISIMA RD.**

Offered at  
**\$16,900,000**

PROPERTY VIDEO

[https://player.vimeo.com/  
video/764784146?h=5feba91b9e](https://player.vimeo.com/video/764784146?h=5feba91b9e)

PRESENTED BY

**JON OHLGREN**

**805.689.7839**

[joblgren@radiusgroup.com](mailto:joblgren@radiusgroup.com)

CA Lic. 01464358

226 E. DE LA GUERRA ST. SUITE 100  
SANTA BARBARA CA 93101  
805.965.5500  
RADIUSGROUP.COM



© 5/23/25 Radius Group Commercial Real Estate, Inc. DRE Lic. 01334755. All rights reserved. Content and/or images may not be used without permission.  
The information provided here has been obtained from the owner of the property or from other sources deemed reliable. We have no reason to doubt its accuracy, but we do not guarantee it.

**RADIUSGROUP.COM**