



15894 HIGHWAY 17
P.O. BOX 56
HAMPSTEAD, NC 28443
910/270-5100 FAX: 910/270-5110

FOR SALE OR LEASE

WHITEVILLE PROFESSIONAL OFFICE



**705 JEFFERSON STREET
WHITEVILLE, NORTH CAROLINA**

This beautiful +/-1,394 square foot professional office facility is located one block from the hospital in fast growing Columbus County. Most recently medical, this facility has ample parking, flexible Office (I&I) zoning and frontage on Jefferson Street. Available immediately.

**CALL HENRY NADEAU
(910) 524-7184**

Commercial & Investment Real Estate Specialists

email: info@creativecommercial.biz
www.creativecommercial.biz



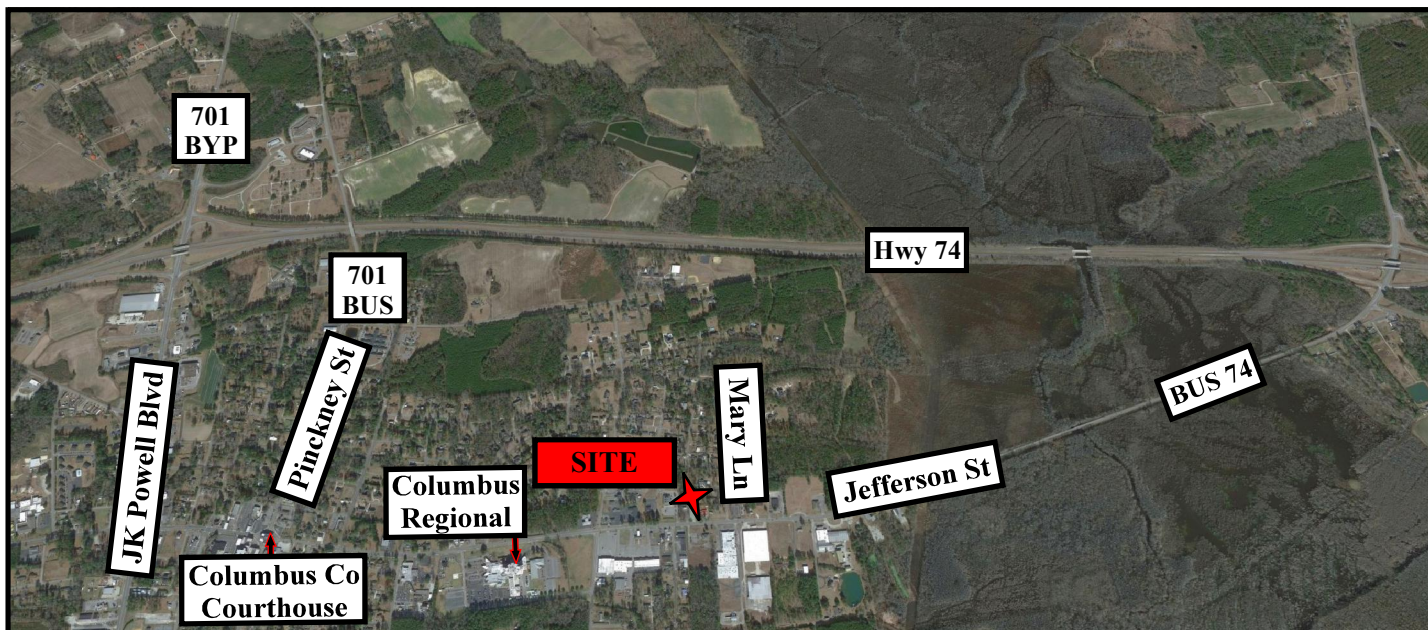
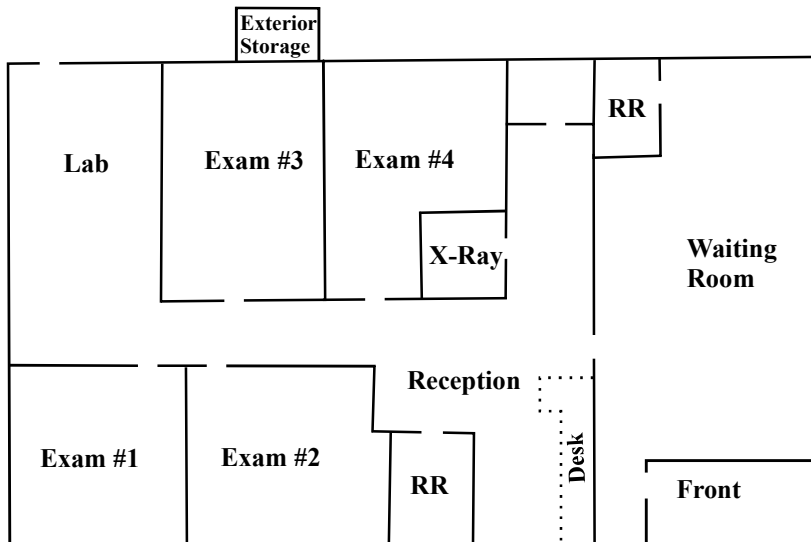
705 JEFFERSON STREET

THE FACILITY

- +/-1,394 Square Feet
- Fully Heated And Cooled (2 Units)
- Two Restrooms
- Five Private Offices
- Extensive Medical Upfit

THE LOT

- .45 Acres
- 110 Feet Of Frontage On Jefferson Street
- Property Described As Lot "A" Columbus County Map Book 107, Page 54
- Tax Parcel ID: 0291.00-44-1792.000



THE OFFERINGS

SALE
\$195,000

LEASE
\$2,000/Mo

Includes Property Taxes And Insurance

CREATIVE COMMERCIAL PROPERTIES, INC.

CALL

HENRY NADEAU
(910) 524-7184

Email:henry@creativecommercial.biz

www.creativecommercial.biz



Creative Commercial Properties, Inc. reasonably believes the information in this brochure is fairly and accurately stated. However, any prospective purchaser is urged to independently confirm its accuracy and completeness.