



**James Walker**  
 PROFESSIONAL ENGINEER  
 LICENSE NO. 1422  
 EXPIRES 02/18/2015  
 DRAWN BY: SG  
 SCALE: AS NOTED

THE ENGINEERING PROFESSION BOARD  
 OF THE STATE OF GEORGIA  
 1000 N. W. Peachtree Street, N.W.  
 Atlanta, Georgia 30309  
 (404) 527-2500  
 www.pboard.com

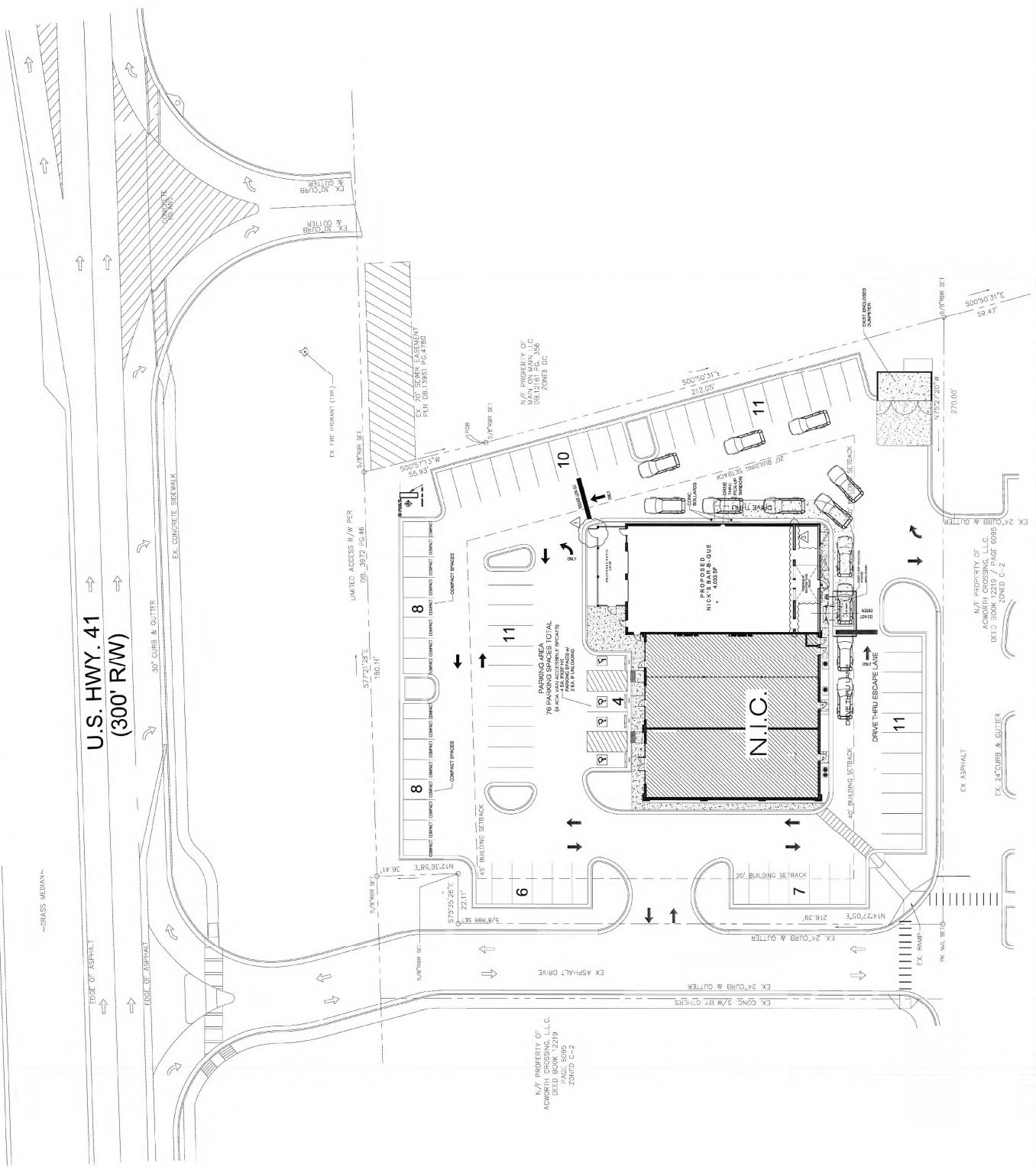
PROJECT NO.: 1422  
 DATE: 02/18/2015  
 DRAWN BY: SG  
 SCALE: AS NOTED

REVISIONS:  
 1. PER ARCHITECT COMMENTS  
 2. PER OWNER COMMENTS  
 3. PER CITY COMMENTS

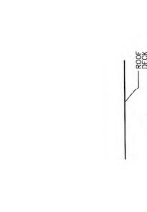
**SITE PLAN**

NICK'S BAR-B-QUE  
 3329 COBB PKWY NW, STE 400  
 ACWORTH, GA, 30101

**C101**



EXISTING SITE PLAN  
 SCALE: 1" = 20'-0"



THIS DRAWING PREPARED UNDER THE CLOSE SUPERVISION AND CONTROL OF THE PROFESSIONAL ENGINEER WHOSE NAME AND LICENSE NO. ARE SHOWN ON THIS DRAWING.

**James Baker**  
 1415 S. GARDNER  
 ATLANTA, GA 30310  
 TEL: 404.525.8899  
 WWW.JAMESBAKER.COM

REVISIONS:  
 1. REVISION 1: 02/18/2015  
 2. REVISION 2: 02/18/2015

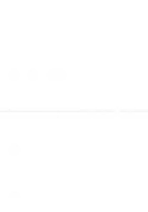
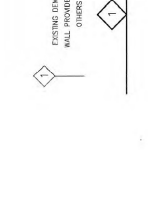
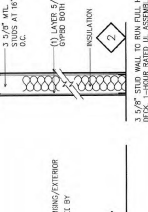
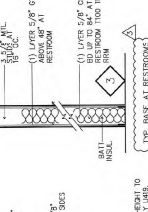
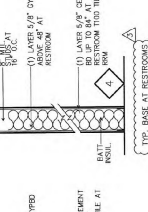
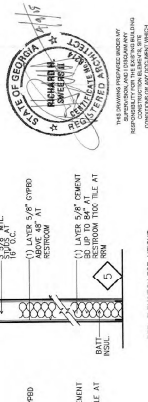
**FLOOR PLAN**  
 NICK'S BAR-B-QUE  
 329 COBB PKWY NW, STE 400  
 ACWORTH, GA, 30101

**A100**

PROJECT NO.: 1422  
 DATE: 02/18/2015  
 DRAWN BY: SG  
 SCALE: AS NOTED

REVISIONS:  
 1. REVISION 1: 02/18/2015  
 2. REVISION 2: 02/18/2015

**FLOOR PLAN**  
 NICK'S BAR-B-QUE  
 329 COBB PKWY NW, STE 400  
 ACWORTH, GA, 30101



**DOOR SCHEDULE**

REF.	DOOR	MATERIAL	SIZE	TYPE	FRAME	GROUP	NOTES
100	ENST	3'-0" x 8'-0"	-	EXISTING	EXISTING	4	EXISTING TO REMAIN
101	ENST	3'-0" x 8'-0"	-	EXISTING	EXISTING	4	EXISTING TO REMAIN
102	ENST	3'-0" x 7'-0"	A	EXISTING	SC WOOD DOOR + METAL FRAME	3	EXISTING TO REMAIN
103	ENST	3'-0" x 7'-0"	A	EXISTING	SEE NOTES	-	EXISTING TO REMAIN
104	ENST	3'-0" x 7'-0"	B	EXISTING	WOOD / FRAMED / FINISHED GLASS LITE	-	EXISTING TO REMAIN
105	ENST	3'-0" x 7'-0"	B	EXISTING	WOOD / FRAMED / FINISHED GLASS LITE	-	EXISTING TO REMAIN
106	ENST	3'-0" x 8'-0"	-	EXISTING	WOOD SILL & SAIL DOOR / FRAMED / FINISHED GLASS LITE	-	EXISTING TO REMAIN
107	ENST	10'-0" x 8'-0"	-	EXISTING	EXISTING	1	EXISTING TO REMAIN
108	ENST	10'-0" x 8'-0"	-	EXISTING	EXISTING	1	EXISTING TO REMAIN
109	ENST	3'-8" x 8'-0"	-	EXISTING	EXISTING	-	EXISTING TO REMAIN
110	ENST	3'-8" x 8'-0"	-	EXISTING	EXISTING	-	EXISTING TO REMAIN

**DOOR TYPES**

SCALE: 1/4" = 1'-0"

**DOOR HARDWARE**

(NOTE: DOOR PULLS/HANDLES SELECTED BY DESIGNER)

HOW GROUP #1: DOOR #07, #08 & #09  
 HARDWARE BY DOOR #07: 1 EA. COGNATE LOCKSET - TIES  
 2 EA. COGNATE

HOW GROUP #2: DOOR #10, #11 & #12  
 HARDWARE BY DOOR #10: 1 EA. COGNATE LOCKSET - TIES  
 2 EA. COGNATE

HOW GROUP #3: DOOR #13, #14 & #15  
 HARDWARE BY DOOR #13: 1 EA. COGNATE LOCKSET - TIES  
 2 EA. COGNATE

HOW GROUP #4: DOOR #16, #17 & #18  
 HARDWARE BY DOOR #16: 1 EA. COGNATE LOCKSET - TIES  
 2 EA. COGNATE

HOW GROUP #5: DOOR #19, #20 & #21  
 HARDWARE BY DOOR #19: 1 EA. COGNATE LOCKSET - TIES  
 2 EA. COGNATE

**LEGEND**

XXX DOOR TAG  
 X DOOR TAG  
 O DOOR TAG  
 □ DOOR TAG

DOOR TAG  
 ○ DOOR TAG  
 □ DOOR TAG

DOOR TAG  
 ○ DOOR TAG  
 □ DOOR TAG

DOOR TAG  
 ○ DOOR TAG  
 □ DOOR TAG

**DOOR TYPES**

SCALE: 1/4" = 1'-0"

**DOOR HARDWARE**

(NOTE: DOOR PULLS/HANDLES SELECTED BY DESIGNER)

HOW GROUP #1: DOOR #07, #08 & #09  
 HARDWARE BY DOOR #07: 1 EA. COGNATE LOCKSET - TIES  
 2 EA. COGNATE

HOW GROUP #2: DOOR #10, #11 & #12  
 HARDWARE BY DOOR #10: 1 EA. COGNATE LOCKSET - TIES  
 2 EA. COGNATE

HOW GROUP #3: DOOR #13, #14 & #15  
 HARDWARE BY DOOR #13: 1 EA. COGNATE LOCKSET - TIES  
 2 EA. COGNATE

HOW GROUP #4: DOOR #16, #17 & #18  
 HARDWARE BY DOOR #16: 1 EA. COGNATE LOCKSET - TIES  
 2 EA. COGNATE

HOW GROUP #5: DOOR #19, #20 & #21  
 HARDWARE BY DOOR #19: 1 EA. COGNATE LOCKSET - TIES  
 2 EA. COGNATE

**LEGEND**

XXX DOOR TAG  
 X DOOR TAG  
 O DOOR TAG  
 □ DOOR TAG

DOOR TAG  
 ○ DOOR TAG  
 □ DOOR TAG

DOOR TAG  
 ○ DOOR TAG  
 □ DOOR TAG

DOOR TAG  
 ○ DOOR TAG  
 □ DOOR TAG

**DOOR TYPES**

SCALE: 1/4" = 1'-0"

**DOOR HARDWARE**

(NOTE: DOOR PULLS/HANDLES SELECTED BY DESIGNER)

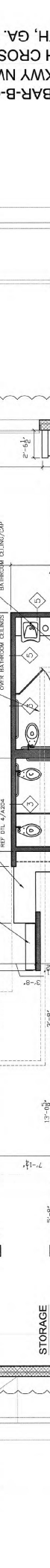
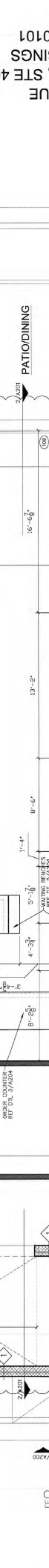
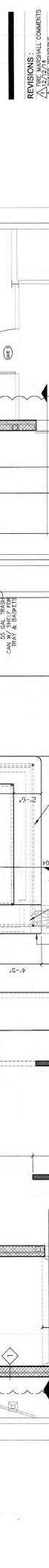
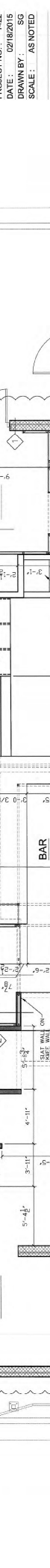
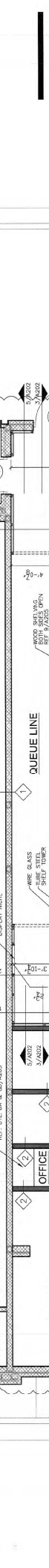
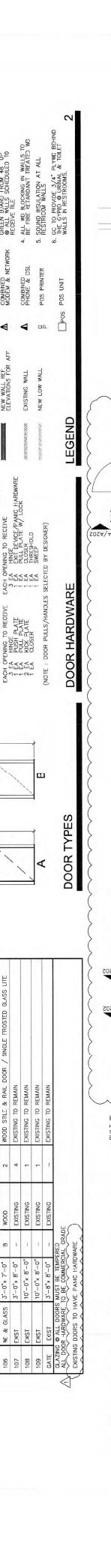
HOW GROUP #1: DOOR #07, #08 & #09  
 HARDWARE BY DOOR #07: 1 EA. COGNATE LOCKSET - TIES  
 2 EA. COGNATE

HOW GROUP #2: DOOR #10, #11 & #12  
 HARDWARE BY DOOR #10: 1 EA. COGNATE LOCKSET - TIES  
 2 EA. COGNATE

HOW GROUP #3: DOOR #13, #14 & #15  
 HARDWARE BY DOOR #13: 1 EA. COGNATE LOCKSET - TIES  
 2 EA. COGNATE

HOW GROUP #4: DOOR #16, #17 & #18  
 HARDWARE BY DOOR #16: 1 EA. COGNATE LOCKSET - TIES  
 2 EA. COGNATE

HOW GROUP #5: DOOR #19, #20 & #21  
 HARDWARE BY DOOR #19: 1 EA. COGNATE LOCKSET - TIES  
 2 EA. COGNATE



SCALE: 1/4" = 1'-0"

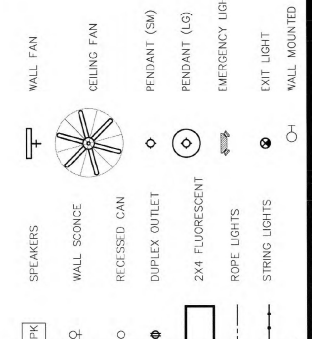
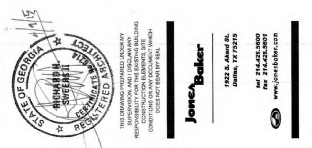
FLOOR PLAN

NICK'S BAR-B-QUE  
 329 COBB PKWY NW, STE 400  
 ACWORTH, GA, 30101

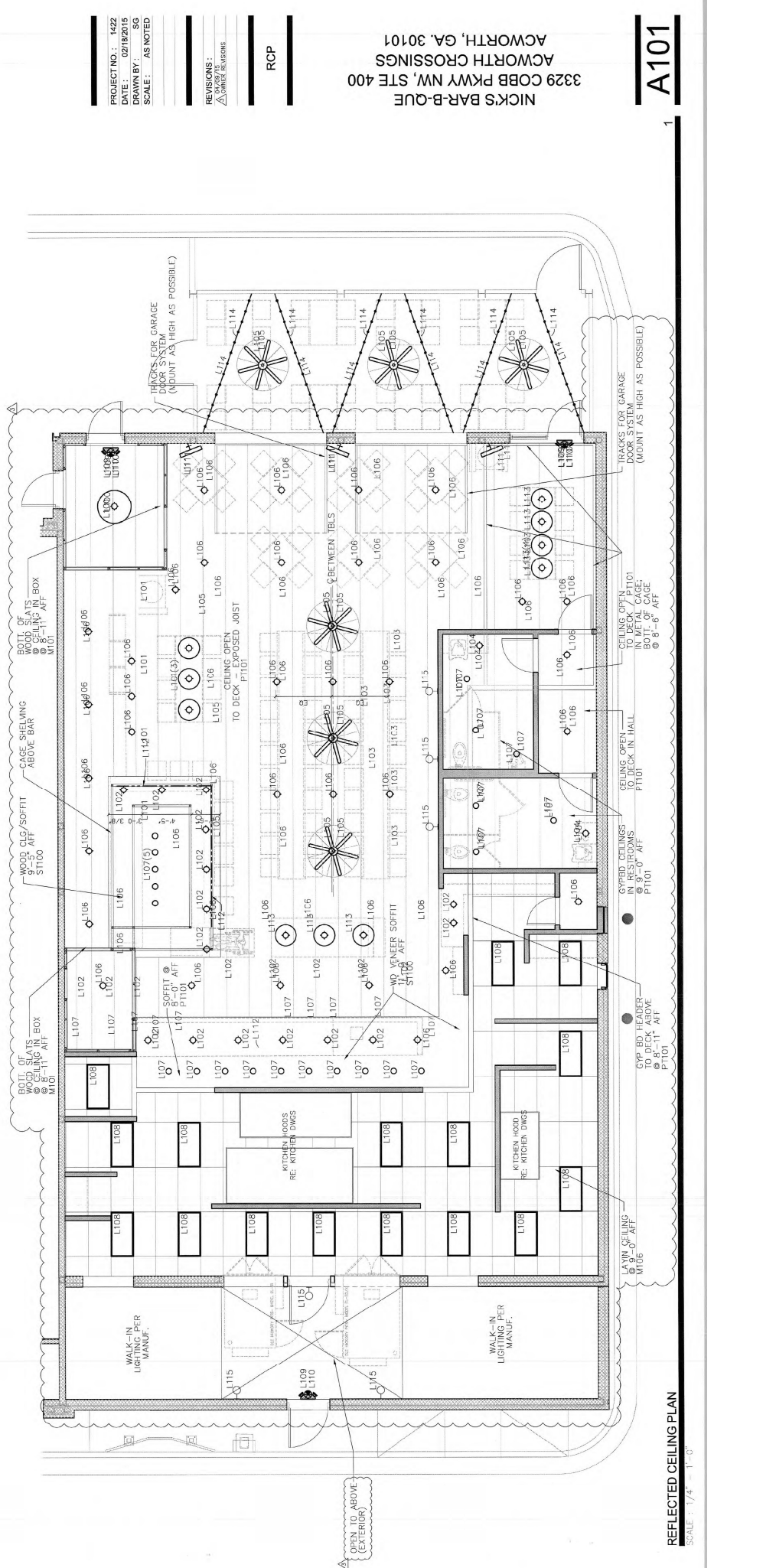
A100

**LIGHT FIXTURE SCHEDULE**

REF.	DESCRIPTION	PRODUCT INFORMATION	LAMPING	VENDOR	SUPPLIED BY
L100	FINISH: W/ FINISH	CUSTOM PENDANT - METAL CASE / 3FT. DIA. / 150" HGT. / CONDUIT W/ DESIGNER	40W (40)	N/A, WALLS, PARTS, CONDUIT, GLOBAL LIGHTING	OC / CC
L101	FINISH: W/ FINISH	CEILING LIGHT - METAL CASE / 150" HGT. / CONDUIT W/ DESIGNER	150W (150)	GLOBAL LIGHTING	OC / CC
L102	FINISH: W/ FINISH	TRAY LIGHTING	150W (150)	TRAY LIGHTING	OC / CC
L103	TRAY LIGHTING	TRAY LIGHTING	N/A	TRAY LIGHTING	OC / CC
L104	TRAY LIGHTING	SHADES OF LIGHT	60W (60)	SHADES OF LIGHT	OC / CC
L105	TRAY LIGHTING	TRAY LIGHTING	N/A	TRAY LIGHTING	OC / CC
L106	TRAY LIGHTING	TRAY LIGHTING	N/A	TRAY LIGHTING	OC / CC
L107	TRAY LIGHTING	TRAY LIGHTING	N/A	TRAY LIGHTING	OC / CC
L108	TRAY LIGHTING	TRAY LIGHTING	N/A	TRAY LIGHTING	OC / CC
L109	TRAY LIGHTING	TRAY LIGHTING	N/A	TRAY LIGHTING	OC / CC
L110	TRAY LIGHTING	TRAY LIGHTING	N/A	TRAY LIGHTING	OC / CC
L111	TRAY LIGHTING	TRAY LIGHTING	N/A	TRAY LIGHTING	OC / CC
L112	TRAY LIGHTING	TRAY LIGHTING	N/A	TRAY LIGHTING	OC / CC
L113	TRAY LIGHTING	TRAY LIGHTING	N/A	TRAY LIGHTING	OC / CC
L114	TRAY LIGHTING	TRAY LIGHTING	N/A	TRAY LIGHTING	OC / CC
L115	TRAY LIGHTING	TRAY LIGHTING	N/A	TRAY LIGHTING	OC / CC
L116	TRAY LIGHTING	TRAY LIGHTING	N/A	TRAY LIGHTING	OC / CC
L117	TRAY LIGHTING	TRAY LIGHTING	N/A	TRAY LIGHTING	OC / CC
L118	TRAY LIGHTING	TRAY LIGHTING	N/A	TRAY LIGHTING	OC / CC
L119	TRAY LIGHTING	TRAY LIGHTING	N/A	TRAY LIGHTING	OC / CC
L120	TRAY LIGHTING	TRAY LIGHTING	N/A	TRAY LIGHTING	OC / CC
L121	TRAY LIGHTING	TRAY LIGHTING	N/A	TRAY LIGHTING	OC / CC
L122	TRAY LIGHTING	TRAY LIGHTING	N/A	TRAY LIGHTING	OC / CC
L123	TRAY LIGHTING	TRAY LIGHTING	N/A	TRAY LIGHTING	OC / CC
L124	TRAY LIGHTING	TRAY LIGHTING	N/A	TRAY LIGHTING	OC / CC
L125	TRAY LIGHTING	TRAY LIGHTING	N/A	TRAY LIGHTING	OC / CC
L126	TRAY LIGHTING	TRAY LIGHTING	N/A	TRAY LIGHTING	OC / CC
L127	TRAY LIGHTING	TRAY LIGHTING	N/A	TRAY LIGHTING	OC / CC
L128	TRAY LIGHTING	TRAY LIGHTING	N/A	TRAY LIGHTING	OC / CC
L129	TRAY LIGHTING	TRAY LIGHTING	N/A	TRAY LIGHTING	OC / CC
L130	TRAY LIGHTING	TRAY LIGHTING	N/A	TRAY LIGHTING	OC / CC
L131	TRAY LIGHTING	TRAY LIGHTING	N/A	TRAY LIGHTING	OC / CC
L132	TRAY LIGHTING	TRAY LIGHTING	N/A	TRAY LIGHTING	OC / CC
L133	TRAY LIGHTING	TRAY LIGHTING	N/A	TRAY LIGHTING	OC / CC
L134	TRAY LIGHTING	TRAY LIGHTING	N/A	TRAY LIGHTING	OC / CC
L135	TRAY LIGHTING	TRAY LIGHTING	N/A	TRAY LIGHTING	OC / CC
L136	TRAY LIGHTING	TRAY LIGHTING	N/A	TRAY LIGHTING	OC / CC
L137	TRAY LIGHTING	TRAY LIGHTING	N/A	TRAY LIGHTING	OC / CC
L138	TRAY LIGHTING	TRAY LIGHTING	N/A	TRAY LIGHTING	OC / CC
L139	TRAY LIGHTING	TRAY LIGHTING	N/A	TRAY LIGHTING	OC / CC
L140	TRAY LIGHTING	TRAY LIGHTING	N/A	TRAY LIGHTING	OC / CC
L141	TRAY LIGHTING	TRAY LIGHTING	N/A	TRAY LIGHTING	OC / CC
L142	TRAY LIGHTING	TRAY LIGHTING	N/A	TRAY LIGHTING	OC / CC
L143	TRAY LIGHTING	TRAY LIGHTING	N/A	TRAY LIGHTING	OC / CC
L144	TRAY LIGHTING	TRAY LIGHTING	N/A	TRAY LIGHTING	OC / CC
L145	TRAY LIGHTING	TRAY LIGHTING	N/A	TRAY LIGHTING	OC / CC
L146	TRAY LIGHTING	TRAY LIGHTING	N/A	TRAY LIGHTING	OC / CC
L147	TRAY LIGHTING	TRAY LIGHTING	N/A	TRAY LIGHTING	OC / CC
L148	TRAY LIGHTING	TRAY LIGHTING	N/A	TRAY LIGHTING	OC / CC
L149	TRAY LIGHTING	TRAY LIGHTING	N/A	TRAY LIGHTING	OC / CC
L150	TRAY LIGHTING	TRAY LIGHTING	N/A	TRAY LIGHTING	OC / CC



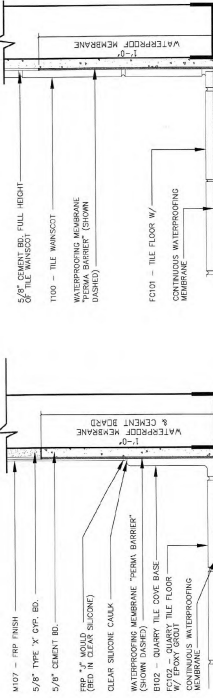
- GENERAL LIGHTING NOTES**
1. ALL SHEETROCK CEILINGS TO BE HUNG ON LIGS - DRYWALL SUSPENSION SYSTEM
  2. ALL SHEETROCK CEILINGS TO BE HUNG ON LIGS - DRYWALL SUSPENSION SYSTEM
  3. ALL SHEETROCK CEILINGS TO BE HUNG ON LIGS - DRYWALL SUSPENSION SYSTEM
  4. ALL SHEETROCK CEILINGS TO BE HUNG ON LIGS - DRYWALL SUSPENSION SYSTEM
  5. ALL SHEETROCK CEILINGS TO BE HUNG ON LIGS - DRYWALL SUSPENSION SYSTEM
  6. ALL SHEETROCK CEILINGS TO BE HUNG ON LIGS - DRYWALL SUSPENSION SYSTEM
  7. ALL SHEETROCK CEILINGS TO BE HUNG ON LIGS - DRYWALL SUSPENSION SYSTEM
  8. ALL SHEETROCK CEILINGS TO BE HUNG ON LIGS - DRYWALL SUSPENSION SYSTEM
  9. ALL SHEETROCK CEILINGS TO BE HUNG ON LIGS - DRYWALL SUSPENSION SYSTEM
  10. ALL SHEETROCK CEILINGS TO BE HUNG ON LIGS - DRYWALL SUSPENSION SYSTEM
  11. ALL SHEETROCK CEILINGS TO BE HUNG ON LIGS - DRYWALL SUSPENSION SYSTEM
  12. ALL SHEETROCK CEILINGS TO BE HUNG ON LIGS - DRYWALL SUSPENSION SYSTEM
  13. ALL SHEETROCK CEILINGS TO BE HUNG ON LIGS - DRYWALL SUSPENSION SYSTEM
  14. ALL SHEETROCK CEILINGS TO BE HUNG ON LIGS - DRYWALL SUSPENSION SYSTEM
  15. ALL SHEETROCK CEILINGS TO BE HUNG ON LIGS - DRYWALL SUSPENSION SYSTEM
  16. ALL SHEETROCK CEILINGS TO BE HUNG ON LIGS - DRYWALL SUSPENSION SYSTEM
  17. ALL SHEETROCK CEILINGS TO BE HUNG ON LIGS - DRYWALL SUSPENSION SYSTEM
  18. ALL SHEETROCK CEILINGS TO BE HUNG ON LIGS - DRYWALL SUSPENSION SYSTEM
  19. ALL SHEETROCK CEILINGS TO BE HUNG ON LIGS - DRYWALL SUSPENSION SYSTEM
  20. ALL SHEETROCK CEILINGS TO BE HUNG ON LIGS - DRYWALL SUSPENSION SYSTEM



NICK'S BAR-B-QUE  
3229 COBB PKWY NW, STE 400  
ACWORTH, GA, 30101

**A101**

REF	DESCRIPTION	PRODUCT INFORMATION	FINISH SCHEDULE	INSTALL BY / SUPPLIED BY /
F100	FLOORING			
F101	GRAND			
F102	QUARRY			
F103	WOOD BASE			
F104	WOOD BASE			
F105	WOOD BASE			
F106	WOOD BASE			
F107	WOOD BASE			
F108	WOOD BASE			
F109	WOOD BASE			
F110	WOOD BASE			
F111	WOOD BASE			
F112	WOOD BASE			
F113	WOOD BASE			
F114	WOOD BASE			
F115	WOOD BASE			
F116	WOOD BASE			
F117	WOOD BASE			
F118	WOOD BASE			
F119	WOOD BASE			
F120	WOOD BASE			
F121	WOOD BASE			
F122	WOOD BASE			
F123	WOOD BASE			
F124	WOOD BASE			
F125	WOOD BASE			
F126	WOOD BASE			
F127	WOOD BASE			
F128	WOOD BASE			
F129	WOOD BASE			
F130	WOOD BASE			
F131	WOOD BASE			
F132	WOOD BASE			
F133	WOOD BASE			
F134	WOOD BASE			
F135	WOOD BASE			
F136	WOOD BASE			
F137	WOOD BASE			
F138	WOOD BASE			
F139	WOOD BASE			
F140	WOOD BASE			
F141	WOOD BASE			
F142	WOOD BASE			
F143	WOOD BASE			
F144	WOOD BASE			
F145	WOOD BASE			
F146	WOOD BASE			
F147	WOOD BASE			
F148	WOOD BASE			
F149	WOOD BASE			
F150	WOOD BASE			
F151	WOOD BASE			
F152	WOOD BASE			
F153	WOOD BASE			
F154	WOOD BASE			
F155	WOOD BASE			
F156	WOOD BASE			
F157	WOOD BASE			
F158	WOOD BASE			
F159	WOOD BASE			
F160	WOOD BASE			
F161	WOOD BASE			
F162	WOOD BASE			
F163	WOOD BASE			
F164	WOOD BASE			
F165	WOOD BASE			
F166	WOOD BASE			
F167	WOOD BASE			
F168	WOOD BASE			
F169	WOOD BASE			
F170	WOOD BASE			
F171	WOOD BASE			
F172	WOOD BASE			
F173	WOOD BASE			
F174	WOOD BASE			
F175	WOOD BASE			
F176	WOOD BASE			
F177	WOOD BASE			
F178	WOOD BASE			
F179	WOOD BASE			
F180	WOOD BASE			
F181	WOOD BASE			
F182	WOOD BASE			
F183	WOOD BASE			
F184	WOOD BASE			
F185	WOOD BASE			
F186	WOOD BASE			
F187	WOOD BASE			
F188	WOOD BASE			
F189	WOOD BASE			
F190	WOOD BASE			
F191	WOOD BASE			
F192	WOOD BASE			
F193	WOOD BASE			
F194	WOOD BASE			
F195	WOOD BASE			
F196	WOOD BASE			
F197	WOOD BASE			
F198	WOOD BASE			
F199	WOOD BASE			
F200	WOOD BASE			



REF	DESCRIPTION	SUPPLIED BY /
F100	WOOD COMBINATION TABLE	OWNER / GC
F101	WOOD COMBINATION TABLE	OWNER / GC
F102	WOOD COMBINATION TABLE	OWNER / GC
F103	WOOD COMBINATION TABLE	OWNER / GC
F104	WOOD COMBINATION TABLE	OWNER / GC
F105	WOOD COMBINATION TABLE	OWNER / GC
F106	WOOD COMBINATION TABLE	OWNER / GC
F107	WOOD COMBINATION TABLE	OWNER / GC
F108	WOOD COMBINATION TABLE	OWNER / GC
F109	WOOD COMBINATION TABLE	OWNER / GC
F110	WOOD COMBINATION TABLE	OWNER / GC
F111	WOOD COMBINATION TABLE	OWNER / GC

2 TYP. BASE AT KITCHEN SCALE: 1/4" = 1'-0"

3 TYP. BASE AT RESTROOM SCALE: 1/4" = 1'-0"

APPROVED FOR THE PROJECT

APPROVED FOR THE PROJECT

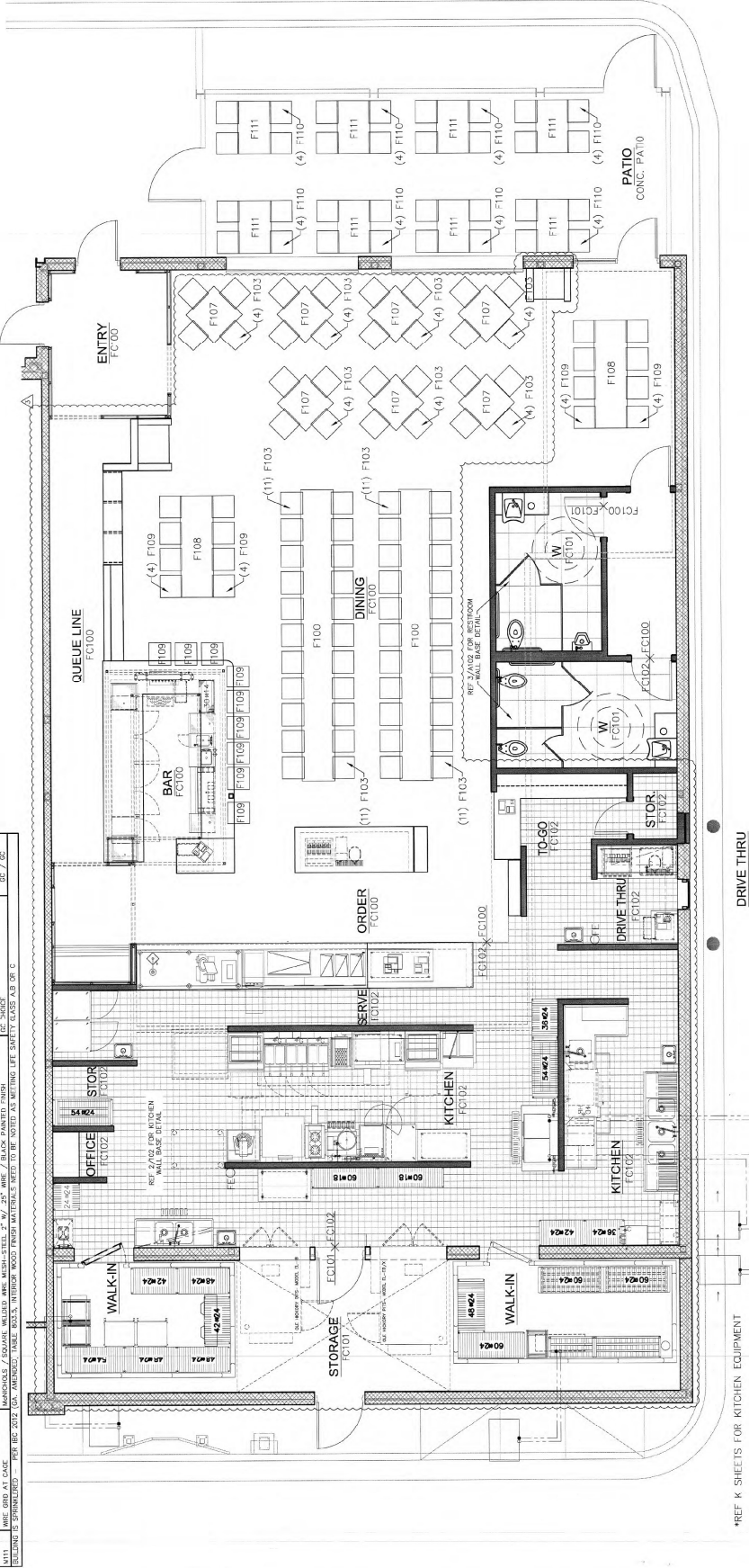
PROJECT NO.: 1422  
DATE: 02/18/2015  
DRAWN BY: SG  
SCALE: AS NOTED

REVISIONS:

FURNITURE & EQUIPMENT PLAN

NICK'S BAR-B-QUE  
ACWORTH CROSSINGS  
3329 COBB PKWY NW, STE 400  
ACWORTH, GA, 30101

Jones & Baker  
200 S. Peachtree Street, Suite 2000  
Atlanta, GA 30334  
Tel: 404.525.8800  
Fax: 404.525.8800  
www.jonesandbaker.com



\*REF. K SHEETS FOR KITCHEN EQUIPMENT FURNITURE & EQUIPMENT PLAN SCALE: 1/4" = 1'-0"