

For Sub-Lease

1345 BENNETT DRIVE, LONGWOOD, FL 32750

16,800 SF AVAILABLE

1345 Bennett Drive
LONGWOOD, FL

BUILDING SIZE
16,800 SF

PROPERTY OVERVIEW

BUILDING SIZE	16,800 SF
PARCEL SIZE	2.93 Acres
OFFICE SPACE	LIMITED
CLEAR HEIGHT	15' - 19'4"
DOCK DOORS	6
BUILDING DIMENSIONS	80'S X 210'W
ZONING	High Industrial
DOCK	Front Load
POWER	3-phase power
CONSTRUCTION	Metal Construction
BUILT	1985/1995
SECURITY	Fenced, Secured Truck Court

SUB-LEASE DETAILS

RATE	\$12.00 SF plus utilities
AVAILABILITY	Now thru October 31, 2026

HIGHLIGHTS

- Less than 1 minute drive to UPS Ship Center, FedEx Ship Center, and US Post Office.
- Less than 10 minutes to Interstate 4, US Highway 17-92, State Road 434, and State Road 436
- Area amenities include Altamonte Mall, Seminole Towne Center, AdventHealth, Red Bug Lake Park, and Timacuan Club
- Approximately 20 minutes to Orlando-Sanford International Airport and 35 minutes to Orlando International Airport, Orange County Convention Center, and most major theme parks including Universal Studios Florida and Sea World

FOR MORE INFORMATION, PLEASE CONTACT:

JP Beaulieu, CCIM, CLS
407.863.2966
Principal
JP@AtriumCommercial.com

ATRIUM | COMMERCIAL
REAL ESTATE

ATRIUMCOMMERCIAL.COM

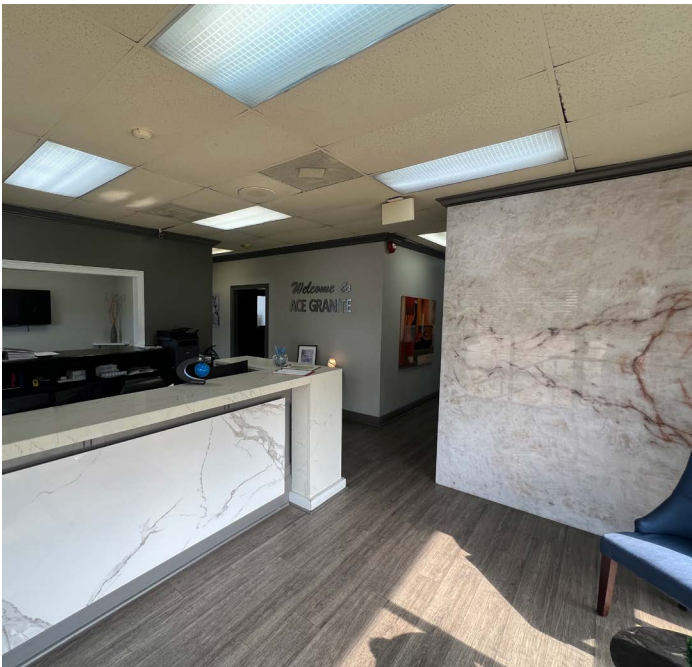
The information contained herein has been provided by sources believed to be reliable, however Atrium Commercial Real Estate makes no representation, expressed or implied, as to its accuracy and said information is subject to errors, omissions, or changes.



31,500 SF TOTAL ON 2.93 ACRES AVAILABLE

1345 BENNETT DRIVE, LONGWOOD, FL 32750

PHOTOS



FOR MORE INFORMATION, PLEASE CONTACT:

JP Beaulieu, CCIM, CLS
407.863.2966
Principal
JP@AtriumCommercial.com

ATRIUM | COMMERCIAL
REAL ESTATE

ATRIUMCOMMERCIAL.COM

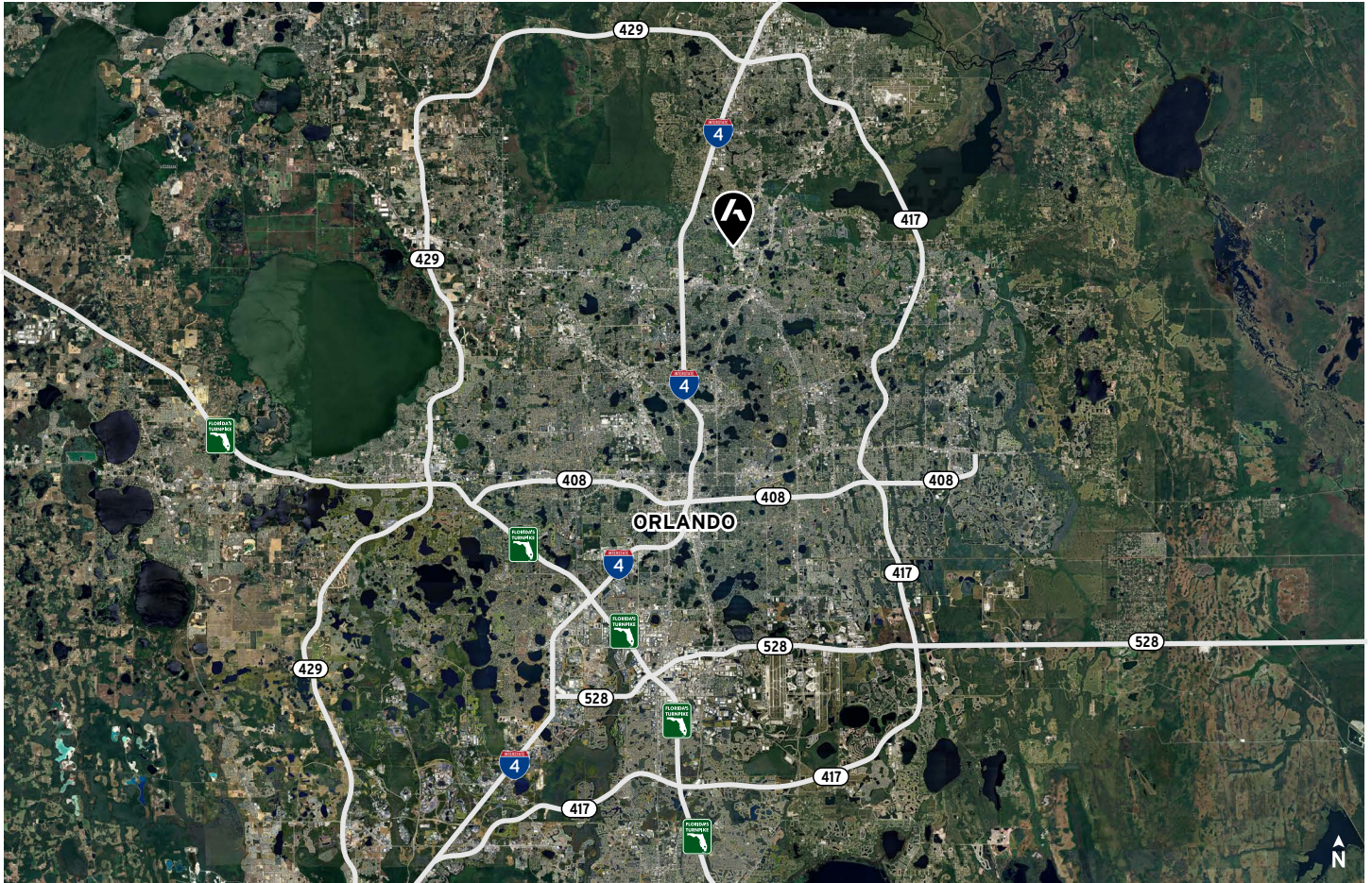
The information contained herein has been provided by sources believed to be reliable, however Atrium Commercial Real Estate makes no representation, expressed or implied, as to its accuracy and said information is subject to errors, omissions, or changes.



31,500 SF TOTAL ON 2.93 ACRES AVAILABLE

1345 BENNETT DRIVE, LONGWOOD, FL 32750

LOCATION



DRIVE TIME TO

Interstate 4	7 minutes
State Road 417	17 minutes
State Road 408	18 minutes
State Road 429	22 minutes
Florida's Turnpike	23 minutes
State Road 528	27 minutes

DISTANCE TO

Tampa	97 miles
Jacksonville	132 miles
Miami	248 miles
Atlanta, GA	451 miles

FOR MORE INFORMATION, PLEASE CONTACT:

JP Beaulieu, CCIM, CLS
407.863.2966
Principal
JP@AtriumCommercial.com

ATRIUM | COMMERCIAL
REAL ESTATE

ATRIUMCOMMERCIAL.COM

The information contained herein has been provided by sources believed to be reliable, however Atrium Commercial Real Estate makes no representation, expressed or implied, as to its accuracy and said information is subject to errors, omissions, or changes.