



2377 US Highway 52 S

2377 US Highway 52 S, Wadesboro, NC 28170



Eshan Narang
Narang Property Group
100 Franklin St, Bristol, CT 06010
rishi@narangpropertygroup.com
(203) 209-5447



2377 US Highway 52 S

\$3.95 /SF/YR

Industrial property suitable for warehouse, distribution and/or light manufacturing. Located directly on US Highway 52 South with gated and fenced yard....

- Excellent for Warehouse, Distribution or Light Manufacturing
- 5 loading docks
- Highly Visible Location - Directly on Highway 52 South
- Gated and Fenced Yard



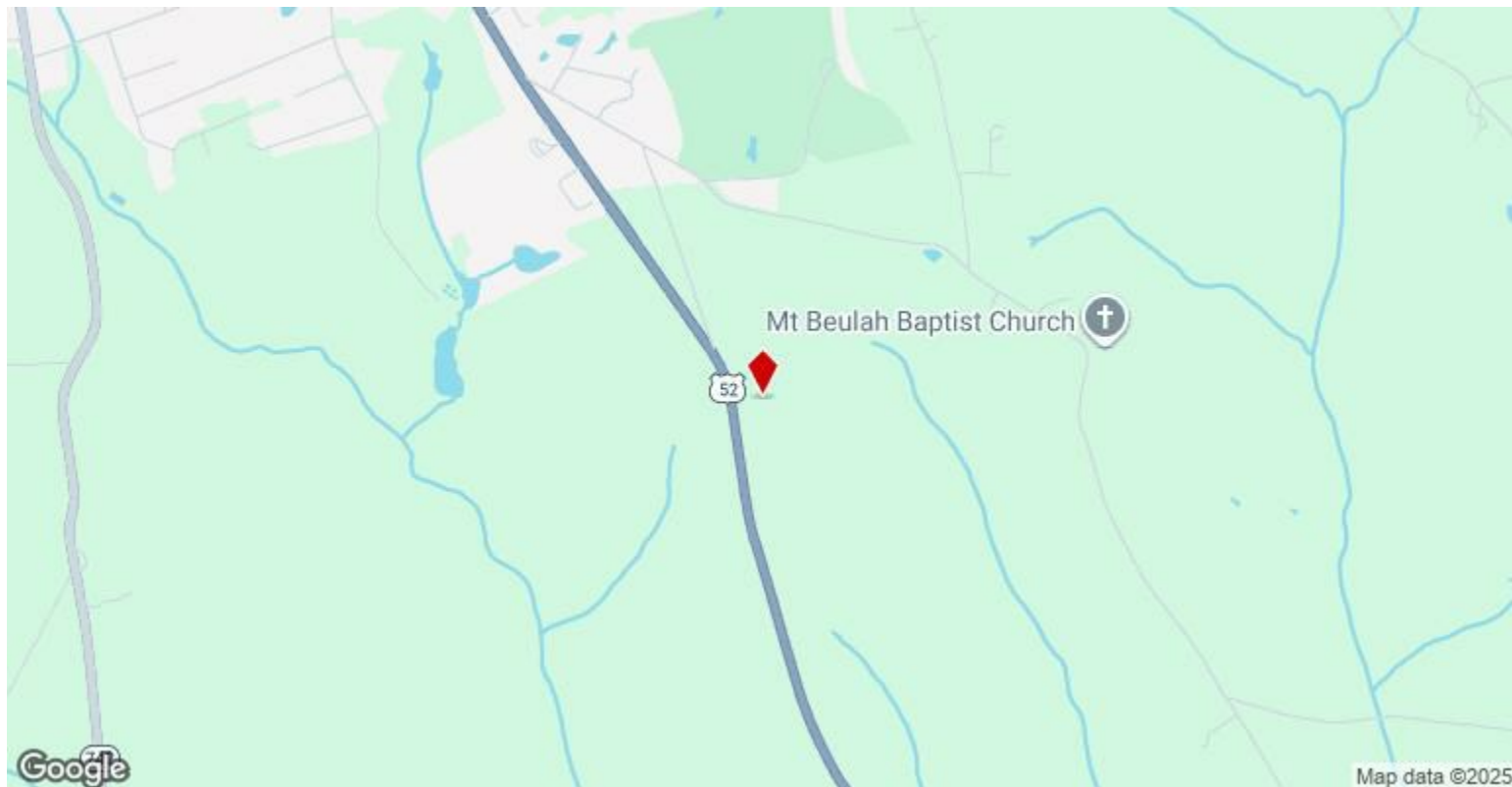
Rental Rate:	\$3.95 /SF/YR
Property Type:	Industrial
Property Subtype:	Manufacturing
Rentable Building Area:	103,918 SF
Year Built:	1968
Rental Rate Mo:	\$0.33 /SF/MO

1

1st Floor

Space Available	22,084 SF
Rental Rate	\$3.95 /SF/YR
Date Available	March 01, 2026
Service Type	[object Object]
Space Type	Relet
Space Use	Industrial
Lease Term	1 - 10 Years

22,084 square feet of industrial space for lease of "Suite A". The space includes 17-foot ceilings, full-LED lighting and 3 private offices with bathrooms. Located directly on Highway 52 South, the building has excellent street visibility and a large lot perfect for loading and unloading inventory.



2377 US Highway 52 S, Wadesboro, NC 28170

Industrial property suitable for warehouse, distribution and/or light manufacturing. Located directly on US Highway 52 South with gated and fenced yard.

Property Photos



Property Photos



Primary Photo



Building Photo

Property Photos



Interior Photo

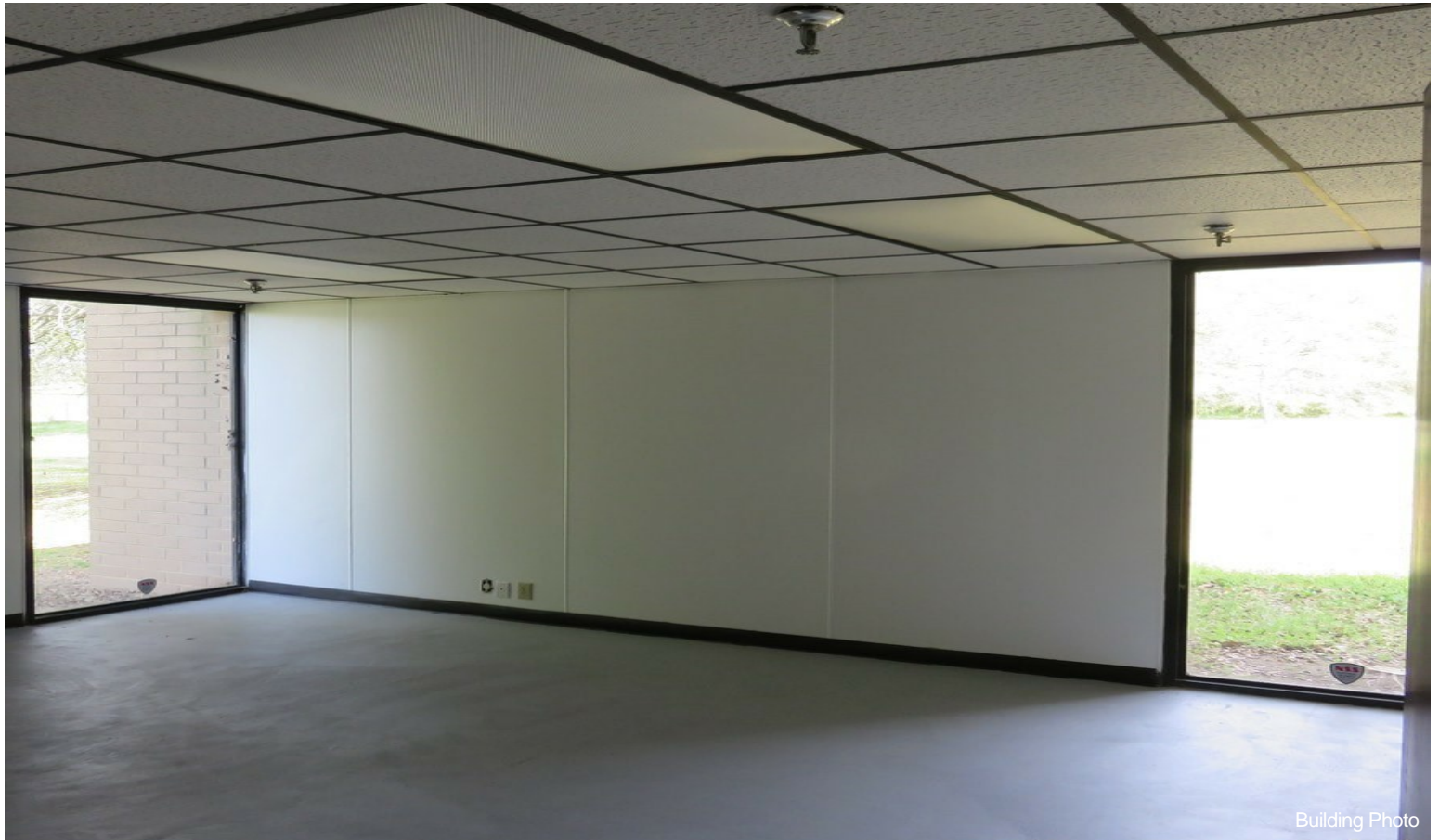


Building Photo

Property Photos



Building Photo



Building Photo

Property Photos



Property Photos

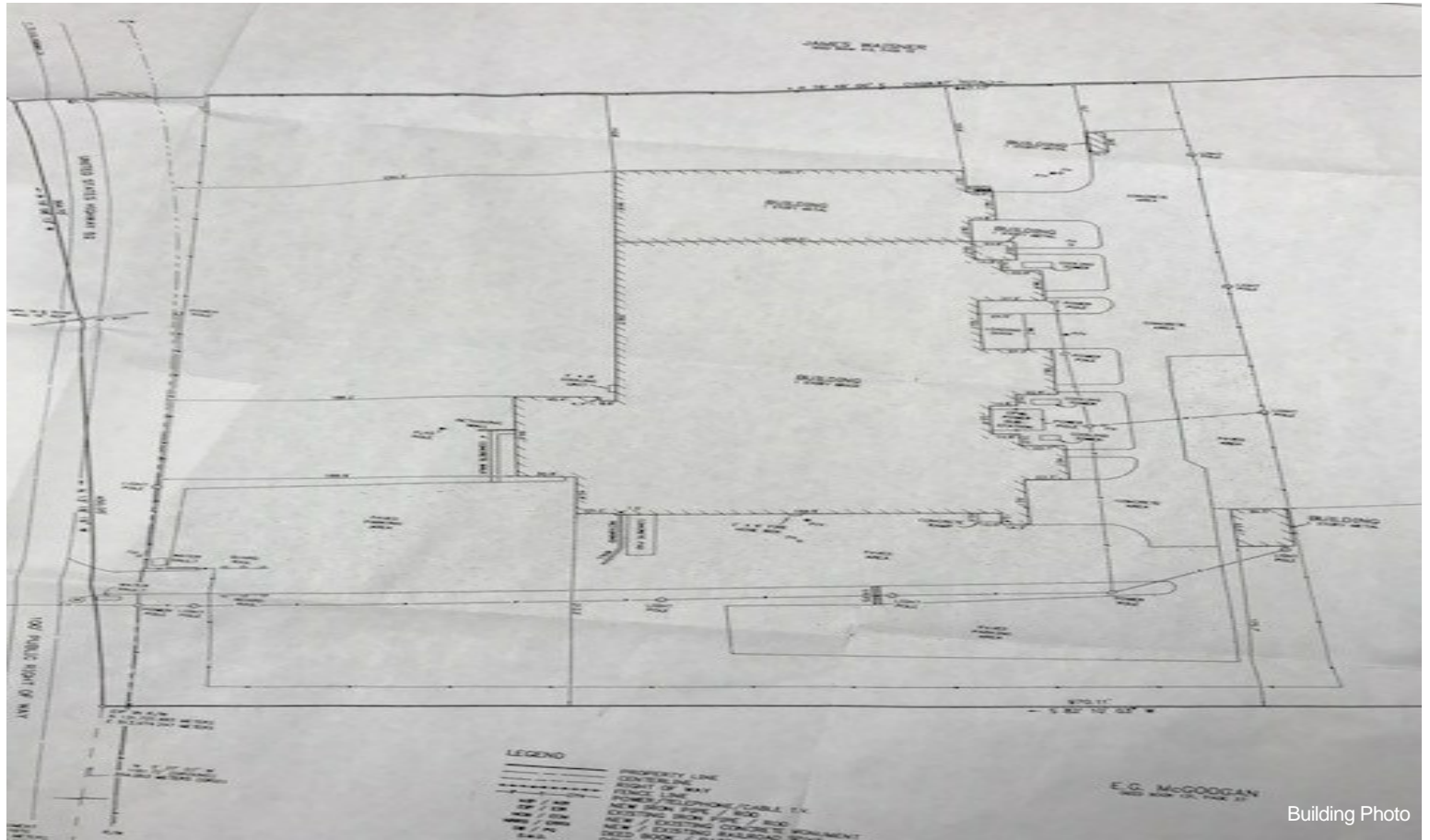


Building Photo



Building Photo

Property Photos



Building Photo