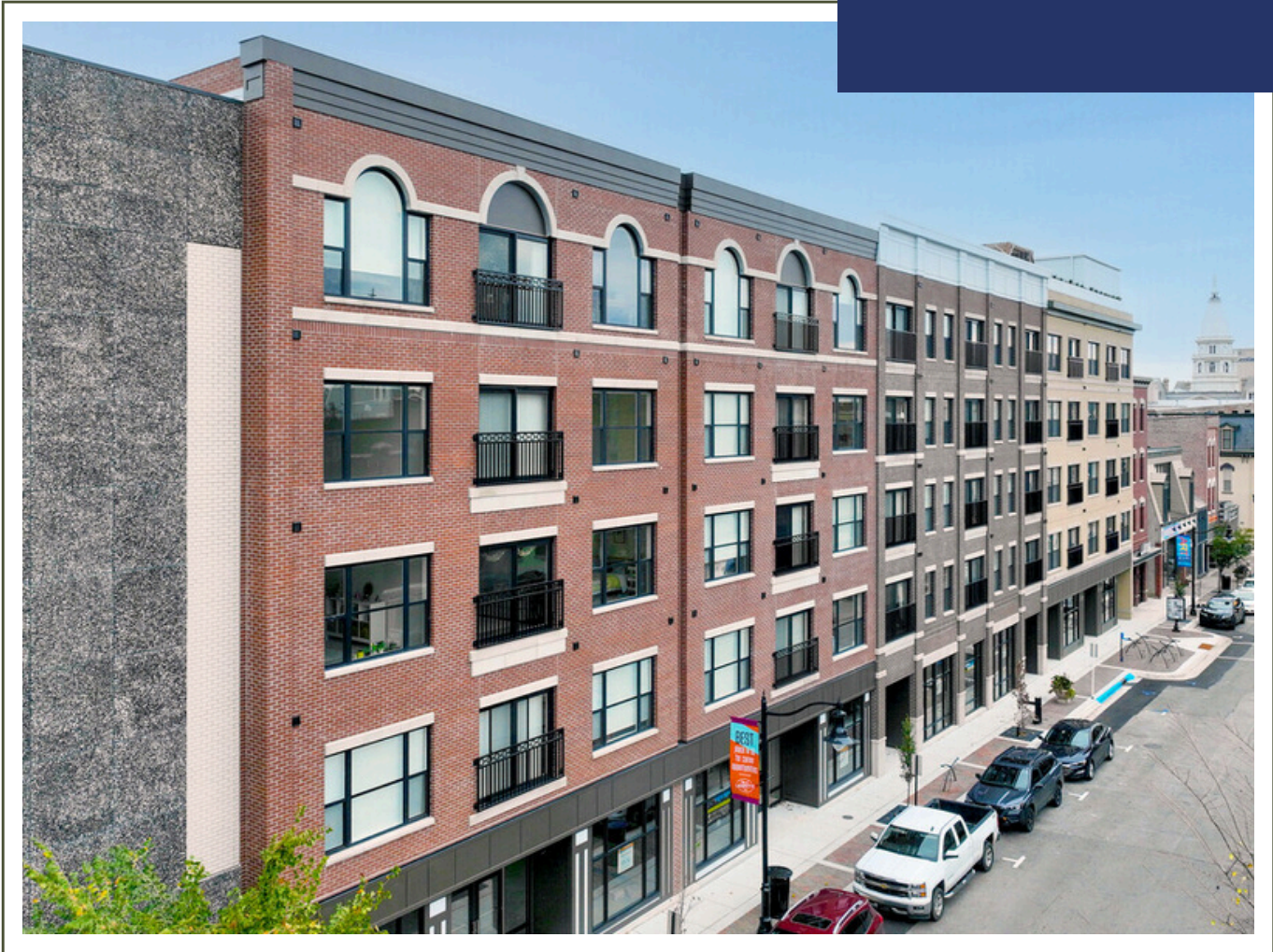


TWO SPACES LEFT!

RETAIL & OFFICE SPACE AVAILABLE



Welcome to **LUNA** located in the heart of downtown Lafayette and featuring nearly 10,000 Square Feet of Retail Space along Main Street.

Above the Retail Space are 98 high-end apartment units (Luna Flats) bringing affluent young professionals and empty nesters right to the door of your business. The bustling area's unique restaurants and shops attract major foot and vehicle traffic, and several street festivals bring enormous crowds each year.



RANDY TRUITT

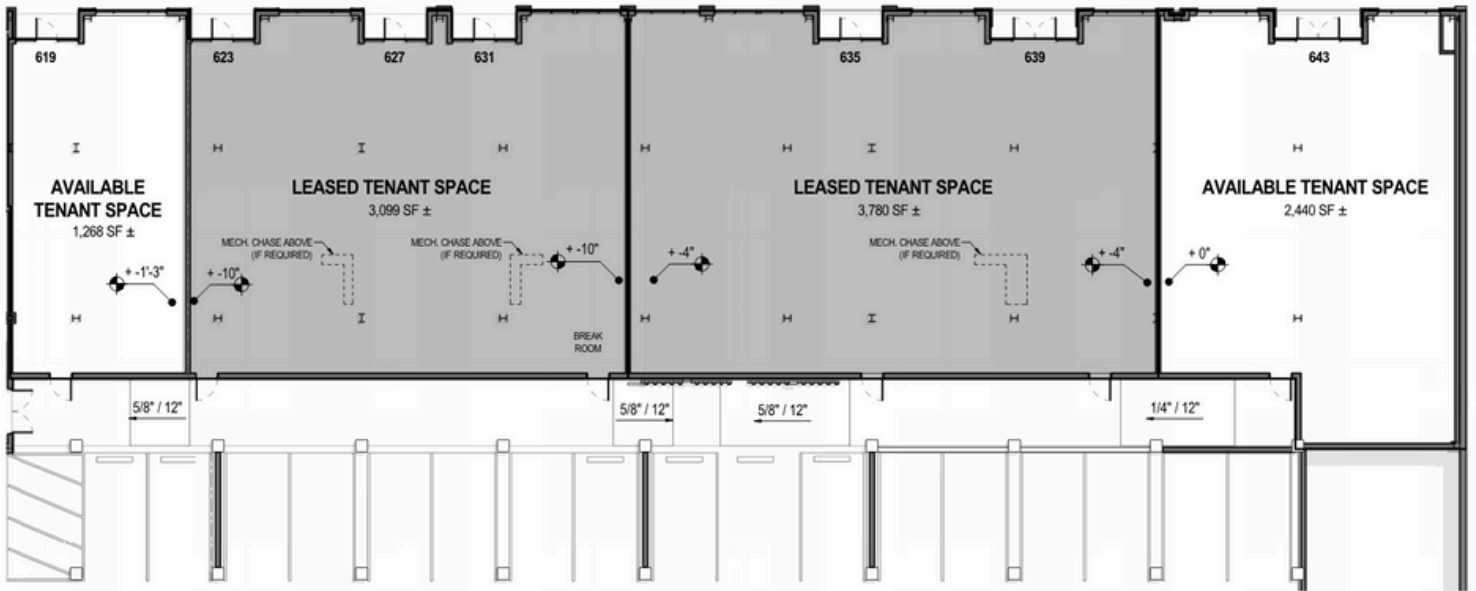
randy@truvantrealty.com

765-404-7584

NOW AVAILABLE

619 Main - 1,268 SF
\$18/SF NNN

643 Main - 2,440 SF
\$18/SF NNN



1 FIRST FLOOR RETAIL PLAN
A.1 SCALE: 1/16" = 1'-0"



Call Randy Truitt
765-404-7584

TRUVANT
REALTY

WWW.TRUVANTREALTY.COM

LUNA