



FOR LEASE

630 ELLIS STREET

630 Ellis Street, Augusta, GA 30901

**SHERMAN &
HEMSTREET**
Real Estate Company

JOE EDGE, SIOR, CCIM

President & Broker

jedge@shermanandhemstreet.com

706.288.1077

Property Summary



PROPERTY DESCRIPTION

The building is two story and includes executive suites on both floors. It covers modified gross lease for large tenants and full service for smaller office users. Renovations will be finishing soon on three ground floor office spaces. On-site parking is available for tenants. This building allows for secure 24/7 access for buildings. This building is only available to office based businesses and not retail operations.

LOCATION DESCRIPTION

This office building is located on Ellis Street near the intersection of 7th Street, Greene Street and Broad. Behind the newly renovated Miller Theater. Also in close proximity to the Augusta Municipal Building as well as the Cyber Command buildings on Reynolds. Great fast growing and changing area.

OFFERING SUMMARY

Lease Rate:	\$300.00 - 400.00 per month (Full Service)
Available SF:	75 - 165 SF
Lot Size:	0.18 Acres
Building Size:	8,040 SF

DEMOGRAPHICS	1 MILE	3 MILES	5 MILES
Total Households	3,758	20,737	45,157
Total Population	6,570	41,341	92,682
Average HH Income	\$29,578	\$41,340	\$47,129



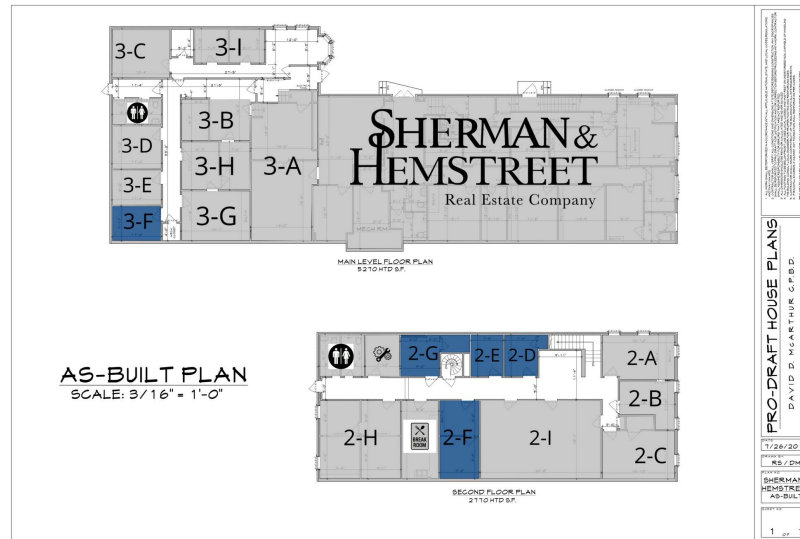
JOE EDGE, SIOR, CCIM
 President & Broker
 jedge@shermanandhemstreet.com
 706.288.1077

Plans

LEGEND

Available

Unavailable



LEASE INFORMATION

Lease Type:	Full Service	Lease Term:	Negotiable
Total Space:	75 - 165 SF	Lease Rate:	\$300.00 - \$400.00 per month

AVAILABLE SPACES

SUITE	TENANT	SIZE	TYPE	RATE	DESCRIPTION
2-D	Available	75 SF	Full Service	\$350 per month	-
2-E	Available	75 SF	Full Service	\$400 per month	-
2-G	Available	85 SF	Full Service	\$400 per month	-
2-F	Available	165 SF	Full Service	\$350 per month	-
3-F	Available	89 SF	Full Service	\$300 per month	-



JOE EDGE, SIOR, CCIM
 President & Broker
 jedge@shermanandhemstreet.com
 706.288.1077

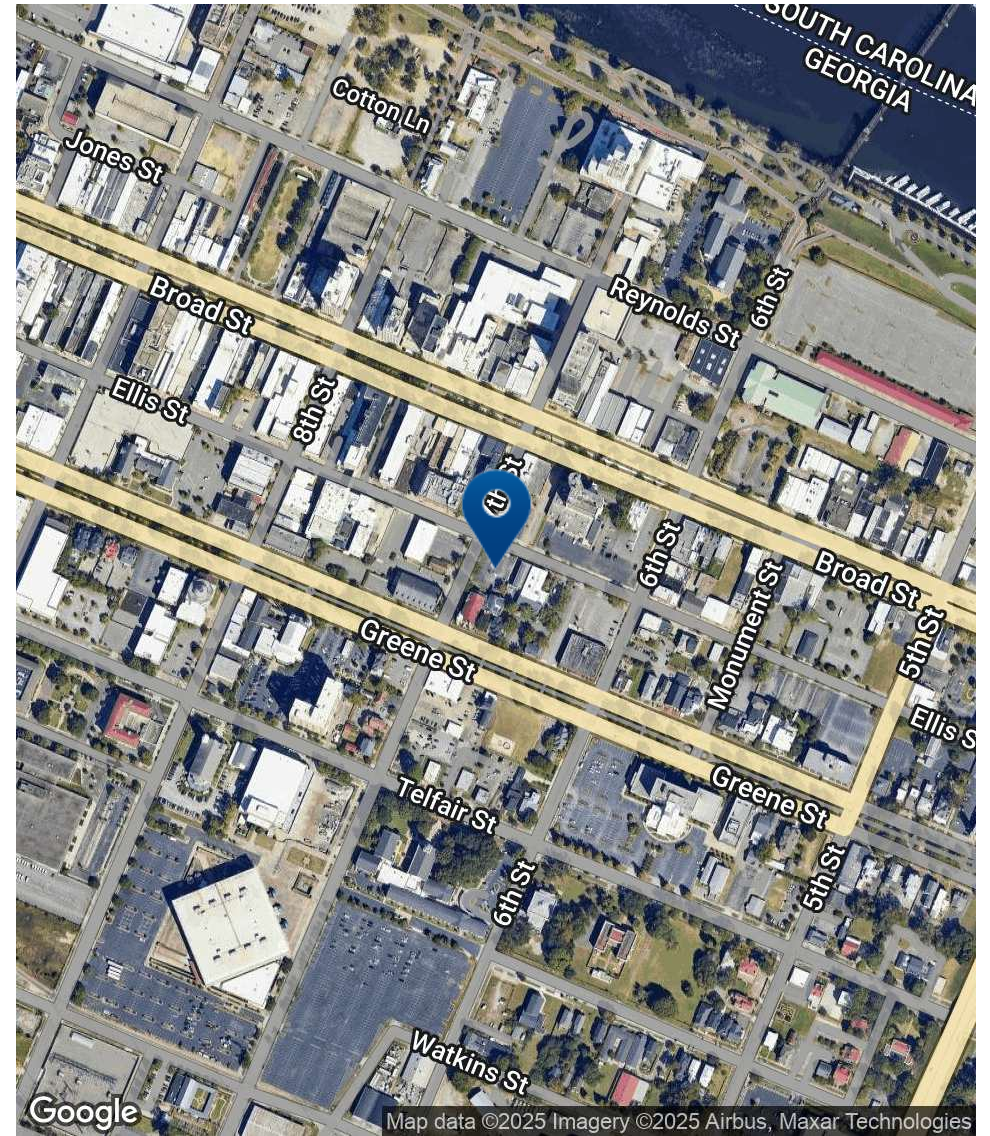
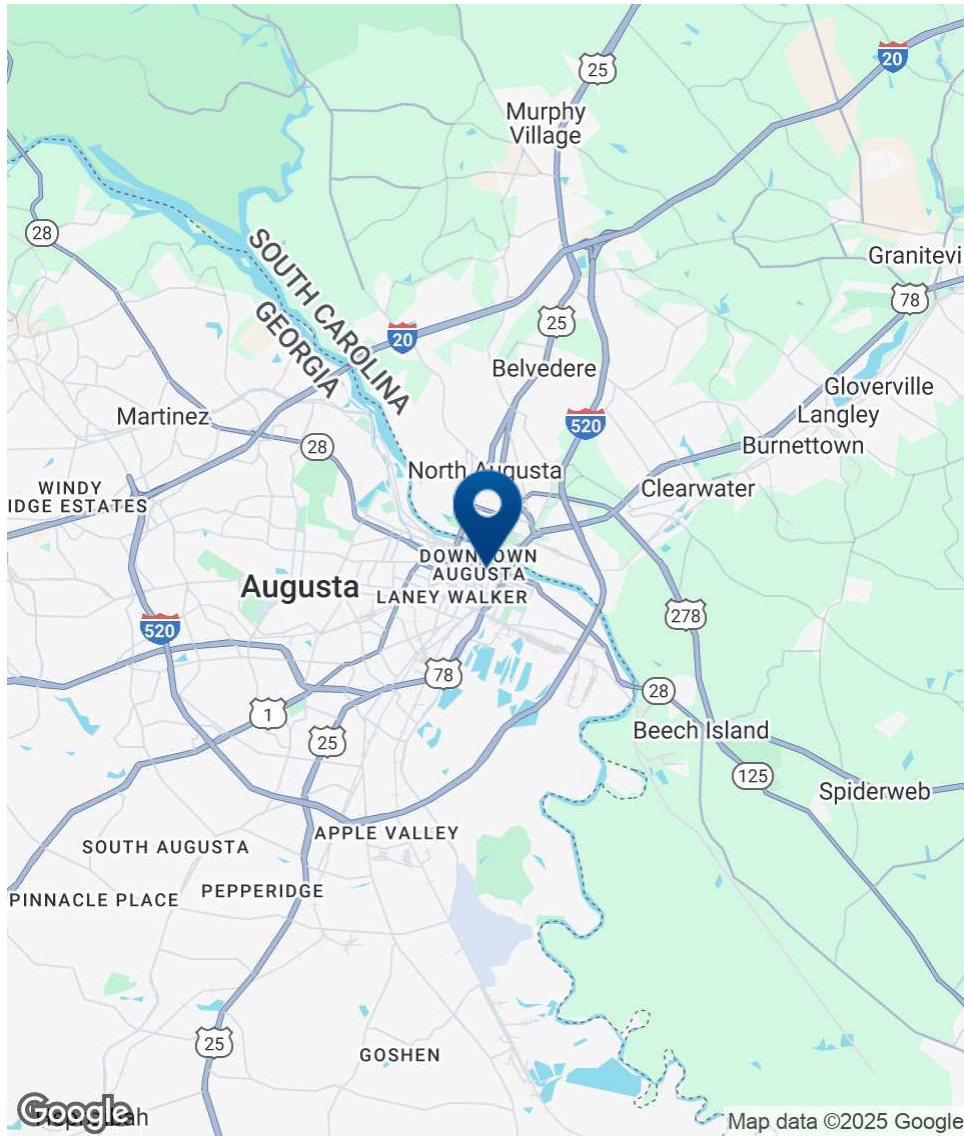
Additional Photos



**SHERMAN &
HEMSTREET**
Real Estate Company

JOE EDGE, SIOR, CCIM
President & Broker
jedge@shermanandhemstreet.com
706.288.1077

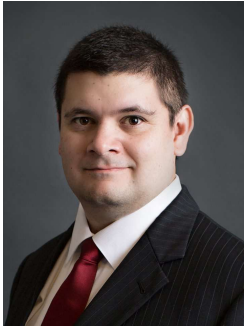
Location Map



SHERMAN & HEMSTREET
Real Estate Company

JOE EDGE, SIOR, CCIM
President & Broker
jedge@shermanandhemstreet.com
706.288.1077

Advisor Bio 1



JOE EDGE, SIOR, CCIM

President & Broker

jedge@shermanandhemstreet.com

Direct: 706.288.1077 | **Cell:** 706.627.2789

PROFESSIONAL BACKGROUND

Joe Edge has been a licensed real estate broker for nearly two decades. After four years of serving in the Marine Corps, Joe started his career in real estate shortly thereafter acquiring the then 90-year-old firm Sherman & Hemstreet, Augusta, GA's largest commercial real estate firm in 2006. Currently, S&H is the largest CRE firm in the Augusta, GA region and provides commercial real estate services for all of the southeastern United States.

Currently Sherman & Hemstreet manages over 10 million square feet of office, industrial and retail space.

Currently, Joe holds both the CCIM and SIOR designations and is a CPM (Certified Property Manager) candidate. The CCIM is the highest designation an investment sales broker can obtain. The SIOR designation is the most prestigious designation any office or industrial broker can receive requiring a very high commission threshold. Several S&H agents hold these designations. To learn more about these designations go to www.ccim.com or www.sior.com.

MEMBERSHIPS

Certified Commercial Investment Member (CCIM)

Society of Industrial and Office Realtors (SIOR)

Sherman & Hemstreet Real Estate Company

4316 Washington Road
Evans, GA 30809
706.722.8334



JOE EDGE, SIOR, CCIM

President & Broker

jedge@shermanandhemstreet.com

706.288.1077