



LAND FOR SALE

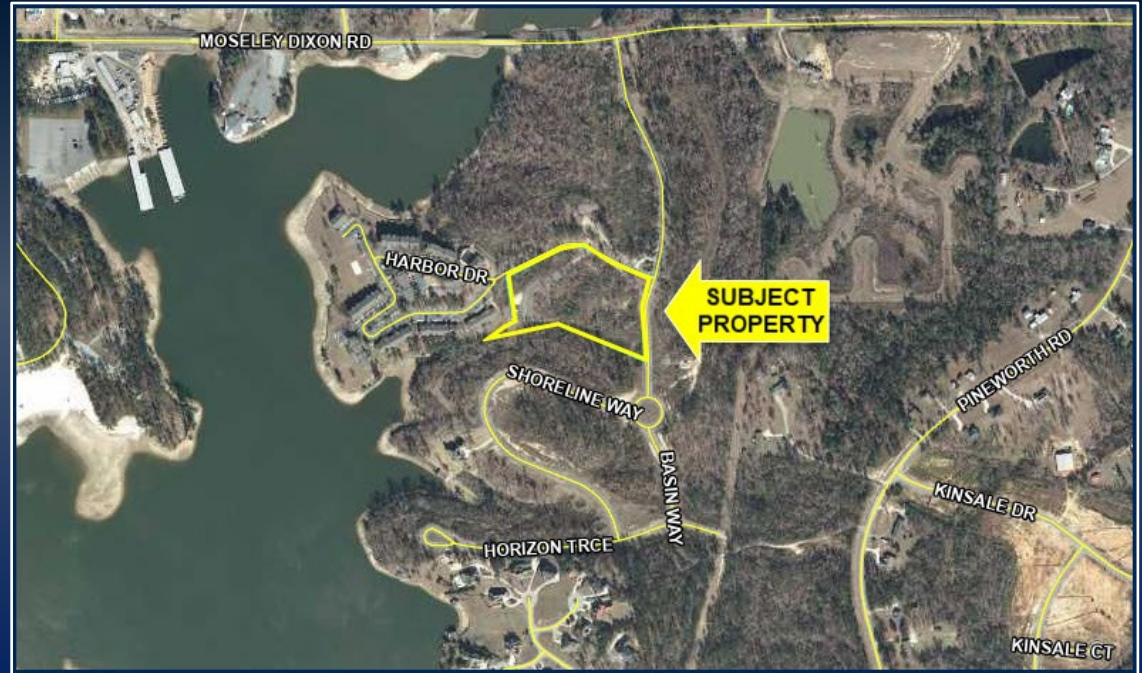
200 GREAT WATERS LANE
LIZELLA, GA 31052
BIBB COUNTY

±5.28 ACRES

PRICE REDUCED:

~~\$99,000~~

\$75,000



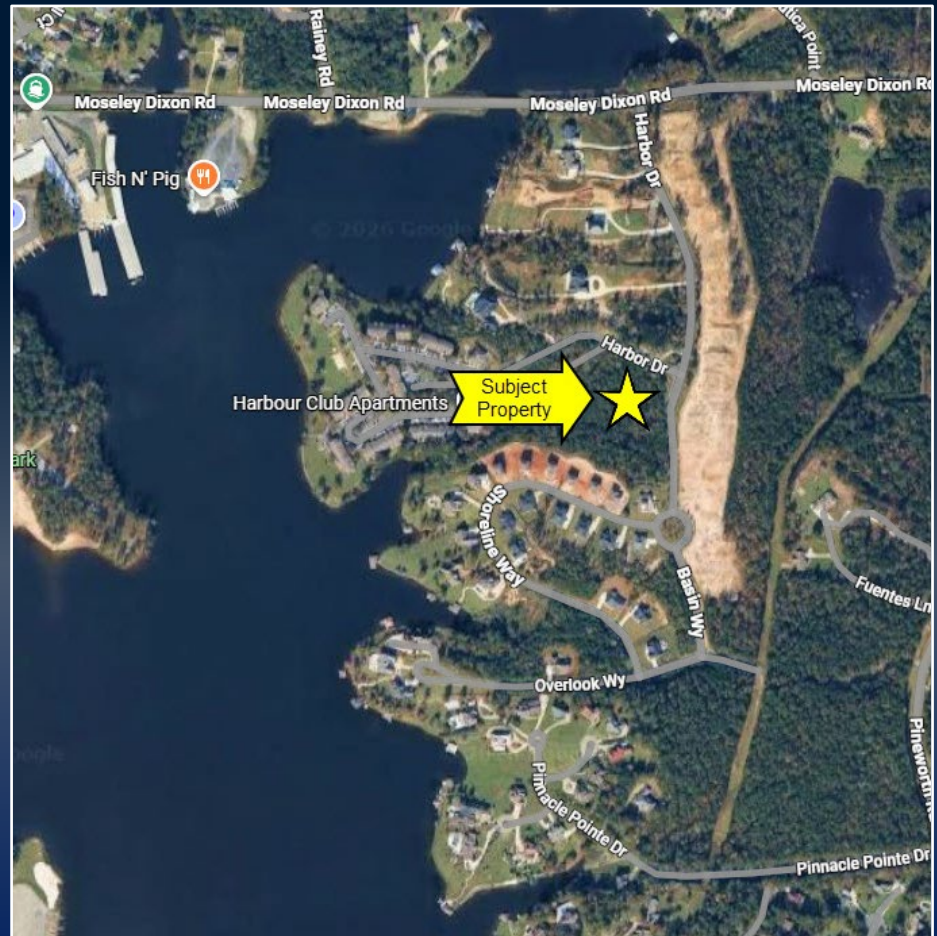
ADAM BAILEY C: 478.733.7961 | STERLING BAILEY C: 478.733.7961
ABAILEY@THESUMMITGROUPMACON.COM | SBAILEY@THESUMMITGROUPMACON.COM
4124 ARKWRIGHT ROAD, SUITE 1, MACON, GA 31210
O: 478.750.7507

WWW.THESUMMITGROUPMACON.COM



PROPERTY INFORMATION

- ±5.28 acres
- Zoned PDE
- Surrounded by recreational amenities
- Positioned near established residential communities
- Convenient access to major local attractions including Lake Tobesofkee
- Located just off Moseley Dixon Road with easy connectivity to Macon, providing excellent accessibility and visibility



200 GREAT WATERS LANE
LIZELLA, GA 31052
BIBB COUNTY



