

24435-24900 FORTERRA DR.
12900-12978 TEN MILE RD.
WARREN, MICHIGAN

INDUSTRIAL FOR LEASE
10,500 & 10,685 Square Foot Units



**SIGNATURE
ASSOCIATES**
KNOW SIGNATURE | KNOW RESULTS

FORTERRA INDUSTRIAL PARK



PROPERTY FEATURES

- First class hi-tech park under new ownership
- Zoned M-2 with varying ceiling heights and power
- Abundant parking
- Completely refurbished units
- Great central location in Metro Detroit with excellent accessibility from I-696 & I-94
- Competitive lease rates & terms
- 100% air conditioning available



For more information, please contact:

BEN WILKIEMEYER
(248) 359 0624
bwilkiemeyer@signatureassociates.com

PAUL SAAD
(248) 359 0652
psaad@signatureassociates.com

SIGNATURE ASSOCIATES
One Towne Square, Suite 1200
Southfield, MI 48076
www.signatureassociates.com

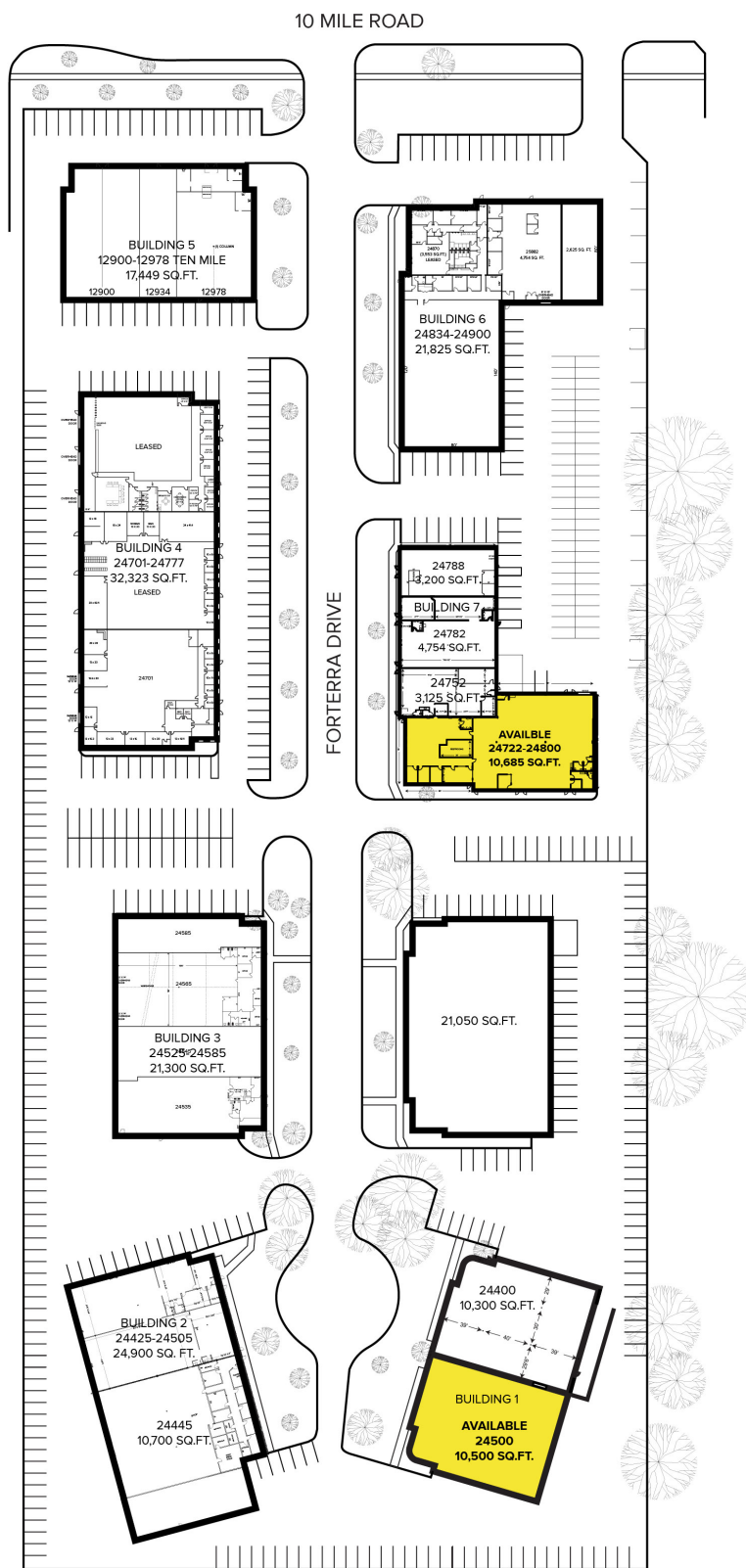
Forterra Industrial Park – Warren, Michigan

Industrial For Lease

10,500 - 10,685
Square Feet
AVAILABLE

AVAILABILITY

ADDRESS	TOTAL SF & OFFICE SF	RATE
24500	10,500 / 3,500	\$10.50 G
24722	10,685 / Varies	\$10.50 G



For more information, please contact:

BEN WILKEMEYER
(248) 359 0624
bwilkiemeyer@signatureassociates.com

PAUL SAAD
(248) 359 0652
psaad@signatureassociates.com

SIGNATURE ASSOCIATES
One Towne Square, Suite 1200
Southfield, MI 48076
www.signatureassociates.com

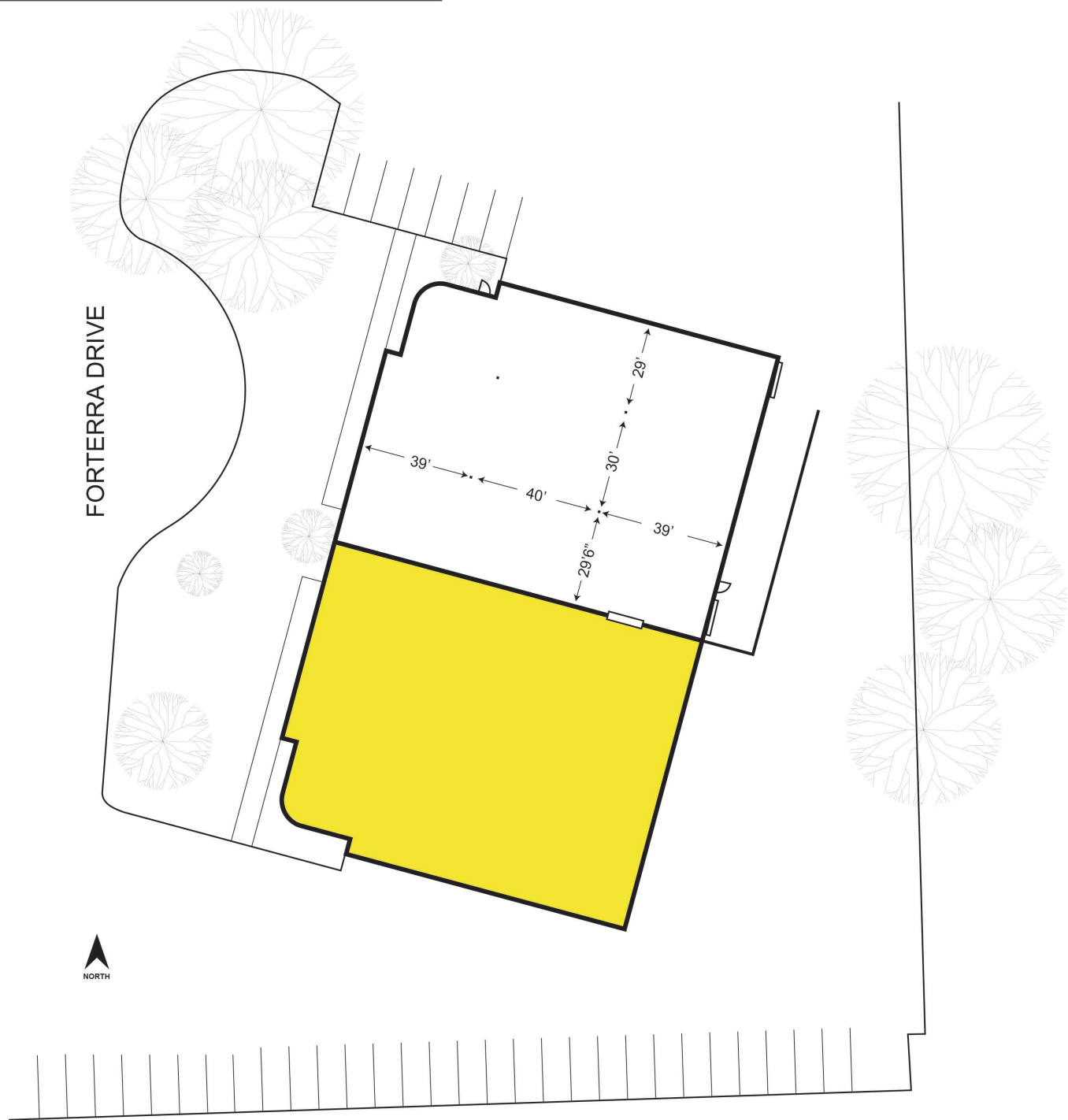
Information is subject to verification and no liability for errors or omissions is assumed. Price is subject to change and listing withdrawal.

Forterra Industrial Park – Warren, Michigan

Industrial For Lease

10,500 - 10,685
Square Feet
AVAILABLE

AVAILABILITY		
ADDRESS	TOTAL SF & OFFICE SF	RATE
24500	10,500 / 3,500	\$10.50 G



For more information, please contact:

BEN WILKEMEYER
(248) 359 0624
bwilkiemeyer@signatureassociates.com

PAUL SAAD
(248) 359 0652
psaad@signatureassociates.com

SIGNATURE ASSOCIATES
One Towne Square, Suite 1200
Southfield, MI 48076
www.signatureassociates.com

Information is subject to verification and no liability for errors or omissions is assumed. Price is subject to change and listing withdrawal.

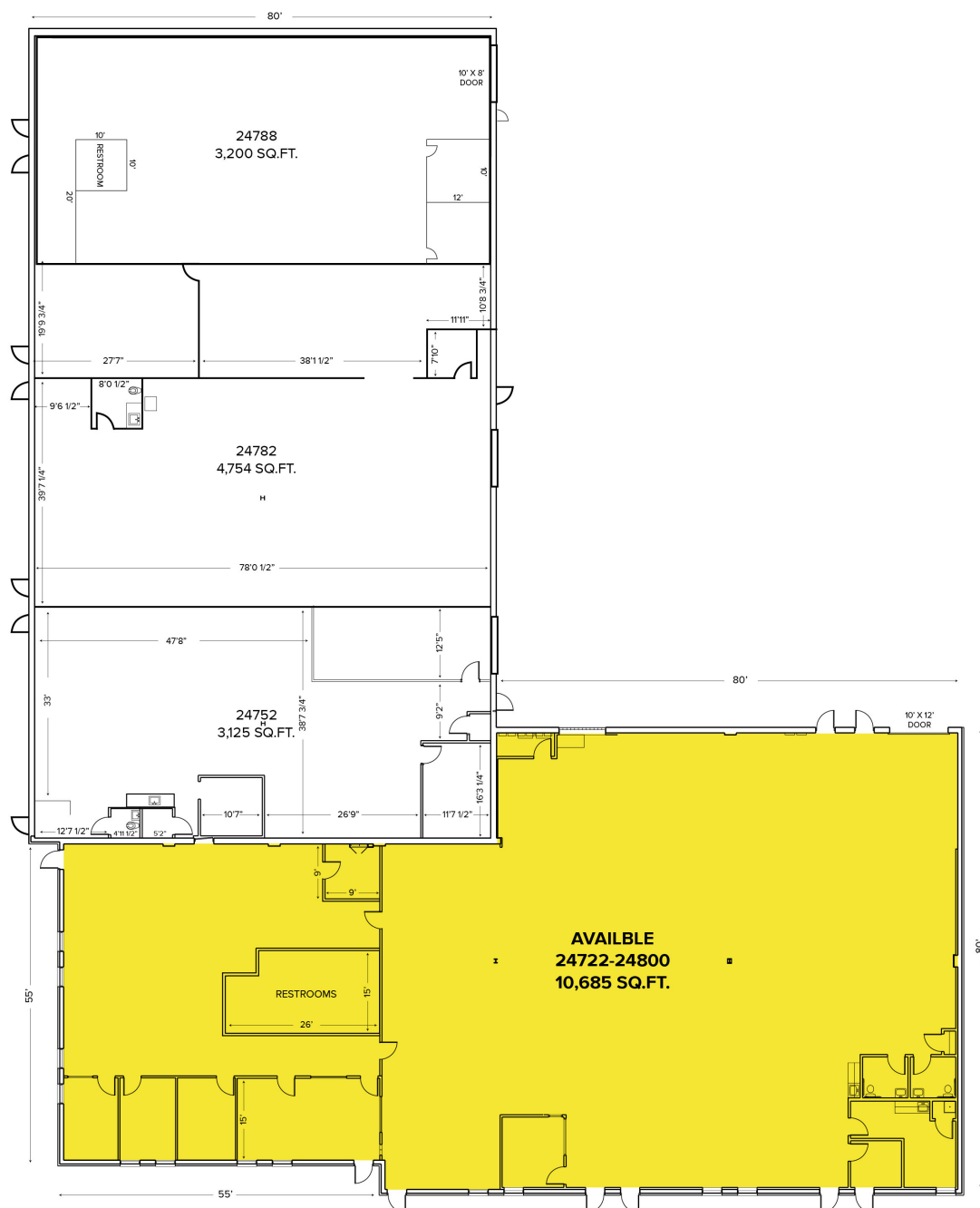
Forterra Industrial Park – Warren, Michigan

Industrial For Lease

10,500 - 10,685
Square Feet
AVAILABLE

AVAILABILITY

ADDRESS	TOTAL SF & OFFICE SF	RATE
24722	10,685 / 4,485	\$10.50 G



For more information, please contact:

BEN WILKIEMEYER
(248) 359 0624
bwilkiemeyer@signatureassociates.com

PAUL SAAD
(248) 359 0652
psaad@signatureassociates.com

SIGNATURE ASSOCIATES
One Towne Square, Suite 1200
Southfield, MI 48076
www.signatureassociates.com

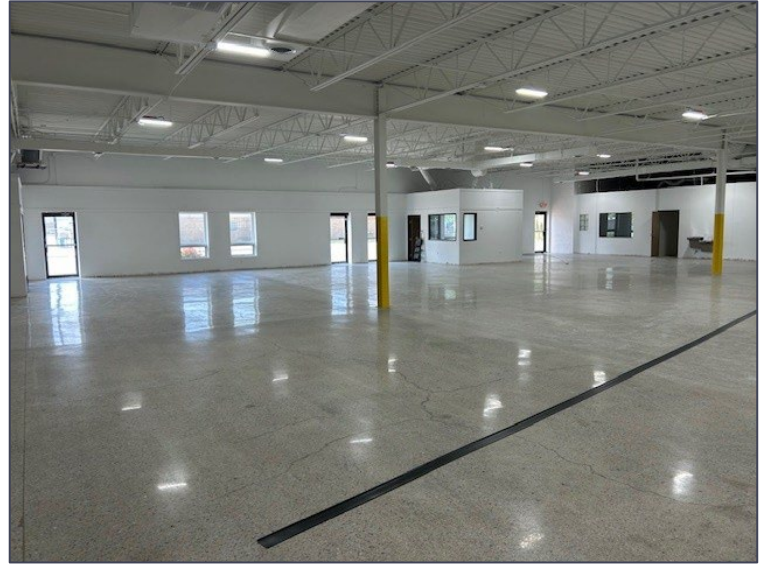
Information is subject to verification and no liability for errors or omissions is assumed. Price is subject to change and listing withdrawal.

Forterra Industrial Park – Warren, Michigan

Industrial For Lease

10,500 - 10,685
Square Feet
AVAILABLE

Interior Photos – Unit 24722



For more information, please contact:

BEN WILKEMEYER
(248) 359 0624
bwilkiemeyer@signatureassociates.com

PAUL SAAD
(248) 359 0652
psaad@signatureassociates.com

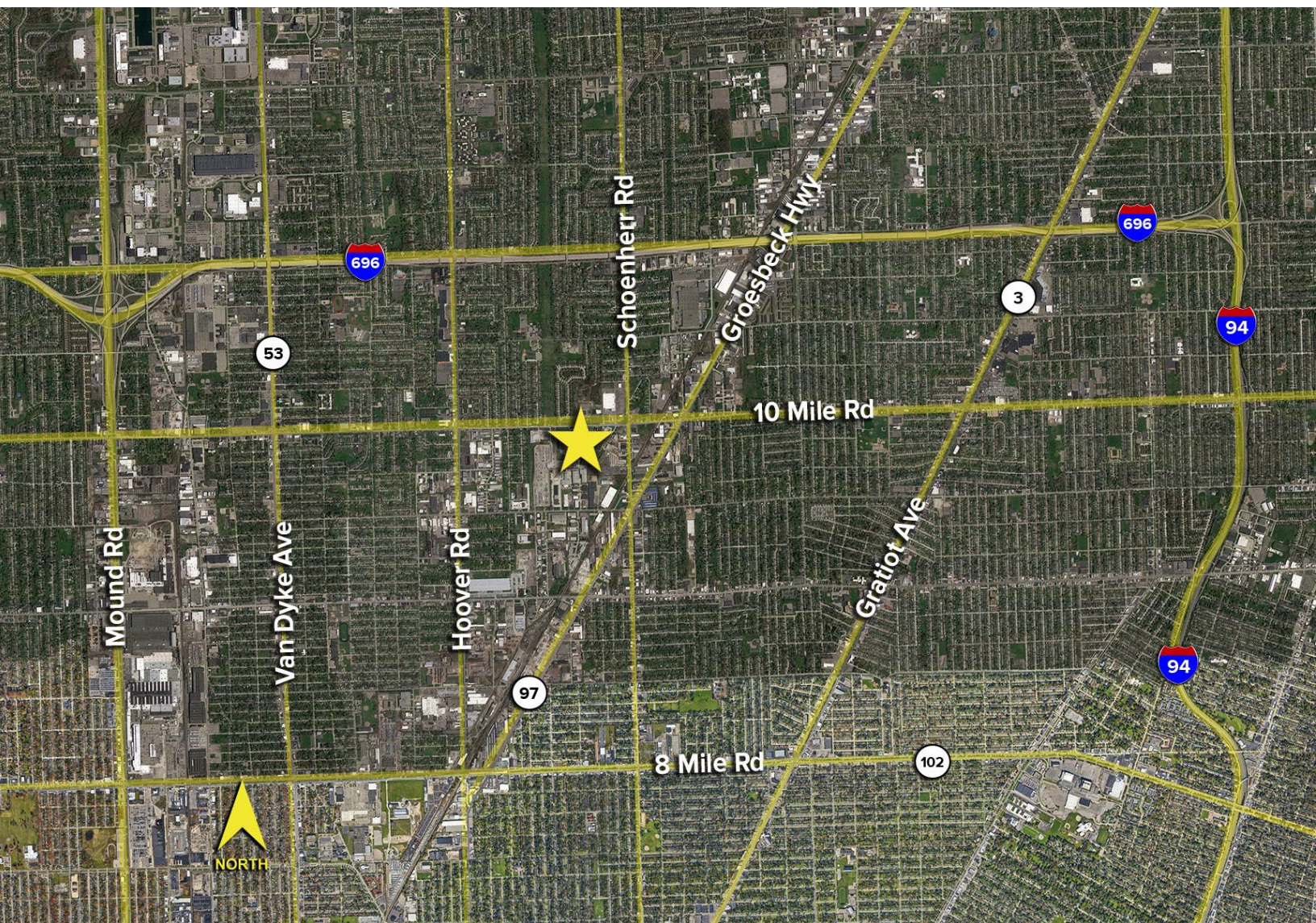
SIGNATURE ASSOCIATES
One Towne Square, Suite 1200
Southfield, MI 48076
www.signatureassociates.com

Information is subject to verification and no liability for errors or omissions is assumed. Price is subject to change and listing withdrawal.

Forterra Industrial Park – Warren, Michigan

Industrial For Lease

10,500 - 10,685
Square Feet
AVAILABLE



GREAT CENTRAL LOCATION

Located within 15 Minutes of Downtown Detroit, Southfield,
Royal Oak, Troy and Major Automotive Companies

Excellent Accessibility from I-696 & I-94

For more information, please contact:

BEN WILKEMEYER
(248) 359 0624
bwilkiemeyer@signatureassociates.com

PAUL SAAD
(248) 359 0652
psaad@signatureassociates.com

SIGNATURE ASSOCIATES
One Towne Square, Suite 1200
Southfield, MI 48076
www.signatureassociates.com