

RETAIL FOR LEASE WESTWOOD PLAZA

5825 BROCKWAY ROAD, SAGINAW, MI 48603



OFFERING SUMMARY

AVAILABLE SF:	1,203 SF up to 4,838 SF
LEASE RATE:	Negotiable
TAX/CAM 2024	\$5.35 PSF
YEAR BUILT:	1998
BUILDING SF:	50,100
LOT SIZE:	7.44 Acres
ZONING:	B-3, Community Commercial District

PROPERTY OVERVIEW

Westwood Plaza is a shadow anchored strip center to the Walmart Supercenter and is anchored by Dollar Tree along with many national co-tenants. The plaza is located right off of the heavily traveled State Street in Saginaw. This high traffic location presents opportunities for a variety of retail, restaurant, and service users.

PROPERTY HIGHLIGHTS

- Strong Shadow Anchor - Walmart Supercenter
- Highly Traveled Commercial/Retail Corridor of Saginaw MSA
- Flexible Zoning: B-3 - Allowing for Many Uses



KW COMMERCIAL MIDWEST | AMK
14665 Galaxie Ave Suite 350
Apple Valley, MN 55124



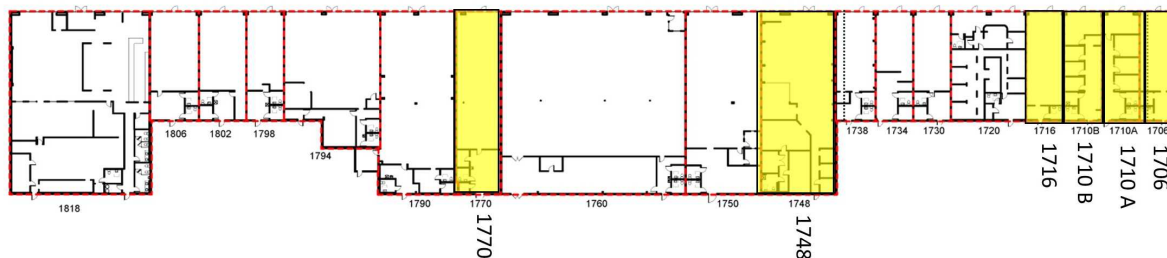
Each Office Independently Owned and Operated

MATTHEW KLEIN, CCIM

Senior Director Investment Services
O: (651) 262-1002
C: (612) 382-3403
matt@amkprop.com
20186454, Minnesota

AVAILABLE SPACES

5825 BROCKWAY ROAD, SAGINAW, MI 48603



TOTAL GROSS:
50,580 SF

OVERALL

WESTOOD PLAZA - SAGINAW, MI

2024 Tax/CAM:
\$5.35 PSF/YR

SUITE 1706
1,228 SF up to 4,838 SF

NET RATE
Negotiable + Tax/CAM

SUITE 1710 A
1,203 SF up to 4,838 SF

NET RATE
Negotiable + Tax/CAM

SUITE 1710 B
1,205 SF up to 4,838 SF

NET RATE
Negotiable + Tax/CAM

SUITE 1716
1,204 SF up to 4,838 SF

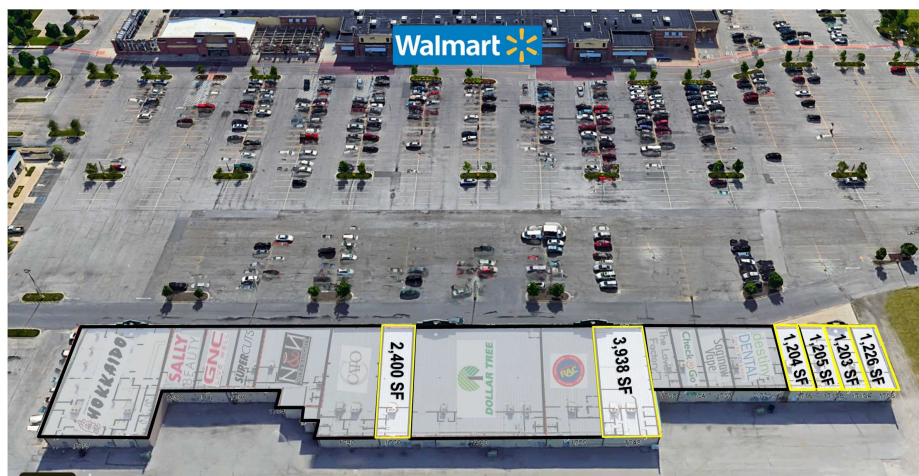
NET RATE
Negotiable + Tax/CAM

SUITE 1748
3,938 SF

NET RATE
Negotiable + Tax/CAM

SUITE 1770
2,400 SF

NET RATE
Negotiable + Tax/CAM



KW COMMERCIAL MIDWEST | AMK
14665 Galaxie Ave Suite 350
Apple Valley, MN 55124



Each Office Independently Owned and Operated

MATTHEW KLEIN, CCIM
Senior Director Investment Services
O: (651) 262-1002
C: (612) 382-3403
matt@amkprop.com
20186454, Minnesota

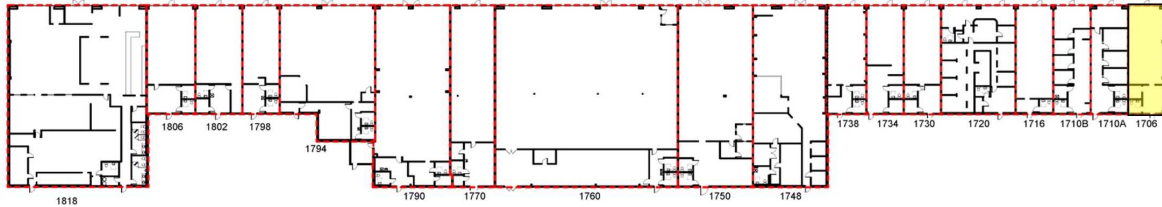
SUITE 1706: 1,226 SF

5825 BROCKWAY ROAD, SAGINAW, MI 48603



SUITE 1706
1,226 SF

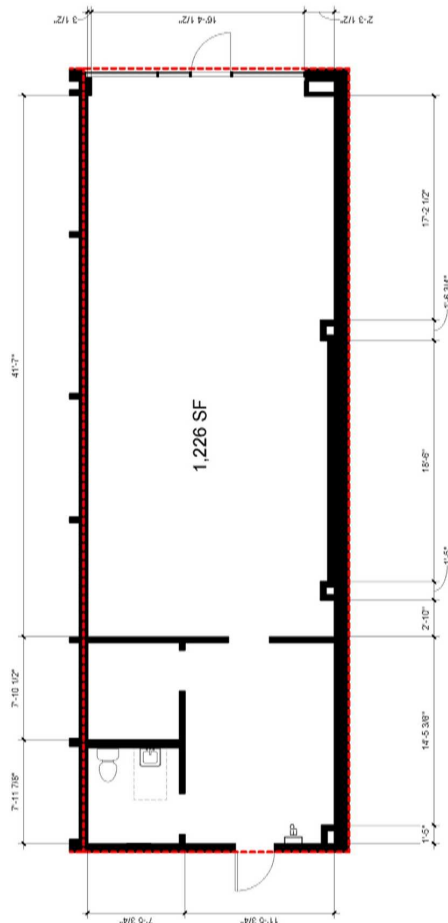
Suites 1706, 1710 A, 1710 B and 1716 can be combined for up to 4,838 SF of contiguous space



TOTAL GROSS:
50,580 SF

OVERALL

WESTOOD PLAZA - SAGINAW, MI



SUITE 1706
WESTOOD PLAZA - SAGINAW, MI

KW COMMERCIAL MIDWEST | AMK
14665 Galaxie Ave Suite 350
Apple Valley, MN 55124



Each Office Independently Owned and Operated

MATTHEW KLEIN, CCIM

Senior Director Investment Services
O: (651) 262-1002
C: (612) 382-3403
matt@amkprop.com
20186454, Minnesota

SUITE 1710 A & 1710 B

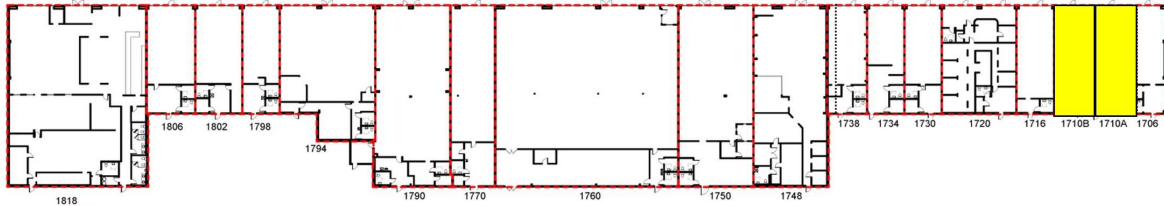
5825 BROCKWAY ROAD, SAGINAW, MI 48603



SUITE 1710 A
1,203 SF

SUITE 1710 B
1,205 SF

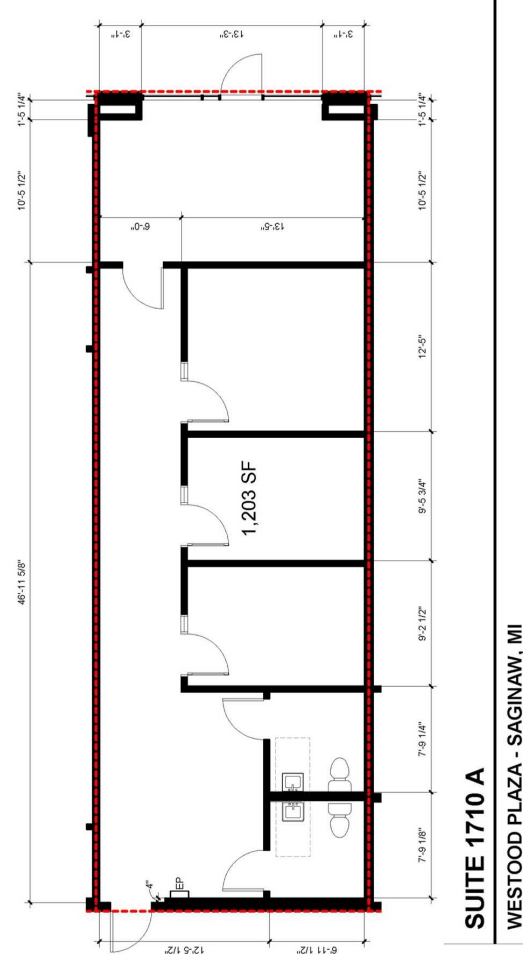
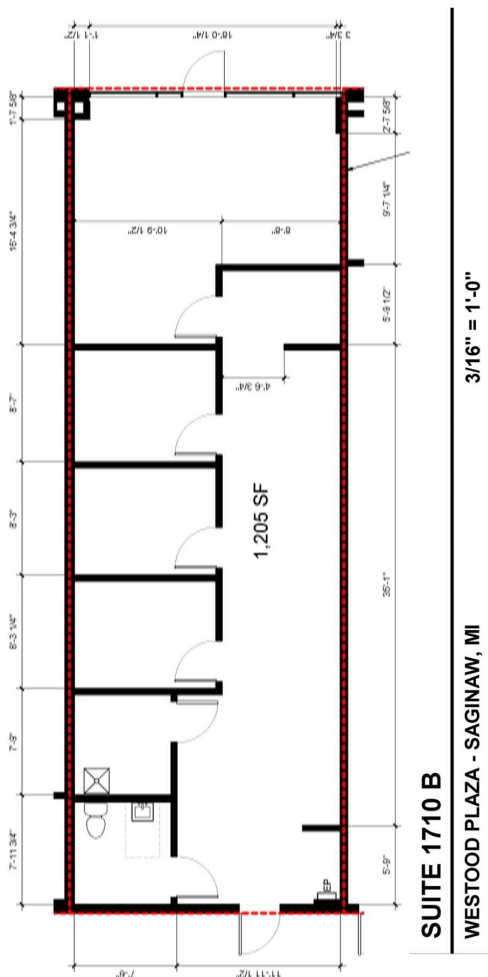
Suites 1706, 1710 A, 1710 B and 1716 can be combined for up to 4,838 SF of contiguous space



TOTAL GROSS:
50,580 SF

OVERALL

WESTOOD PLAZA - SAGINAW, MI



KW COMMERCIAL MIDWEST | AMK
14665 Galaxie Ave Suite 350
Apple Valley, MN 55124



Each Office Independently Owned and Operated

MATTHEW KLEIN, CCIM

Senior Director Investment Services
O: (651) 262-1002
C: (612) 382-3403
matt@amkprop.com
20186454, Minnesota

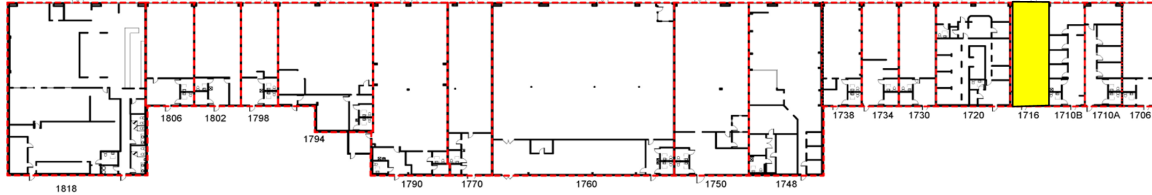
SUITE 1716: 1,204 SF

5825 BROCKWAY ROAD, SAGINAW, MI 48603



SUITE 1716
1,204 SF

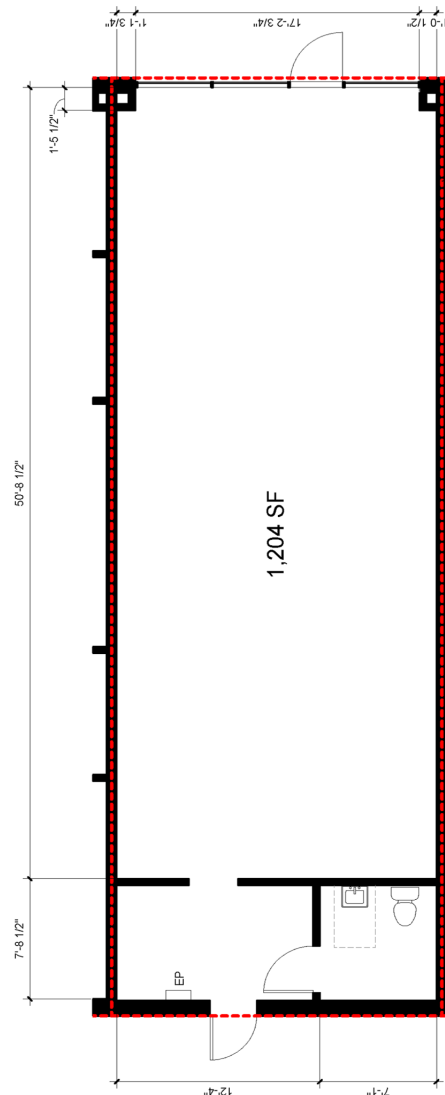
Suites 1706, 1710 A, 1710 B and 1716 can be combined for up to 4,838 SF of contiguous space



TOTAL GROSS:
50.580 SF

OVERALL

WESTOOD PLAZA - SAGINAW, MI



SUITE 1716
WESTOOD PLAZA - SAGINAW, MI

KW COMMERCIAL MIDWEST | AMK
14665 Galaxie Ave Suite 350
Apple Valley, MN 55124



Each Office Independently Owned and Operated

MATTHEW KLEIN, CCIM

Senior Director Investment Services
O: (651) 262-1002
C: (612) 382-3403
matt@amkprop.com
20186454, Minnesota

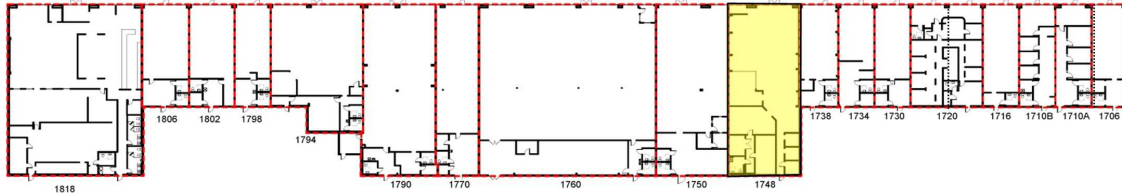
SUITE 1748: 3,938 SF

5825 BROCKWAY ROAD, SAGINAW, MI 48603



SUITE 1748

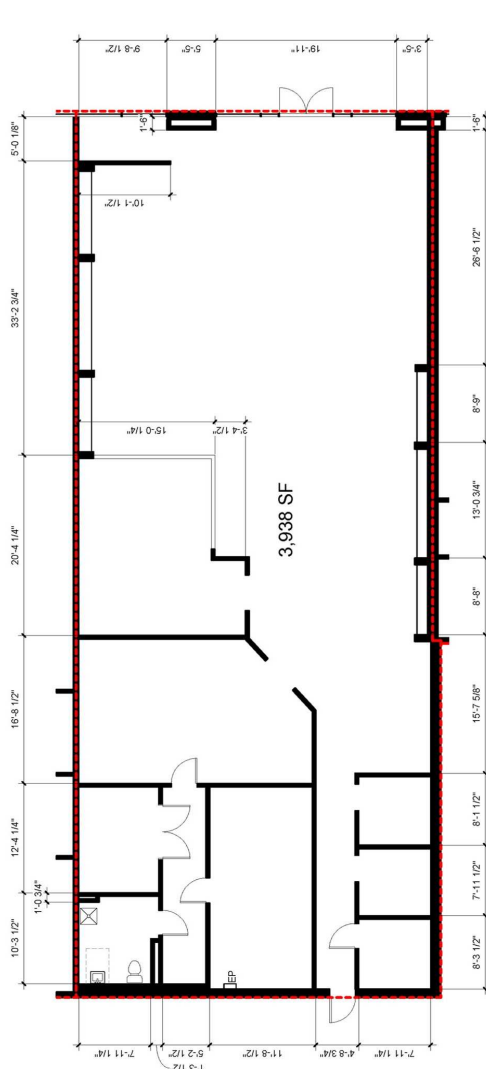
3,938 SF



TOTAL GROSS:
50,580 SF

OVERALL

WESTOOD PLAZA - SAGINAW, MI



SUITE 1748

WESTOOD PLAZA - SAGINAW, MI

KW COMMERCIAL MIDWEST | AMK
14665 Galaxie Ave Suite 350
Apple Valley, MN 55124



Each Office Independently Owned and Operated

MATTHEW KLEIN, CCIM

Senior Director Investment Services

O: (651) 262-1002

C: (612) 382-3403

matt@amkprop.com

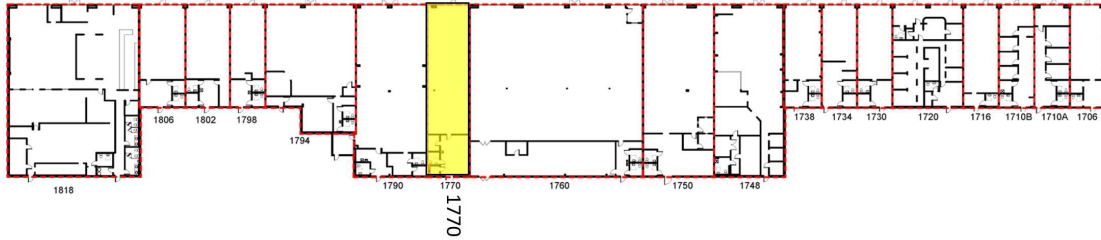
20186454, Minnesota

SUITE 1770: 2,400 SF

5825 BROCKWAY ROAD, SAGINAW, MI 48603



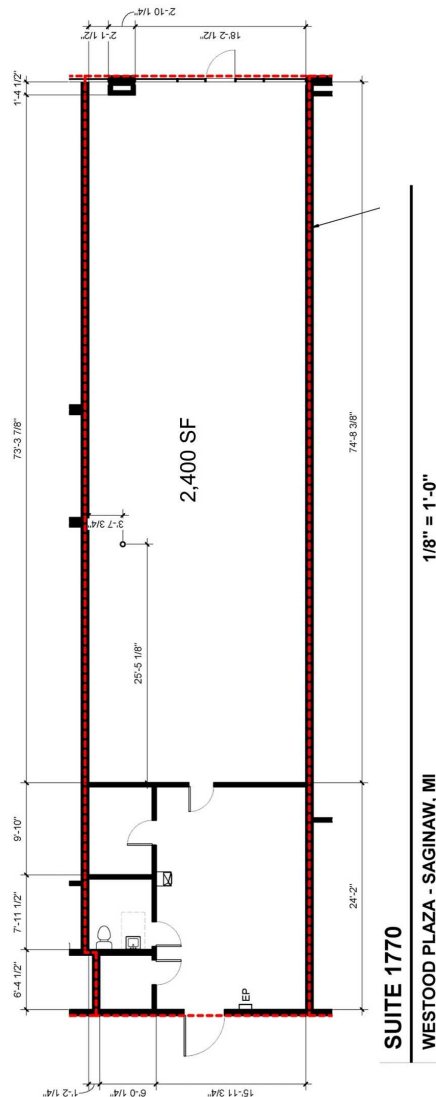
SUITE 1770
2,400 SF



TOTAL GROSS:
50,580 SF

OVERALL

WESTOOD PLAZA - SAGINAW, MI



KW COMMERCIAL MIDWEST | AMK
14665 Galaxie Ave Suite 350
Apple Valley, MN 55124



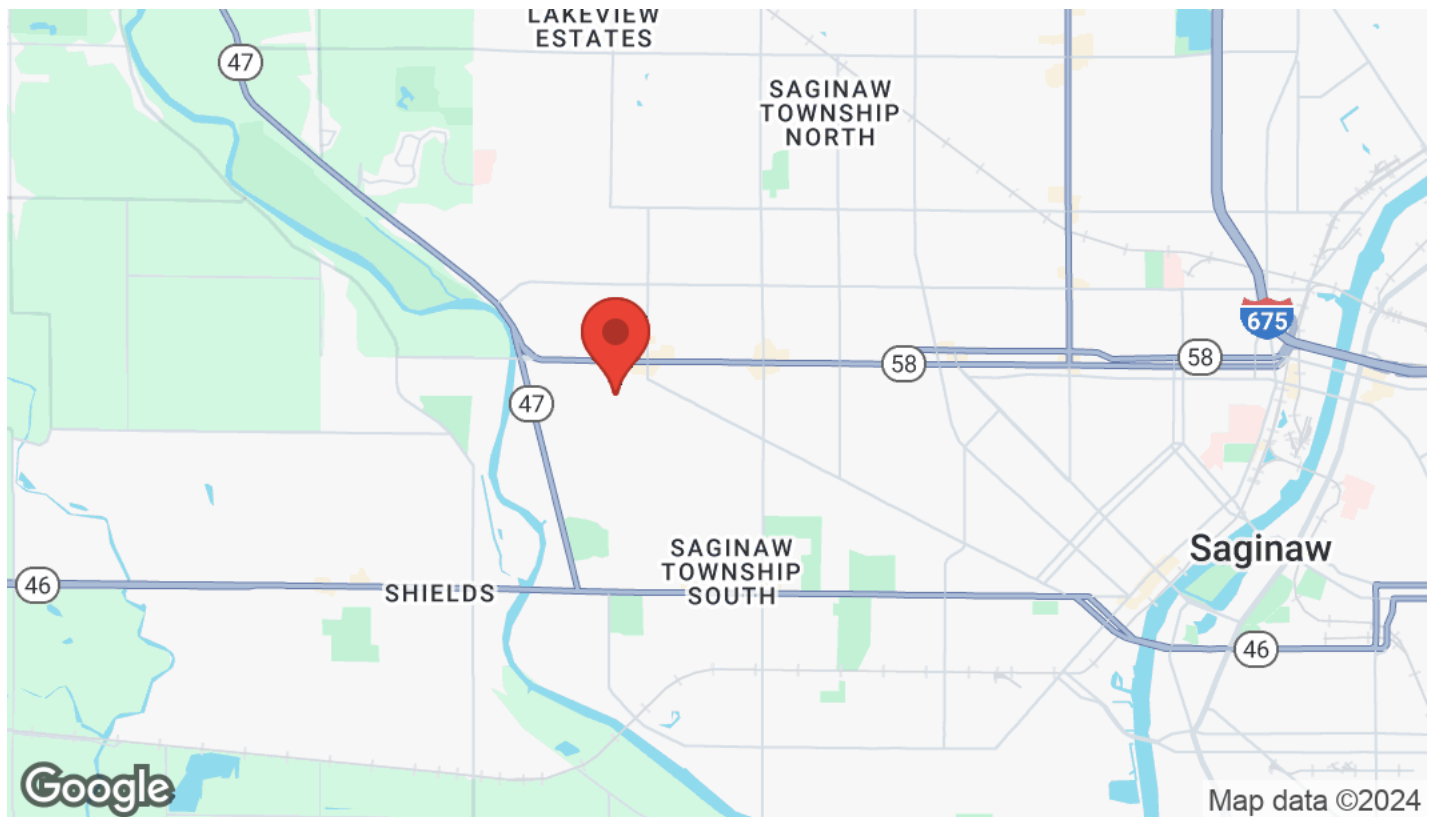
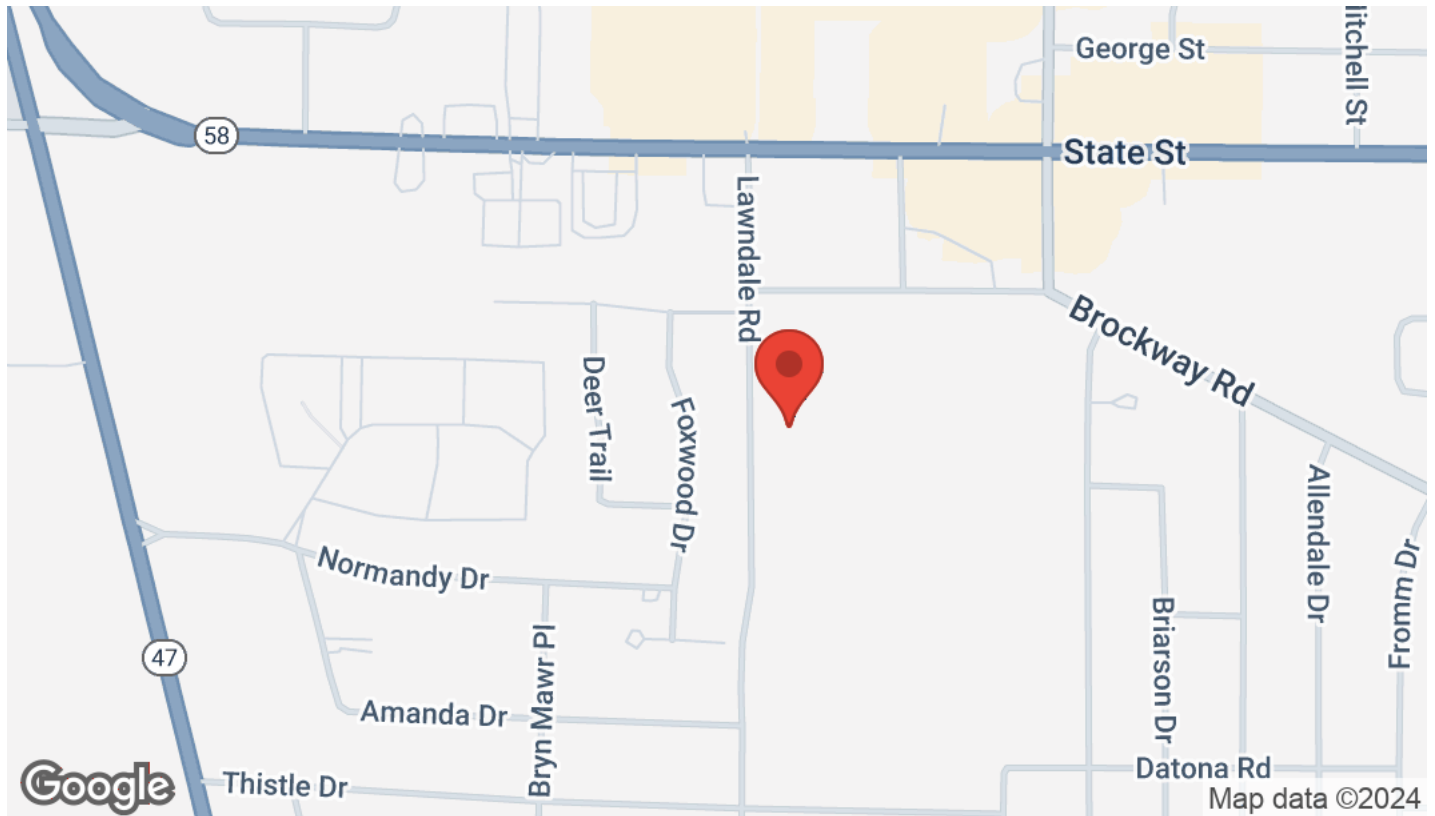
Each Office Independently Owned and Operated

MATTHEW KLEIN, CCIM

Senior Director Investment Services
O: (651) 262-1002
C: (612) 382-3403
matt@amkprop.com
20186454, Minnesota

LOCATION MAPS

5825 BROCKWAY ROAD, SAGINAW, MI 48603



KW COMMERCIAL MIDWEST | AMK
14665 Galaxie Ave Suite 350
Apple Valley, MN 55124

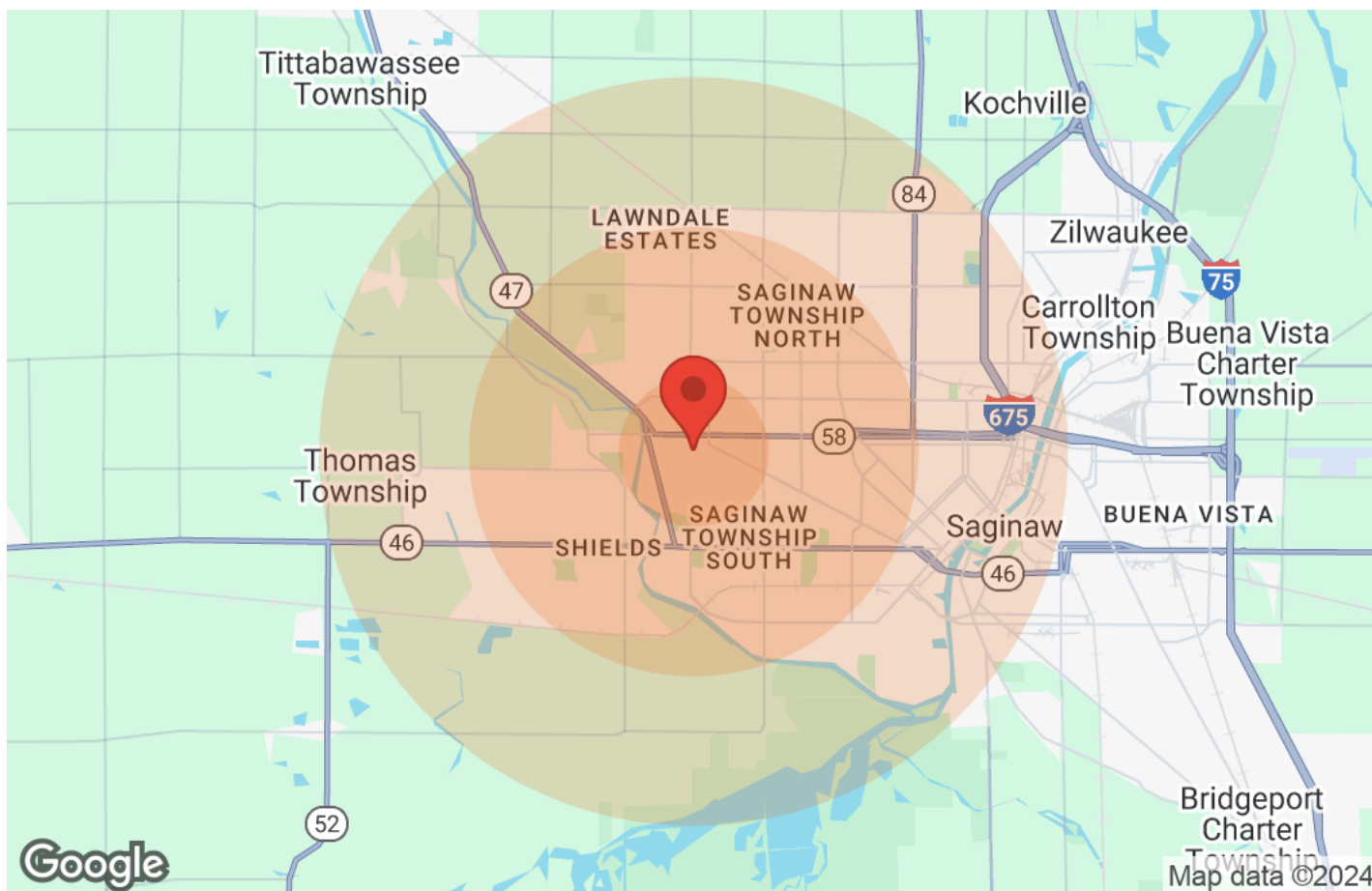


Each Office Independently Owned and Operated

MATTHEW KLEIN, CCIM
Senior Director Investment Services
O: (651) 262-1002
C: (612) 382-3403
matt@amkprop.com
20186454, Minnesota

DEMOGRAPHICS

5825 BROCKWAY ROAD, SAGINAW, MI 48603



Population	1 Mile	3 Miles	5 Miles
Male	2,776	24,627	42,363
Female	3,019	27,161	45,953
Total Population	5,795	51,788	88,316

Age	1 Mile	3 Miles	5 Miles
Ages 0-14	876	8,370	16,277
Ages 15-24	592	6,381	12,012
Ages 25-54	2,528	19,545	34,160
Ages 55-64	768	7,162	11,177
Ages 65+	1,031	10,330	14,690

Income	1 Mile	3 Miles	5 Miles
Median	\$43,019	\$48,085	\$39,900
< \$15,000	268	2,559	6,317
\$15,000-\$24,999	306	2,610	4,729
\$25,000-\$34,999	493	2,422	4,280
\$35,000-\$49,999	560	3,695	5,642
\$50,000-\$74,999	586	4,335	6,556
\$75,000-\$99,999	340	2,990	4,073
\$100,000-\$149,999	227	2,654	3,523
\$150,000-\$199,999	24	739	966
> \$200,000	N/A	521	756

Housing	1 Mile	3 Miles	5 Miles
Total Units	3,108	24,849	42,803
Occupied	2,919	23,251	38,762
Owner Occupied	1,517	16,546	25,710
Renter Occupied	1,402	6,705	13,052
Vacant	189	1,598	4,041

KW COMMERCIAL MIDWEST | AMK
 14665 Galaxie Ave Suite 350
 Apple Valley, MN 55124



Each Office Independently Owned and Operated

MATTHEW KLEIN, CCIM
 Senior Director Investment Services
 O: (651) 262-1002
 C: (612) 382-3403
 matt@amkprop.com
 20186454, Minnesota

DISCLAIMER

5825 BROCKWAY ROAD, SAGINAW, MI 48603



All materials and information received or derived from KW Commercial its directors, officers, agents, advisors, affiliates and/or any third party sources are provided without representation or warranty as to completeness, veracity, or accuracy, condition of the property, compliance or lack of compliance with applicable governmental requirements, developability or suitability, financial performance of the property, projected financial performance of the property for any party's intended use or any and all other matters.

Neither KW Commercial its directors, officers, agents, advisors, or affiliates makes any representation or warranty, express or implied, as to accuracy or completeness of the materials or information provided, derived, or received. Materials and information from any source, whether written or verbal, that may be furnished for review are not a substitute for a party's active conduct of its own due diligence to determine these and other matters of significance to such party. KW Commercial will not investigate or verify any such matters or conduct due diligence for a party unless otherwise agreed in writing.

EACH PARTY SHALL CONDUCT ITS OWN INDEPENDENT INVESTIGATION AND DUE DILIGENCE.

Any party contemplating or under contract or in escrow for a transaction is urged to verify all information and to conduct their own inspections and investigations including through appropriate third-party independent professionals selected by such party. All financial data should be verified by the party including by obtaining and reading applicable documents and reports and consulting appropriate independent professionals. KW Commercial makes no warranties and/or representations regarding the veracity, completeness, or relevance of any financial data or assumptions. KW Commercial does not serve as a financial advisor to any party regarding any proposed transaction.

All data and assumptions regarding financial performance, including that used for financial modeling purposes, may differ from actual data or performance. Any estimates of market rents and/or projected rents that may be provided to a party do not necessarily mean that rents can be established at or increased to that level. Parties must evaluate any applicable contractual and governmental limitations as well as market conditions, vacancy factors and other issues in order to determine rents from or for the property. Legal questions should be discussed by the party with an attorney. Tax questions should be discussed by the party with a certified public accountant or tax attorney. Title questions should be discussed by the party with a title officer or attorney. Questions regarding the condition of the property and whether the property complies with applicable governmental requirements should be discussed by the party with appropriate engineers, architects, contractors, other consultants, and governmental agencies. All properties and services are marketed by KW Commercial in compliance with all applicable fair housing and equal opportunity laws.

KW COMMERCIAL MIDWEST | AMK

14665 Galaxie Ave Suite 350
Apple Valley, MN 55124



Each Office Independently Owned and Operated

PRESENTED BY:

MATTHEW KLEIN, CCIM

Senior Director Investment Services

O: (651) 262-1002

C: (612) 382-3403

matt@amkprop.com

20186454, Minnesota

The calculations and data presented are deemed to be accurate, but not guaranteed. They are intended for the purpose of illustrative projections and analysis. The information provided is not intended to replace or serve as substitute for any legal, accounting, investment, real estate, tax or other professional advice, consultation or service. The user of this software should consult with a professional in the respective legal, accounting, tax or other professional area before making any decisions.