

183 S BLOOMINGDALE RD | BLOOMINGDALE, IL

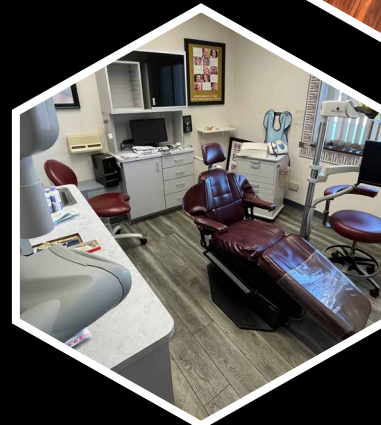
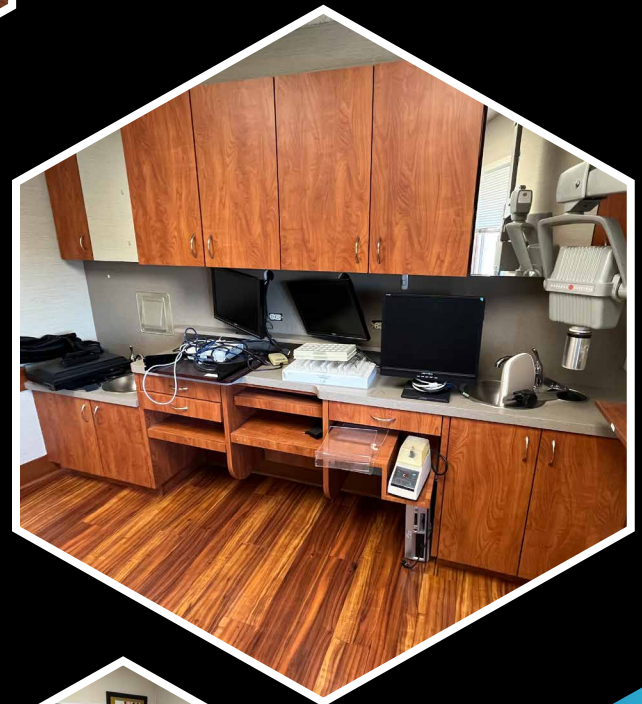
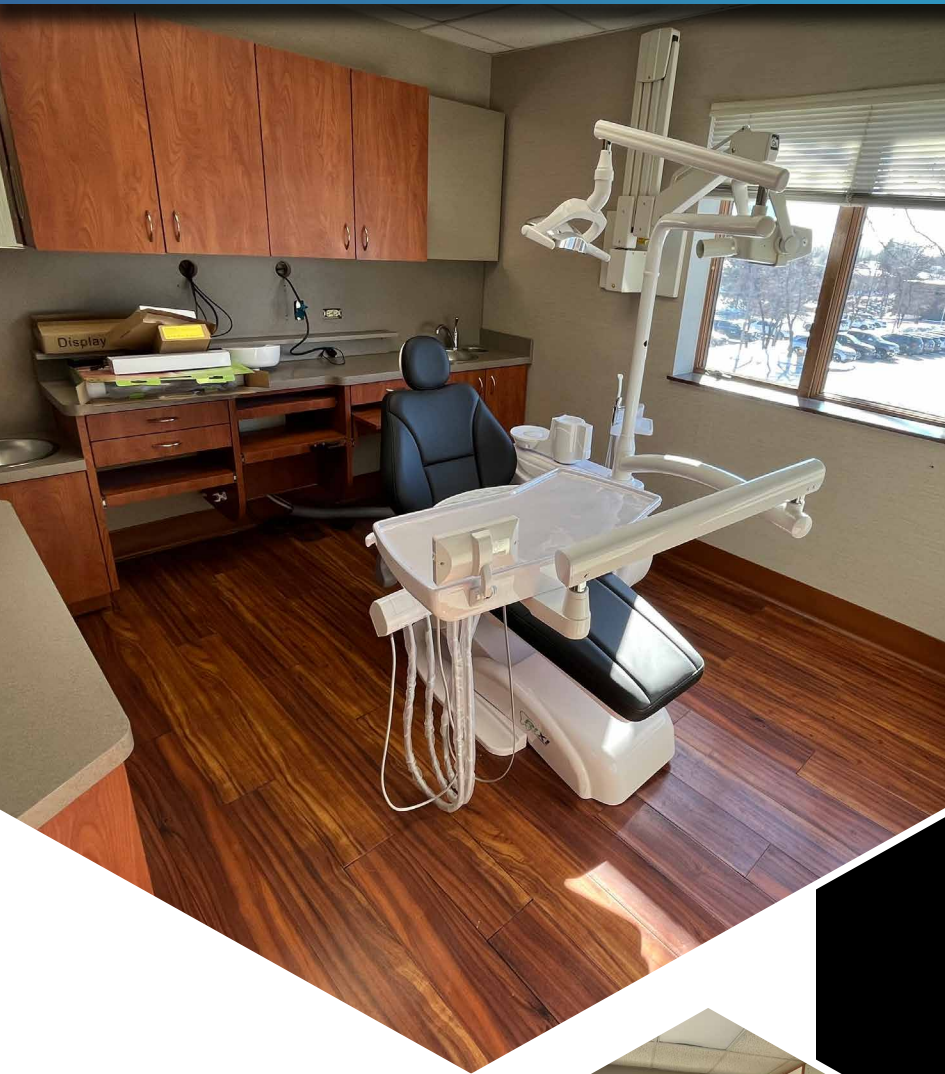
VERSA
REAL ESTATE SERVICES

DENTAL BUILDING WITH EXISTING BUILD-OUT AVAILABLE

MOVE-IN READY DENTAL
SPACE WITH EQUIPMENT

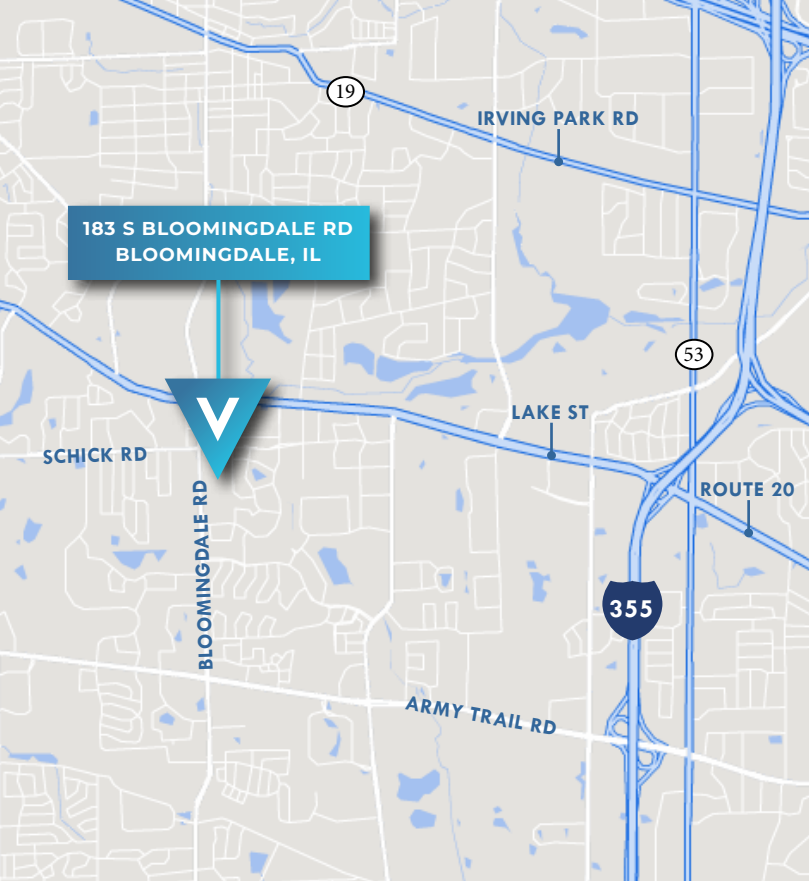
**Jumpstart Your New Business
with Built-in Referral Base**

Over 40 Dental Chairs
in the Building!



BUILDING HIGHLIGHTS

- ▶ Recently renovated common areas
- ▶ Ready to-go medical and dental spaces available
- ▶ Dental spaces outfitted with necessary equipment for practice
- ▶ Building conference room and laundry room on-site
- ▶ High parking ratio (4.5 spaces / 1,000 SF)



AREA AMENITIES

- ▶ Located on Bloomingdale Rd with 25,000 VPD
- ▶ 87,000 people within a 3 mile radius
- ▶ \$111,000 median household income within 1 mile radius
- ▶ Located 1/2 mile South of Lake St.
- ▶ Numerous fast serve and sit down restaurants nearby

PROPERTY SUMMARY

| | |
|--------------------|----------------|
| ASKING LEASE RATE: | \$22.00 PSF MG |
| AVAILABLE SF: | 876 - 4,517 SF |
| YEAR BUILT: | 1981 / 2016 |
| BUILDING SF: | 24,000 SF |
| PARKING RATIO: | 4.5 / 1,000 SF |

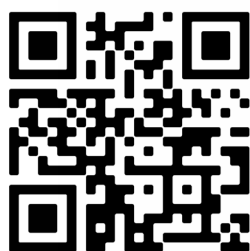
FOR MORE INFORMATION CALL OR TEXT:



JOHN MILLNER, CCIM
Principal
630.480.6342
JMillner@VersaRES.com



RYAN MOEN, SIOR
Principal
630.480.6346
RMoen@VersaRES.com



VERSA
REAL ESTATE SERVICES