

MEDICAL SPACE FOR LEASE



# WARREN MEDICAL CENTER

851 Main Street, Warren, RI 02885

**WHITNEY RUGG**

Sales Associate  
401.751.3200 x3302  
whitney@mgcommercial.com

**LEEDS MITCHELL IV, SIOR**

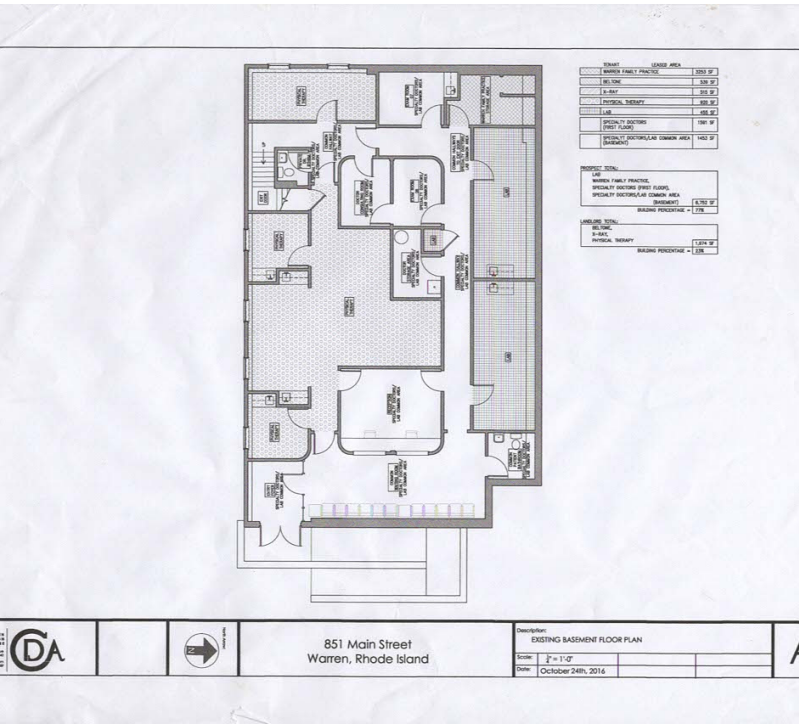
Principal Broker, Partner  
401.751.3200 x3307  
leeds@mgcommercial.com

**MG COMMERCIAL**

365 Eddy Street, Penthouse Suite  
Providence, RI 02903  
401.751.3200 | mgcommercial.com



# PROPERTY SUMMARY



## PROPERTY DESCRIPTION

MG Commercial Real Estate is pleased to offer 3,000 SF of medical office space at 851 Main Street in Warren, RI, for lease. Centrally located in the East Bay, this medical building offers great visibility with ample parking and proximity to public transit. The suite is currently configured for medical, wellness, or consultative patient treatment.

## PROPERTY HIGHLIGHTS

- 8 Private rooms for either treatment, exam, or office
- Reception and waiting room
- Private Entrance
- Ample off-street private parking
- Ensuite restroom
- Convenient to I-195

## LOCATION DESCRIPTION

The Warren Medial Center on Rt. 114 is centrally located between the towns of Barrington and Bristol. The property is less than 5 miles from I-195, providing convenient access for employees and patients traveling from the East Bay, Providence or Fall River. The property's location combines convenience with the amenities that today's professionals demand.

## OFFERING SUMMARY

Lease Rate:	\$18.00 SF (NNN)
Available SF:	3,000 SF

SPACES	LEASE RATE	SPACE SIZE
Suite 1	\$18 per year	3,000 SF

WHITNEY RUGG  
Sales Associate  
401.751.3200 x3302  
whitney@mgcommercial.com

LEEDS MITCHELL IV, SIOR  
Principal Broker, Partner  
401.751.3200 x3307  
leeds@mgcommercial.com

365 Eddy Street, Penthouse Suite  
Providence, RI 02903  
mgcommercial.com

