



**MACKINTOSH, Inc.**  
COMMERCIAL BROKERAGE

**For Lease**  
**Class A Office / Retail Center**  
**2,351 SF - @ \$16 SF + NNN (\$8.30 SF)**

**Main Street Plaza**  
**1311 MAIN ST., MOUNT AIRY, MD 21771**



Main Street Plaza is nestled at the center of Mt. Airy with 44,000 square feet of Commercial Retail & Office Space. Two Elevators servicing the building. Restrooms in the common areas on each floor. Plenty of Parking Surrounds the Building.

Current Tenants Include:

Restaurants California Tortilla and Katana Sushi, Peepers Family Eye Care Center, Tropic Tanning & Nail, Carroll Counseling, Dr. Niraj Patel – Damascus Dental, Studio Allure Hair Design, Absolute Turnover Services, Financial Solutions Group, Mt. Airy Physical Therapy, SNAP Fitness, and Frederick Pediatrics.

Available Suites:

**[Suite 302B – Penthouse – 2,351 SF - \(Click for Brochure\)](#)**

Three Large Offices Plus Entrance Receptionist / Break Room  
on Top Floor with Elevator

**[\(Click Here For Video\)](#)**

FOR ADDITIONAL INFORMATION CONTACT:

**Nancy Green - Call: 301-748-3321**

Email: [Nancy@ngreen.com](mailto:Nancy@ngreen.com)

Website: <http://www.ngreen.com>

Mackintosh Commercial Brokerage

262 W. Patrick Street

Frederick, Maryland 21701

Broker: 1-800-727-SOLD

Fax #: 1240-489-7932

All information deemed reliable, but not guaranteed

## Suite 302B = The Suite is 2,351 SF.

The Suite contains an Entrance Room that can be a Conference Room / Break Room, and Three Extra Large Offices.



Exit Door from Suite  
To Common Hallway



Interior Break Room /  
Conference Room



Large Open Office 1



Large Open Office 1  
view to South



Large Open Office 2



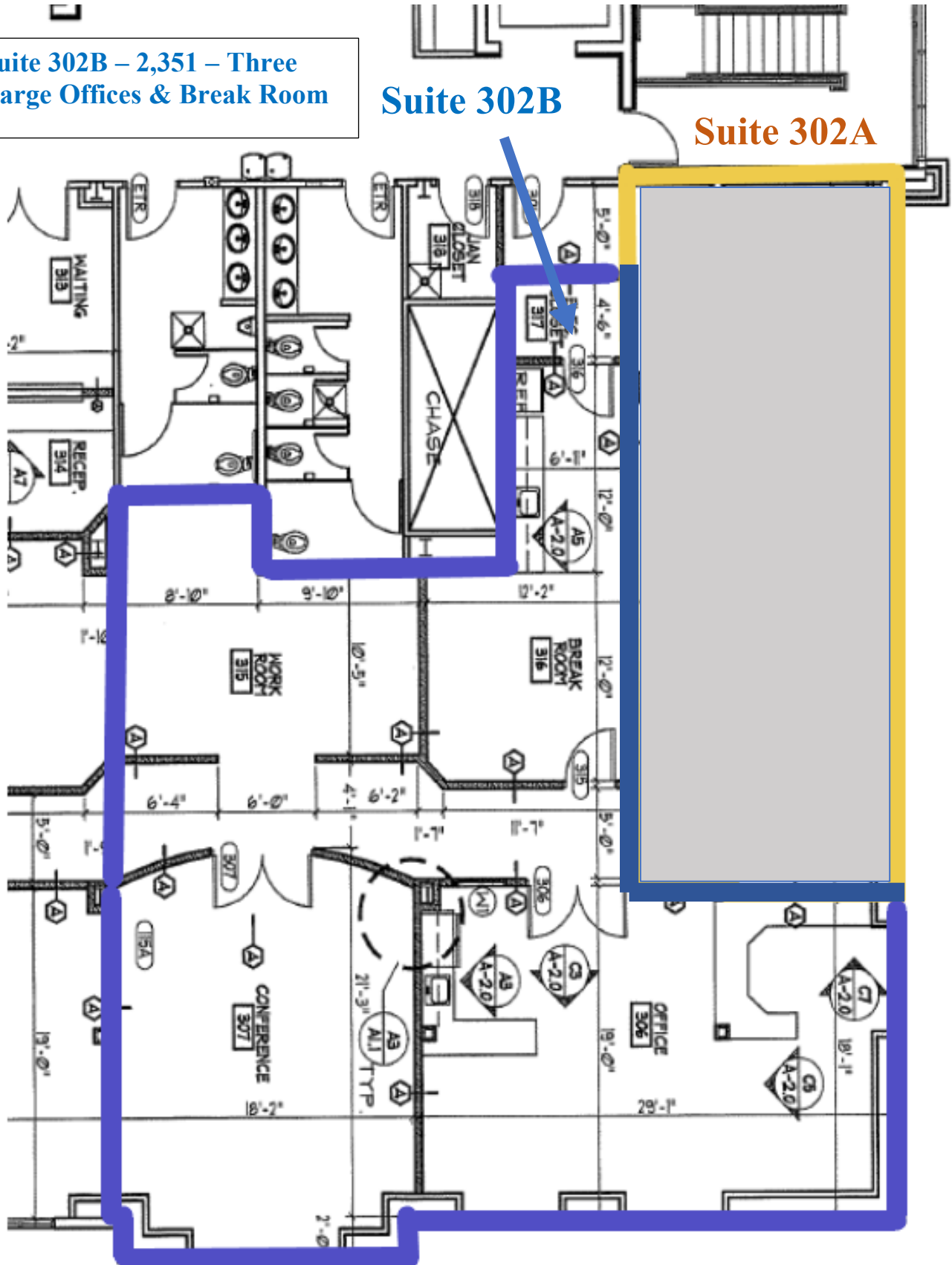
Large Office 3

All information deemed reliable, but not guaranteed



## Main Street Plaza – Suite 302B:

Suite 302B – 2,351 – Three Large Offices & Break Room

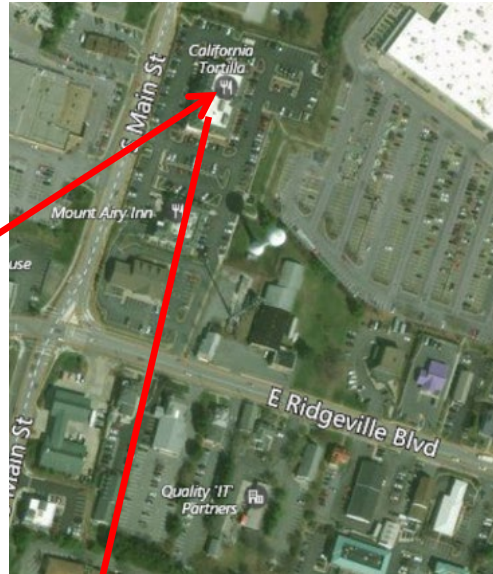


## Main Street Plaza Directions:

From Interstate 70 to Mt Airy Exit 68, continue North to Main Street. Turn Left onto East Ridgeville Blvd, then Right on Main Street. Property located one block north of intersection of East Ridgeville Blvd and Main Street. Brick building located on right side of the Street.



**Subject  
Property**



All information deemed reliable, but not guaranteed

FOR ADDITIONAL INFORMATION CONTACT:

**Nancy Green - Call: 301-748-3321**

Email: [Nancy@Ngreen.com](mailto:Nancy@Ngreen.com)

website : <https://www.ngreen.com>

**Mackintosh Commercial Brokerage**

262 W. Patrick Street

Frederick, Maryland 21701

Broker: 1-800-727-SOLD

Fax #: 1240-489-7932