



# **Professional Office Space for Lease Dunwoody**

**678 to 4,243 rsf Available**

**4675 N. SHALLOWFORD ROAD, DUNWOODY, GA 30338**



- ◆ *Build to Suite Space*
- ◆ *High Exposure Location*
- ◆ *Plenty of Drive Up Parking*
- ◆ *Close to 285/400/85*



*Building Renovation plan rendering by boggs vickers ARCHITECTURE subject to change*

**Call to Discuss:  
Rates, Term & Timeline**

**Call Today**



**Rick Ferguson**  
ATL-Commercial Real Estate  
678-209-3100 tele/text

RickFerguson@CRE-ATL-CRE.com

# Building Finishes

(Below recent suite buildout for Stout Kaiser LLC)

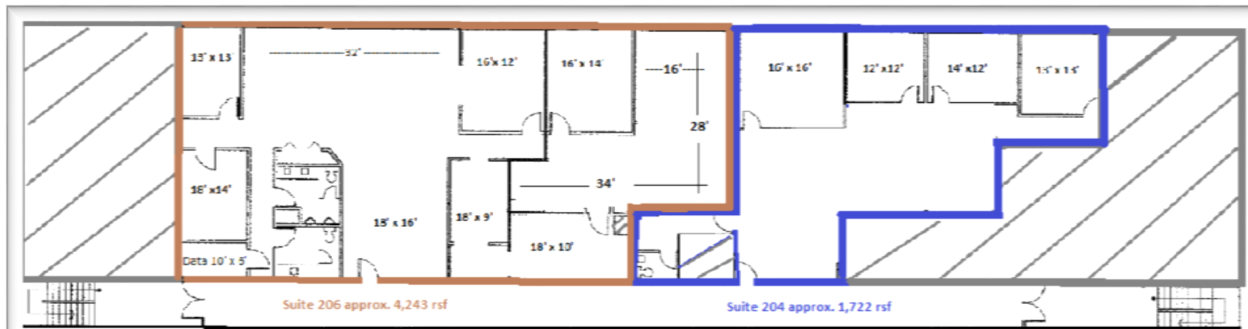


4675 N. SHALLOWFORD ROAD, DUNWOODY, GA 30338

# Build-to-Suit Shell Space

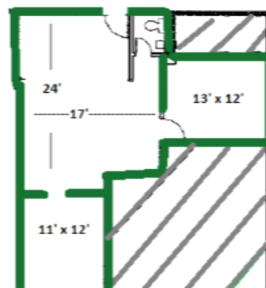


## Available Suites 204-206-209

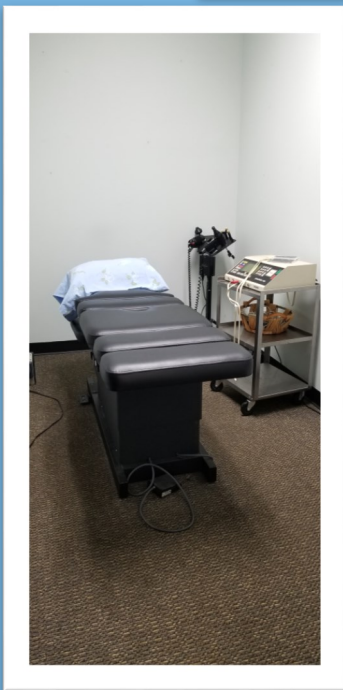
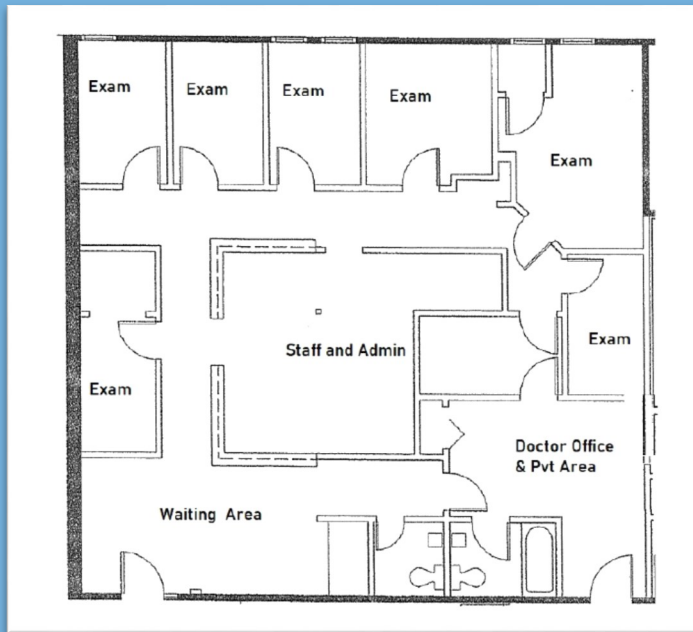


Floor Plan and measurements are not warranted as exact and are for illustration only

Suite 209 approx. 678 rsf

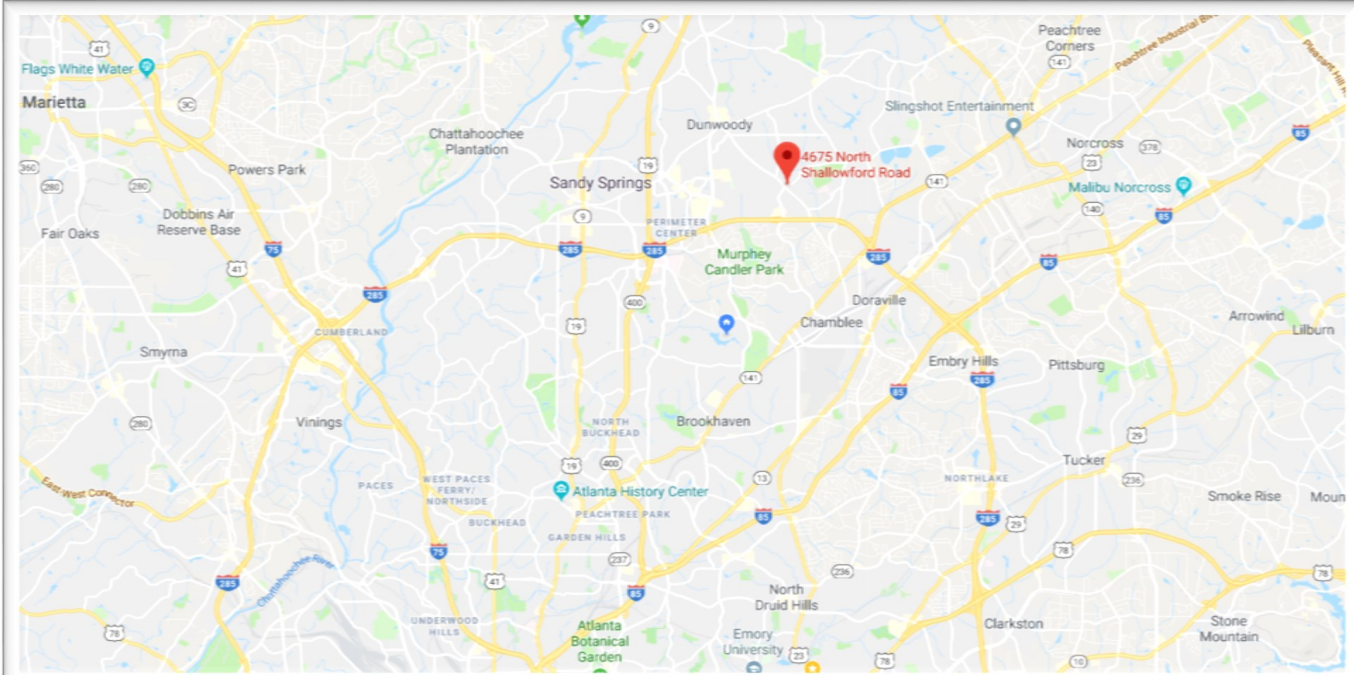


# Suite 100



*Signage available*

# Location



## Pernoshal Park

Located at 4675 North Shallowford Road, at 5-acres, Pernoshal Park includes a pavilion, bathrooms, basketball courts, a pickleball court, large open field area for play, and a connection to part of the Dunwoody Trailway.

**4675 N. SHALLOWFORD ROAD, DUNWOODY, GA 30338**