



**Hard to Find – For Lease Small Downtown Retail, Office or Medical space**  
139 Post Road East (US-1), Westport, Connecticut – Fairfield County

HK



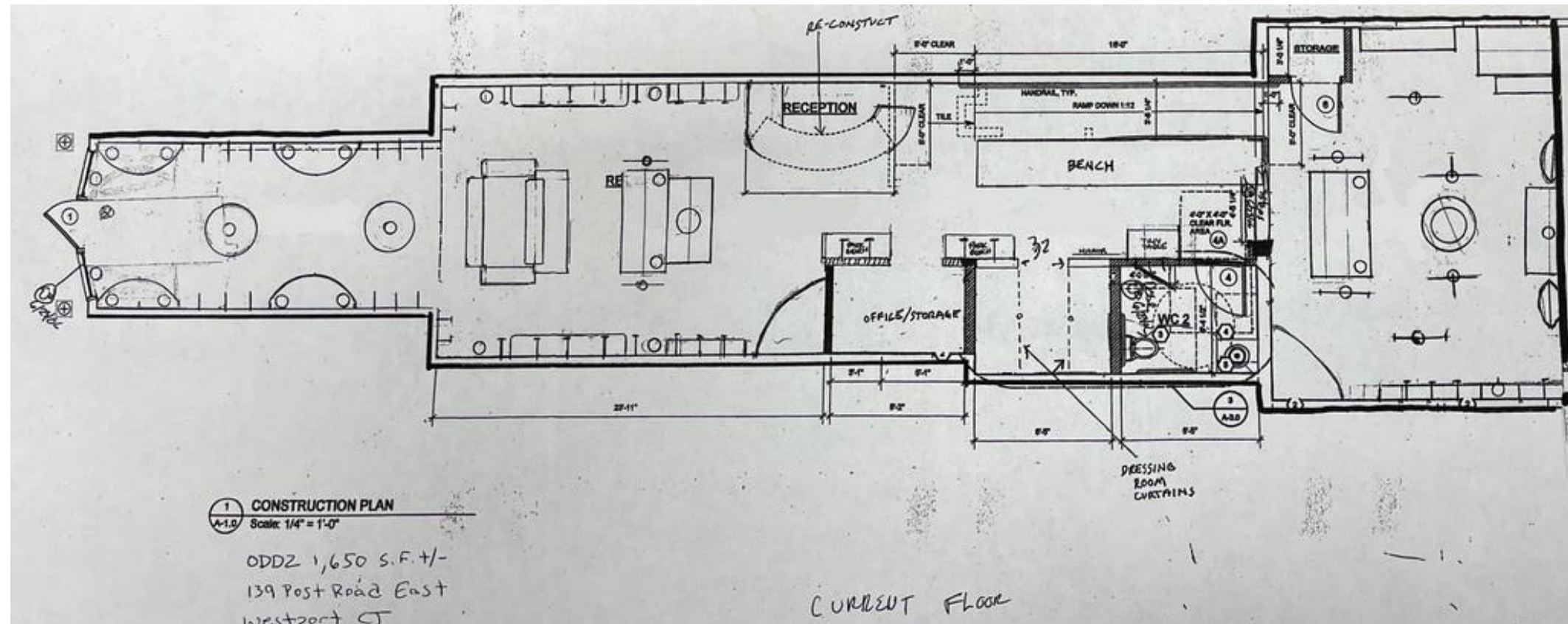
## About the Space

Location:	Immediate neighbors include Design Within Reach, Urban Outfitters, Tiffany's, Barnes and Noble, Anthropologie, Starbucks, AT&T, Specs , Paper Source and other national and local retailers.
Building Size:	6,000 +/- SF
Space Size:	1,650 +/- SF – Possibility to divide down to 1,300 SF – per SF rate will be established depending on work required.
Asking Rent:	\$40 per SF Triple Net for existing 1,650 SF configuration
Triple Net Charges:	Estimated at \$10.80 +/- SF
Zoning:	BCD – Business Center District
Westport Average HH Income:	\$361,389
Availability:	Immediate
Co-tenants:	Il Pastaficio, Aesthe Medispa

All information in subject to errors and omissions

The logo consists of the letters 'H' and 'K' in a blue, serif font, positioned inside a white square. The square is set against a dark blue background that spans the bottom of the page.

## Post Road

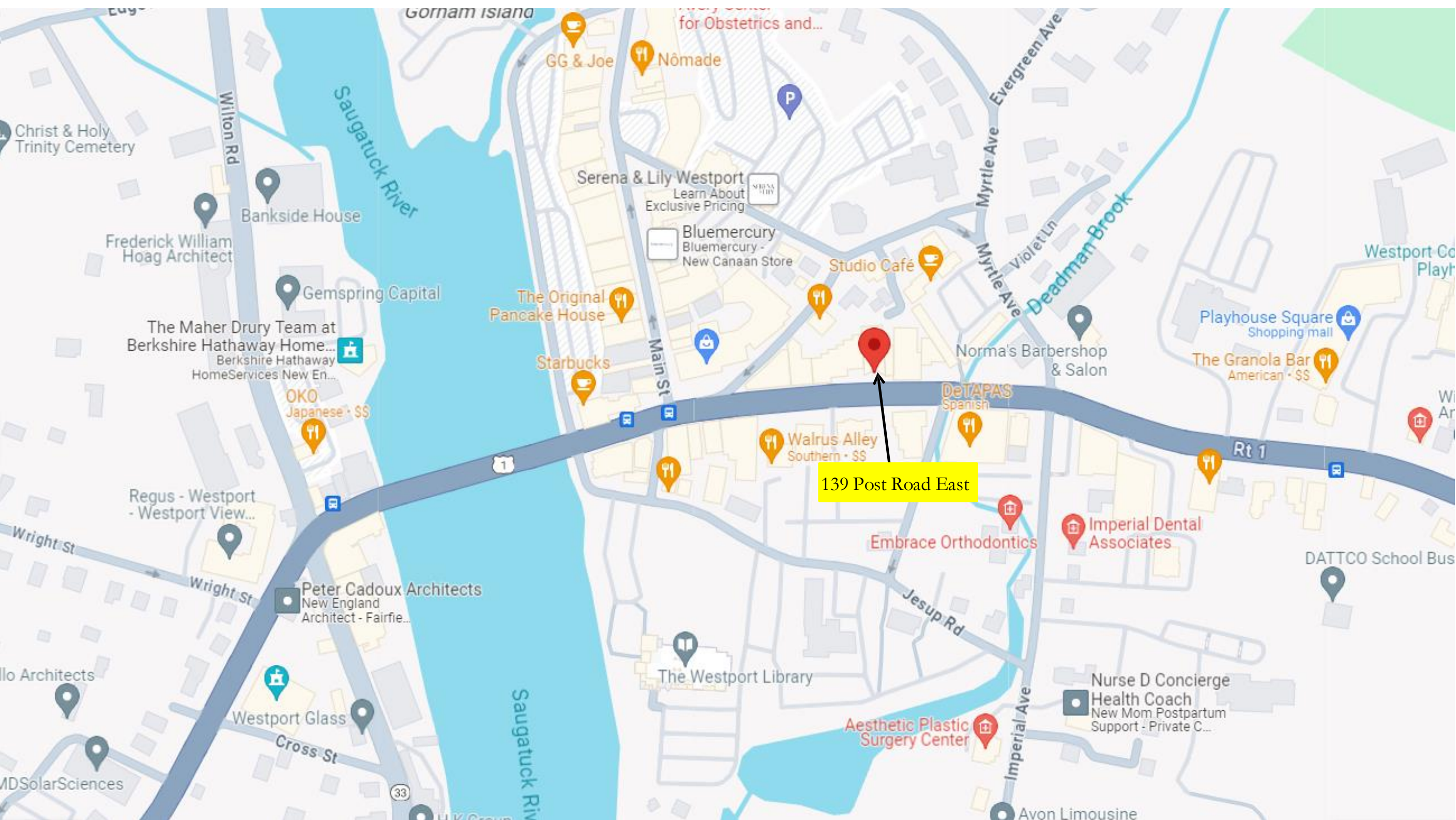


## Space Layout

All information in subject to errors and omissions







For additional information, please contact:

Franco Fellah  
Executive Vice President

HK Group II, Inc.  
49 Riverside Avenue  
Westport, CT 06880

C: 203.981.3476

The logo consists of the letters 'H' and 'K' in a blue, serif font, positioned inside a white square with a thin grey border. The 'H' and 'K' are stylized and closely spaced.

HK