

LEASE

DOWNTOWN BERKELEY

±1686 SF 2 BLOCKS FROM BART

5 PRIVATE OFFICES + OPEN AREA



2041 BANCROFT WAY SUITE 201
BERKELEY CALIFORNIA

\$3.50 PSF
FULL SERVICE



Located in pleasant section of Downtown Berkeley. Building was seismically retrofitted, ADA, restrooms, elevator, and stairway. Convenient to [public transportation](#), [retail stores](#) and [eateries](#). Nice redbrick walls and lots of natural light.

Features:

- 5-6 offices
- Open area
- Functional windows

[INTERIOR PHOTOS](#)

[FLOOR PLAN](#)



Matt Gondak

510-450-1434

mgondak@mrecommercial.com

CA DRE No: 00832220

Jim Hoang

510-350-7346

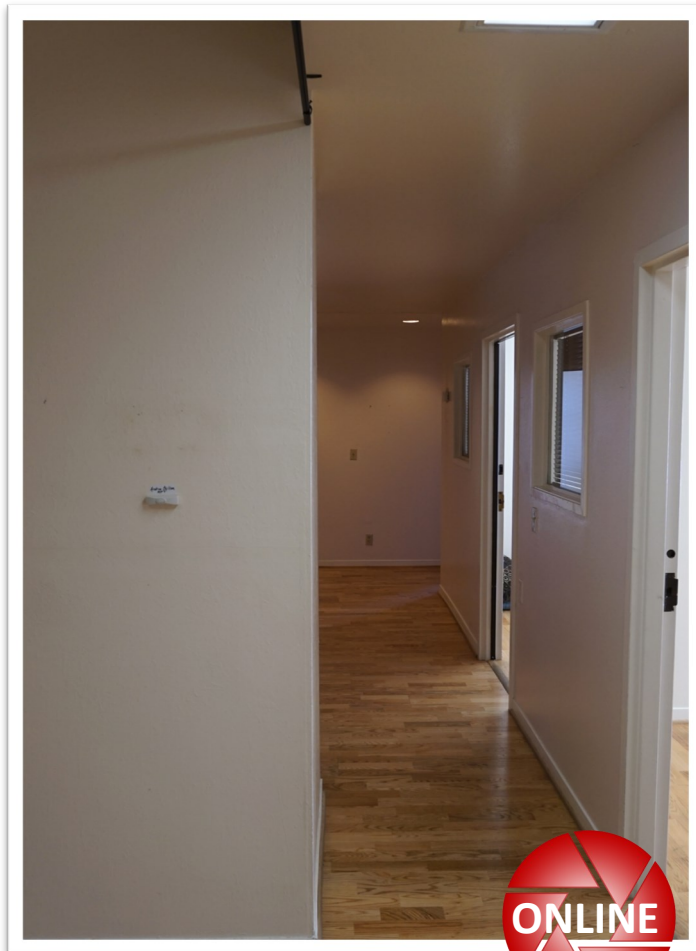
jhoang@mrecommercial.com

CA DRE No: 01957399



All information herein is offered in good faith and deemed accurate, but not guaranteed.

SUITE 201 & 202



2041 Bancroft Way, Ste 301
Berkeley, CA

Approximately 1686 SF

