



Sublease at Tampa Bay Park

Lakeside
3407 W. Martin Luther King Blvd.
Tampa, FL 33607

For sublease

- Suite 150
- Up to 16,209 SF
- Lease expires 01/31/2028
- Furniture available
- Fully built-out with conference rooms, collaboration rooms, executive offices, reception, break room, server room and storage
- 57 workstations
- Building amenities include cafe and property management on-site
- 4.00/1,000 SF parking ratio

Gary Godsey

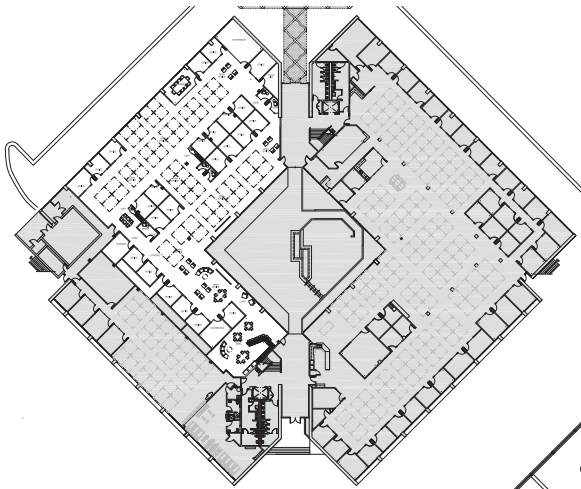
Managing Director
+1 813 387 1306
Gary.Godsey@jll.com

Caleb Lewis

Managing Director
+1 813 387 1289
Caleb.Lewis@jll.com

For Sublease Lakeside - Suite 150

3407 W. Martin Luther King Blvd., Tampa, FL 33607



Gary Godsey
Managing Director
Gary.Godsey@jll.com
+1 813 387 1306

Caleb Lewis
Managing Director
Caleb.Lewis@jll.com
+1 813 387 1289

DISCLAIMER

Jones Lang LaSalle Brokerage, Inc., a licensed real estate broker

Although information has been obtained from sources deemed reliable, JLL does not make any guarantees, warranties or representations, express or implied, as to the completeness or accuracy as to the information contained herein. Any projections, opinions, assumptions or estimates used are for example only. There may be differences between projected and actual results, and those differences may be material. JLL does not accept any liability for any loss or damage suffered by any party resulting from reliance on this information. If the recipient of this information has signed a confidentiality agreement with JLL regarding this matter, this information is subject to the terms of that agreement. Images courtesy of CoStar. ©2024, Jones Lang LaSalle Brokerage, Inc. All rights reserved.

For Sublease Lakeside - Suite 150
3407 W. Martin Luther King Blvd., Tampa, FL 33607

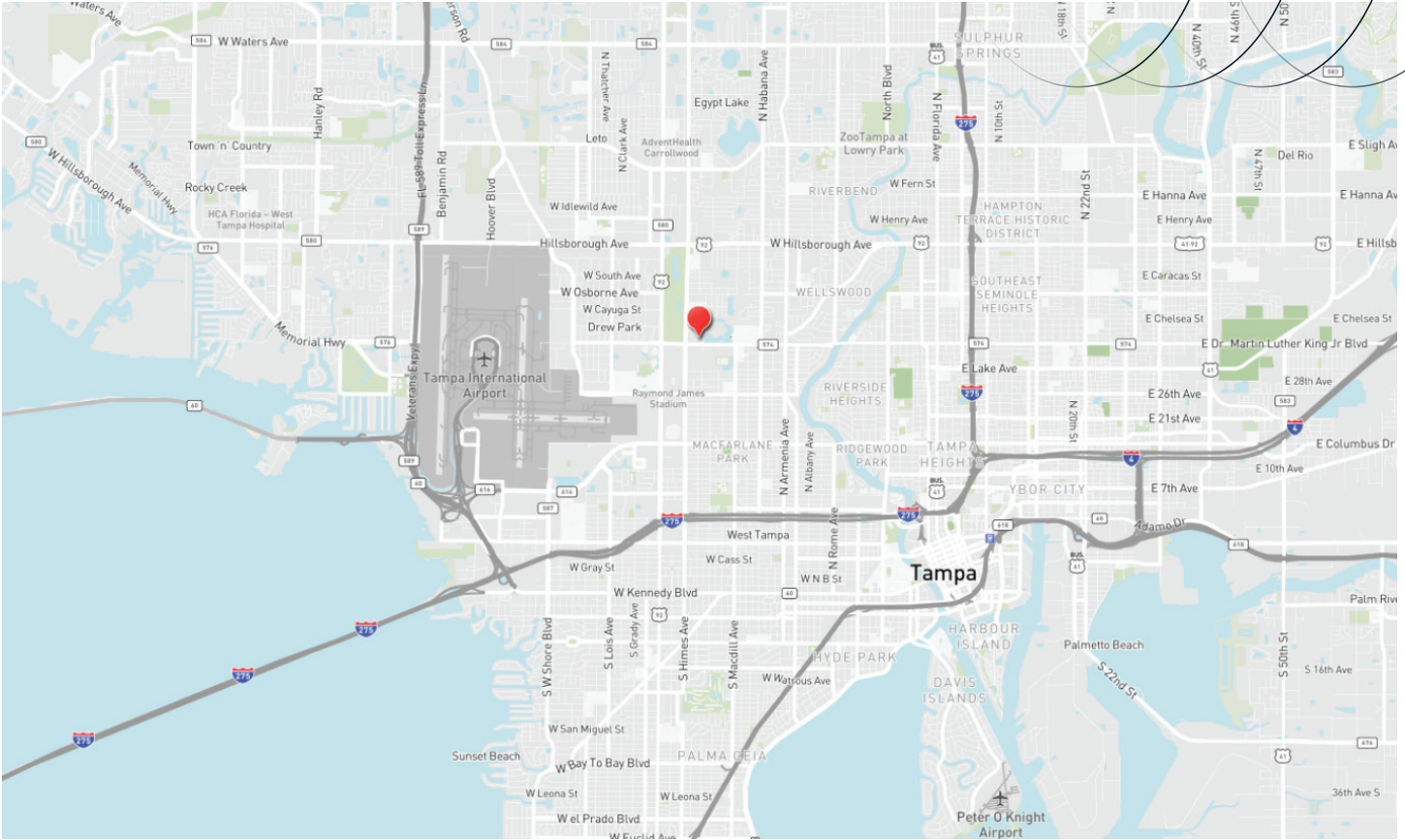


For Sublease Lakeside - Suite 150
3407 W. Martin Luther King Blvd., Tampa, FL 33607



For Sublease Lakeside - Suite 150

3407 W. Martin Luther King Blvd., Tampa, FL 33607



For sublease

- Suite 150
- Up to 16,209 SF
- Lease expires 01/31/2028
- Furniture available, 57 workstations
- 4.00/1,000 SF parking ratio

Gary Godsey

Managing Director
+1 813 387 1306
Gary.Godsey@jll.com

Caleb Lewis

Managing Director
+1 813 387 1289
Caleb.Lewis@jll.com

DISCLAIMER

Jones Lang LaSalle Brokerage, Inc., a licensed real estate broker

Although information has been obtained from sources deemed reliable, JLL does not make any guarantees, warranties or representations, express or implied, as to the completeness or accuracy as to the information contained herein. Any projections, opinions, assumptions or estimates used are for example only. There may be differences between projected and actual results, and those differences may be material. JLL does not accept any liability for any loss or damage suffered by any party resulting from reliance on this information. If the recipient of this information has signed a confidentiality agreement with JLL regarding this matter, this information is subject to the terms of that agreement. Images courtesy of CoStar. ©2024. Jones Lang LaSalle Brokerage, Inc. All rights reserved.